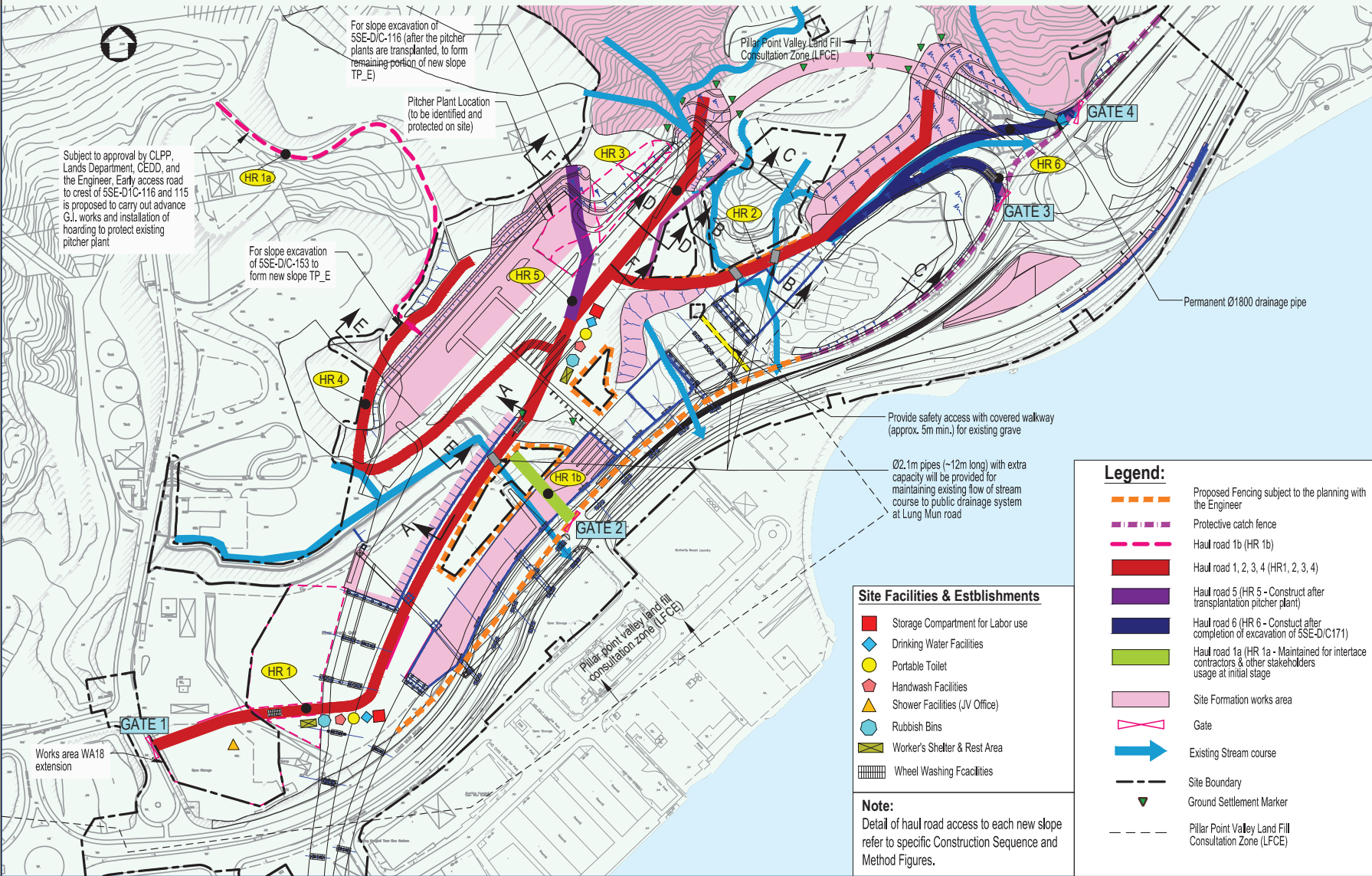


Site Access for Plant & Material Delivery to Work Front and Storage



Subject to approval by CLPP, Lands Department, CEDD, and the Engineer, Early access road to crest of SSE-D1C-116 and 115 is proposed to carry out advance G.I. works and installation of hoarding to protect existing pitcher plant

For slope excavation of SSE-D/C-153 to form new slope TP_E

Pitcher Plant Location (to be identified and protected on site)

Pillar Point Valley Land Fill Consultation Zone (LFCE)

Provide safety access with covered walkway (approx. 5m min.) for existing grave

Ø2.1m pipes (~12m long) with extra capacity will be provided for maintaining existing flow of stream course to public drainage system at Lung Mun road

Site Facilities & Establishments

- Storage Compartment for Labor use
- ◆ Drinking Water Facilities
- Portable Toilet
- ▲ Handwash Facilities
- ▲ Shower Facilities (JV Office)
- Rubbish Bins
- Worker's Shelter & Rest Area
- Wheel Washing Facilities

Note:
Detail of haul road access to each new slope refer to specific Construction Sequence and Method Figures.

Legend:

- — — Proposed Fencing subject to the planning with the Engineer
- — — Protective catch fence
- — — Haul road 1b (HR 1b)
- — — Haul road 1, 2, 3, 4 (HR1, 2, 3, 4)
- — — Haul road 5 (HR 5 - Construct after transplantation pitcher plant)
- — — Haul road 6 (HR 6 - Construct after completion of excavation of SSE-D/C171)
- — — Haul road 1a (HR 1a - Maintained for interstage contractors & other stakeholders usage at initial stage)
- ⊗ Gate
- Existing Stream course
- - - Site Boundary
- ▲ Ground Settlement Marker
- - - Pillar Point Valley Land Fill Consultation Zone (LFCE)

Rev	Amendment	By	Chk.	App.	Date

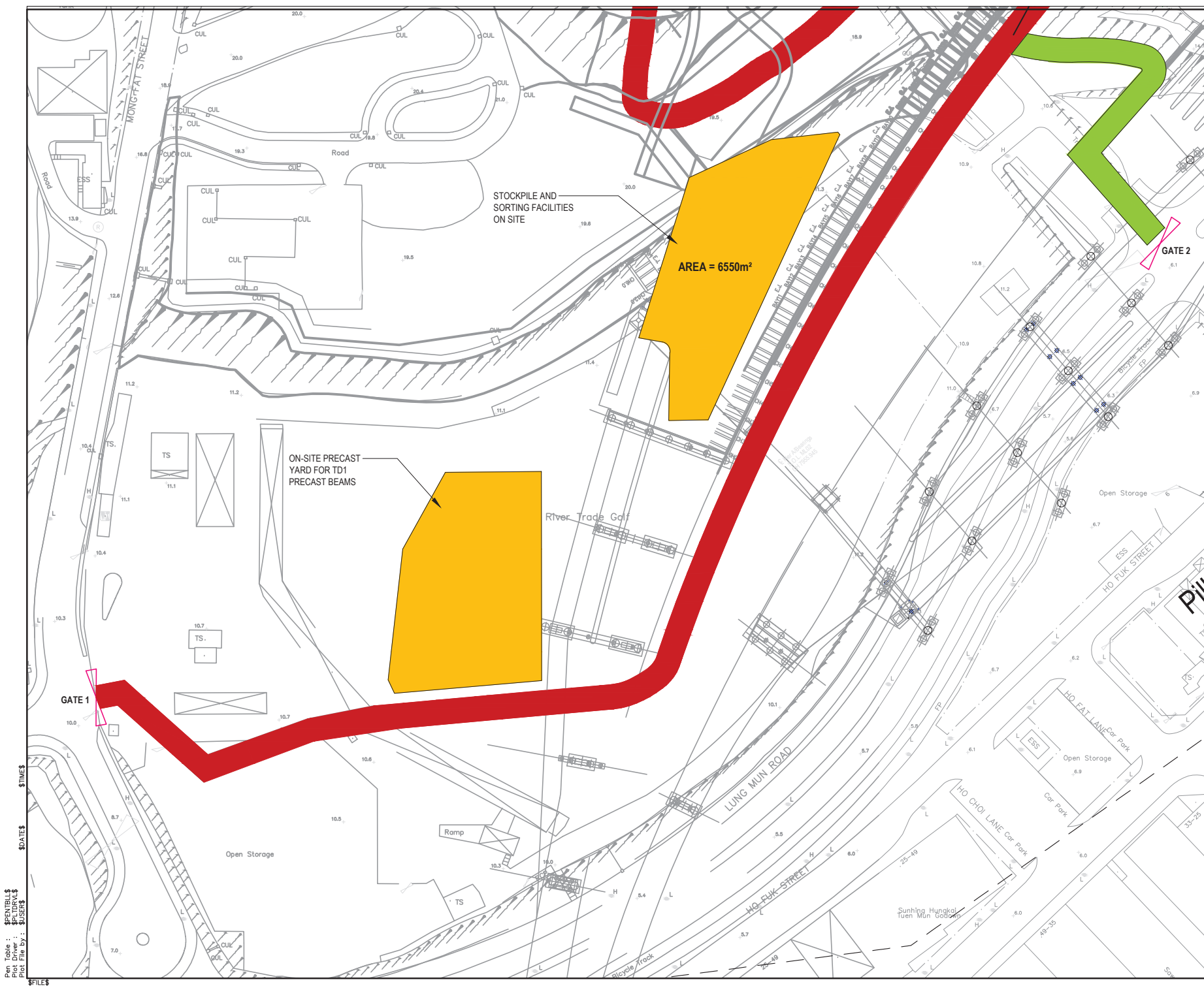
Client: **HIGHWAYS DEPARTMENT**
 香港路政工程署
 Hong Kong - Traffic & Mass Transit
 Hong Kong Project Management Office

Contractor: **CRBC Kaden**
 CRBC-KADEN Joint Venture
 中國路客 基利

Detailed Design By: **MEINHARDT**
 Meinhardt Infrastructure and Environment Limited
 奧華建築環境工程顧問有限公司

Project: **CONTRACT HY/2013/12**
TUEN MUN - CHEK LAP KOK LINK
NORTHERN CONNECTION
TOLL PLAZA AND ASSOCIATED WORKS

Pen Table : \$PENITBLL\$
 Plot Driver : \$PLTDRLVL\$
 Plot File by : \$USER\$
 \$TIMES\$
 \$DATE\$
 \$FILE\$



Pen Table : \$PENITBLL\$
 Plot Driver : \$PLOTDRVLL\$
 Plot File by : \$PLOTFILES\$
 \$FILES\$

Rev	Amendment	By	CHK	App.	Date

Client

Contractor

CRBC-KADEN Joint Venture
 中環建設及和興建築

Detailed Design By

Project

**CONTRACT HY/2013/12
 TUEN MUN - CHEK LAP KOK LINK
 NORTHERN CONNECTION
 TOLL PLAZA AND ASSOCIATED WORKS**

Title

**STOCKPILE AND
 STORAGE AREA**

Status

DETAILED DESIGN

Drawn	WYT	Checked	CC	Approved	SM

Scale 1:750
 First issued
 Drawing No. AD Figure 2.6
 Rev.

Copyright Reserved