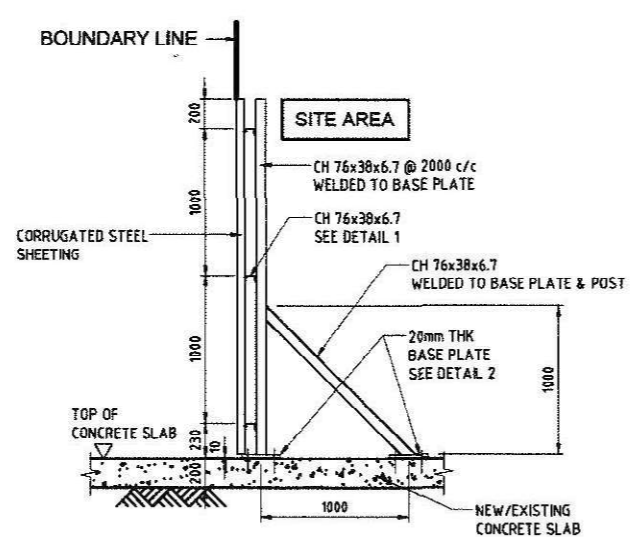
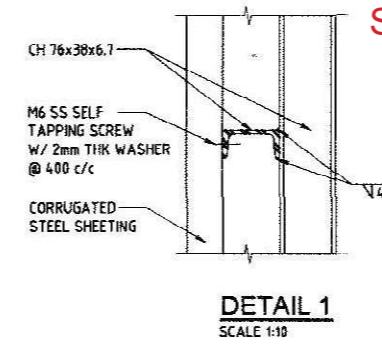


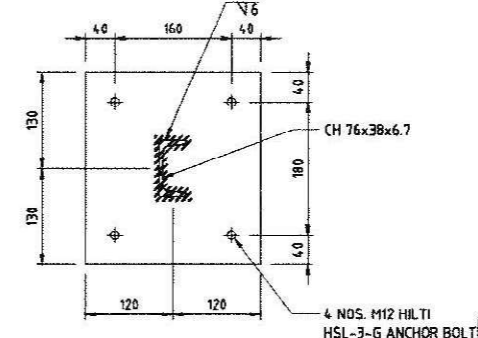
TYPICAL DETAIL OF CONCRETE COUNTERWEIGHT FOR COVERED WALKWAY
SCALE 1:25



SECTION C-C PROPOSED SINGLE BOARD HOARDING (2440mm HIGH)
SCALE 1:50



DETAIL 1
SCALE 1:10



DETAIL 2
SCALE 1:10

Screening of Construction Works by Hoardings Around Works (CM5)
Contract 2 - HY/2012/08

- DESIGN ASSUMPTIONS:**
- A) ALL STRUCTURAL STEELWORK SHALL BE GRADE 250 AND DESIGN COMPLIES WITH STRUCTURAL USE OF STEEL IN HONG KONG, 1987.
 - B) ALL CONNECTIONS BETWEEN STEEL MEMBERS SHALL BE 6mm FILLET WELD LEG LENGTH ALL AROUND.
 - C) WIND LOAD IS BASED ON 0.67kPa, i.e. 37% OF THE DESIGN WIND PRESSURE OF 1.82kPa.
 - D) SAFE BEARING PRESSURE OF SOIL UNDERNEATH PAVEMENT IS 100kPa (OR 125kPa WITH WIND CONDITION)
 - E) NO OVERHANG OF THE CATCH PLATFORM ON THE SIDE OF THE CARRIAGEWAY.

Rev	Description	Date	Checked
F	ICE COMMENTS ADDED	29NOV13	pkv
E	DESIGN ASSUMPTIONS & BEAM HT ADDED	29NOV13	pkv
D	DETAILS REVISED TO BD STANDARD	29NOV13	BSh
C	SECTIONS A-A, B-B & D-D REVISED	04NOV13	pkv
B	REVISED HOARDING (SECTION C-C)	31OCT13	BSh/pkv
A	FIRST ISSUE	19OCT13	pkv

Designed By: pkv
 Drawn By: DAJ/Gan
 Approved By: SPo
 Date: 19OCT2013

DRAGONAGE
 A member of the Hongkong Construction Group
 Dragonage - Bouygues Joint Venture 龍建 - 保力

Client: **HIGHWAYS DEPARTMENT**

Contractor's Designer: **ARUP** Ove Arup & Partners Hong Kong Limited

Project: Contract No. HY/2012/08
 Tuen Mun - Chek Lap Kok Link - Northern Connection Sub-Sea Tunnel Section

Drawing Title: **GENERAL-PORION 6 DEMOLITION WORKS SITE LAYOUT OF PROPOSED HOARDING AND DEMOLITION WORKS (SHEET 2 OF 2)**

Figure 8.6ii