



- NOTES:**
- COORDINATES ARE RELATED TO HONG KONG METRIC GRID (1980).
  - DIMENSIONS ARE IN MILLIMETER AND CHAINAGE ARE IN METRES UNLESS OTHERWISE SHOWN.

- LEGEND:**
- SITE BOUNDARY
  - WORKS AREA

THE SITE SEE DRAWING NO. 60191048/C9/000/C00/1001

THE SITE SEE DRAWING NO. 60191048/C9/000/C00/1002

WORKS AREA 'WA3' SEE DRAWING NO. 60191048/C9/000/C00/1051

TUEN MUN-CHEK LAP KOK LINK (TM-CKL) (BY OTHERS)

RECLAMATION FOR THE TM-CKL SOUTHERN LANDFALL (BY OTHERS)

OTHER INFRASTRUCTURE AND BUILDING WORKS OUTSIDE SITH BOUNDARY (BY OTHERS)

HONG KONG LINK ROAD (HKLR) (SEPARATE PROJECT) (BY OTHERS)

- TENDER DRAWING		TTHK	BCC	JUL 19
REV. 修改	DESCRIPTION 内容摘要	CHK. 查核	DATE 日期	

**HIGHWAYS DEPARTMENT**  
 路政署  
 Major Works Project Management Office (Special Duties)  
 主要工程管理处(專責事務)

HONG KONG-ZHUHAI-MACAO BRIDGE  
 HONG KONG BOUNDARY CROSSING FACILITIES  
 - PHASE 2 AND OTHER WORKS

**SITE LOCATION PLAN**

**AECOM** + +  
 Rogers Stirk Harbour + Partners  
 BURO HAPPOLD ATKINS ADI + +  
**Aedas**

DRG.NO. 60191048/C9/000/C00/1000  
 圖紙編號

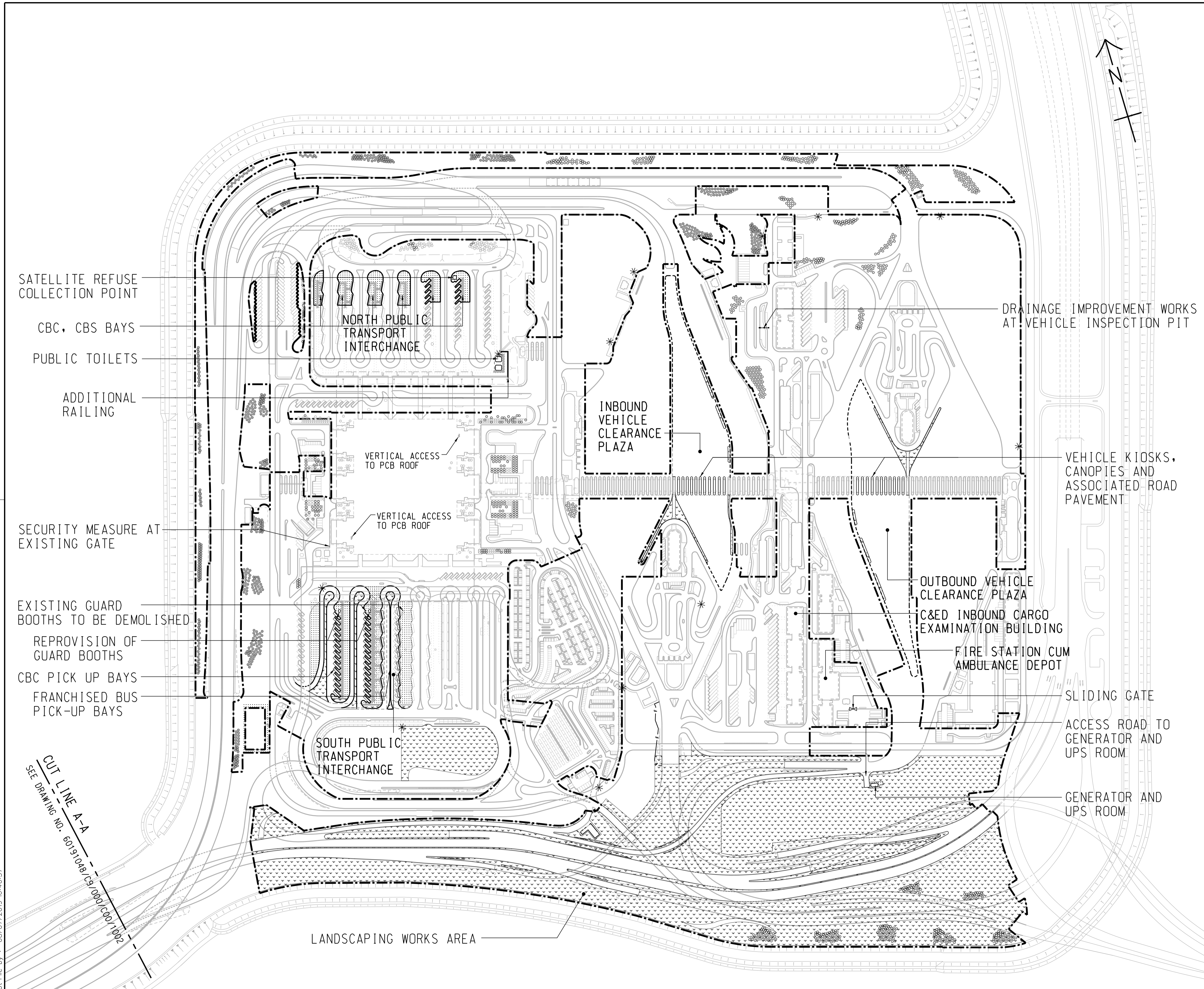
DESIGNED BY 設計	TTHK	CONTRACT NO. 合約編號	HY/2019/01	P. Dir. APPROVED 批准人	SCI 謝子明
----------------	------	-------------------	------------	----------------------	---------

DRAWN BY 繪圖	JC	STATUS 情況	
-------------	----	-----------	--

SCALE 比例 A1 1 : 25000  
 DIMENSIONS ARE IN 尺寸單位 METRES  
 © COPYRIGHT RESERVED 版權所有

Plot File by : 27/6/2019 17:08:25





SATELLITE REFUSE COLLECTION POINT

CBC, CBS BAYS

PUBLIC TOILETS

ADDITIONAL RAILING

SECURITY MEASURE AT EXISTING GATE

EXISTING GUARD BOOTHS TO BE DEMOLISHED

REPROVISION OF GUARD BOOTHS

CBC PICK UP BAYS

FRANCHISED BUS PICK-UP BAYS

DRAINAGE IMPROVEMENT WORKS AT VEHICLE INSPECTION PIT

VEHICLE KIOSKS, CANOPIES AND ASSOCIATED ROAD PAVEMENT

OUTBOUND VEHICLE CLEARANCE PLAZA

C&ED INBOUND CARGO EXAMINATION BUILDING

FIRE STATION CUM AMBULANCE DEPOT

SLIDING GATE

ACCESS ROAD TO GENERATOR AND UPS ROOM

GENERATOR AND UPS ROOM

LANDSCAPING WORKS AREA

CUT LINE A-A  
SEE DRAWING NO. 60191048/C9/000/C00/1002

**REMARKS:**

- IN SPTI:
  - DEMOLISH 2 NOS. EXISTING GUARD BOOTHS AND RE-PROVISION TO REVISED LOCATIONS AS SHOWN
  - CONSTRUCT COVERED WALKWAYS FOR THE NEW FB AND CBC PICK UP BAYS
  - MODIFY EXISTING DUCTING AND POLES FOR ELV SYSTEM, ROAD LIGHTING AND PILLAR BOXES, AND THE ASSOCIATED CABLING WORKS.
  - RELOCATE AND REINSTATE 3 NOS. OF EXISTING BUS OPERATOR OFFICES AND FOOD TRUCK
  - REPLACEMENT OF DRAWPIT COVERS
- IN NPTI:
  - CONSTRUCT COVERED WALKWAYS FOR THE NEW CBC, CBS PICK UP BAYS AND PUBLIC TOILETS
  - PROVIDE AUTOMATIC IRRIGATION SYSTEM AT SLOPES
  - MODIFY EXISTING COVERED WALKWAY AND PROVISION OF LIGHTING
  - REPLACEMENT OF DRAWPIT COVERS
- LANDSCAPING WORKS AREA:
  - CONSTRUCT IRRIGATION SYSTEM WITH 13 NOS. OF NEW WATER POINT AND THE AUTOMATIC IRRIGATION SYSTEM AND PROVIDE MAINTENANCE WORKS
  - LANDSCAPE SOFTWORK, ESTABLISHMENT AND MAINTENANCE WORKS
  - CONSTRUCT RIVER WASHED STONE SWATHE AND MAINTENANCE WORKS
  - PROTECT EXISTING PLANTING AND HARD STRUCTURES
- PASSENGER CLEARANCE BUILDING
  - VERTICAL ACCESS
  - IMPROVEMENT WORKS FOR WATER FEATURE
  - MINOR REMAINING WORKS
  - PROVISION OF NEW CENTRAL AVCSS EQUIPMENT WITH SUFFICIENT CAPACITY, PROCESSING POWER AND STORAGE TO ACCOMMODATE BOTH THE EXISTING AND NEW AVCSS
- VEHICLE KIOSKS AT INBOUND & OUTBOUND VCP
  - PROVISION OF AVCSS AT NEW KIOSKS TO SERVE 24 NOS. VEHICULAR LANES
  - REPLACEMENT OF BARRIER GATE WITH SKIRTING AT 72 NOS. EXISTING KIOSK
- C&ED INBOUND CARGO EXAMINATION BUILDING
  - PROVISION OF NEW CENTRAL AVCSS EQUIPMENT WITH SUFFICIENT CAPACITY, PROCESSING POWER AND STORAGE TO ACCOMMODATE BOTH THE EXISTING AND NEW AVCSS

**ABBREVIATION:**

- SPTI - SOUTH PUBLIC TRANSPORT INTERCHANGE  
 NPTI - NORTH PUBLIC TRANSPORT INTERCHANGE  
 VCP - VEHICLE CLEARANCE PLAZA  
 PCB - PASSENGER CLEARANCE BUILDING  
 FB - FRANCHISED BUS  
 CBC - CROSS BOUNDARY COACH  
 CBS - CROSS BOUNDARY SHUTTLE  
 ELV - EXTRA LOW VOLTAGE  
 AVCSS - AUTOMATIC VEHICLE CLEARANCE SUPPORT SYSTEM

**NOTE:**

- THIS DRAWING TO BE READ IN CONJUNCTION WITH DRAWING NOS. 60191048/C9/000/C00/1002

**LEGEND:**

- SITE BOUNDARY
- AMENITY AREA
- FOOTPATH
- COVERED WALKWAY
- SECURITY FENCE
- TREE PLANTING
- IRRIGATION POINT

REV. 修改	DESCRIPTION 內容修訂	CHK'D 查核	BCC 審核	DATE 日期
-	TENDER DRAWING	TTHK	BCC	JUL 19

路政署 HIGHWAYS DEPARTMENT  
 主要工程管理處 (專責事務) Major Works Project Management Office (Special Duties)

HONG KONG-ZHUHAI-MACAO BRIDGE  
 HONG KONG BOUNDARY CROSSING FACILITIES - PHASE 2 AND OTHER WORKS

GENERAL ARRANGEMENT  
 SHEET 1 OF 2

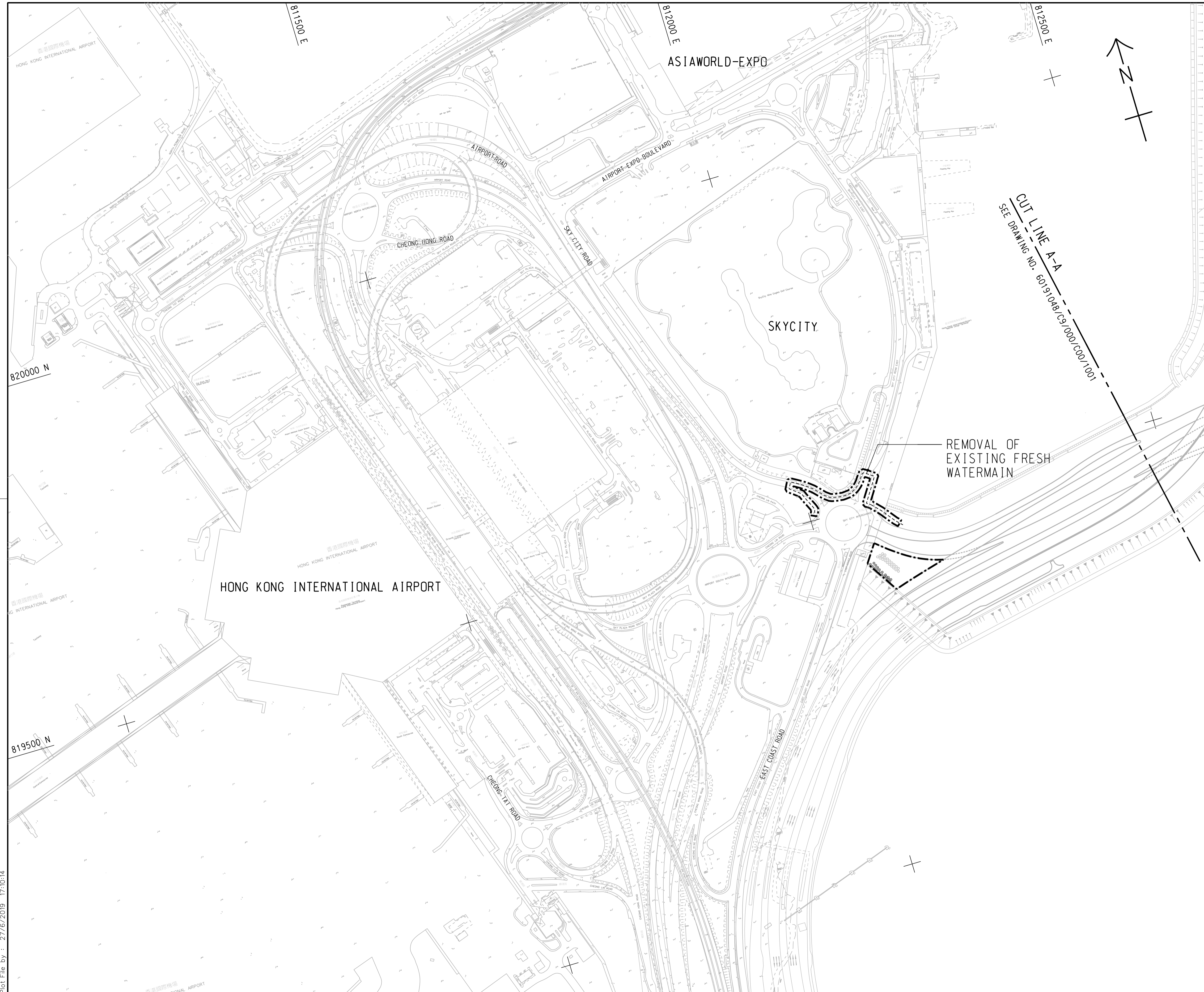
**AECOM** Aedas  
 Rogers Stirk Harbour + Partners  
 BURO HAPPOLD ATKINS ADI

DRG.NO. 60191048/C9/000/C00/1001  
 圖紙編號

DESIGNED BY 設計	TTHK	CONTRACT NO. 合約編號	HY/2019/01	P. Dir. APPROVED 批准人	SC1 王
DRAWN BY 繪圖	JC	STATUS 階段			

SCALE 比例 A1 1 : 2500  
 DIMENSIONS ARE IN 尺寸單位 METRES  
 © COPYRIGHT RESERVED 版權所 有





**NOTE :**

1. THIS DRAWING TO BE READ IN CONJUNCTION WITH DRAWING NOS.60191048/C9/000/C00/1001.

- TENDER DRAWING		TTHK	BCC	JUL 19
REV. 修訂	DESCRIPTION 內容摘要	B.C. 檢核	P.C. 繪圖	DATE 日期

路政署  
**HIGHWAYS DEPARTMENT**  
 主要工程管理處(專責事務)  
 Major Works Project Management Office (Special Duties)

HONG KONG-ZHUHAI-MACAO BRIDGE  
 HONG KONG BOUNDARY CROSSING FACILITIES  
 - PHASE 2 AND OTHER WORKS

**GENERAL ARRANGEMENT**

SHEET 2 OF 2

**AECOM**      Aedas

Rogers Stirk Harbour + Partners  
 BURO HAPPOLD    ATKINS    ADI

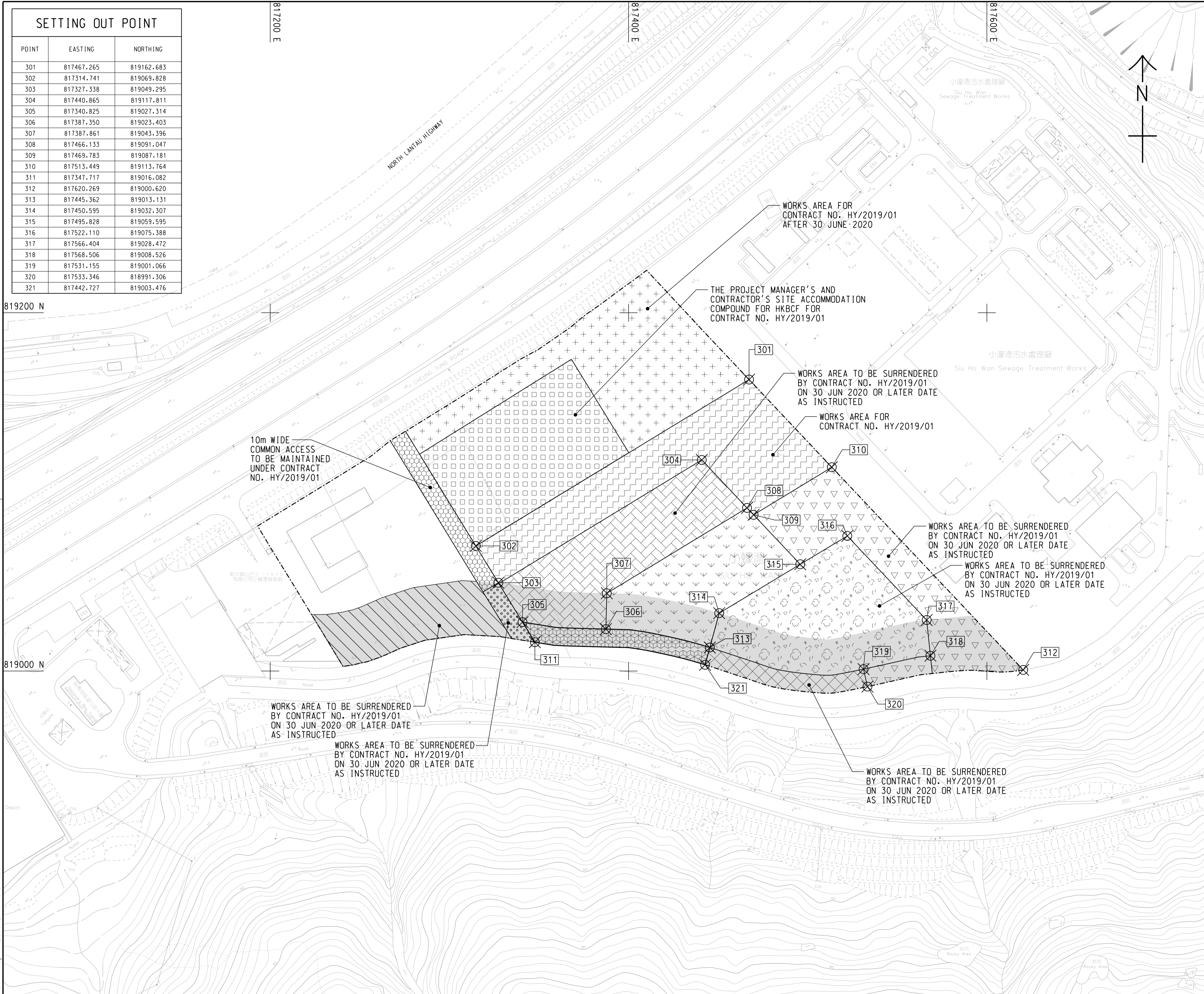
DRG.NO. 60191048/C9/000/C00/1002  
 圖紙編號

DESIGNED BY 設計	TTHK	CONTRACT NO. 合約編號	HY/2019/01	P. Dir. 批准人	APPROVED SC1
-------------------	------	----------------------	------------	----------------	-----------------

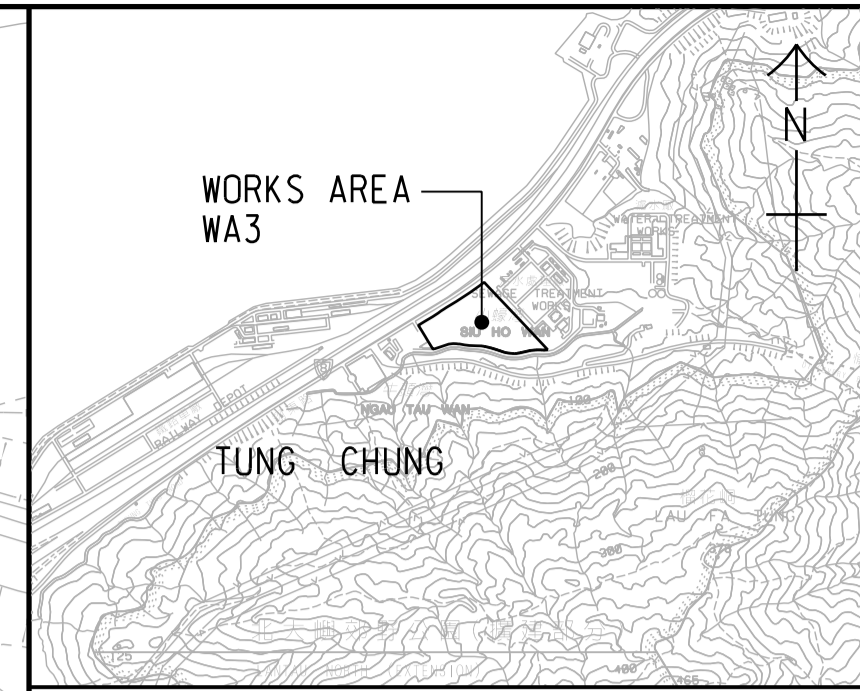
DRAWN BY 繪圖	JC	STATUS 情況	
SCALE 比例	A1 1 : 2500		

DIMENSIONS ARE IN  
 尺寸單位 METRES      © COPYRIGHT RESERVED  
 版權所有





SETTING OUT POINT		
POINT	EASTING	NORTHING
301	817467.265	819162.683
302	817314.741	819069.828
303	817327.338	819049.295
304	817440.865	819117.811
305	817340.825	819027.314
306	817387.350	819023.403
307	817387.861	819043.396
308	817466.133	819091.047
309	817469.783	819087.181
310	817513.449	819113.764
311	817347.717	819016.082
312	817620.269	819000.620
313	817445.362	819013.131
314	817450.595	819032.307
315	817495.828	819059.595
316	817522.110	819075.388
317	817566.404	819028.472
318	817568.506	819008.526
319	817531.155	819001.066
320	817533.346	818991.306
321	817442.727	819003.476



LOCATION PLAN  
SCALE 1 : 25000

NOTES:  
 1. COORDINATES ARE RELATED TO HONG KONG METRIC GRID (1980).  
 2. DIMENSIONS ARE IN MILLIMETER AND CHAINAGE ARE IN METRES UNLESS OTHERWISE SHOWN.

LEGEND:

	WORKS AREA BOUNDARY
	PORTION 3.1
	PORTION 3.2
	PORTION 3.3
	PORTION 3.4
	PORTION 3.5
	PORTION 3.6
	PORTION 3.7
	PORTION 3.8
	PORTION 3.9
	PORTION 3.10
	PORTION 3.11
	PORTION 3.12
	NON-BUILDING AREA 8200m <sup>2</sup> (WHOLE)

TENDER DRAWING		TTHK	BCC	JUL 19
REV. 修改	DESCRIPTION 內容摘要	DATE 日期	BY 繪圖	DATE 日期

路政署 HIGHWAYS DEPARTMENT  
 主要工程管理處(專責事務) Major Works Project Management Office (Special Duties)

HONG KONG-ZHUHAI-MACAO BRIDGE  
 HONG KONG BOUNDARY CROSSING FACILITIES  
 - PHASE 2 AND OTHER WORKS

WORKS AREA WA3

**AECOM** Aedas  
 Rogers Stirk Harbour + Partners  
 BURO HAPPOLD ATKINS ADI

DRG.NO. 60191048/C9/000/C00/1051  
 圖紙編號

DESIGNED BY 設計	TTHK	CONTRACT NO. 合約編號	HY/2019/01	P. Dir. APPROVED 負責人	SCI
DRAWN BY 繪圖	JC	STATUS 情況			

SCALE 比例 1 : 1000  
 DIMENSIONS ARE IN 尺寸單位 METRES  
 © COPYRIGHT RESERVED 版權所有

Plot File by : 28/6/2019 9:34:39