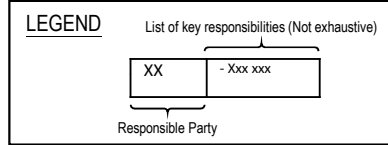
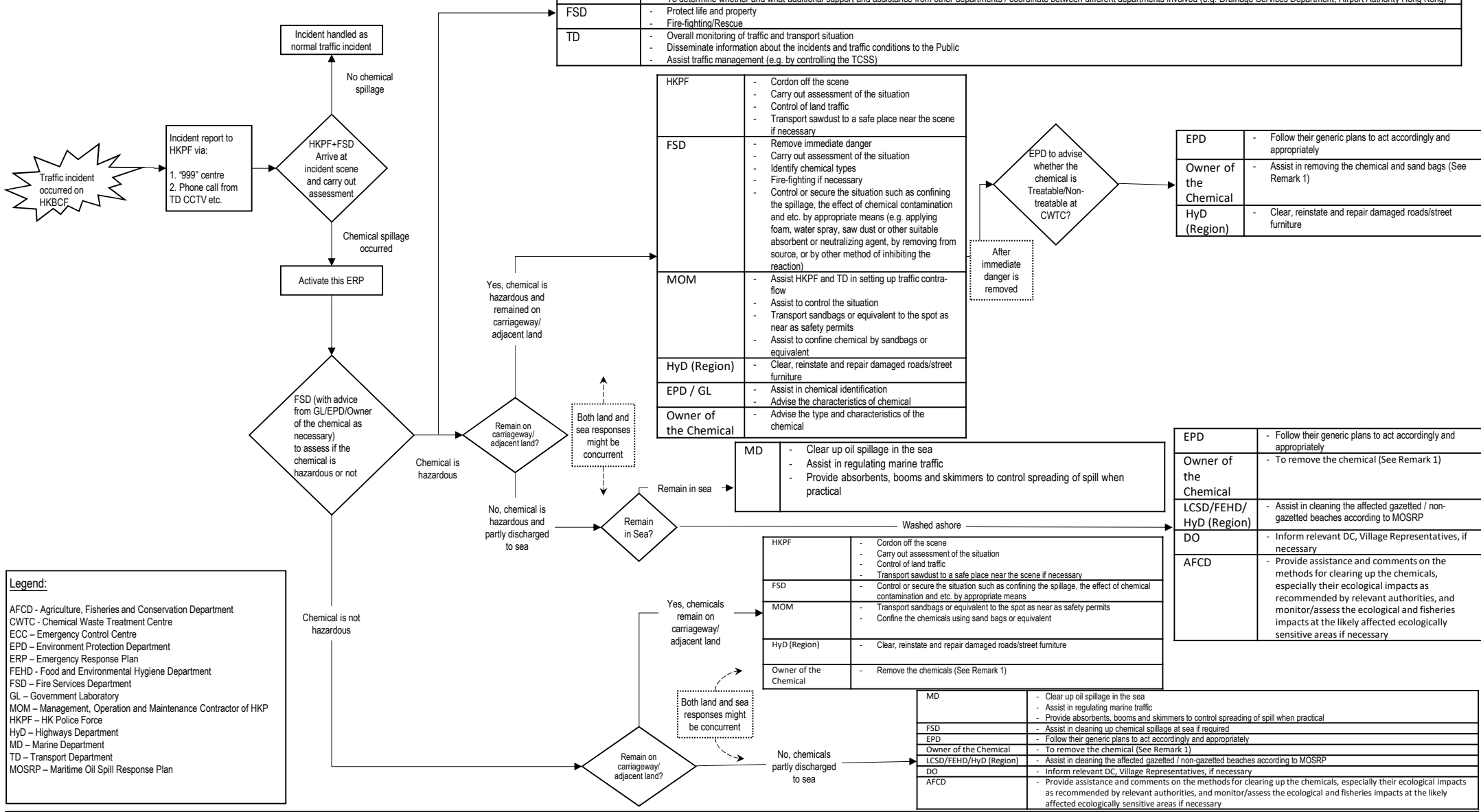


# Appendix 2 – Flow Chart for Responsibilities of Various Parties in Case of Chemical Spillage Incident occurred on Hong Kong-Zhuhai-Macao Bridge, Hong Kong Boundary Crossing Facilities



**Overriding responsibilities for all emergency situations (Specific responsibilities are listed below)**

HKPF	<ul style="list-style-type: none"> <li>- Protect life and property</li> <li>- Keep traffic flowing quickly, smoothly and safety</li> <li>- To determine whether and what additional support and assistance from other departments / coordinate between different departments involved (e.g. Drainage Services Department, Airport Authority Hong Kong)</li> </ul>
FSD	<ul style="list-style-type: none"> <li>- Protect life and property</li> <li>- Fire-fighting/Rescue</li> </ul>
TD	<ul style="list-style-type: none"> <li>- Overall monitoring of traffic and transport situation</li> <li>- Disseminate information about the incidents and traffic conditions to the Public</li> <li>- Assist traffic management (e.g. by controlling the TCSS)</li> </ul>



**Legend:**

- AFCD - Agriculture, Fisheries and Conservation Department
- CWTC - Chemical Waste Treatment Centre
- ECC - Emergency Control Centre
- EPD - Environment Protection Department
- ERP - Emergency Response Plan
- FEHD - Food and Environmental Hygiene Department
- FSD - Fire Services Department
- GL - Government Laboratory
- MOM - Management, Operation and Maintenance Contractor of HKP
- HKPF - HK Police Force
- HyD - Highways Department
- MD - Marine Department
- TD - Transport Department
- MOSRP - Maritime Oil Spill Response Plan

**Remark:**  
1. If the owner of the chemical does not possess suitable plant and machinery for the removal, the owner could hire contractor to do the job, or alternatively Government can do the job and then charge the owner accordingly. If the owner is reluctant to take action, relevant government authorities could prosecute the owner according to the relevant laws of Hong Kong.