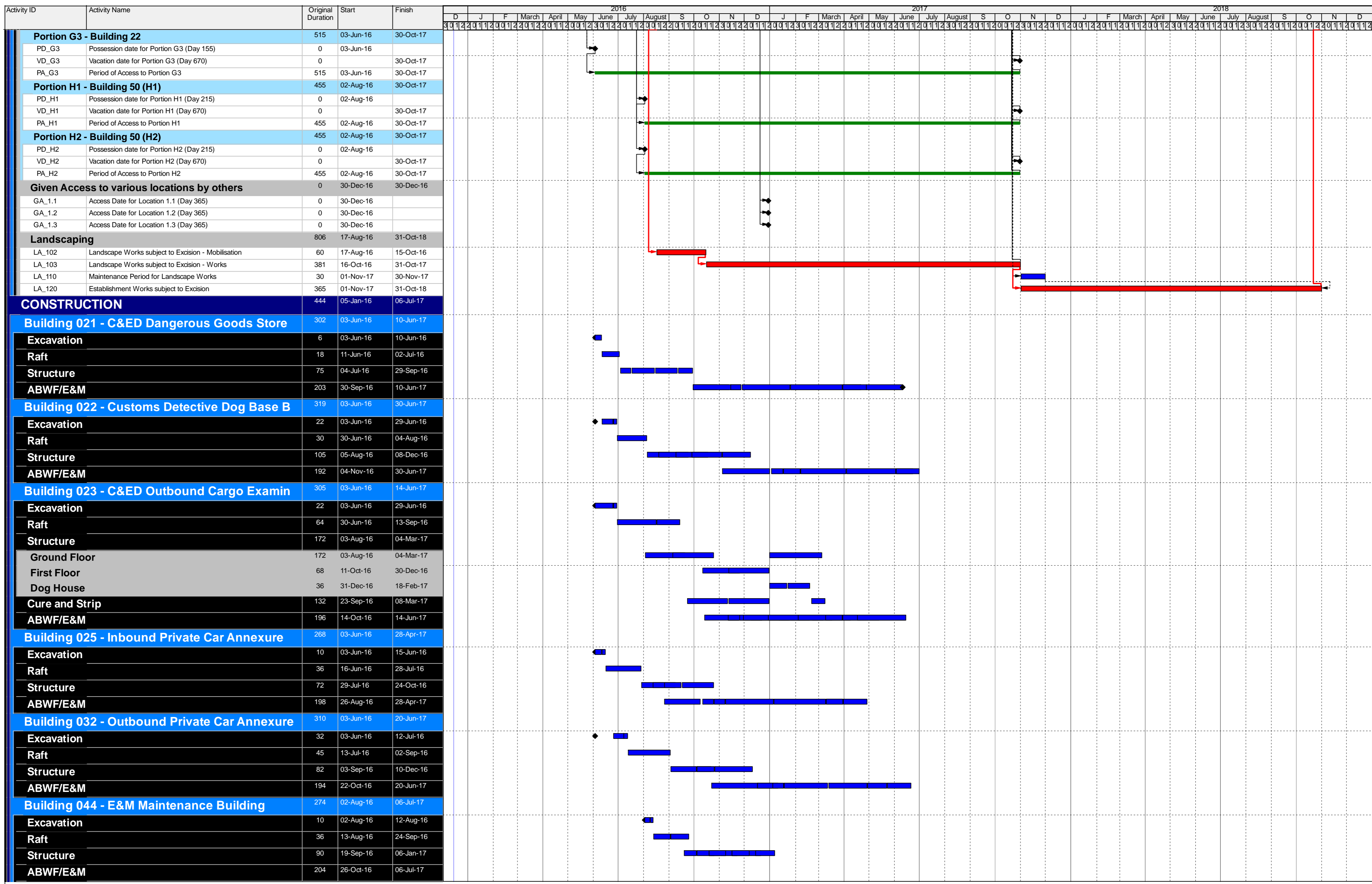


- █ Remaining Level of Effort
- █ Actual Work
- █ Remaining Work
- █ Critical Remaining Work
- ◆ Milestone

Initial Works Programme

Date	Revision	Checked	Approved
21-Dec-15	Initial Works Programme	SGJ	



- Remaining Level of Effort
- Actual Work
- Remaining Work
- Critical Remaining Work
- ◆ Milestone

Initial Works Programme

Date	Revision	Checked	Approved
21-Dec-15	Initial Works Programme	SGJ	

Activity ID	Activity Name	2015			2016				2017				2018				2019		
		Q2	Q3	Q4	Q1	Q2	Q3	Q4	Q1	Q2	Q3	Q4	Q1	Q2	Q3	Q4	Q1	Q2	Q3
Hong Kong-Zhuhai_Macao Bridge Hong Kong Boundary Crossing F		<ul style="list-style-type: none"> Key Dates Interface Activities Site and Facility Inspection <ul style="list-style-type: none"> JS1200 Pre Site and Facility Inspection by Contractor at Location 4 - Deg2 JS1210 Joint Site and Facility Inspection with Interface Contractor at Location 4 - Deg2 JS1620 Pre Site and Facility Inspection by Contractor at Location 14 - Deg2 JS1630 Joint Site and Facility Inspection with Interface Contractor at Location 14 - Deg2 JS1760 Pre Site and Facility Inspection by Contractor at Location 18 - Deg1 JS1770 Joint Site and Facility Inspection with Interface Contractor at Location 18 - Deg1 JS1780 Pre Site and Facility Inspection by Contractor at Location 18 - Deg2 JS1790 Joint Site and Facility Inspection with Interface Contractor at Location 18 - Deg2 Access Dates <ul style="list-style-type: none"> AD1000 Location 1(PCB (001) Basement)-Deg1 (270d) AD1010 Location 1(PCB (001) Basement)-Deg2 (380d) AD1020 Location 1(PCB (001) ELV Room (Grid Line E3))-Deg1 (270d) AD1030 Location 1(PCB (001) ELV Room (Grid Line E3))-Deg2 (380d) AD1040 Location 2(PCB (001) First Floor Main Server Room)-Deg1 (330d) AD1050 Location 2(PCB (001) First Floor Main Server Room)-Deg2 (380d) AD1060 Location 2(PCB (001) First Floor Main Server Room) - For Server Installation - Deg2 (380d) AD1070 Location 2(PCB (001) Ground Floor ELV Room (Grid Line E3)) - Deg1 (330d) AD1080 Location 2(PCB (001) Ground Floor DOH Port Health Control Room (Grid Line BD5)) - Deg1 (330d) AD1090 Location 2(PCB (001) Ground Floor DOH Port Health Control Room (Grid Line BD5)) - Deg2 (380d) AD1130 Location 3(Inbd Cargo Exam Bldg (037) Platform Control Room)-Deg2 (500d) AD1150 Location 3(Inbd Cargo Exam Bldg (037) Inspector Offices 128,129,130,131,128,129,14) AD1170 Location 3a(Inbd Cargo Exam Bldg (037) ROCARS Room)-Deg2 (480d) AD1190 Location 3a(Inbd Cargo Exam Bldg (037) Main Server Room)-Deg2 (480d) AD1200 Location 3a(Inbd Cargo Exam Bldg (037) Main Server Room) - For Server installation - Deg2 (480d) AD1220 Location 4(Outbd Cargo Exam Bldg (023))-Deg2 (680d) AD1240 Location 4a(Outbd Cargo Exam Bldg (023))-Deg2 (630d) AD1270 Location 6(Common Utility Enclosure & Staff Subway)-Deg1 (400d) AD1290 Location 7(Common Utility Enclosure & Staff Subway)-Deg1 (270d) AD1300 Location 8(Inbd Private Car Annex (025))-Deg1 (430d) AD1310 Location 8(Inbd Private Car Annex (025))-Deg2 (580d) AD1320 Location 8(Inbd Private Car Annex (025) Canopy)-Deg1 (430d) AD1330 Location 8(Inbd Private Car Annex (025) Canopy)-Deg2 (580d) AD1340 Location 9(Outbd Private Car Annex (032))-Deg1 (520d) AD1350 Location 9(Outbd Private Car Annex (032))-Deg2 (660d) AD1360 Location 9(Outbd Private Car Annex (032) Canopy)-Deg1 (520d) AD1370 Location 9(Outbd Private Car Annex (032) Canopy)-Deg2 (660d) AD1501 Location 12(Inbd Private Car Kiosks(027))-Deg1 (400d) Phase 2 AD1510 Location 12(Inbd Private Car Kiosks(027))-Deg2 (480d) Phase 1 AD1511 Location 12(Inbd Private Car Kiosks(027))-Deg2 (480d) Phase 2 AD1521 Location 12(Inbd Private Car Kiosks(027) Canopy)-Deg1 (400d) Phase 2 																	

Programme No.: HZMB-DWP
Data Date: 14-Aug-15

- Actual Level of Effort
- Primary Baseline
- Actual Work
- Remaining Work
- Critical Remaining Work
- Baseline Milestone
- Milestone

summary

Hong Kong-Zhuhai-Macao Bridge
Hong Kong Boundary Crossing
Facilities - Automatic Vehicle
Clearance Support System (AVCSS)

Date	Revision	Checked	Approved
14-Nov-16	Rev.: 0	WC	LC
10-Mar-17	Rev.: 1.0a	WC	LC
5-May-17	Rev.: 1.0b	WC	LC

Activity ID	Activity Name	2015			2016				2017				2018				2019			
		Q2	Q3	Q4	Q1	Q2	Q3	Q4	Q1	Q2	Q3	Q4	Q1	Q2	Q3	Q4	Q1	Q2	Q3	
AD1530	Location 12(Inbd Private Car Kiosks(027) Canopy)-Deg2 (480d) Phase 1																			
AD1531	Location 12(Inbd Private Car Kiosks(027) Canopy)-Deg2 (480d) Phase 2																			
AD1540	Location 12(Inbd GV Kiosks (028))-Deg1 (400d) Phase 1																			
AD1541	Location 12(Inbd GV Kiosks (028))-Deg1 (400d) Phase 2																			
AD1550	Location 12(Inbd GV Kiosks (028))-Deg2 (480d) Phase 1																			
AD1551	Location 12(Inbd GV Kiosks (028))-Deg2 (480d) Phase 2																			
AD1560	Location 12(Inbd GV Kiosks (028) Canopy)-Deg1 (400d) Phase 1																			
AD1561	Location 12(Inbd GV Kiosks (028) Canopy)-Deg1 (400d) Phase 2																			
AD1570	Location 12(Inbd GV Kiosks (028) Canopy)-Deg2 (480d) Phase 1																			
AD1571	Location 12(Inbd GV Kiosks (028) Canopy)-Deg2 (480d) Phase 2																			
AD1580	Location 12(Outbd GV Kiosks (029))-Deg1 (400d) Phase 1																			
AD1581	Location 12(Outbd GV Kiosks (029))-Deg1 (400d) Phase 2																			
AD1590	Location 12(Outbd GV Kiosks (029))-Deg2 (480d) Phase 1																			
AD1591	Location 12(Outbd GV Kiosks (029))-Deg2 (480d) Phase 2																			
AD1600	Location 12(Outbd GV Kiosks (029) Canopy)-Deg1 (400d) Phase 1																			
AD1601	Location 12(Outbd GV Kiosks (029) Canopy)-Deg1 (400d) Phase 2																			
AD1610	Location 12(Outbd GV Kiosks (029) Canopy)-Deg2 (480d) Phase 1																			
AD1611	Location 12(Outbd GV Kiosks (029) Canopy)-Deg2 (480d) Phase 2																			
AD1620	Location 13(Outbd Private Car Kiosks (030))-Deg1 (480d) Phase 1																			
AD1630	Location 13(Outbd Private Car Kiosks (030))-Deg2 (550d) Phase 1																			
AD1640	Location 13(Outbd Private Car Kiosks (030) Canopy)-Deg1 (480d) Phase 1																			
AD1650	Location 13(Outbd Private Car Kiosks (030) Canopy)-Deg2 (550d) Phase 1																			
AD1660	Location 14(Future-Outbd/Inbd Private Car Kiosks)-Deg1 (610d)																			
AD1670	Location 14(Future-Outbd/Inbd Private Car Kiosks)-Deg2 (680d)																			
AD1700	Location 16(Outbd Traffic Control Kiosk (101))-Deg1 (400d)																			
AD1710	Location 16(Outbd Traffic Control Kiosk (101))-Deg2 (480d)																			
AD1740	Location 18(Outbd Private Car Exam Bldg(024))-Deg1 (-)																			
AD1750	Location 18(Outbd Private Car Exam Bldg(024))-Deg2 (670d)																			
AD1780	(by C03) Underground Ducting (UUD1.1) between CUE and Inbd Cargo Exam Bldg (0																			
AD1790	(by C03) (UUD1.2) between Inbd Cargo Exam Bldg South (037[S]) and DOH Cargo C																			
AD1800	(by C03) (UUD2) between Inbd Cargo Exam Bldg North (037[N]) and Inbd Vehicle Cle																			
AD1810	(by C03) (UUD9.1) btw Inbd Cargo Exam Bldg S.(037[S]) & Inbd PC Exam Bldg(033) &																			
AD1820	(by C03) (UUD9.3) between Inbd Private Car Exam Bldg (033) and Inbd Vehicle Clear																			
AD1830	(by C03) (UUD9.2) between Inbd Private Car Exam Bldg (033) and Inbd Vehicle Clear																			
AD1840	(by C03) Underground Ducting (UUD3.1) between CUE to Outbd Cargo Exam Bldg (0																			
AD1850	(by C03) (UUD3.2) btw Outbd Car Exam Bldg (023) and Outbd PC Exam Bldg (024) a																			
AD1860	(byC03) (UUD4.1) between Outbd Private Car Exam Bldg (024) and Outbd Vehicle Cle																			
AD1870	(byC03) (UUD5) between Outbd Car Exam Bldg South (023[S]) and Outbd Vehicle Cle																			
AD1880	(by C03) Underground Ducting (UUD8) between CUE and Outbd PCA (032)																			
AD1910	(by C03) Inbound Vehicle Clearance Plaza																			
AD1920	(by C03) Outbound Vehicle Clearance Plaza																			
Interfaces Provisions Mobilization Provisions WA4 Site Erection & Servicing																				

Programme No.: HZMB-DWP Data Date: 14-Aug-15		Hong Kong-Zhuhai-Macao Bridge Hong Kong Boundary Crossing Facilities - Automatic Vehicle Clearance Support System (AVCSS)	Date	Revision	Checked	Approved
			14-Nov-16	Rev.: 0	WC	LC
			10-Mar-17	Rev.: 1.0a	WC	LC
			5-May-17	Rev.: 1.0b	WC	LC

Activity ID	Activity Name	2015			2016				2017				2018				2019		
		Q2	Q3	Q4	Q1	Q2	Q3	Q4	Q1	Q2	Q3	Q4	Q1	Q2	Q3	Q4	Q1	Q2	Q3
<ul style="list-style-type: none"> ■ Detailed Design Specification ■ Contruction Design and Management ■ Supply/Manufacture Mock-up items ■ Supply/Manufacture prototypes ■ Software Design, Coding and Testing <ul style="list-style-type: none"> ■ Coding ■ Software System Inetgration ■ Prototype & Software Simulation Tests ■ Procurement - Phase 1 / Section I ■ Supply/Manufacture products for FAT ■ Factory Acceptance Test (FAT) ■ Supply/Manufacture Equipment ■ Delivery and Bench Acceptance Test for Phase 1/ Section I ■ Installation - Phase 1 / Section I <ul style="list-style-type: none"> ■ Location 1(PCB (001) Basement) <ul style="list-style-type: none"> ■ EM1920 L1(001)B/F - Cable Laying and termination at Location 1 and Location 2 ■ Location 1(PCB (001) ELV Room (Grid Line E3)) <ul style="list-style-type: none"> ■ EM1940 L1(001)ELV Rm - Cable Laying and termination at Location 1 and Location 2 ■ Location 2(PCB (001) Ground Floor ELV Room (Grid Line E3)) <ul style="list-style-type: none"> ■ EM1960 L2(001)ELV Rm - Cable Laying and termination at Location 1 and Location 2 ■ Location 2(PCB (001) Ground Floor DOH Port Health Control Room (Grid Line BD5)) <ul style="list-style-type: none"> ■ EM1080 L2(001)Heath Ctrl Rm - Cable Laying and termination at Location 1 and Location 2 ■ EM1100 L2(001)Heath Ctrl Rm - Cable Splicing and Testing and Labeling ■ EM1120 L2(001)Health Ctrl Rm - Intercom and PA system Installation ■ EM1140 L2(001)Heath Ctrl Rm - Intercom and PA system tuning ■ Location 2(PCB (001) First Floor Main Server Room) <ul style="list-style-type: none"> ■ EM1000 L2(001)Main Server Rm - Cable Laying and termination at Location 1 and Location 2 ■ EM1020 L2(001)Main Server Rm - Cable Splicing and Testing and Labeling ■ EM1040 L2(001)Main Server Rm - AVCSS Network and Server Installation ■ EM1060 L2(001)Main Server Rm - AVCSS Network and Server Tuning ■ Location 3(Inbd Cargo Exam Bldg (037) MDF Room) ■ Location 3(Inbd Cargo Exam Bldg (037) ELV Room) ■ Location 3(Inbd Cargo Exam Bldg (037) Inspector Offices 128,129,130,131,128,129,141) <ul style="list-style-type: none"> ■ EM2020 L3(037)Inspec Offices - Cable Laying and termination in Location 3 and Location 3a ■ EM2040 L3(037)Inspec Offices - Cable Splicing and Testing and Labeling ■ EM2060 L3(037)Inspec Offices - AVCSS SURCON WS and 55" LCD Installation ■ EM2080 L3(037)Inspec Offices - VTS WS Installation ■ EM2100 L3(037)Inspec Offices - SURCON and WS Tuning ■ Location 3(Inbd Cargo Exam Bldg (037) Platform Control Room) <ul style="list-style-type: none"> ■ EM1160 L3(037)PLF Ctrl Rm - Cable Laying and termination in Location 3 and Location 3a ■ EM1180 L3(037)PLF Ctrl Rm - Cable Splicing and Testing and Labeling ■ EM1200 L3(037)PLF Ctrl Rm - AVCSS SYSCON WS and 55" TV Wall Installation ■ EM1220 L3(037)PLF Ctrl Rm - AVCSS SYSCON WS Tuning 		<div style="display: flex; flex-direction: row-reverse;"> <div style="margin-right: 10px;"> <ul style="list-style-type: none"> ■ 01-Sep-17; Installation - Phase 1 / Section I ▼ 22-Jun-17; Location:1(PCB (001);Basement) ■ L1(001)B/F - Cable Laying and termination at Location ▼ 22-Jun-17; Location:1(PCB (001);ELV Room (Grid Line ■ L1(001)ELV Rm - Cable Laying and termination at Loca ▼ 22-Jun-17; Location:2(PCB (001);Ground Floor ELV R ■ L2(001)ELV Rm - Cable Laying and termination at Loca ▼ 18-Aug-17; Location 2(PCB (001);Ground Floor DO ■ L2(001)Heath Ctrl Rm - Cable Laying and termination ■ L2(001)Heath Ctrl Rm - Cable Splicing and Testing and ■ L2(001)Health Ctrl Rm - Intercom and PA system In ■ L2(001)Health Ctrl Rm - Intercom and PA system tu ▼ 21-Aug-17; Location 2(PCB (001) First Floor Main ■ L2(001)Main Server Rm - Cable Laying and termination ■ L2(001)Main Server Rm - Cable Splicing and Testing ■ L2(001)Main Server Rm - AVCSS Network and Ser ■ L2(001)Main Server Rm - AVCSS Network and Se </div> <div style="margin-right: 10px;"> <ul style="list-style-type: none"> ▼ 07-Aug-17; Location 3(Inbd Cargo Exam Bldg (037 ■ L3(037)Inspec Offices - Cable Laying and termination in ■ L3(037)Inspec Offices - Cable Splicing and Testing and ■ L3(037)Inspec Offices - AVCSS SURCON WS and 5 ■ L3(037)Inspec Offices - VTS WS Installation ■ L3(037)Inspec Offices - SURCON and WS Tuning </div> <div style="margin-right: 10px;"> <ul style="list-style-type: none"> ▼ 07-Aug-17; Location 3(Inbd Cargo Exam Bldg (037 ■ L3(037)PLF Ctrl Rm - Cable Laying and termination in ■ L3(037)PLF Ctrl Rm - Cable Splicing and Testing and ■ L3(037)PLF Ctrl Rm - AVCSS SYSCON WS and 55 ■ L3(037)PLF Ctrl Rm - AVCSS SYSCON WS Tuning </div> </div>																	

Programme No.: HZMB-DWP
Data Date: 14-Aug-15

- Actual Level of Effort
- Primary Baseline
- Actual Work
- Remaining Work
- Critical Remaining Work
- ◆ Baseline Milestone
- ◆ Milestone

summary

Hong Kong-Zhuhai-Macao Bridge
Hong Kong Boundary Crossing
Facilities - Automatic Vehicle
Clearance Support System (AVCSS)

Date	Revision	Checked	Approved
14-Nov-16	Rev.: 0	WC	LC
10-Mar-17	Rev.: 1.0a	WC	LC
5-May-17	Rev.: 1.0b	WC	LC

Activity ID	Activity Name	2015			2016				2017				2018				2019		
		Q2	Q3	Q4	Q1	Q2	Q3	Q4	Q1	Q2	Q3	Q4	Q1	Q2	Q3	Q4	Q1	Q2	Q3
Location 3a(Inbd Cargo Exam Bldg (037) ROCARS Room)		<ul style="list-style-type: none"> EM1240 L3a(037) ROCARS Rm - Cable Laying and termination in Location 3 and Location 3a EM1260 L3a(037) ROCARS Rm - Cable Splicing and Testing and Labeling EM1280 L3a(037) ROCARS Rm - AVCSS SYSCON and SURCON and Intercom Installation EM1300 L3a(037) ROCARS Rm - VTS WS Installation EM1320 L3a(037) ROCARS Rm - VID WS Installation EM1340 L3a(037) ROCARS Rm - SURCON and SYSCON and WS Tuning 																	
Location 3a(Inbd Cargo Exam Bldg (037) Main Server Room)		<ul style="list-style-type: none"> EM2120 L3a(037)Main Server Rm - Cable Laying and termination in Location 3 and Location 3a EM2140 L3a(037)Main Server Rm - Cable Splicing and Testing and Labeling EM2160 L3a(037)Main Server Rm - AVCSS Server Installation EM2180 L3a(037)Main Server Rm - VTS Server Installation EM2200 L3a(037)Main Server Rm - Servers Tuning 																	
Location 4(Outbd Cargo Exam Bldg (023) MDF Room)		<ul style="list-style-type: none"> EM2240 L4a(023)ROCARS Rm - Cable Splicing and Testing and Labeling EM2260 L4a(023)ROCARS Rm - AVCSS SYSCON and SURCON and Intercom Installation EM2280 L4a(023)ROCARS Rm - VTS WS Installation EM2300 L4a(023)ROCARS Rm - SYSCON and SURCON and WS Tuning 																	
Location 5(Common Utility Enclosure & Staff Subway)		<ul style="list-style-type: none"> EM2341 L5(CUE) - Cable Laying between Location 5 and Location 6 EM2361 L5(CUE) - Cable Laying between Location 5 and Location 7 EM2380 L5(CUE) - Cable Splicing and Testing and Labeling 																	
Location 6(Common Utility Enclosure & Staff Subway)		<ul style="list-style-type: none"> EM2400 L6(CUE) - Cable Laying between Location 5 and Location 6 EM2420 L6(CUE) - Cable Splicing and Testing and Labeling 																	
Location 7(Common Utility Enclosure & Staff Subway)		<ul style="list-style-type: none"> EM2440 L7(CUE) - Cable Laying between Location 5 and Location 7 EM2460 L7(CUE) - Cable Splicing and Testing and Labeling 																	
Location 12(Inbd Private Car Kiosks,GV Kiosks (027,028,029))		<ul style="list-style-type: none"> Inbd Private Car Kiosks(027) - 9 nos (Phase 1) <ul style="list-style-type: none"> EM1500 L12(027)(9nos P1) - Cable Splicing and Testing and Labeling EM1520 L12(027)(9nos P1) - AVCSS/MOM Kiosk Equipment Installation (9 nos) EM1541 L12(027)(9nos P1) - XDB installation (18 nos) EM1542 L12(027)(9nos P1) - ODB installation (5 nos) EM1543 L12(027)(9nos P1) - ODB installation (2 nos) EM1544 L12(027)(9nos P1) - ODB installation (2 nos) EM1560 L12(027)(9nos P1) - Loop installation (45 nos) Inbd Goods Vehicle Kiosks(028) - 5 nos (Phase 1) <ul style="list-style-type: none"> EM1620 L12(028)(5nos P1) - Cable Laying and termination EM1640 L12(028)(5nos P1) - Cable Splicing and Testing and Labeling EM1660 L12(028)(5nos P1) - AVCSS/MOM Kiosk Equipment Installation (5 nos) EM1681 L12(028)(5nos P1) - XDB installation (10 nos) EM1682 L12(028)(5nos P1) - ODB installation (3 nos) EM1683 L12(028)(5nos P1) - ODB installation (2 nos) 																	

Programme No.: HZMB-DWP
Data Date: 14-Aug-15

- Actual Level of Effort
- Primary Baseline
- Actual Work
- Remaining Work
- Critical Remaining Work
- Baseline Milestone
- Milestone

summary

Hong Kong-Zhuhai-Macao Bridge
Hong Kong Boundary Crossing
Facilities - Automatic Vehicle
Clearance Support System (AVCSS)

Date	Revision	Checked	Approved
14-Nov-16	Rev.: 0	WC	LC
10-Mar-17	Rev.: 1.0a	WC	LC
5-May-17	Rev.: 1.0b	WC	LC

Activity ID	Activity Name	2015		2016				2017				2018				2019				
		Q2	Q3	Q4	Q1	Q2	Q3	Q4	Q1	Q2	Q3	Q4	Q1	Q2	Q3	Q4	Q1	Q2	Q3	
EM1700	L12(028)(5nos P1) - AIOP Installation (5 nos)																			
EM1720	L12(028)(5nos P1) - Loop installation (25 nos)																			
Outbd Goods Vehicle Kiosks(029) - 5 nos (Phase 1)																				
EM1740	L12(029)(5nos P1) - Cable Containment in Kiosks																			
EM1760	L12(029)(5nos P1) - Cable Laying and termination																			
EM1780	L12(029)(5nos P1) - Cable Splicing and Testing and Labeling																			
EM1800	L12(029)(5nos P1) - AVCSS/MOM Kiosk Equipment Installation (5 nos)																			
EM1821	L12(029)(5nos P1) - XDB installation (5 nos)																			
EM1822	L12(029)(5nos P1) - ODB installation (4 nos)																			
EM1823	L12(029)(5nos P1) - ODB installation (1 nos)																			
EM1840	L12(029)(5nos P1) - AIOP Installation (5 nos)																			
Location 13(Outbd Private Car Kiosks (030)) - 9 nos (Phase 1)																				
EM2520	L13(030)(9nos P1) - Cable Containment in Kiosks																			
EM2540	L13(030)(9nos P1) - Cable Laying and termination																			
EM2560	L13(030)(9nos P1) - Cable Splicing and Testing and Labeling																			
EM2580	L13(030)(9nos P1) - AVCSS/MOM Kiosk Equipment Installation (9 nos)																			
EM2601	L13(030)(9nos P1) - XDB installation (9 nos)																			
EM2602	L13(030)(9nos P1) - ODB installation (7 nos)																			
Location 14(Future-Outbd/Inbd Private Car Kiosks) - 6+6 nos																				
EM1440	L14 - Cable Laying and termination at ELV Room in CUE																			
Location 15(Inbd Traffic Control Kiosk (100))																				
Location 16(Outbd Traffic Control Kiosk (101))																				
EM2760	L16(101) - Cable Laying and termination																			
EM2780	L16(101) - Cable Splicing and Testing and Labeling																			
EM2800	L16(101) - AVCSS SYSCON and SURCON Installation																			
EM2820	L16(101) - VTS WS and 55" LCD Installation																			
Location 17(Inbd Private Car Exam Bldg(033) Operational Office)																				
Location 18 (Outbd Private Car Exam Bldg(024) Operational Office)																				
EM2940	L18(024) - Cable Laying and termination																			
EM2960	L18(024) - Cable Splicing and Testing and Labeling																			
EM2980	L18(024) - AVCSS SURCON and 55" LCD Installation																			
EM3000	L18(024) - SURCON Tuning																			
Location 19 (DOH Cargo Clearance Bldg(043))																				
EM1360	L19(043) - Cable Laying and termination																			
EM1380	L19(043) - Cable Splicing and Testing and Labeling																			
EM1400	L19(043) - PA and Intercom Installation																			
EM1420	L19(043) - PA and Intercom Tuning																			
Inbd Vehicle Clearance Plaza - 8 nos VID, 7 nos VTS, 4 nos TLS																				
EM3020	Inbound VID cabling from pillar box to VID field equipment																			
EM3040	Inbound VTS cabling from pillar box to VTS field equipment																			
EM3060	Inbound TLS cabling from pillar box to TLS field equipment																			
EM3080	Inbound VID field equipment installation (8 VID)																			
EM3100	Inbound VTS field equipment installation (4 RFID + 3 Cameras)																			
EM3120	Inbound TLS field equipment installation (4 TLS)																			
EM3140	Inbound VID and VTS and TLS field equipment tuning																			

Programme No.: HZMB-DWP
Data Date: 14-Aug-15

- Actual Level of Effort
- Primary Baseline
- Actual Work
- Remaining Work
- Critical Remaining Work
- Baseline Milestone
- Milestone

▼ summary

Hong Kong-Zhuhai-Macao Bridge
Hong Kong Boundary Crossing
Facilities - Automatic Vehicle
Clearance Support System (AVCSS)

Date	Revision	Checked	Approved
14-Nov-16	Rev.: 0	WC	LC
10-Mar-17	Rev.: 1.0a	WC	LC
5-May-17	Rev.: 1.0b	WC	LC

Activity ID	Activity Name	2015			2016				2017				2018				2019		
		Q2	Q3	Q4	Q1	Q2	Q3	Q4	Q1	Q2	Q3	Q4	Q1	Q2	Q3	Q4	Q1	Q2	Q3
Outbd Vehicle Clearance Plaza - 8 nos VID, 6 nos VTS, 4 nos TLS		<ul style="list-style-type: none"> EM3160 Outbound VID cabling from pillar box to VID field equipment EM3180 Outbound VTS cabling from pillar box to VTS field equipment EM3200 Outbound TLS cabling from pillar box to TLS field equipment EM3220 Outbound VID field equipment installation (8 VID) EM3240 Outbound VTS field equipment installation (3 RFID + 3 Cameras) EM3260 Outbound TLS field equipment installation (4 TLS) EM3280 Outbound VID and VTS and TLS field equipment tuning 																	
Underground Ducting (UUD1.1) between CUE and Inbd Cargo Exam Bldg (037)		<ul style="list-style-type: none"> UD1000 (UUD1.1 [CUE-037]) - Cable laying and termination 																	
(UUD1.2) between Inbd Cargo Exam Bldg South (037[S]) and DOH Cargo Clearance Bldg (037[S])		<ul style="list-style-type: none"> UD1060 (UUD1.2 [037[S]-043]) - Cable laying and termination 																	
Underground Ducting (UUD6) between CUE and Shuttle Bus Kiosk (006) and Inbd Private Car Exam Bldg (033)		<ul style="list-style-type: none"> (UUD9.1) btw IB Cargo Exam Bldg South(037[S]) & IB PC Exam Bldg(033) & IB Traffic Control Bldg (033) 																	
(UUD9.1) btw IB Cargo Exam Bldg South(037[S]) & IB PC Exam Bldg(033) & IB Traffic Control Bldg (033)		<ul style="list-style-type: none"> UD1040 (UUD9.1 [037[S]-033-100]) - Cable laying and termination 																	
(UUD2) between Inbd Cargo Exam Bldg North (037[N]) to Inbd VCP		<ul style="list-style-type: none"> UD1010 (UUD2 [037[N]-IB VCP]) - Cable laying and termination 																	
(UUD9.3) between Inbd Private Car Exam Bldg (033) and Inbd Vehicle Clearance Plaza		<ul style="list-style-type: none"> UD1070 (UUD9.3 [033-IB VCP[W]]) - Cable laying and termination 																	
(UUD9.2) between Inbd Private Car Exam Bldg (033) and Inbd Vehicle Clearance Plaza		<ul style="list-style-type: none"> UD1020 (UUD9.2 [033-IB VCP[E]]) - Cable laying and termination 																	
Underground Ducting (UUD7) between PCB(001) and Inbd Coach Kiosks(010)		<ul style="list-style-type: none"> UD1030 (UUD3.1 [CUE-023]) - Cable laying and termination 																	
Underground Ducting (UUD3.1) between CUE and Outbd Cargo Exam Bldg (023)		<ul style="list-style-type: none"> (UUD3.2) btw OB Car Exam Bldg(023) & OB PC Exam Bldg(024) & OB Traffic Control Bldg (024) 																	
(UUD3.2) btw OB Car Exam Bldg(023) & OB PC Exam Bldg(024) & OB Traffic Control Bldg (024)		<ul style="list-style-type: none"> UD1050 (UUD3.2 [023-024-101]) - Cable laying and termination 																	
Underground Ducting (UUD8) between CUE and Outbd PCA (032)		<ul style="list-style-type: none"> UD1100 (UUD8 [CUE-032]) - Cable laying and termination 																	
(UUD4.1) between Outbd PC Exam Bldg (024) and Outbd Vehicle Clearance Plaza		<ul style="list-style-type: none"> UD1080 (UUD4.1 [024-OB VCP]) - Cable laying and termination 																	
(UUD5) between Outbd Car Exam Bldg (023[S]) and Outbd Vehicle Clearance Plaza		<ul style="list-style-type: none"> UD1090 (UUD5 [023[S]-OB VCP]) - Cable laying and termination 																	
Initial On-Site Test and Commissioning / Pre-SAT (Phase 1 / Section I)																			
Site Acceptance Test (Phase 1 / Section I)																			
Security Risk Assessment and Audit																			
Operability Period Test (Phase 1 / Section I)																			
Completion (Phase 1 /Section I)																			
Training and Document (Phase 1 /Section I)																			
Operation (Phase 1 /Section I)																			
Engineering Support for Phase 1 / Section I																			
Procurement - Phase 2 / Section II																			
Delivery and Bench Acceptance Test for Phase 2/Section II																			
Installation - Phase 2 / Section II																			


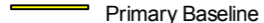

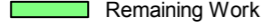
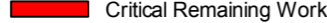


Programme No.: HZMB-DWP Data Date: 14-Aug-15	<ul style="list-style-type: none"> Actual Level of Effort Primary Baseline Actual Work Remaining Work Critical Remaining Work Baseline Milestone Milestone 	Hong Kong-Zhuhai-Macao Bridge Hong Kong Boundary Crossing Facilities - Automatic Vehicle Clearance Support System (AVCSS)	<table border="1" style="font-size: x-small;"> <tr> <th>Date</th> <th>Revision</th> <th>Checked</th> <th>Approved</th> </tr> <tr> <td>14-Nov-16</td> <td>Rev.: 0</td> <td>WC</td> <td>LC</td> </tr> <tr> <td>10-Mar-17</td> <td>Rev.: 1.0a</td> <td>WC</td> <td>LC</td> </tr> <tr> <td>5-May-17</td> <td>Rev.: 1.0b</td> <td>WC</td> <td>LC</td> </tr> </table>	Date	Revision	Checked	Approved	14-Nov-16	Rev.: 0	WC	LC	10-Mar-17	Rev.: 1.0a	WC	LC	5-May-17	Rev.: 1.0b	WC	LC
Date	Revision	Checked	Approved																
14-Nov-16	Rev.: 0	WC	LC																
10-Mar-17	Rev.: 1.0a	WC	LC																
5-May-17	Rev.: 1.0b	WC	LC																

Activity ID	Activity Name	2015			2016				2017				2018				2019			
		Q2	Q3	Q4	Q1	Q2	Q3	Q4	Q1	Q2	Q3	Q4	Q1	Q2	Q3	Q4	Q1	Q2	Q3	
Location 8(Inbd Private Car Annex (025)) (Phase 2)		▼ 30-Aug-17; Location 8(Inbd Private Car Annex (025)) (Phase 2)																		
EM3370	L8(025) - Cable Containment in Kiosks																			▼ 30-Aug-17; Location 8(Inbd Private Car Annex (025)) (Phase 2)
EM3380	L8(025) - Cable Laying and termination																			▼ 30-Aug-17; Location 8(Inbd Private Car Annex (025)) (Phase 2)
EM3400	L8(025) - Cable Splicing and Testing and Labeling																			▼ 30-Aug-17; Location 8(Inbd Private Car Annex (025)) (Phase 2)
Location 9(Outbd Private Car Annex (032)) (Phase 2)		▼ 30-Aug-17; Location 9(Outbd Private Car Annex (032)) (Phase 2)																		
EM3500	L9(032) - Cable Containment in Kiosks																			▼ 30-Aug-17; Location 9(Outbd Private Car Annex (032)) (Phase 2)
EM3520	L9(032) - Cable Laying and termination																			▼ 30-Aug-17; Location 9(Outbd Private Car Annex (032)) (Phase 2)
Initial On-Site Test and Commissioning / Pre-SAT (Phase 2 / Section II)																				
Site Acceptance Test (Phase 2 / Section II)																				
Operability Period Test (Phase 2 / Section II)																				
Completion (Phase 2 / Section II)																				
Engineering Support for Phase 2 / Section II																				
Procurement for Phase2 / Section III																				
Delivery and Bench Acceptance Test for Phase2 / Section III																				
Installation - Phase 2 / Section III																				
Location 10,11,12,13 (Vehicle Clearance Kiosks)		▼ 09-Oct-17; Installation - Phase 2/ Section III																		
Location 12 Inbd Private Car Kiosks (027) - 12 nos (Phase 2)		▼ 09-Oct-17; Location 10,11,12,13 (Vehicle Clearance Kiosks)																		
EM4440	L12(027)(12nos P2) - Cable Laying and termination																			▼ 09-Oct-17; Location 12 Inbd Private Car Kiosks
EM4460	L12(027)(12nos P2) - Cable Splicing and Testing and Labeling																			▼ 09-Oct-17; Location 12 Inbd Private Car Kiosks
EM4480	L12(027)(12nos P2) - AVCSS/DOH/MOM Kiosk Equipment Installation (12 nos)																			▼ 09-Oct-17; Location 12 Inbd Private Car Kiosks
Location 13 Outbd Private Car Kiosks (030) - 12 nos (Phase 2)		▼ 01-Sep-17; Location 13 Outbd Private Car Kiosks																		
EM4560	L13(030)(12nos P2) - Cable Containment in Kiosks																			▼ 01-Sep-17; Location 13 Outbd Private Car Kiosks
Location 12 Outbd Goods Vehicle Kiosks (029) - 3 nos (Phase 2)		▼ 31-Aug-17; Location 12 Outbd Goods Vehicle Kiosks																		
EM4880	L12(029)(3nos P2) - Cable Laying and termination																			▼ 31-Aug-17; Location 12 Outbd Goods Vehicle Kiosks
EM4900	L12(029)(3nos P2) - Cable Splicing and Testing and Labeling																			▼ 31-Aug-17; Location 12 Outbd Goods Vehicle Kiosks
EM4920	L12(029)(3nos P2) - AVCSS/DOH/MOM Kiosk Equipment Installation (3 nos)																			▼ 31-Aug-17; Location 12 Outbd Goods Vehicle Kiosks
EM4940	L12(029)(3nos P2) - ODB & XDB Installation (3 nos)																			▼ 31-Aug-17; Location 12 Outbd Goods Vehicle Kiosks
EM4960	L12(029)(3nos P2) - AIOP Installation (3 nos)																			▼ 31-Aug-17; Location 12 Outbd Goods Vehicle Kiosks
EM4980	L12(029)(3nos P2) - Loop Installation (15 nos)																			▼ 31-Aug-17; Location 12 Outbd Goods Vehicle Kiosks
Location 11 Outbd Coach Kiosks (009) - 4 nos (Phase 2)																				
Location 12 Inbd Goods Vehicle Kiosks (028) - 3 nos (Phase 2)		▼ 24-Aug-17; Location 12 Inbd Goods Vehicle Kiosks																		
EM4720	L12(028)(3nos P2) - Cable Laying and termination																			▼ 24-Aug-17; Location 12 Inbd Goods Vehicle Kiosks
EM4740	L12(028)(3nos P2) - Cable Splicing and Testing and Labeling																			▼ 24-Aug-17; Location 12 Inbd Goods Vehicle Kiosks
EM4760	L12(028)(3nos P2) - AVCSS/DOH/MOM Kiosk Equipment Installation (3 nos)																			▼ 24-Aug-17; Location 12 Inbd Goods Vehicle Kiosks
EM4780	L12(028)(3nos P2) - ODB & XDB Installation (3 nos)																			▼ 24-Aug-17; Location 12 Inbd Goods Vehicle Kiosks
EM4800	L12(028)(3nos P2) - AIOP Installation (3 nos)																			▼ 24-Aug-17; Location 12 Inbd Goods Vehicle Kiosks
EM4820	L12(028)(3nos P2) - Loop Installation (15 nos)																			▼ 24-Aug-17; Location 12 Inbd Goods Vehicle Kiosks
EM4840	L12(028)(3nos P2) - Kiosk Equipment Configuration (3 nos)																			▼ 24-Aug-17; Location 12 Inbd Goods Vehicle Kiosks
EM5120	L12(028)(3nos P2) - Inbd Goods Vehicle Kiosks Installation Complete																			▼ 24-Aug-17; Location 12 Inbd Goods Vehicle Kiosks
Location 10 Shuttle Bus Kiosks (006) - 4 nos (Phase 2)		▼ 30-Aug-17; Location 10 Shuttle Bus Kiosks (006) -																		
EM4000	L10(006)(4nos P2) - Cable Containment in Kiosks																			▼ 30-Aug-17; Location 10 Shuttle Bus Kiosks (006) -
Location 11 Inbd Coach Kiosks (010) - 2 nos (Phase 2)-1																				
Location 11 Inbd Coach Kiosks (010) - 2 nos (Phase 2)-2																				
Initial On-Site Test and Commissioning / Pre-SAT (Phase 2 / Section III)																				

Programme No.: HZMB-DWP Data Date: 14-Aug-15		Hong Kong-Zhuhai-Macao Bridge Hong Kong Boundary Crossing Facilities - Automatic Vehicle Clearance Support System (AVCSS)	Date	Revision	Checked	Approved
			14-Nov-16	Rev.: 0	WC	LC
			10-Mar-17	Rev.: 1.0a	WC	LC
			5-May-17	Rev.: 1.0b	WC	LC

Activity ID	Activity Name	2015			2016				2017				2018				2019			
		Q2	Q3	Q4	Q1	Q2	Q3	Q4	Q1	Q2	Q3	Q4	Q1	Q2	Q3	Q4	Q1	Q2	Q3	
	Site Acceptance Test (Phase 2 / Section III)																			
	Operability Period Test (Phase 2 / Section III)																			
	Completion (Phase 2 / Section III)																			
	Operation (Phase 2 / Section III)																			
	Defect Liability Period (DLP)																			
	Document Submission (Phase 2 / Section III)																			

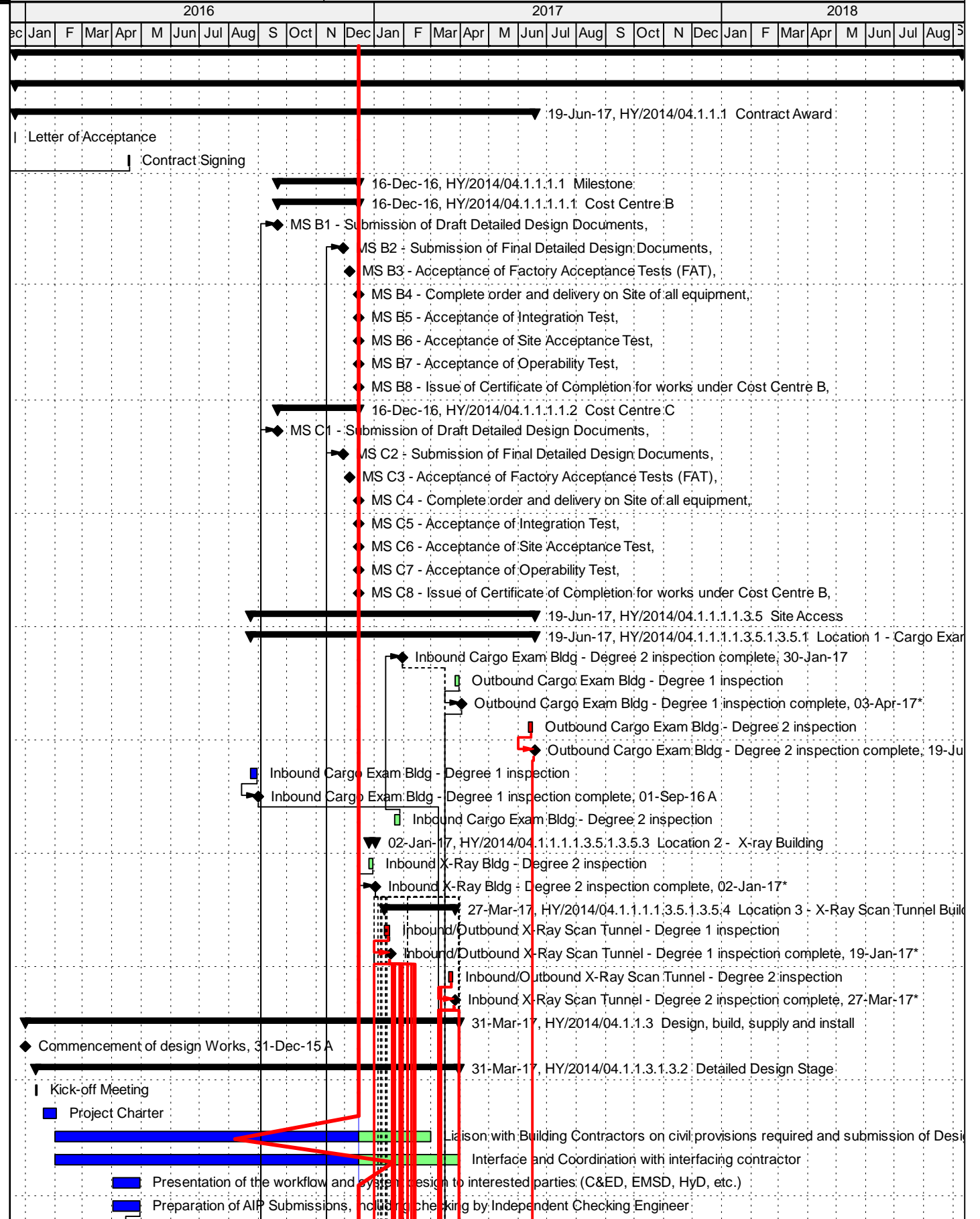
Programme No.: HZMB-DWP
Data Date: 14-Aug-15

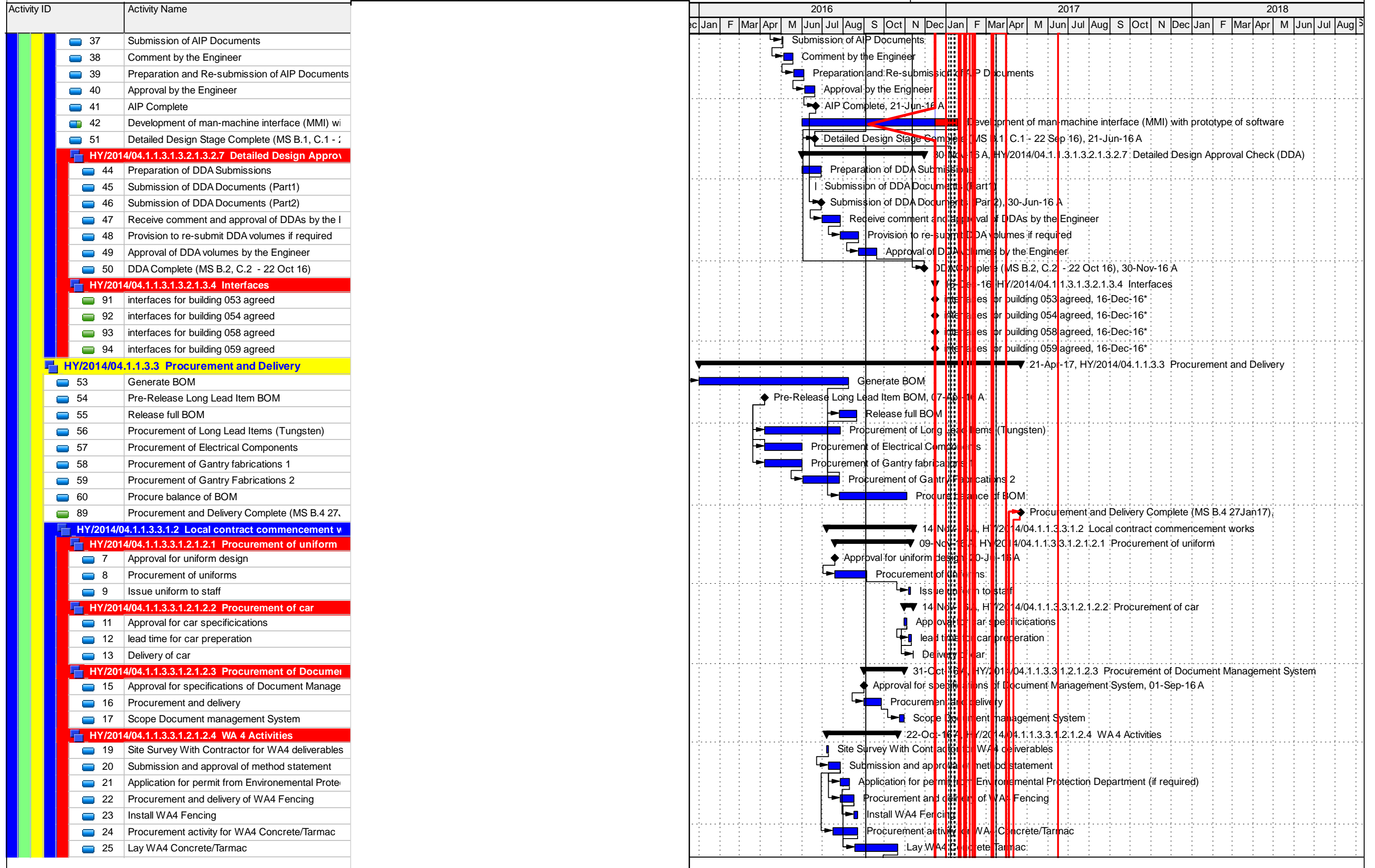
-  Actual Level of Effort
-  Primary Baseline
-  Actual Work
-  Remaining Work
-  Critical Remaining Work
-  Baseline Milestone
-  Milestone

Hong Kong-Zhuhai-Macao Bridge
Hong Kong Boundary Crossing
Facilities - Automatic Vehicle
Clearance Support System (AVCSS)

Date	Revision	Checked	Approved
14-Nov-16	Rev.: 0	WC	LC
10-Mar-17	Rev.: 1.0a	WC	LC
5-May-17	Rev.: 1.0b	WC	LC

Activity ID	Activity Name
HY/2014/04 Hong Kong-Zhuhai-Macao Bridge	
HY/2014/04.1 Contract No. HY/2014/04 Hong Kong-Zhuhai-Macao Bridge	
HY/2014/04.1.1.1 Contract Award	
3	Letter of Acceptance
4	Contract Signing
HY/2014/04.1.1.1.1 Milestone	
HY/2014/04.1.1.1.1.1 Cost Centre B	
A1C	MS B1 - Submission of Draft Detailed Design Documents
A1C	MS B2 - Submission of Final Detailed Design Documents
A1C	MS B3 - Acceptance of Factory Acceptance Tests (FAT)
A1C	MS B4 - Complete order and delivery on Site of all equipment
A1C	MS B5 - Acceptance of Integration Test
A1C	MS B6 - Acceptance of Site Acceptance Test
A1C	MS B7 - Acceptance of Operability Test
A1C	MS B8 - Issue of Certificate of Completion for works under Cost Centre B
HY/2014/04.1.1.1.1.2 Cost Centre C	
A1C	MS C1 - Submission of Draft Detailed Design Documents
A11	MS C2 - Submission of Final Detailed Design Documents
A11	MS C3 - Acceptance of Factory Acceptance Tests (FAT)
A11	MS C4 - Complete order and delivery on Site of all equipment
A11	MS C5 - Acceptance of Integration Test
A11	MS C6 - Acceptance of Site Acceptance Test
A11	MS C7 - Acceptance of Operability Test
A11	MS C8 - Issue of Certificate of Completion for works under Cost Centre C
HY/2014/04.1.1.1.3.5 Site Access	
HY/2014/04.1.1.1.3.5.1.3.5.1 Location 1 - Cargo Exam Bldg - Degree 1 inspection	
100	Inbound Cargo Exam Bldg - Degree 2 inspection
102	Outbound Cargo Exam Bldg - Degree 1 inspection
103	Outbound Cargo Exam Bldg - Degree 1 inspection
104	Outbound Cargo Exam Bldg - Degree 2 inspection
105	Outbound Cargo Exam Bldg - Degree 2 inspection
97	Inbound Cargo Exam Bldg - Degree 1 inspection
98	Inbound Cargo Exam Bldg - Degree 1 inspection
99	Inbound Cargo Exam Bldg - Degree 2 inspection
HY/2014/04.1.1.1.3.5.1.3.5.3 Location 2 - X-ray Building	
107	Inbound X-Ray Bldg - Degree 2 inspection
108	Inbound X-Ray Bldg - Degree 2 inspection complete
HY/2014/04.1.1.1.3.5.1.3.5.4 Location 3 - X-Ray Scan Tunnel Building	
110	Inbound/Outbound X-Ray Scan Tunnel - Degree 1 inspection
111	Inbound/Outbound X-Ray Scan Tunnel - Degree 1 inspection
112	Inbound/Outbound X-Ray Scan Tunnel - Degree 2 inspection
113	Inbound X-Ray Scan Tunnel - Degree 2 inspection
HY/2014/04.1.1.3 Design, build, supply and install	
28	Commencement of design Works
HY/2014/04.1.1.3.1.3.2 Detailed Design Stage	
30	Kick-off Meeting
31	Project Charter
32	Liaison with Building Contractors on civil provisions required and submission of Design
33	Interface and Coordination with interfacing contractor
35	Presentation of the workflow and system design to interested parties (C&ED, EMSD, HyD, etc.)
36	Preparation of AIP Submissions, including check





■ Actual Level of Effort
 ■ Remaining Work
 ◆ Milestone
 ■ Actual Work
 ■ Critical Remaining Work
 ▼ summary

Activity ID	Activity Name	2016												2017												2018											
		Dec	Jan	F	Mar	Apr	M	Jun	Jul	Aug	S	Oct	N	Dec	Jan	F	Mar	Apr	M	Jun	Jul	Aug	S	Oct	N	Dec	Jan	F	Mar	Apr	M	Jun	Jul	Aug	S	Oct	N
	X-ray System Image Analysis Workstation																																				
	Radiation shielding sliding door controller																																				
	CCTV System																																				
	Public Address System																																				
	UPS for workstations, equipment and system																																				
	HY/2014/04.1.1.3.7.1.3.7.2.1.3.7.2.2.1.3.7.2.2.4 Image Interpretation Workstation																																				
	Intercom System																																				
	Radiation Monitoring and Alarm System																																				
	X-ray System Image Analysis Workstation																																				
	Printer																																				
	UPS for workstations, equipment and system																																				
	HY/2014/04.1.1.3.7.1.3.7.2.1.3.7.2.2.1.3.7.2.2.5 X-ray Examination System																																				
	Server																																				
	Server rack																																				
	UPS for workstations, equipment and system																																				
	HY/2014/04.1.1.3.7.1.3.7.2.1.3.7.2.2.1.3.7.2.2.6 Driver's Waiting Room																																				
	CCTV System																																				
	Intercom System																																				
	Radiation Monitoring and Alarm System																																				
	Speaker																																				
	UPS for workstations, equipment and system																																				
	HY/2014/04.1.1.3.7.1.3.7.2.1.3.7.2.2.1.3.7.2.2.7 Training room																																				
	Projector screen (Screen size 106")																																				
	Ceiling mounted projector																																				
	X-ray System Training Workstation																																				
	Radiation Monitoring and Alarm System																																				
	UPS for workstations, equipment and system																																				
	Training aids																																				
	Printer																																				
	HY/2014/04.1.1.3.8 Section III - Cargo Examination Building																																				
322	Construction Works - Section III Complete																																				
	HY/2014/04.1.1.3.8.1.3.8.2 Outbound Cargo Examination Building																																				
320	Cabling and cable containment																																				
321	Installation of X-ray System Image Analysis Workstations, UPS for workstations, equipment and system																																				
	HY/2014/04.1.1.3.9 On-Site Testing & Commissioning																																				
335	Operability Test																																				
336	T&C Complete and Issurance of Certificate of Acceptance, 05-Sep-17																																				
345	Construction Works Complete, 05-Sep-17																																				
	HY/2014/04.1.1.3.9.1.3.10 Defect Liability Period for Construction Works																																				
359	Defect Liability Period																																				
360	Submission of Warranty Completion Test Plan																																				
361	Warranty Completion Test																																				
362	DLP Complete and issuance of Defect Liability Certificate																																				
363	Commencement of Maintenance Services																																				
	HY/2014/04.1.1.3.9.1.3.9.1 Integration Test																																				
325	Submission of Integration Test Plan																																				
326	Integration Test																																				
327	Preparation, submission and acceptance of Integration Test report																																				
327.5	Complete Inegration Test (MS B.5 - 3 Mar 17)																																				
	HY/2014/04.1.1.3.9.1.3.9.2 Site Acceptance Test																																				
329	Submission of SAT Plan																																				

█ Actual Level of Effort
 █ Remaining Work
 █ Critical Remaining Work
 ◆◆ Milestone
 ▼ summary

