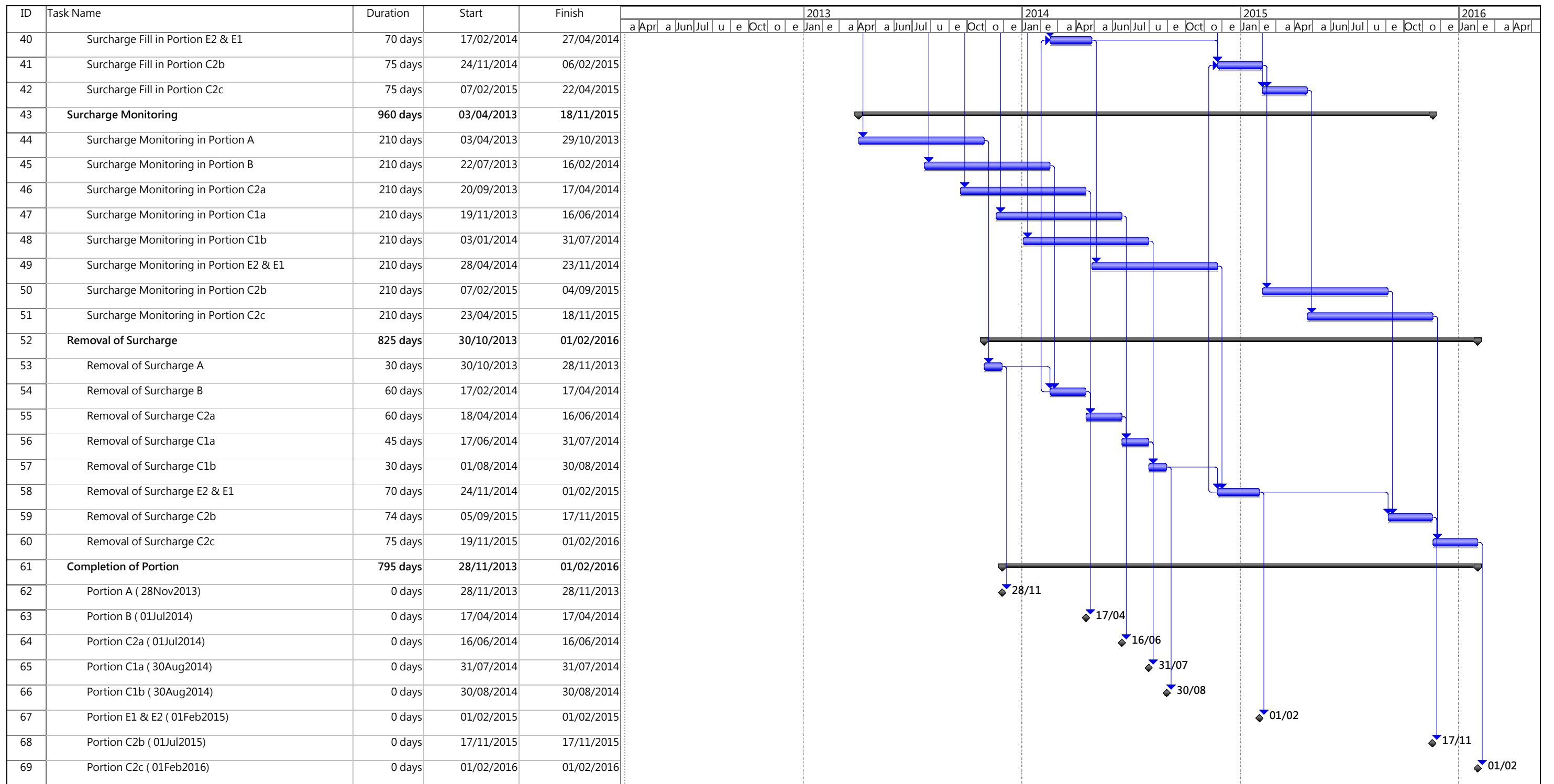


ID	Task Name	Duration	Start	Finish	2013					2014					2015					2016					
					a	Apr	a	Jun	Jul	u	e	Oct	o	e	Jan	e	a	Apr	a	Jun	Jul	u	e	Oct	o
1	Commencement of Cellular Walls at North Corner	1373 days	30/04/2012	01/02/2016																					
2	Construction of Cellular Walls	268 days	30/04/2012	22/01/2013																					
3	Cellular Walls from C040 to C001 40nrs	250 days	30/04/2012	04/01/2013																					
4	Cellular Walls from C041 to C080 40nrs	250 days	18/05/2012	22/01/2013																					
5	Cellular Walls from C113 to C134 22nrs	132 days	30/05/2012	08/10/2012																					
6	Cellular Walls from C112 to C096 16nrs	96 days	17/06/2012	20/09/2012																					
7	Cellular Walls from C081 to C089 9nrs	36 days	21/09/2012	26/10/2012																					
8	Construction of Cellular Walls at Marine access	60 days	20/09/2013	18/11/2013																					
9	Cellular Walls from C090 to C095 6nrs	60 days	20/09/2013	18/11/2013																					
10	Construction of Seawalls	258 days	09/06/2012	21/02/2013																					
11	Seawall in front of C040 to C001	240 days	09/06/2012	03/02/2013																					
12	Seawall in front of C041 to C080	240 days	27/06/2012	21/02/2013																					
13	Seawall in front of C113 to C134	132 days	09/07/2012	17/11/2012																					
14	Seawall in front of C112 to C096	96 days	27/07/2012	30/10/2012																					
15	Seawall in front of C081 to C089	36 days	31/10/2012	05/12/2012																					
16	Marine Fill upto +2.5mPD	516 days	19/10/2012	18/03/2014																					
17	Marine Fill in Portion C2a	60 days	19/10/2012	17/12/2012																					
18	Marine Fill in Portion A	30 days	18/12/2012	16/01/2013																					
19	Marine Fill in Portion C1a	60 days	24/03/2013	22/05/2013																					
20	Marine Fill in Portion B	90 days	24/12/2012	23/03/2013																					
21	Marine Fill in Portion E2 & E1	60 days	23/05/2013	21/07/2013																					
22	Marine Fill in Portion C1b	60 days	22/07/2013	19/09/2013																					
23	Marine Fill in Portion C2b	60 days	19/11/2013	17/01/2014																					
24	Marine Fill in Portion C2c	60 days	18/01/2014	18/03/2014																					
25	Earthwork Fill upto +5.5mPD	486 days	17/01/2013	17/05/2014																					
26	Earthwork Fill in Portion A	46 days	17/01/2013	03/03/2013																					
27	Earthwork Fill in Portion C2a	60 days	04/03/2013	02/05/2013																					
28	Earthwork Fill in Portion C1a	60 days	23/05/2013	21/07/2013																					
29	Earthwork Fill in Portion B	60 days	24/03/2013	22/05/2013																					
30	Earthwork Fill in Portion E2 & E1	60 days	22/07/2013	19/09/2013																					
31	Earthwork Fill in Portion C1b	60 days	20/09/2013	18/11/2013																					
32	Earthwork Fill in Portion C2b	60 days	18/01/2014	18/03/2014																					
33	Earthwork Fill in Portion C2c	60 days	19/03/2014	17/05/2014																					
34	Surcharge Fill upto +11.5mPD	780 days	04/03/2013	22/04/2015																					
35	Surcharge Fill in Portion A	30 days	04/03/2013	02/04/2013																					
36	Surcharge Fill in Portion B	60 days	23/05/2013	21/07/2013																					
37	Surcharge Fill in Portion C2a	60 days	22/07/2013	19/09/2013																					
38	Surcharge Fill in Portion C1a	60 days	20/09/2013	18/11/2013																					
39	Surcharge Fill in Portion C1b	45 days	19/11/2013	02/01/2014																					

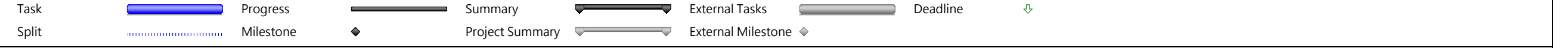
Project: For EP
Date: 07/03/2012

Task Progress Summary External Tasks Deadline

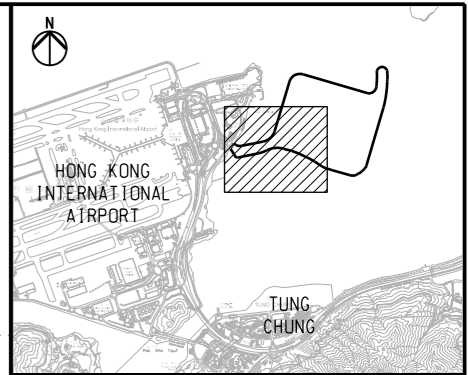
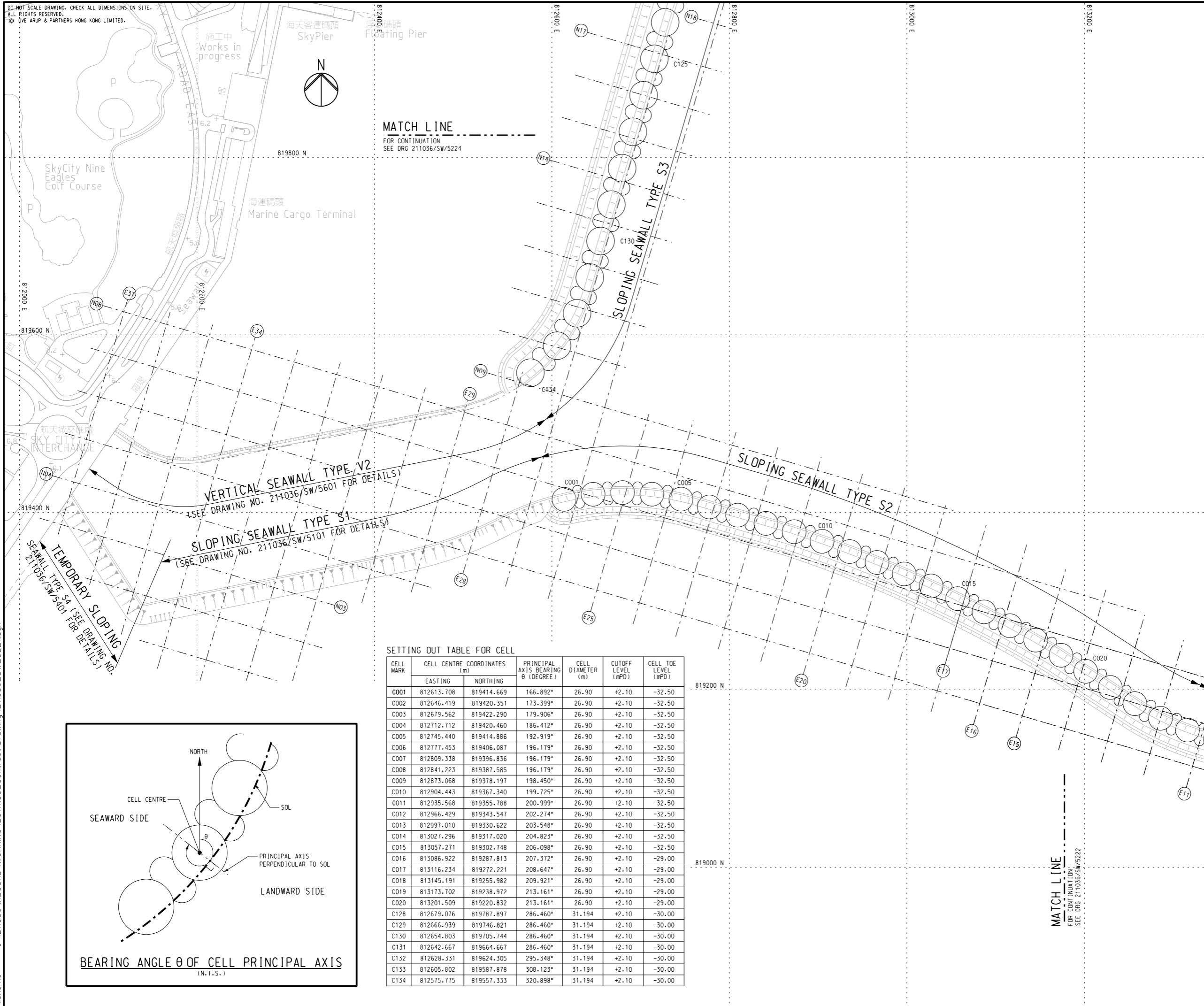
Split Milestone Project Summary External Milestone



Project: For EP
Date: 07/03/2012



DO NOT SCALE DRAWING. CHECK ALL DIMENSIONS ON SITE.
ALL RIGHTS RESERVED.
© OVE ARUP & PARTNERS HONG KONG LIMITED.



KEY PLAN

NOTES

1. ALL DIMENSIONS ARE IN MILLIMETRES UNLESS SHOWN OTHERWISE.
2. ALL LEVELS ARE IN METRES ABOVE HONG KONG PRINCIPAL DATUM (mPD).
3. ALL COORDINATES ARE RELATED TO HONG KONG 1980 GRID.
4. FOR TYPICAL ARRANGEMENT OF CELLS AND CONNECTING ARCS REFER TO DRG NO. 211036/SW/5261 AND 5262.
5. FOR DETAILS OF SLOPING SEAWALL IN FRONT OF CELLULAR STRUCTURES REFER TO DRG NO. 211036/SW/5201 TO 5206 AND 5231 TO 5233.

LEGEND

- SETTING OUT LINE (SOL)
REFER TO DRG NO. 211036/SL/1002
- ○ ○ ○ PROPOSED CELLULAR STRUCTURE
- CELL MARK
- 1+000 CHAINAGE IN METRES ALONG SOL
- GRID LINE

Rev	Description	By	Date
-	FOR CONSTRUCTION	TL	11/11

Consultant
ARUP 奧雅納工程顧問
Ove Arup & Partners Hong Kong Limited

Supported By :

- Ecosystems Ltd. ○
- EDA Marine Ltd. ○
- Geotechnical Consulting Group (Asia) Ltd. ○
- Hong Kong Cetacean Research Project ○
- IntelBuild Technyx Asia Limited ○
- Tony Gee and Partners LLP ○

Contract No. and Title:
Contract No. HY/2010/02
Hong Kong-Zhuhai-Macao Bridge
Hong Kong Boundary Crossing Facilities
- Reclamation Works

Drawing title
**SEAWALLS S2, S3 AND V1
CELLULAR STRUCTURE
SETTING OUT PLAN**

(SHEET 1 OF 4)

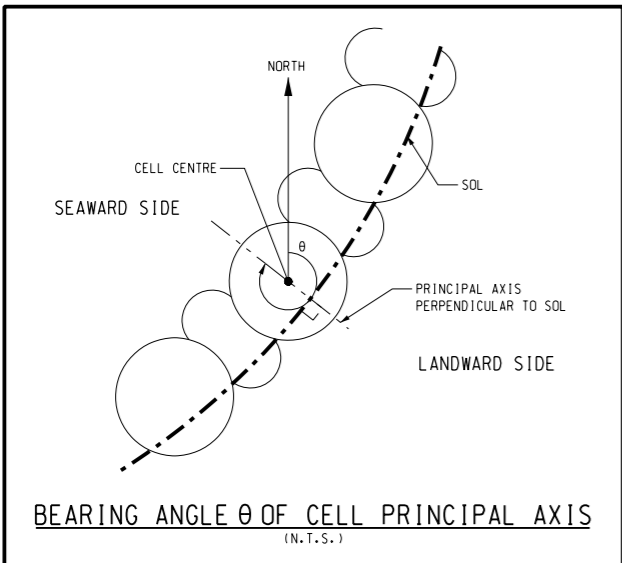
Drawing no. 211036/SW/5221		Rev. -	
Drawn RL	Date 06/10	Checked KKY	Approved DML
Scale 1:2000 @A1 1:4000 @A3		Status WORKING	

COPYRIGHT RESERVED

路政署 HIGHWAYS DEPARTMENT
港珠澳大橋香港工程管理局
Hong Kong - Zhuhai - Macao Bridge
Hong Kong Project Management Office

SETTING OUT TABLE FOR CELL

CELL MARK	CELL CENTRE COORDINATES (m)		PRINCIPAL AXIS BEARING θ (DEGREE)	CELL DIAMETER (m)	CUTOFF LEVEL (mPD)	CELL TOE LEVEL (mPD)
	EASTING	NORTHING				
C001	812613.708	819414.669	166.892°	26.90	+2.10	-32.50
C002	812646.419	819420.351	173.399°	26.90	+2.10	-32.50
C003	812679.562	819422.290	179.906°	26.90	+2.10	-32.50
C004	812712.712	819420.460	186.412°	26.90	+2.10	-32.50
C005	812745.440	819414.886	192.919°	26.90	+2.10	-32.50
C006	812777.453	819406.087	196.179°	26.90	+2.10	-32.50
C007	812809.338	819396.836	196.179°	26.90	+2.10	-32.50
C008	812841.223	819387.585	196.179°	26.90	+2.10	-32.50
C009	812873.068	819378.197	198.450°	26.90	+2.10	-32.50
C010	812904.443	819367.340	199.725°	26.90	+2.10	-32.50
C011	812935.568	819355.788	200.999°	26.90	+2.10	-32.50
C012	812966.429	819343.547	202.274°	26.90	+2.10	-32.50
C013	812997.010	819330.622	203.548°	26.90	+2.10	-32.50
C014	813027.296	819317.020	204.823°	26.90	+2.10	-32.50
C015	813057.271	819302.748	206.098°	26.90	+2.10	-32.50
C016	813086.922	819287.813	207.372°	26.90	+2.10	-29.00
C017	813116.234	819272.221	208.647°	26.90	+2.10	-29.00
C018	813145.191	819255.982	209.921°	26.90	+2.10	-29.00
C019	813173.702	819238.972	213.161°	26.90	+2.10	-29.00
C020	813201.509	819220.832	213.161°	26.90	+2.10	-29.00
C128	812679.076	819787.897	286.460°	31.194	+2.10	-30.00
C129	812666.939	819746.821	286.460°	31.194	+2.10	-30.00
C130	812654.803	819705.744	286.460°	31.194	+2.10	-30.00
C131	812642.667	819664.667	286.460°	31.194	+2.10	-30.00
C132	812628.331	819624.305	295.348°	31.194	+2.10	-30.00
C133	812605.802	819587.878	308.123°	31.194	+2.10	-30.00
C134	812575.775	819557.333	320.898°	31.194	+2.10	-30.00

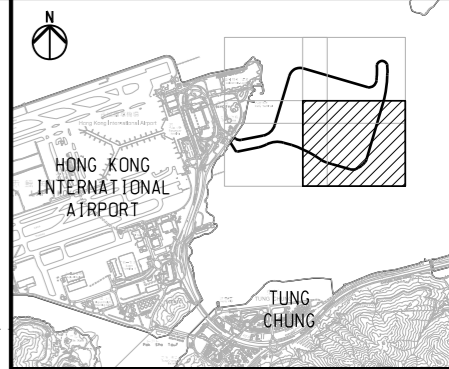


Printed by : 12/17/2011
Filename : J:\211036\RECORD\WORKING\20111130_Contract Drawing_211036_SW_5221.dgn

DO NOT SCALE DRAWING. CHECK ALL DIMENSIONS ON SITE.
ALL RIGHTS RESERVED.
© OVE ARUP & PARTNERS HONG KONG LIMITED.

SETTING OUT TABLE FOR CELL

CELL MARK	CELL CENTRE COORDINATES (m)		PRINCIPAL AXIS BEARING θ (DEGREE)	CELL DIAMETER (m)	CUTOFF LEVEL (mPD)	CELL TOE LEVEL (mPD)
	EASTING	NORTHING				
C021	813229.266	819202.618	213.161*	26.90	+2.10	-25.00
C022	813257.010	819184.384	213.161*	26.90	+2.10	-25.00
C023	813285.845	819167.927	206.621*	26.90	+2.10	-25.00
C024	813316.285	819154.674	200.432*	26.90	+2.10	-25.00
C025	813347.890	819144.503	196.459*	26.90	+2.10	-25.00
C026	813379.730	819135.097	196.459*	26.90	+2.10	-25.00
C027	813411.569	819125.690	196.459*	26.90	+2.10	-25.00
C028	813443.409	819116.284	196.459*	26.90	+2.10	-25.00
C029	813475.248	819106.877	196.459*	26.90	+2.10	-25.00
C030	813507.088	819097.470	196.459*	26.90	+2.10	-25.00
C031	813538.927	819088.064	196.459*	26.90	+2.10	-25.00
C032	813570.767	819078.657	196.459*	26.90	+2.10	-25.00
C033	813602.623	819069.308	196.459*	26.90	+2.10	-25.00
C034	813634.497	819060.018	198.941*	26.90	+2.10	-25.00
C035	813667.035	819053.421	183.979*	26.90	+2.10	-25.00
C036	813700.173	819055.449	169.017*	26.90	+2.10	-25.00
C037	813731.316	819066.953	151.744*	26.90	+2.10	-25.00
C038	813760.560	819082.670	150.248*	26.90	+2.10	-25.00
C039	813788.575	819100.486	145.279*	26.90	+2.10	-25.00
C040	813814.826	819120.812	138.867*	26.90	+2.10	-25.00
C041	813838.209	819144.380	130.200*	26.90	+2.10	-25.00
C042	813857.241	819171.584	119.179*	26.90	+2.10	-25.00
C043	813869.897	819202.277	106.458*	26.90	+2.10	-25.00
C044	813879.303	819234.116	106.458*	26.90	+2.10	-25.00
C045	813888.709	819265.956	106.458*	26.90	+2.10	-25.00
C046	813898.115	819297.796	106.458*	26.90	+2.10	-25.00
C047	813907.521	819329.636	106.458*	26.90	+2.10	-25.00
C048	813916.927	819361.475	106.458*	26.90	+2.10	-25.00
C049	813926.333	819393.315	106.458*	26.90	+2.10	-25.00
C050	813935.739	819425.155	106.458*	26.90	+2.10	-25.00
C051	813945.145	819456.994	106.458*	26.90	+2.10	-25.00
C052	813954.551	819488.834	106.458*	26.90	+2.10	-25.00
C053	813963.957	819520.674	106.458*	26.90	+2.10	-25.00
C054	813973.363	819552.514	106.458*	26.90	+2.10	-25.00
C055	813982.769	819584.353	106.458*	26.90	+2.10	-25.00
C056	813992.175	819616.193	106.458*	26.90	+2.10	-25.00
C057	814003.525	819654.613	106.458*	31.194	+2.10	-29.00
C058	814015.660	819695.690	106.458*	31.194	+2.10	-29.00
C059	814027.795	819736.767	106.458*	31.194	+2.10	-29.00
C060	814039.930	819777.844	106.458*	31.194	+2.10	-29.00



KEY PLAN

NOTES

- FOR GENERAL NOTES AND LEGEND REFER TO DRG NO. 211036/SW/5221.
- THE POSITION OF TUNG CHUNG NAVIGATIONAL CHANNEL IS BASED ON HONG KONG ELECTRONIC NAVIGATIONAL CHART (ENC) ISSUED BY HYDROGRAPHIC OFFICE OF THE MARINE DEPARTMENT, HKSAR.

Rev	Description	By	Date
-	FOR CONSTRUCTION	TL	11/11

Consultant

ARUP 奧雅納工程顧問

Supported By :

- Ecosystems Ltd.
- EDA Marine Ltd.
- Geotechnical Consulting Group (Asia) Ltd.
- Hong Kong Cetacean Research Project
- IntelBuild Technyx Asia Limited
- Tony Gee and Partners LLP

Contract No. and Title:
Contract No. HY/2010/02
Hong Kong-Zhuhai-Macao Bridge
Hong Kong Boundary Crossing Facilities
- Reclamation Works

Drawing title
SEAWALLS S2, S3 AND V1
CELLULAR STRUCTURE
SETTING OUT PLAN

(SHEET 2 OF 4)

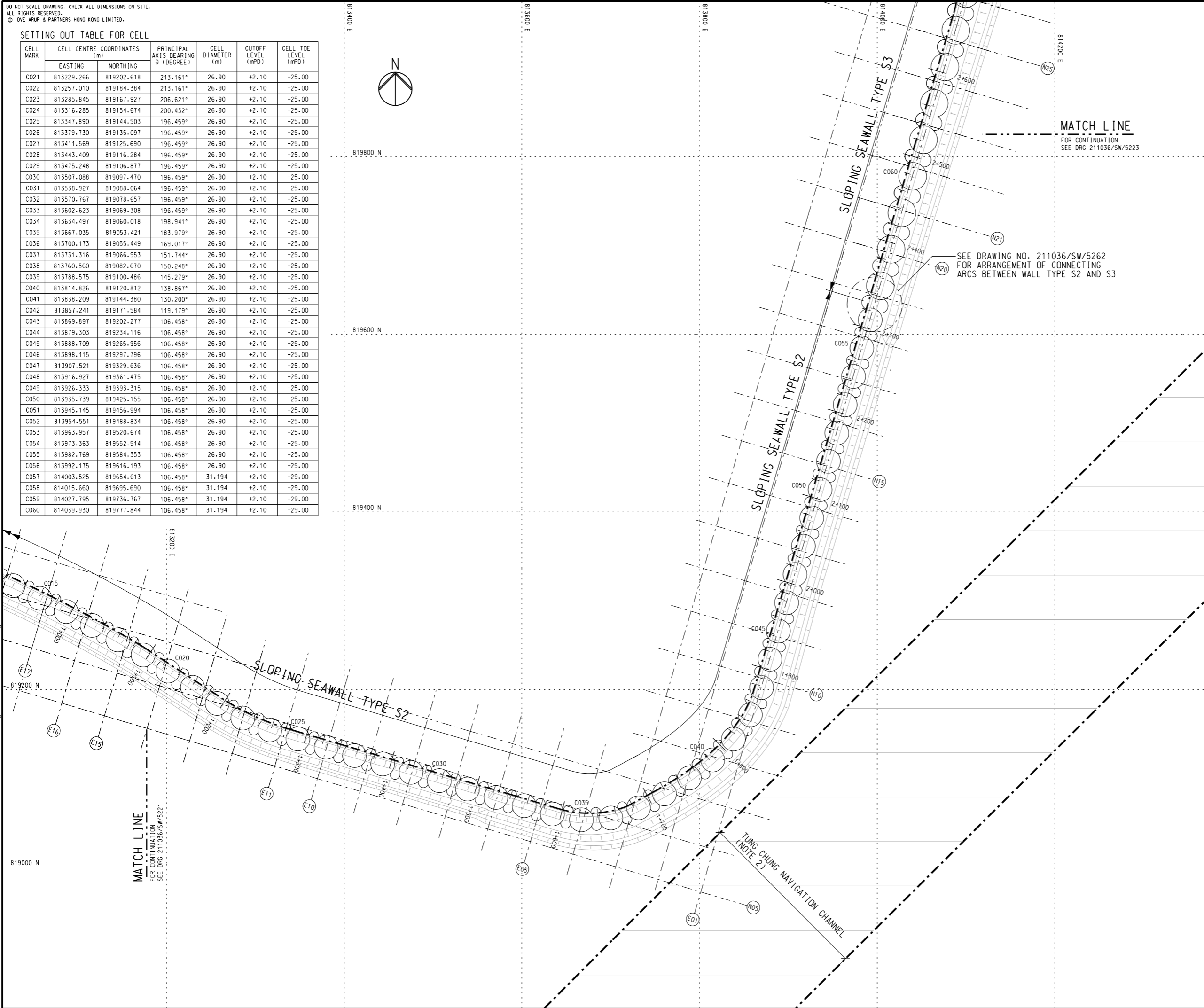
Drawing no. 211036/SW/5222		Rev. -	
Drawn RL	Date 06/10	Checked KKY	Approved DML
Scale 1:2000 @A1 1:4000 @A3		Status	WORKING

COPYRIGHT RESERVED

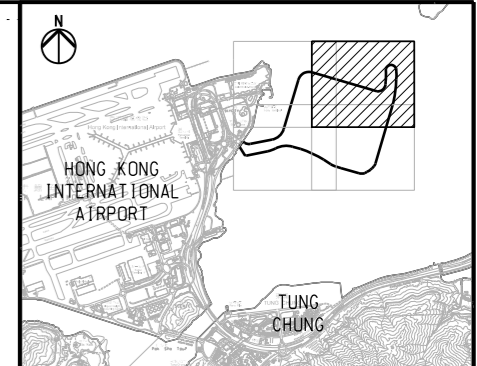
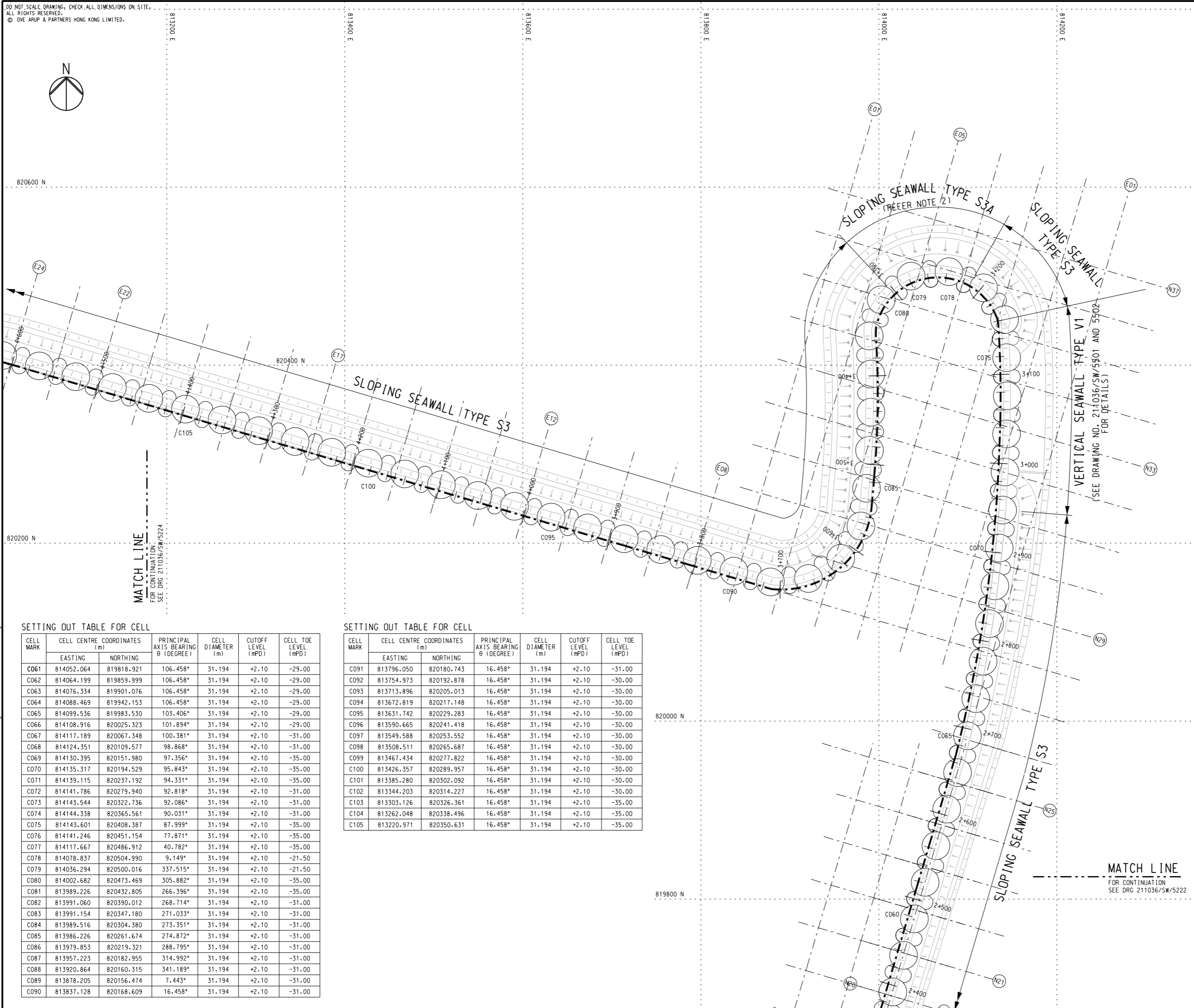


路政署
HIGHWAYS DEPARTMENT
 港珠澳大橋香港工程管理局
 Hong Kong - Zhuhai - Macao Bridge
 Hong Kong Project Management Office

Printed by : 12/17/2011
 Filename : J:\211036\RECORD\WORKING\20111130_Contract Drawing_211036_SW_5222.dgn



DO NOT SCALE DRAWING. CHECK ALL DIMENSIONS ON SITE.
ALL RIGHTS RESERVED.
© OVE ARUP & PARTNERS HONG KONG LIMITED.



KEY PLAN

- NOTES**
- FOR GENERAL NOTES AND LEGEND REFER TO DRG NO. 211036/SW/5221.
 - CELLS AND CONNECTING ARCS OF C078 AND C079 ARE ABOVE FUTURE TUEN MUN CHEK LAP KOK LINK TUNNELS. TOP LEVELS OF CELLS AND CONNECTING ARCS NOT LOWER THAN LEVELS SHOWN ON THIS DRAWING.

MATCH LINE
FOR CONTINUATION
SEE DRG 211036/SW/5224

MATCH LINE
FOR CONTINUATION
SEE DRG 211036/SW/5222

SETTING OUT TABLE FOR CELL

CELL MARK	CELL CENTRE COORDINATES (m)		PRINCIPAL AXIS BEARING θ (DEGREE)	CELL DIAMETER (m)	CUTOFF LEVEL (mPD)	CELL TOE LEVEL (mPD)
	EASTING	NORTHING				
C061	814052.064	819818.921	106.458*	31.194	+2.10	-29.00
C062	814064.199	819859.999	106.458*	31.194	+2.10	-29.00
C063	814076.334	819901.076	106.458*	31.194	+2.10	-29.00
C064	814088.469	819942.153	106.458*	31.194	+2.10	-29.00
C065	814099.536	819983.530	103.406*	31.194	+2.10	-29.00
C066	814108.916	820025.323	101.894*	31.194	+2.10	-29.00
C067	814117.189	820067.348	100.381*	31.194	+2.10	-31.00
C068	814124.351	820109.577	98.868*	31.194	+2.10	-31.00
C069	814130.395	820151.980	97.356*	31.194	+2.10	-35.00
C070	814135.317	820194.529	95.843*	31.194	+2.10	-35.00
C071	814139.115	820237.192	94.331*	31.194	+2.10	-35.00
C072	814141.786	820279.940	92.818*	31.194	+2.10	-31.00
C073	814143.544	820322.736	92.086*	31.194	+2.10	-31.00
C074	814144.338	820365.561	90.031*	31.194	+2.10	-31.00
C075	814143.601	820408.387	87.999*	31.194	+2.10	-35.00
C076	814141.246	820451.154	77.871*	31.194	+2.10	-35.00
C077	814117.667	820486.912	40.782*	31.194	+2.10	-35.00
C078	814078.837	820504.990	9.149*	31.194	+2.10	-21.50
C079	814036.294	820500.016	337.515*	31.194	+2.10	-21.50
C080	814002.682	820473.469	305.882*	31.194	+2.10	-35.00
C081	813989.226	820432.805	266.396*	31.194	+2.10	-35.00
C082	813991.060	820390.012	268.714*	31.194	+2.10	-31.00
C083	813991.154	820347.180	271.033*	31.194	+2.10	-31.00
C084	813989.516	820304.380	273.351*	31.194	+2.10	-31.00
C085	813986.226	820261.674	274.872*	31.194	+2.10	-31.00
C086	813979.853	820219.321	288.795*	31.194	+2.10	-31.00
C087	813957.223	820182.955	314.992*	31.194	+2.10	-31.00
C088	813920.864	820160.315	341.189*	31.194	+2.10	-31.00
C089	813878.205	820156.474	7.443*	31.194	+2.10	-31.00
C090	813837.128	820168.609	16.458*	31.194	+2.10	-31.00

SETTING OUT TABLE FOR CELL

CELL MARK	CELL CENTRE COORDINATES (m)		PRINCIPAL AXIS BEARING θ (DEGREE)	CELL DIAMETER (m)	CUTOFF LEVEL (mPD)	CELL TOE LEVEL (mPD)
	EASTING	NORTHING				
C091	813796.050	820180.743	16.458*	31.194	+2.10	-31.00
C092	813754.973	820192.878	16.458*	31.194	+2.10	-30.00
C093	813713.896	820205.013	16.458*	31.194	+2.10	-30.00
C094	813672.819	820217.148	16.458*	31.194	+2.10	-30.00
C095	813631.742	820229.283	16.458*	31.194	+2.10	-30.00
C096	813590.665	820241.418	16.458*	31.194	+2.10	-30.00
C097	813549.588	820253.552	16.458*	31.194	+2.10	-30.00
C098	813508.511	820265.687	16.458*	31.194	+2.10	-30.00
C099	813467.434	820277.822	16.458*	31.194	+2.10	-30.00
C100	813426.357	820289.957	16.458*	31.194	+2.10	-30.00
C101	813385.280	820302.092	16.458*	31.194	+2.10	-30.00
C102	813344.203	820314.227	16.458*	31.194	+2.10	-30.00
C103	813303.126	820326.361	16.458*	31.194	+2.10	-35.00
C104	813262.048	820338.496	16.458*	31.194	+2.10	-35.00
C105	813220.971	820350.631	16.458*	31.194	+2.10	-35.00

FOR CONSTRUCTION		TL	11/11
Rev	Description	By	Date
Consultant			
ARUP 奧雅納工程顧問		•	
Supported By :			
Ecosystems Ltd.		○	
EDA Marine Ltd.		○	
Geotechnical Consulting Group (Asia) Ltd.		○	
Hong Kong Cetacean Research Project		○	
IntelBuild Technyx Asia Limited		○	
Tony Gee and Partners LLP		○	
Contract No. and Title:			
Contract No. HY/2010/02			
Hong Kong-Zhuhai-Macao Bridge			
Hong Kong Boundary Crossing Facilities			
- Reclamation Works			
Drawing title			
SEAWALLS S2, S3 AND V1			
CELLULAR STRUCTURE			
SETTING OUT PLAN			
(SHEET 3 OF 4)			
Drawing no.		Rev.	
211036/SW/5223		-	
Drawn	Date	Checked	Approved
RL	06/10	KKY	DML
Scale	Status		
1:2000 @A1 1:4000 @A3	WORKING		
COPYRIGHT RESERVED			

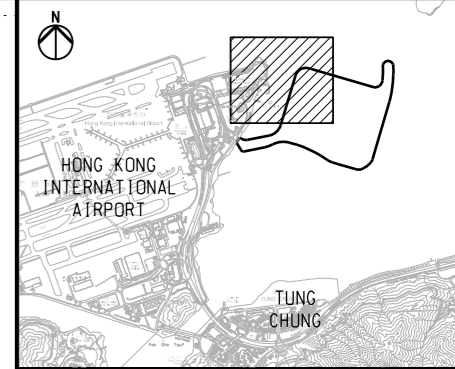


Printed by : 12/17/2011
Filename : J:\211036\RECORD\WORKING\20111130_Contract_Drawing_211036_SW_5223.dgn

DO NOT SCALE DRAWING. CHECK ALL DIMENSIONS ON SITE.
ALL RIGHTS RESERVED.
© OVE ARUP & PARTNERS HONG KONG LIMITED.



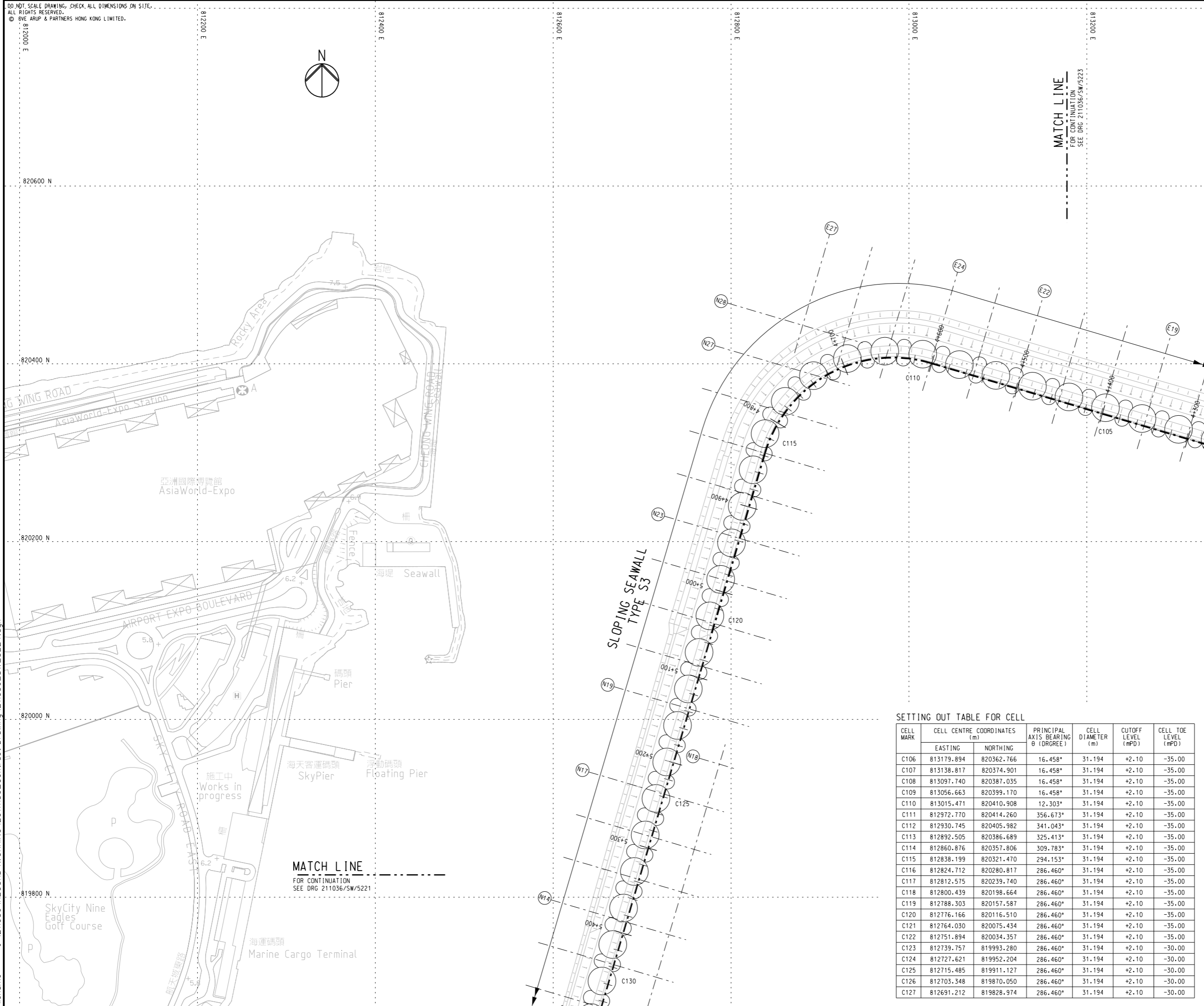
MATCH LINE
FOR CONTINUATION
SEE DRG 211036/SW/5223



KEY PLAN

NOTE

- FOR GENERAL NOTES AND LEGEND REFER TO DRG NO. 211036/SW/5221.



SETTING OUT TABLE FOR CELL

CELL MARK	CELL CENTRE COORDINATES (m)		PRINCIPAL AXIS BEARING θ (DEGREE)	CELL DIAMETER (m)	CUTOFF LEVEL (mPD)	CELL TOE LEVEL (mPD)
	EASTING	NORTHING				
C106	813179.894	820362.766	16.458°	31.194	+2.10	-35.00
C107	813138.817	820374.901	16.458°	31.194	+2.10	-35.00
C108	813097.740	820387.035	16.458°	31.194	+2.10	-35.00
C109	813056.663	820399.170	16.458°	31.194	+2.10	-35.00
C110	813015.471	820410.908	12.303°	31.194	+2.10	-35.00
C111	812972.770	820414.260	356.673°	31.194	+2.10	-35.00
C112	812930.745	820405.982	341.043°	31.194	+2.10	-35.00
C113	812892.505	820386.689	325.413°	31.194	+2.10	-35.00
C114	812860.876	820357.806	309.783°	31.194	+2.10	-35.00
C115	812838.199	820321.470	294.153°	31.194	+2.10	-35.00
C116	812824.712	820280.817	286.460°	31.194	+2.10	-35.00
C117	812812.575	820239.740	286.460°	31.194	+2.10	-35.00
C118	812800.439	820198.664	286.460°	31.194	+2.10	-35.00
C119	812788.303	820157.587	286.460°	31.194	+2.10	-35.00
C120	812776.166	820116.510	286.460°	31.194	+2.10	-35.00
C121	812764.030	820075.434	286.460°	31.194	+2.10	-35.00
C122	812751.894	820034.357	286.460°	31.194	+2.10	-35.00
C123	812739.757	819993.280	286.460°	31.194	+2.10	-30.00
C124	812727.621	819952.204	286.460°	31.194	+2.10	-30.00
C125	812715.485	819911.127	286.460°	31.194	+2.10	-30.00
C126	812703.348	819870.050	286.460°	31.194	+2.10	-30.00
C127	812691.212	819828.974	286.460°	31.194	+2.10	-30.00

Rev	Description	By	Date
-	FOR CONSTRUCTION	TL	11/11

Consultant

ARUP 奧雅納工程顧問 •
Ove Arup & Partners Hong Kong Limited

Supported By :

- Ecosystems Ltd. ○
- EDA Marine Ltd. ○
- Geotechnical Consulting Group (Asia) Ltd. ○
- Hong Kong Cetacean Research Project ○
- IntelliBuild Technyx Asia Limited ○
- Tony Gee and Partners LLP ○

Contract No. and Title:
Contract No. HY/2010/02
Hong Kong-Zhuhai-Macao Bridge
Hong Kong Boundary Crossing Facilities
- Reclamation Works

Drawing title
SEAWALLS S2, S3 AND V1
CELLULAR STRUCTURE
SETTING OUT PLAN

(SHEET 4 OF 4)

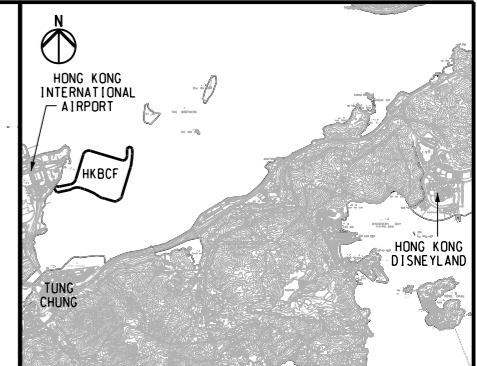
Drawing no. 211036/SW/5224		Rev. -	
Drawn RL	Date 06/10	Checked KKY	Approved DML
Scale 1:2000 @A1 1:4000 @A3		Status	WORKING

COPYRIGHT RESERVED

路政署 HIGHWAYS DEPARTMENT
港珠澳大橋香港工程管理處
Hong Kong - Zhuhai - Macao Bridge
Hong Kong Project Management Office

Printed by : 12/17/2011
Filename : J:\211036\RECORD\WORKING\20111130_Contract Drawing\211036_SW_5224.dgn

DO NOT SCALE DRAWING. CHECK ALL DIMENSIONS ON SITE.
ALL RIGHTS RESERVED.
© OVE ARUP & PARTNERS HONG KONG LIMITED.



KEY PLAN

- NOTES**
- FOR LEGENDS AND NOTES FOR CHAIN LINK FENCE AND GATE REFER TO DRG NO. 211036/SL/1013.
 - THE ERECTION OF CHAIN LINK FENCE AND GATES SHALL BE COMPLETED BY THE HANDOVER DATE OF EACH PORTION OF SITE, OR AS INSTRUCTED BY THE ENGINEER.
 - FOR SETTING OUT COORDINATES OF DIFFERENT PORTIONS OF SITE REFER TO DRG NO. 211036/SL/1003.
 - ACCESS POINTS BETWEEN PORTIONS SHALL BE PROVIDED BY THE CONTRACTOR, AND THE LOCATIONS SHALL BE AGREED WITH THE ENGINEER ON SITE.
 - FOR HOARDING AND FENCE AT FILL BANK AT TSEUNG KWAN O AREA 137 REFER TO DRG NO. 211036/SL/1015.

LEGEND

	SETTING OUT LINE (SOL)
	WORKS AREA BOUNDARY
	PORTIONS BOUNDARY LINE

Rev	Description	By	Date
-	FOR CONSTRUCTION	HYJL	11/11

Consultant

ARUP	奧雅納工程顧問	•
Ove Arup & Partners Hong Kong Limited		
Supported By :	Ecosystems Ltd.	○
	EDA Marine Ltd.	○
	Geotechnical Consulting Group (Asia) Ltd.	○
	Hong Kong Cetacean Research Project	○
	Intel:Build Technyx Asia Limited	○
	Tony Gee and Partners LLP	○

Contract No. and Title:
Contract No. HY/2010/02
Hong Kong-Zhuhai-Macao Bridge
Hong Kong Boundary Crossing Facilities
- Reclamation Works

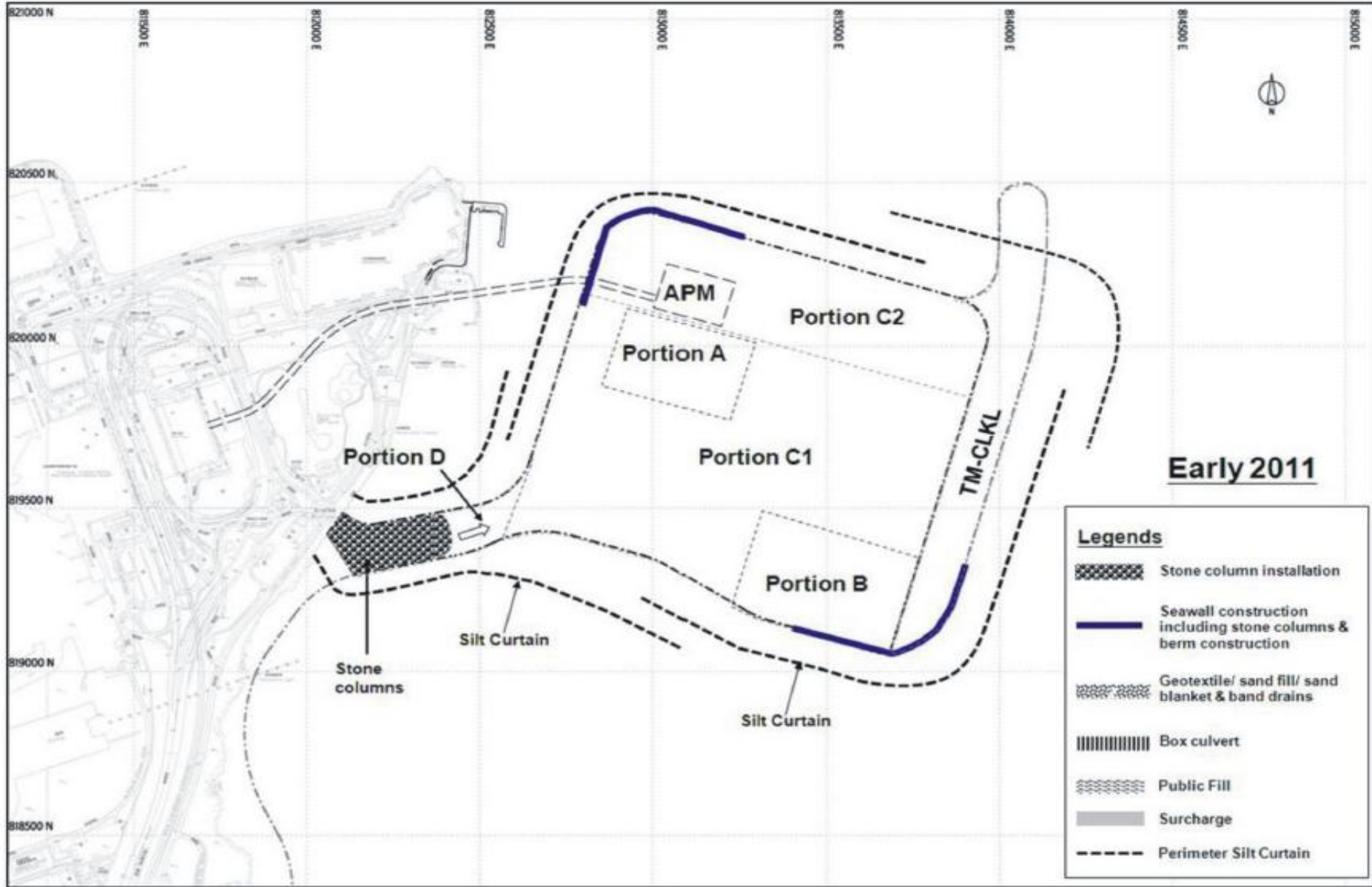
Drawing title
WORKS AREA LAYOUT
AND HOARDING PLAN
(SHEET 2 OF 3)

Drawing no. 211036/SL/1014		Rev. -	
Drawn RL	Date 06/10	Checked KKY	Approved DML
Scale 1:5000 @A1 1:10000 @A3		Status WORKING	

COPYRIGHT RESERVED

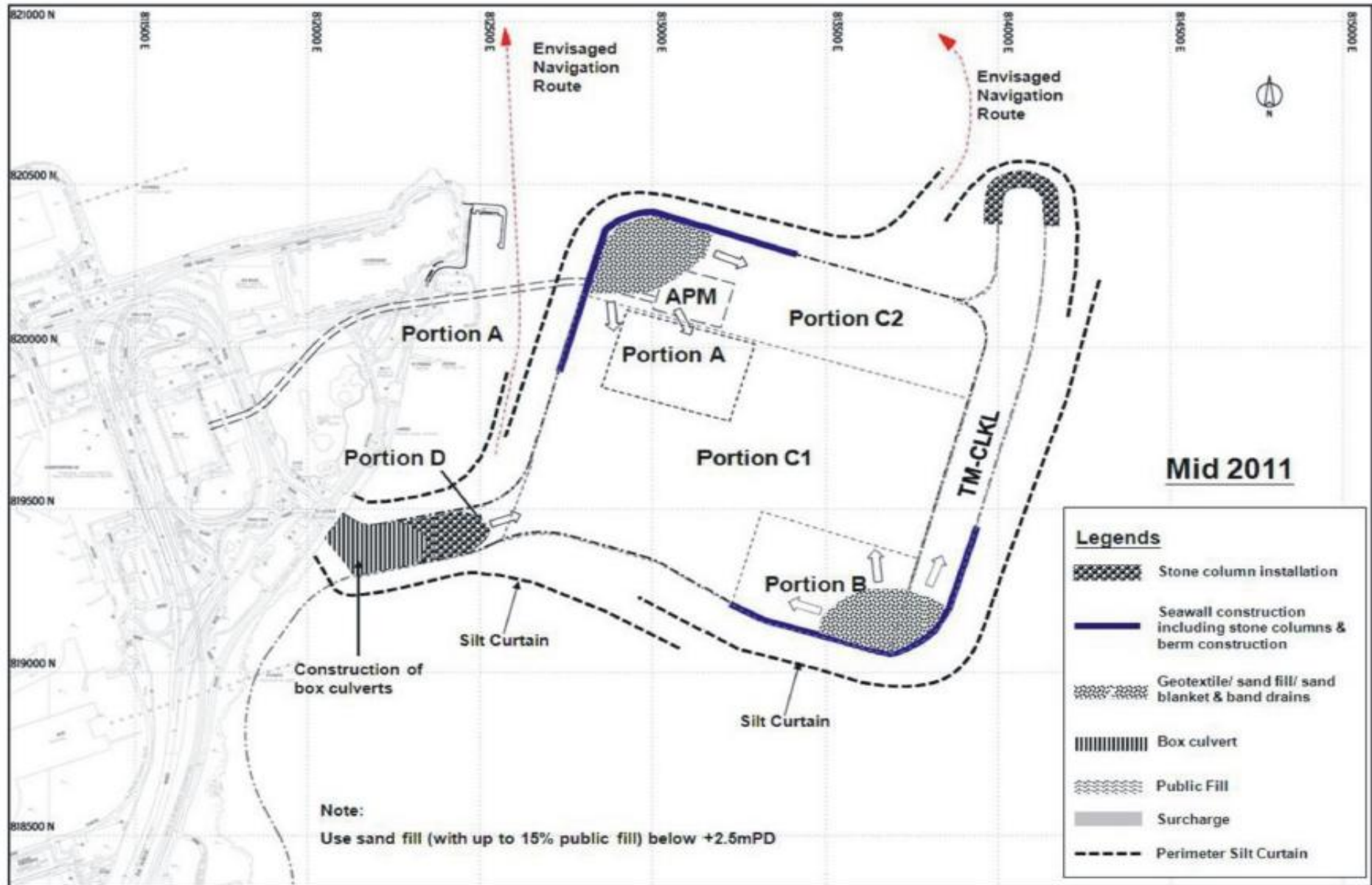
路政署
HIGHWAYS DEPARTMENT
 港珠澳大橋香港工程管理局
 Hong Kong - Zhuhai - Macao Bridge
 Hong Kong Project Management Office

Printed by : 12/17/2011
 Filename : J:\211036\RECORD\WORKING\20111130_Contract Drawing_211036_SL_1014.dgn



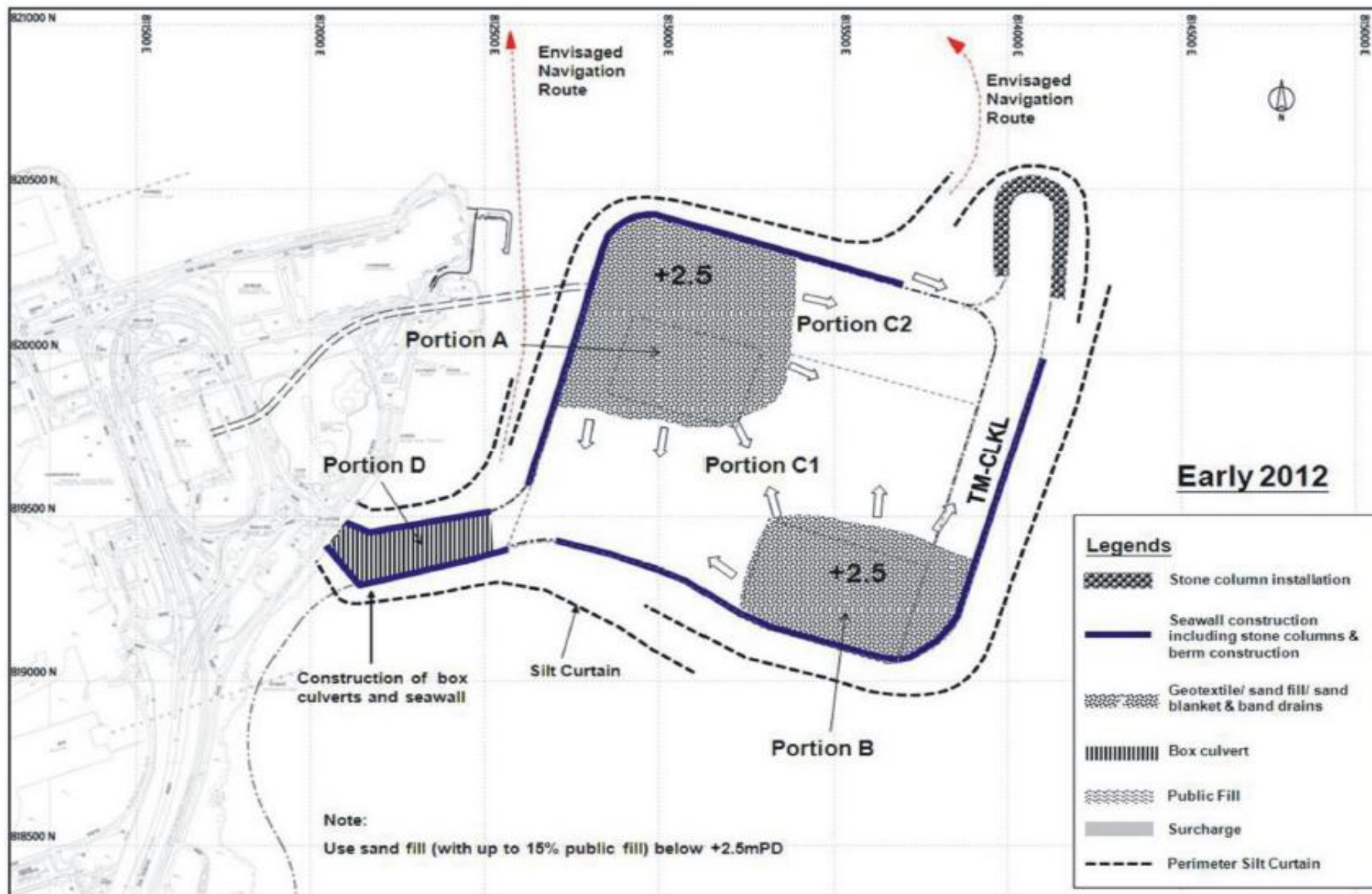
(Figure Originated from Figure 12 of EP-353/2009/D)

This Drawing has been prepared for the use of AECOM's client. It may not be used, modified, reproduced or relied upon by third parties, except as agreed by AECOM or as required by law. AECOM accepts no responsibility, and denies any liability whatsoever, to any party that uses or relies on this drawing without AECOM's express written consent. Do not scale this document. All measurements must be obtained from the stated dimensions.



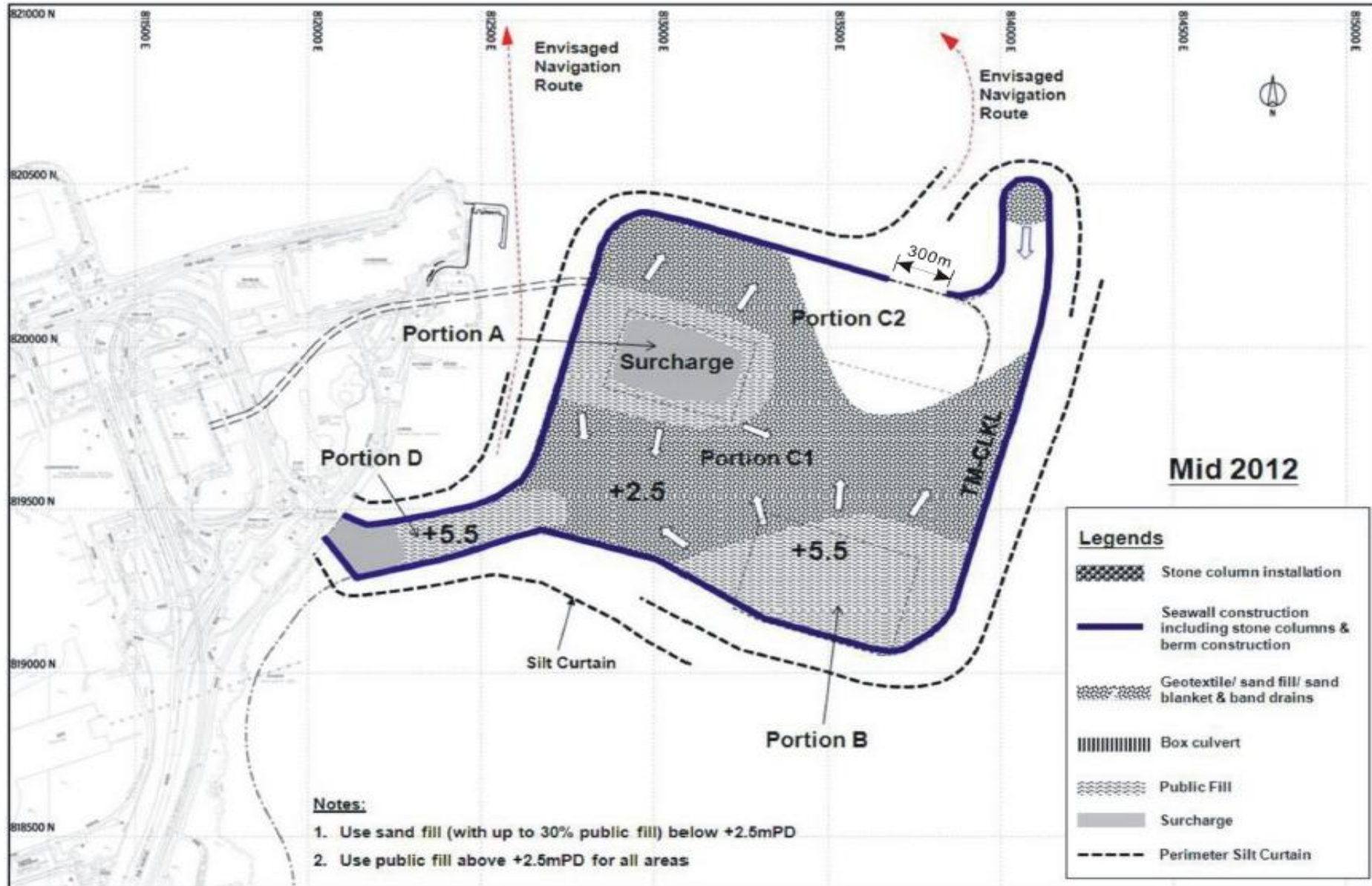
(Figure Originated from Figure 13 of EP-353/2009/D)

This Drawing has been prepared for the use of AECOM's client. It may not be used, modified, reproduced or relied upon by third parties, except as agreed by AECOM or as required by law. AECOM accepts no responsibility, and denies any liability whatsoever, to any party that uses or relies on this drawing without AECOM's express written consent. Do not scale this document. All measurements must be obtained from the stated dimensions.



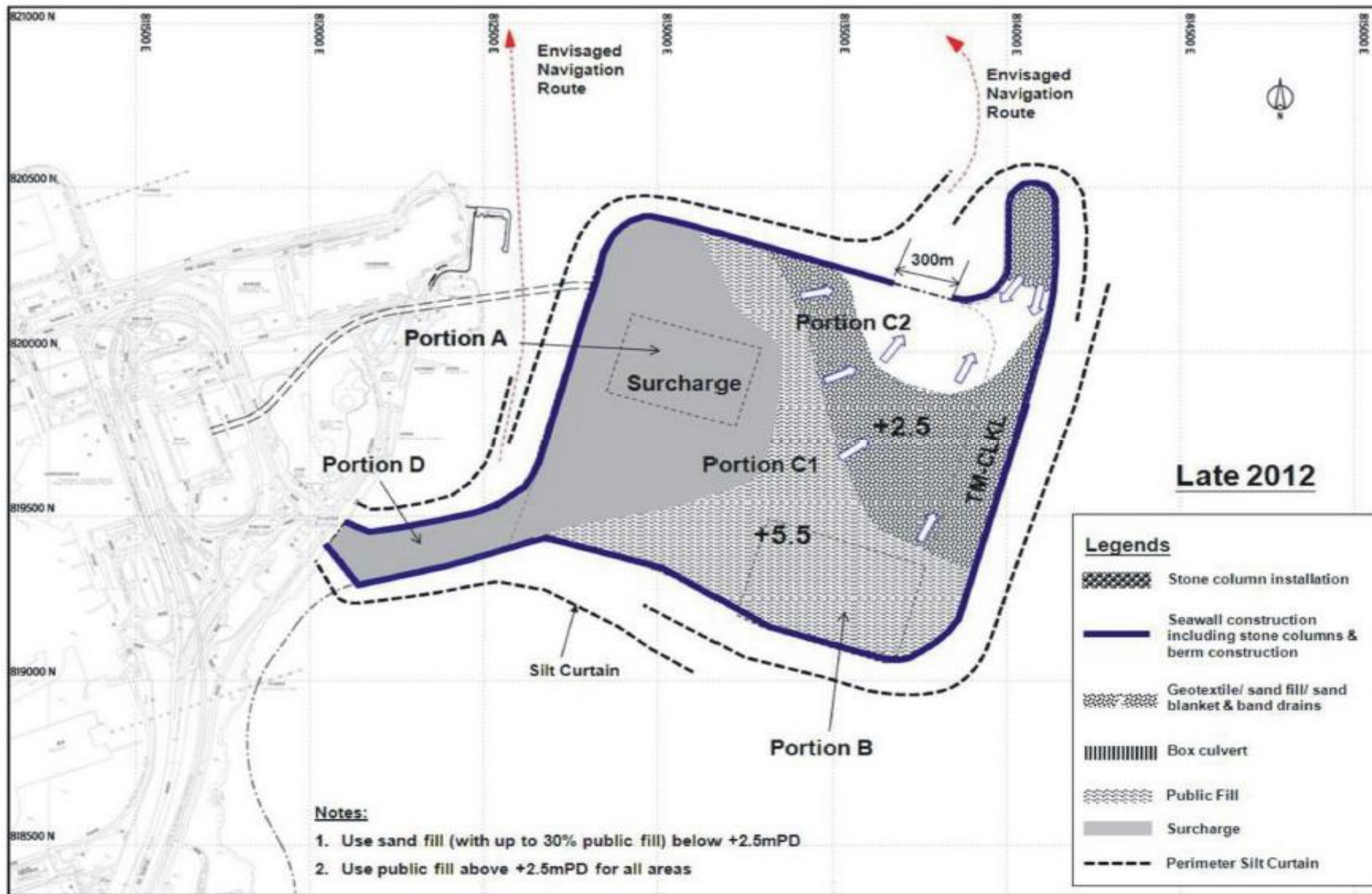
(Figure Originated from Figure 14 of EP-353/2009/D)

This Drawing has been prepared for the use of AECOM's client. It may not be used, modified, reproduced or relied upon by third parties, except as agreed by AECOM or as required by law. AECOM accepts no responsibility, and denies any liability whatsoever, to any party that uses or relies on this drawing without AECOM's express written consent. Do not scale this document. All measurements must be obtained from the stated dimensions.



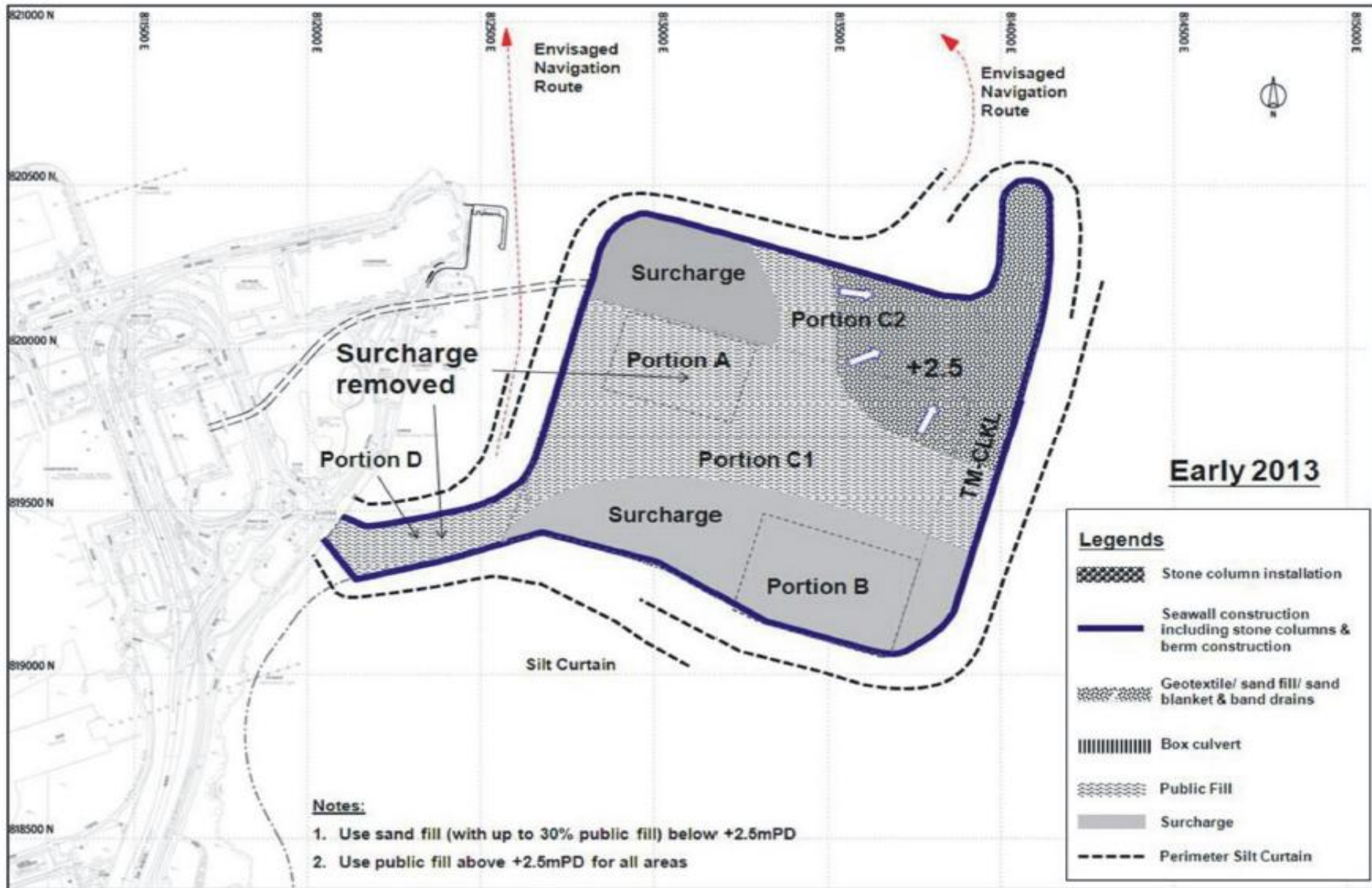
(Figure Originated from Figure 15 of EP-353/2009/D)

This Drawing has been prepared for the use of AECOM's client. It may not be used, modified, reproduced or relied upon by third parties, except as agreed by AECOM or as required by law. AECOM accepts no responsibility, and denies any liability whatsoever, to any party that uses or relies on this drawing without AECOM's express written consent. Do not scale this document. All measurements must be obtained from the stated dimensions.



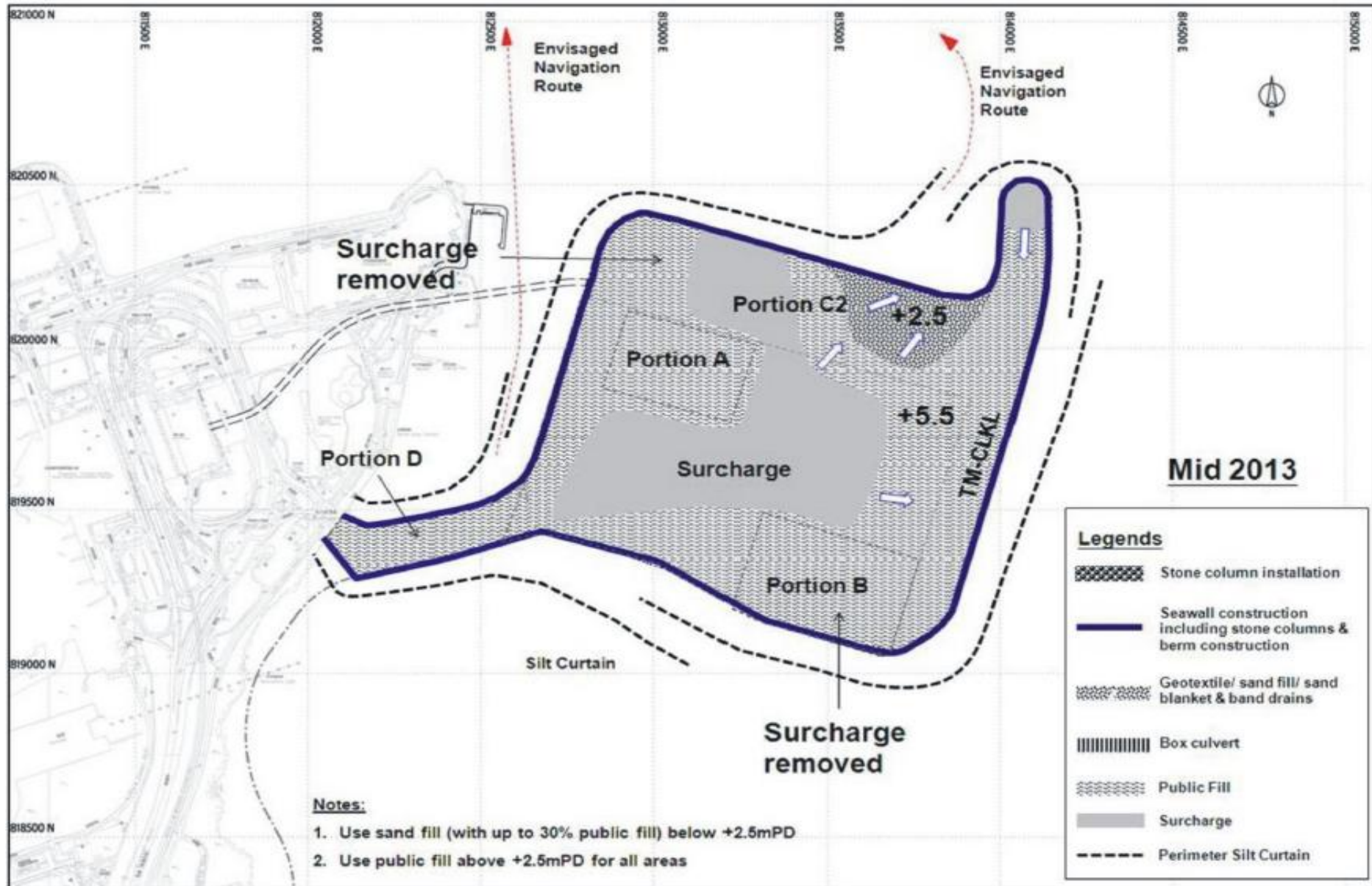
(Figure Originated from Figure 16 of EP-353/2009/D)

This Drawing has been prepared for the use of AECOM's client. It may not be used, modified, reproduced or relied upon by third parties, except as agreed by AECOM or as required by law. AECOM accepts no responsibility, and denies any liability whatsoever, to any party that uses or relies on this drawing without AECOM's express written consent. Do not scale this document. All measurements must be obtained from the stated dimensions.



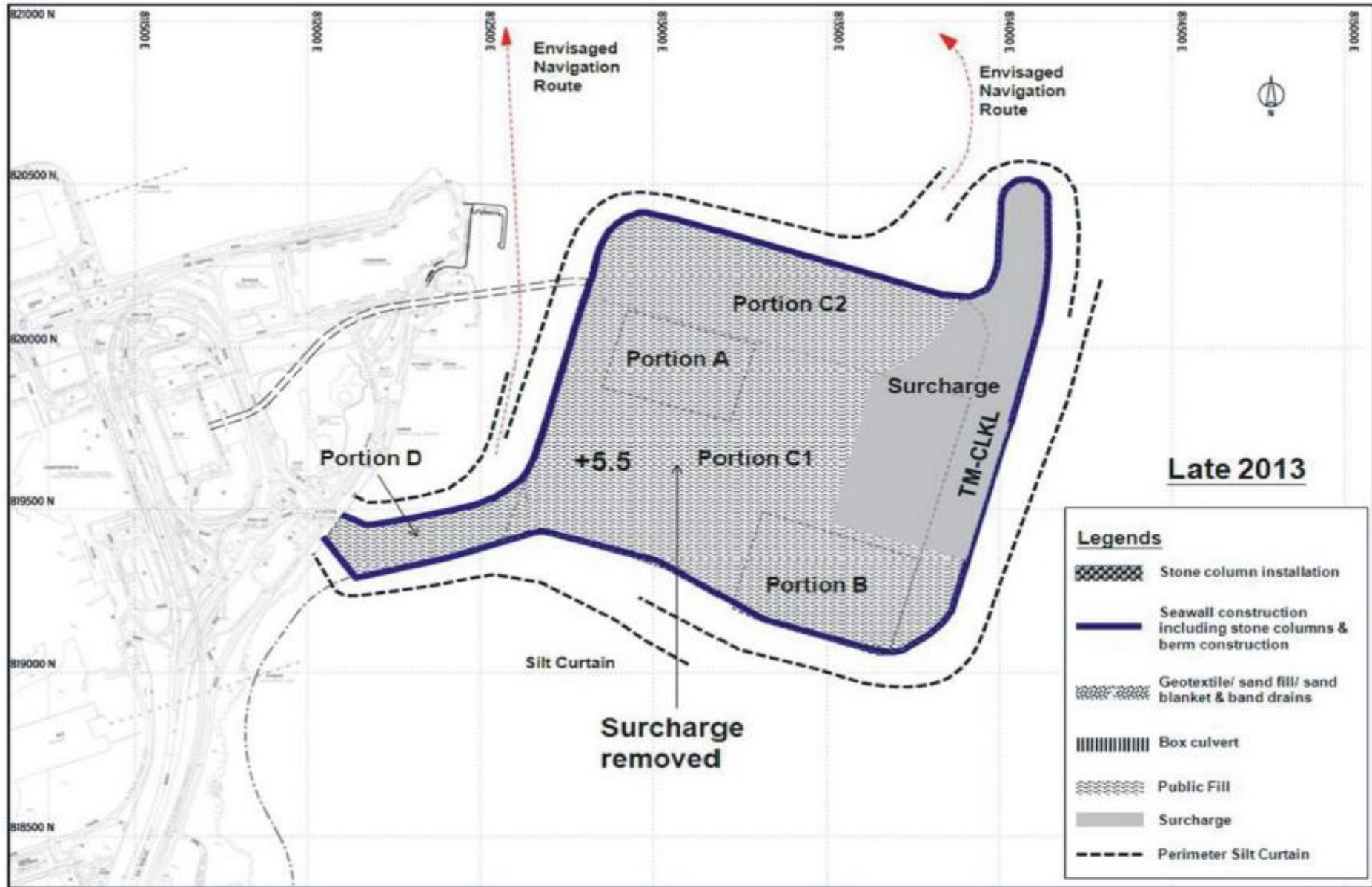
(Figure Originated from Figure 17 of EP-353/2009/D)

This Drawing has been prepared for the use of AECOM's client. It may not be used, modified, reproduced or relied upon by third parties, except as agreed by AECOM or as required by law. AECOM accepts no responsibility, and denies any liability whatsoever, to any party that uses or relies on this drawing without AECOM's express written consent. Do not scale this document. All measurements must be obtained from the stated dimensions.



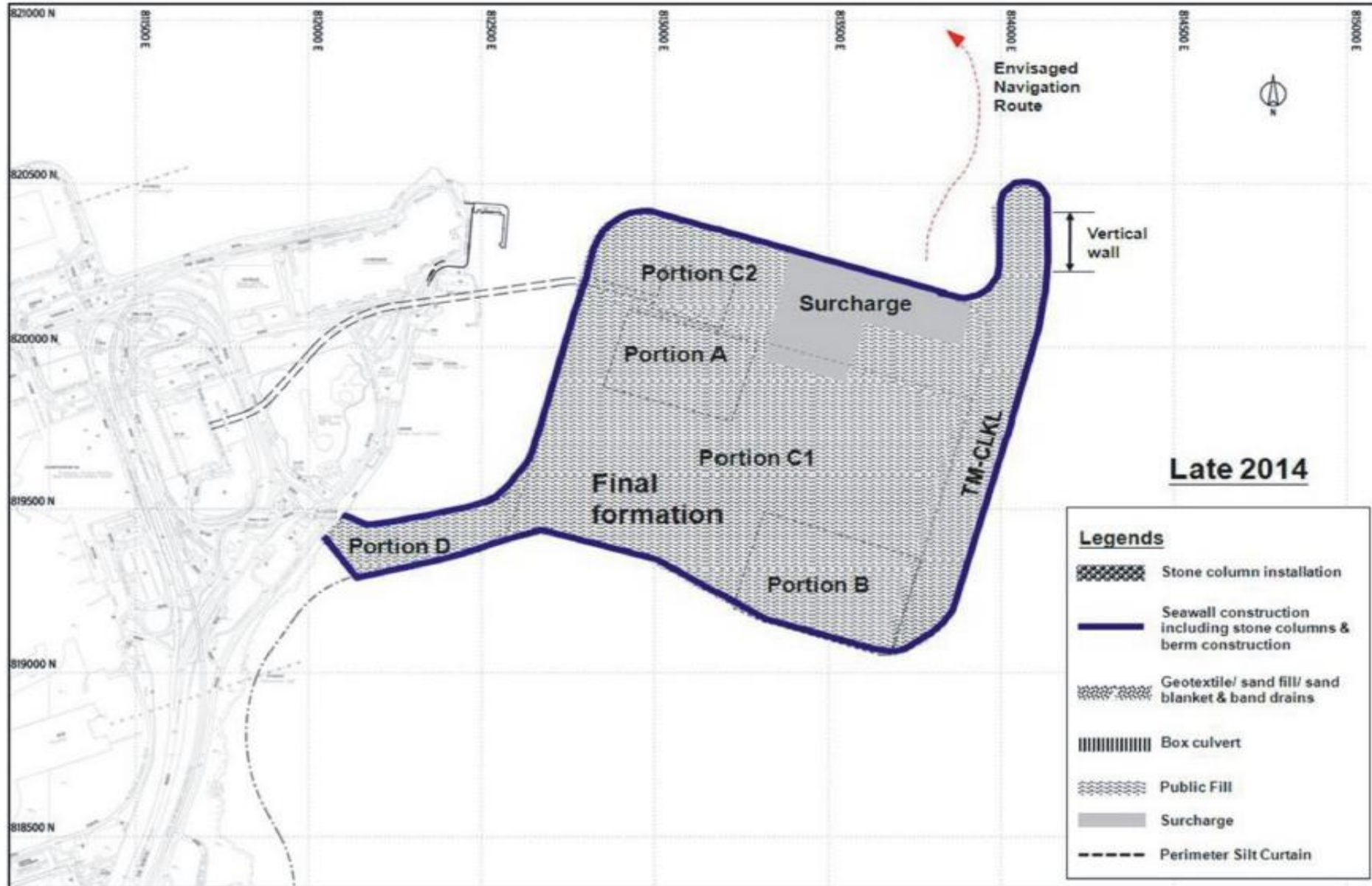
(Figure Originated from Figure 18 of EP-353/2009/D)

This Drawing has been prepared for the use of AECOM's client. It may not be used, modified, reproduced or relied upon by third parties, except as agreed by AECOM or as required by law. AECOM accepts no responsibility, and denies any liability whatsoever, to any party that uses or relies on this drawing without AECOM's express written consent. Do not scale this document. All measurements must be obtained from the stated dimensions.



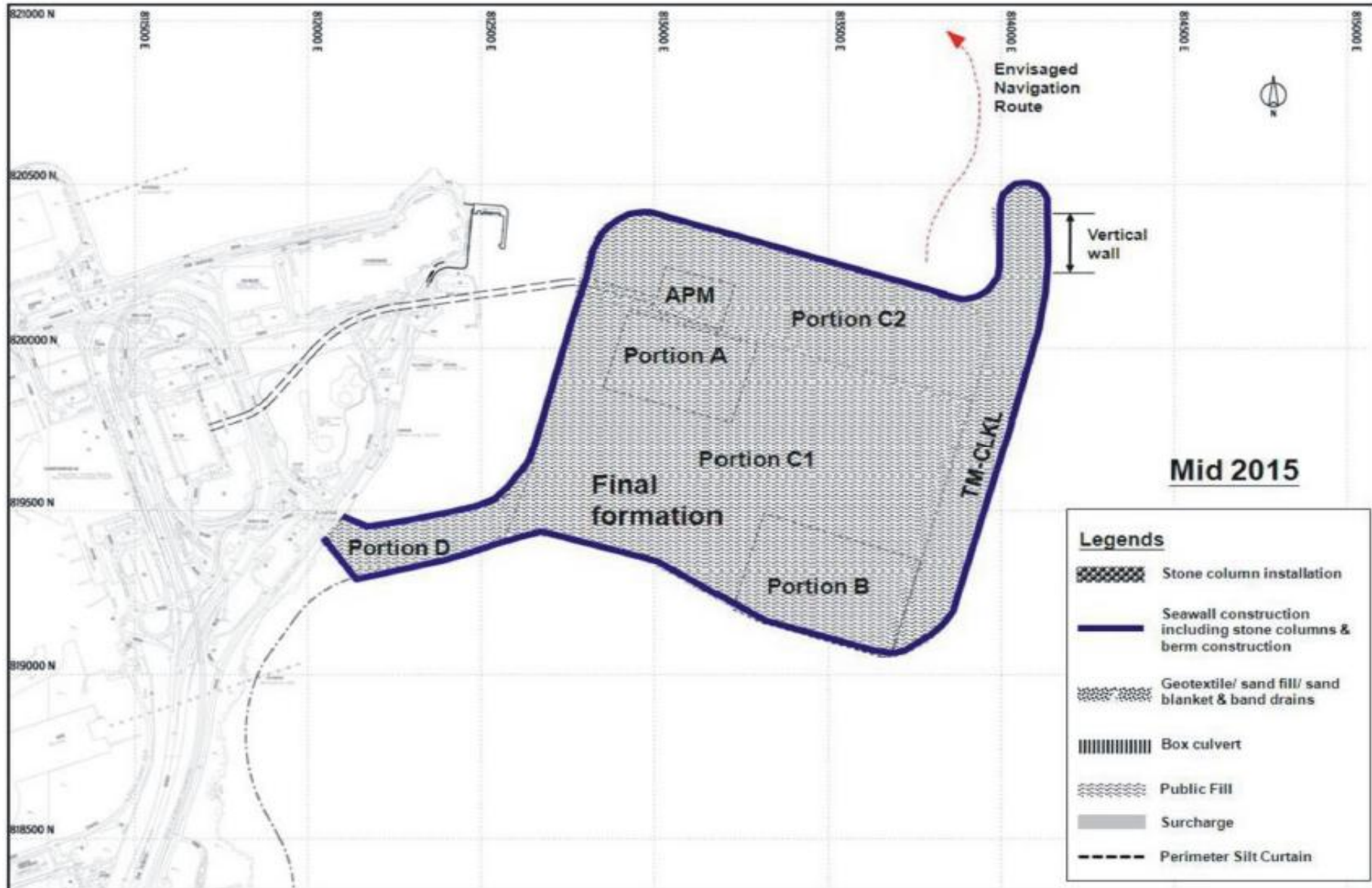
(Figure Originated from Figure 19 of EP-353/2009/D)

This Drawing has been prepared for the use of AECOM's client. It may not be used, modified, reproduced or relied upon by third parties, except as agreed by AECOM or as required by law. AECOM accepts no responsibility, and denies any liability whatsoever, to any party that uses or relies on this drawing without AECOM's express written consent. Do not scale this document. All measurements must be obtained from the stated dimensions.



(Figure Originated from Figure 20 of EP-353/2009/D)

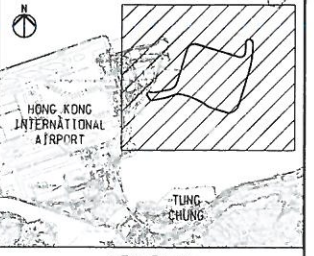
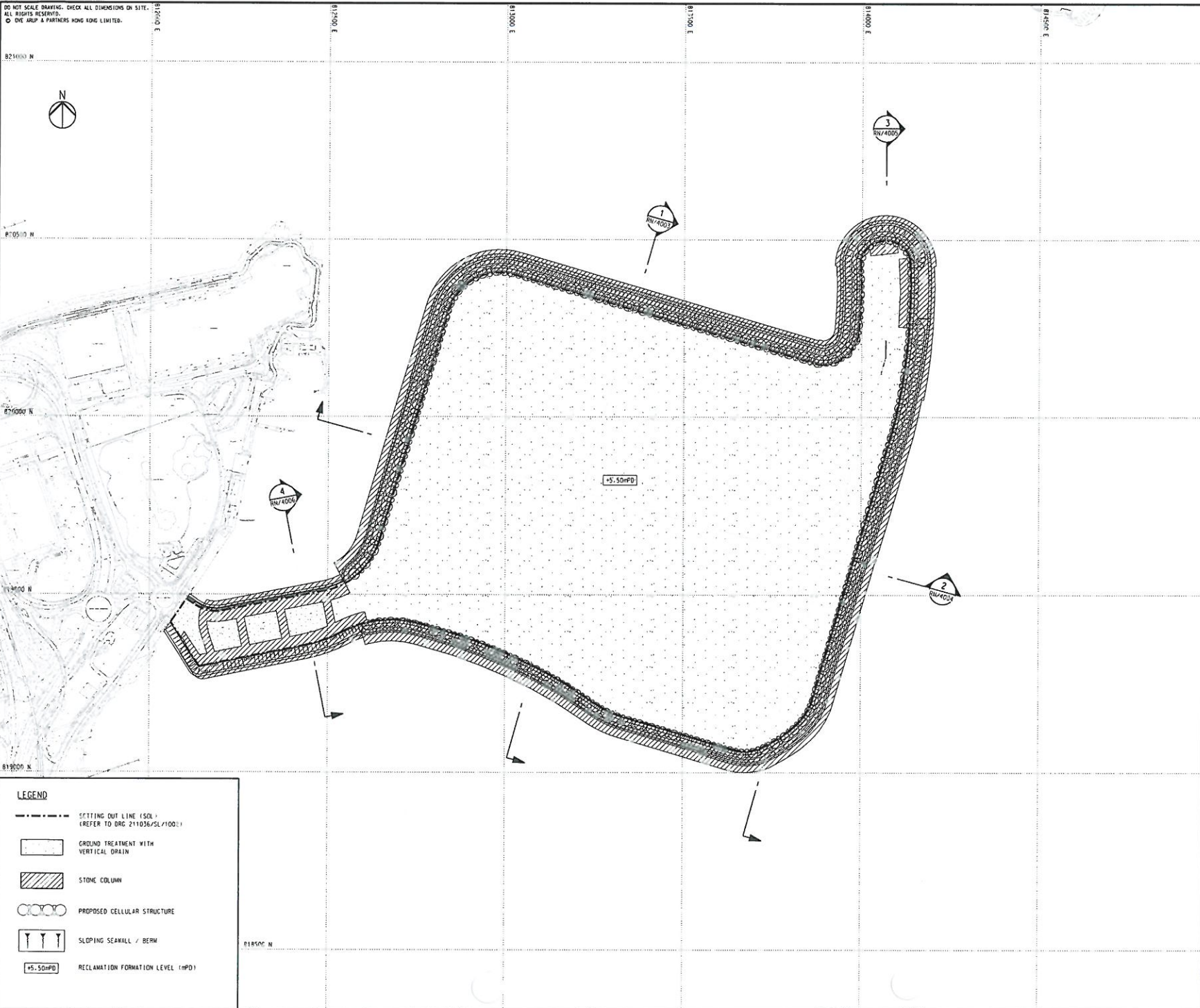
This Drawing has been prepared for the use of AECOM's client. It may not be used, modified, reproduced or relied upon by third parties, except as agreed by AECOM or as required by law. AECOM accepts no responsibility, and denies any liability whatsoever, to any party that uses or relies on this drawing without AECOM's express written consent. Do not scale this document. All measurements must be obtained from the stated dimensions.



(Figure Originated from Figure 21 of EP-353/2009/D)

This Drawing has been prepared for the use of AECOM's client. It may not be used, modified, reproduced or relied upon by third parties, except as agreed by AECOM or as required by law. AECOM accepts no responsibility, and denies any liability whatsoever, to any party that uses or relies on this drawing without AECOM's express written consent. Do not scale this document. All measurements must be obtained from the stated dimensions.

DO NOT SCALE DRAWING. CHECK ALL DIMENSIONS ON SITE.
 ALL RIGHTS RESERVED.
 © OVE ARUP & PARTNERS HONG KONG LIMITED.



KEY PLAN

NOTES

1. ALL LEVELS ARE IN METRES ABOVE HONG KONG PRINCIPAL DATUM (HPS).
2. ALL COORDINATES ARE RELATED TO HONG KONG 1980 GRID.
3. FOR GENERAL LAYOUT OF CANAL REFER TO DRG NO. 211036/SK/5001.
4. FOR PLAN AND DETAILS OF STONE COLUMN, REFER TO DRG NO. 211036/RN/4061.
5. FOR PLAN AND DETAILS OF VERTICAL DRAINS, REFER TO DRG NO. 211036/RN/4052.
6. FOR TEMPORARY DRAINAGE AND CROSS-FALL REFER TO DRG NO. 211036/RN/4051.

Rev	Description	By	Date
-	TENDER DRAWING	TL	02/11

Consultant
ARUP 奧雅納工程顧問
 Ove Arup & Partners Hong Kong Limited

Supported By:

- Ecovsystems Ltd.
- EDA Marine Ltd.
- Geotechnical Consulting Group (ASIO) Ltd.
- Hong Kong Cetacem Research Project
- IntelBuild Technyx Asia Limited
- Tony Gee and Partners LLP

Contract No. and Title
 Contract No. HY/2010/02
 Hong Kong-Zhuhai-Macao Bridge
 Hong Kong Boundary Crossing Facilities
 - Reclamation Works

Drawing title
RECLAMATION PLAN

Drawing no.	211036/RN/4001	Rev.	-
Drawn	Date	Checked	Approved
RL	05/10	XYT	DML
Scale	1:5000 @A1 1:10000 @A3	Status	TENDER



LEGEND

- SETTING OUT LINE (SOL) (REFER TO DRG. 211036/SL/1001)
- GROUND TREATMENT WITH VERTICAL DRAIN
- STONE COLUMN
- PROPOSED CELLULAR STRUCTURE
- SLOPING SEAWALL / BERM
- RECLAMATION FORMATION LEVEL (mPD)

Printed by : 17/2/2011
 Filename : J:\211036\ARUP\GEO\211036_RN_4001.dgn