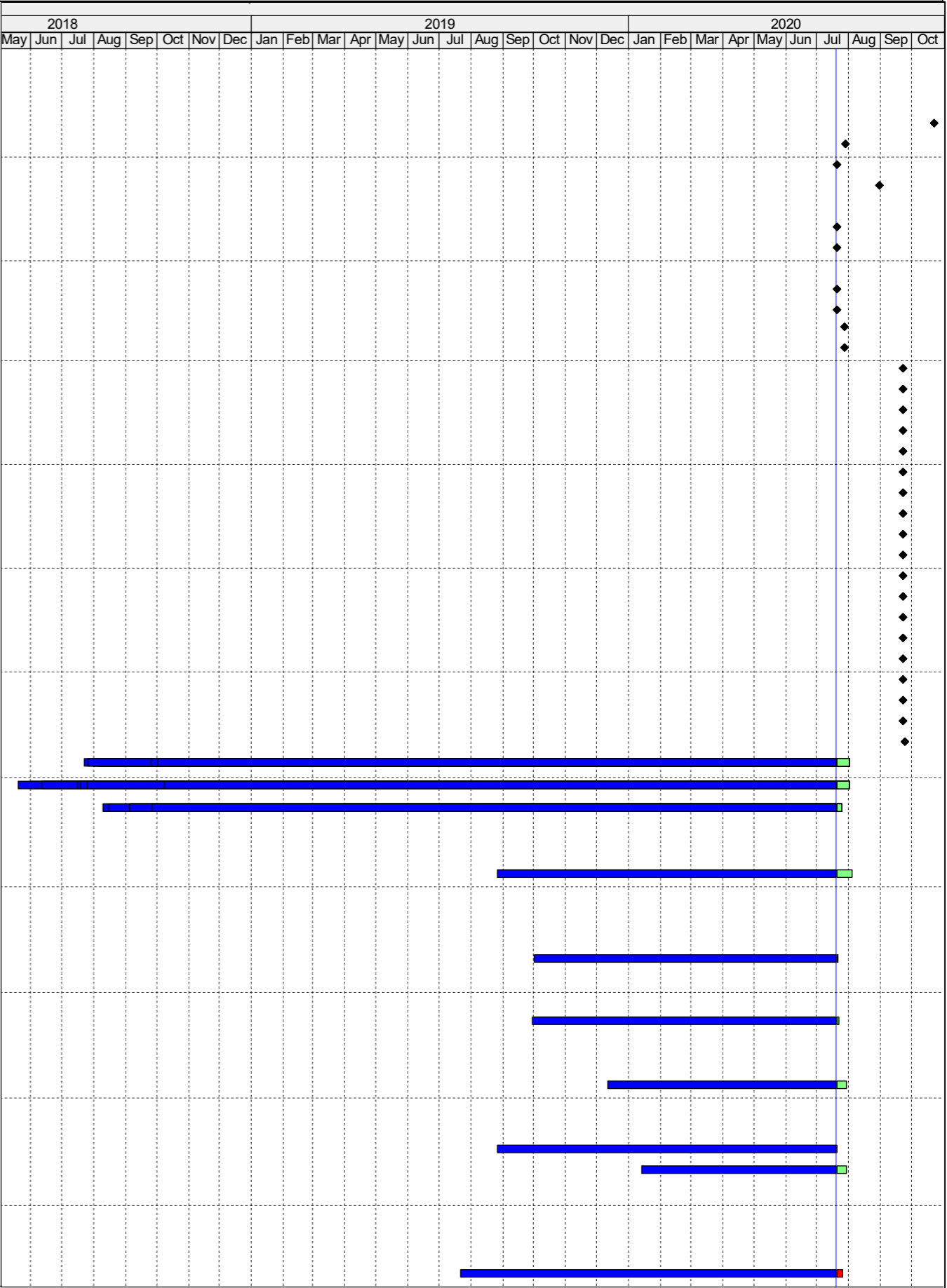


Appendix B

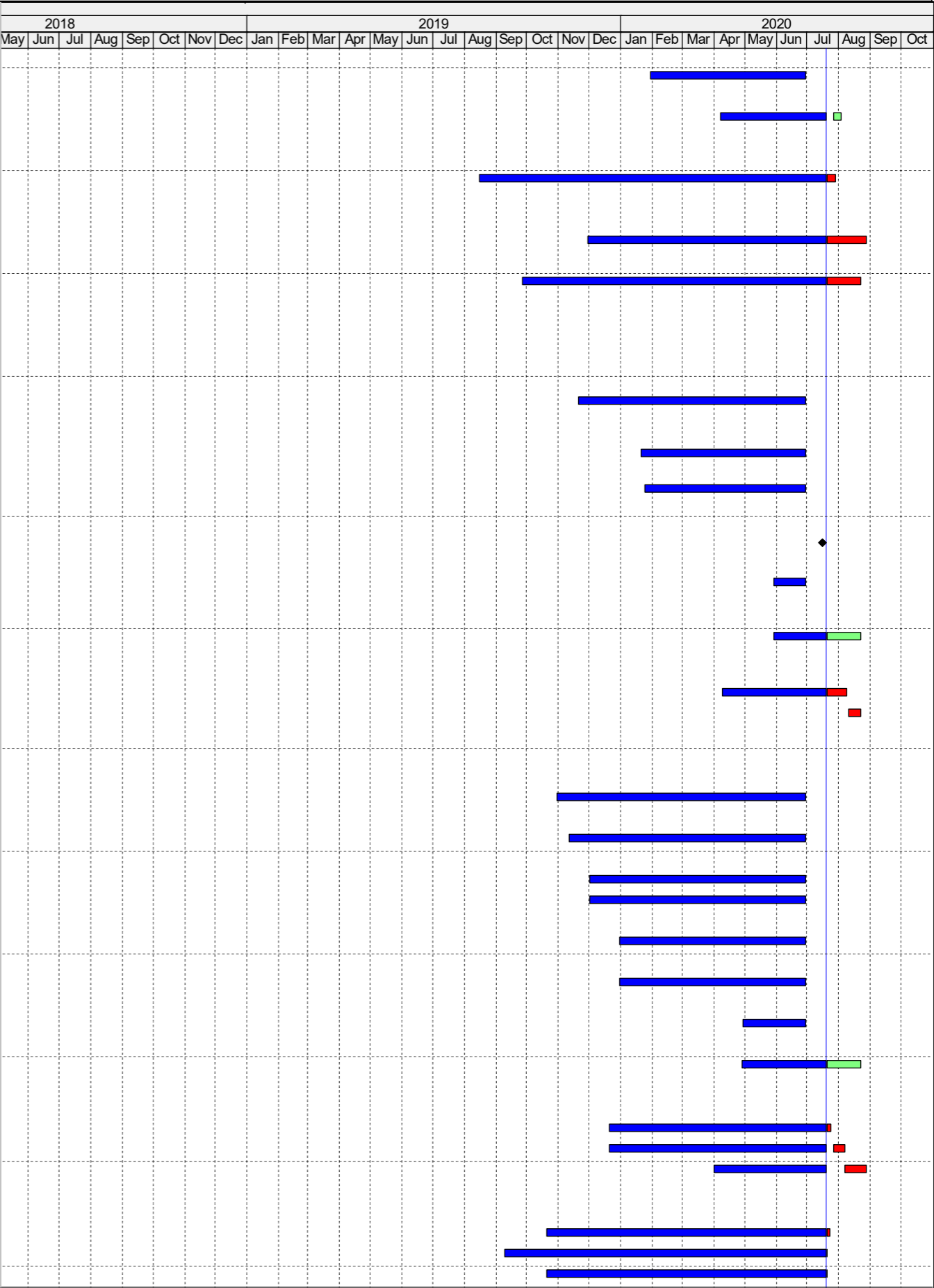
## Construction Programme

ID	Activity	Duration (Days)	Duration % Complete
HY2017/10 - Works Programme Three Month Rolling Programme 20-Jul-20			
Contract Dates			
Key Dates			
KD08	KD08 - All Other Works for Tunnel Comissioning & Opening	0	0%
KD09	KD09 - C&ED Building, E&M Works, & FSD Inspection	0	0%
KD10	KD10 - FSD Building, E&M Works, & FSD Inspection	0	0%
KD11	KD11 - Landscape Soft Works & Trees Protection	0	0%
Portion Possession Dates			
P325	Possession to Portion XXII (Day 483)	0	0%
P335	Possession to Portion XXIII (Day 483)	0	0%
Portion Handover Dates			
H120	Vacate Portion XVIb (KD10+28)	0	0%
H130	Vacate Portion XVIa (KD10+28)	0	0%
H140	Vacate Portion XVb (KD9+28)	0	0%
H150	Vacate Portion XVa (KD9+28)	0	0%
H160	Vacate Portion XXIa (KD8+28)	0	0%
H170	Vacate Portion XXIb (KD8+28)	0	0%
H180	Vacate Portion XXII (KD8+28)	0	0%
H190	Vacate Portion XXIII (KD8+28)	0	0%
H200	Vacate Portion XII (KD8+28)	0	0%
H210	Vacate Portion XIII (KD8+28)	0	0%
H220	Vacate Portion XIV (KD8+28)	0	0%
H230	Vacate Portion XVIIa (KD8+28)	0	0%
H240	Vacate Portion Ve (KD8+28)	0	0%
H250	Vacate Portion Vc (KD8+28)	0	0%
H260	Vacate Portion VIb (KD8+28)	0	0%
H270	Vacate Portion VIII (KD8+28)	0	0%
H280	Vacate Portion XI (KD8+28)	0	0%
H290	Vacate Portion VII (KD8+28)	0	0%
H300	Vacate Portion IX (KD8+28)	0	0%
H310	Vacate Portion X (KD8+28)	0	0%
H320	Vacate Portion XXIc (KD8+28)	0	0%
H330	Vacate Portion WA6 (KD8+28)	0	0%
H340	Vacate Portion XIX (KD11+28)	0	0%
Major Design Submission & Approval			
Major Material Submission & Approval			
Drawing Submission & Approval			
Key Date 1 - Toll Control Building (TCB) & TCSS Provision			
ABWF Works (for All)			
ATCB1130	ABWF second fix & final fix	90	85%
Key Date 2 - Administration Building, Maintenance Depot, Kiosk N2, TCSS Provision			
Administration Building (ADB)			
ABWF Works (for All)			
AADB1200	ABWF second fix & final fix	90	98%
Maintenance Depot			
ABWF Works (for All)			
AMD1070	ABWF second fix & final fix	80	97%
Key Date 6 - E&M Works for Administration Building, Maintenance Depot, North Vent Building, Kiosk N2			
Remaining Works			
KD6-OSW-1000	Remaining Works (Non FSI related)	42	80%
Key Date 3 - Satellite Control Building & TCSS Provision			
ABWF Works (for All)			
ASCB1020	ABWF Works to Plant Rooms G/F	60	100%
ASCB1070	ABWF second fix & final fix	56	85%
Key Date 5 - E&M Works for TCB, Toll Area, Kiosk N1, Underpass, Plant Rm, and Approach Roads			
E&M Works for TCB			
Installation			
G/F			
TCB-EMGF1240	E&M Installation - PD Plant Rooms - G/F	60	90%



CONTRACT NO. HY2017/10				P 1	Date	Revision	Checked	Approved
TM-CLKL NORTHERN CONNECTION TUNNEL BUILDINGS, E&M WORKS					20-Jul-20			
THREE MONTHLY PROGRAMME AS OF 20 Jul 2020								

ID	Activity	Duration (Days)	Duration % Complete
	Testing and Commissioning		
	TCB-TC1030 Non-Essential T&C	12	100%
	Remaining Works for TCB (Non-FSI related)		
	KD5-OSW-1000 Remaining Works (Non FSI related)	42	85%
	Underpass		
	E&M Works at Underpass		
	VU180 Cladding Works	25	68%
	Approach Roads		
	Under Portions IX, XI, XX		
	AR150 T&C of Roding Lighting	30	0%
	Under Portion X		
	AR200 T&C of Roding Lighting in portion X	30	0%
	Key Date 7 - E&M Works for Satellite Control Building and Kiosks S1&S2		
	E&M Works for Satellite Control Building		
	E&M Works		
	Installation		
	G/F		
	SCB-EMGF1200 E&M Installation - PD Plant Rooms - G/F	90	100%
	1/F		
	SCB-EM1F1050 E&M Installation - Computer Room (TCSS) - 1/F	60	100%
	SCB-EM1F1120 E&M Installation - ELV Plant Room - 1/F	70	100%
	Lift Installation (L01)		
	SCB-LF1050 Issuance of lift use permit	0	100%
	Testing & Commissioning		
	SCB-TC1030 Non-Essential T&C	30	100%
	Remaining Works for SCB (Non-FSI related)		
	KD7-OSW-1010 Remaining Works (Non-FSI related)	42	30%
	Kiosk S2		
	S2140 E&M works	36	50%
	S2150 T&C	12	0%
	Key Date 6C - E&M Works for South Ventilation Building		
	Installation		
	B2/F		
	SVB-EMB21110 E&M Installation - PD Palnt Rooms - B2/F	60	100%
	B1/F		
	SVB-EMB11120 E&M Installation - Elv Plant Rooms - B1/F	48	100%
	G/F		
	SVB-EMGF1200 E&M Installation - PD Plant Rooms - G/F	40	100%
	SVB-EMGF1220 E&M Installation - Elv Plant Rooms - G/F	48	100%
	1/F		
	SVB-EM1F1280 E&M Installation - ELV Plant Rooms - 1/F	50	100%
	2/F		
	SVB-EM2F1120 E&M Installation - PD Plant Rooms - 2/F	40	100%
	Testing & Commissioning		
	SVB-TC1040 Non-Essential T&C	30	100%
	Remaining Works for SVB (Non-FSI related)		
	KD6C-OSW-1000 Remaining Works (Non-FSI related)	42	30%
	Key Date 6A - E&M Works for Approach Roads at North Side		
	Approach Roads		
	EAR120 Road Lighting Cabling	50	90%
	EAR130 Road Ligting Installation & Termination	50	80%
	EAR140 T&C & Miscellaneous Works for Statutory Inspection	12	0%
	Key Date 10 - FSD Building Structure & E&M Works		
	ABWF Works		
	AFSD1010 Door and Window Frames	19	80%
	AFSD1020 ABWF Works to Plant Rooms G/F	56	99%
	AFSD1021 ABWF Works to Plant Rooms 1/F	56	99%



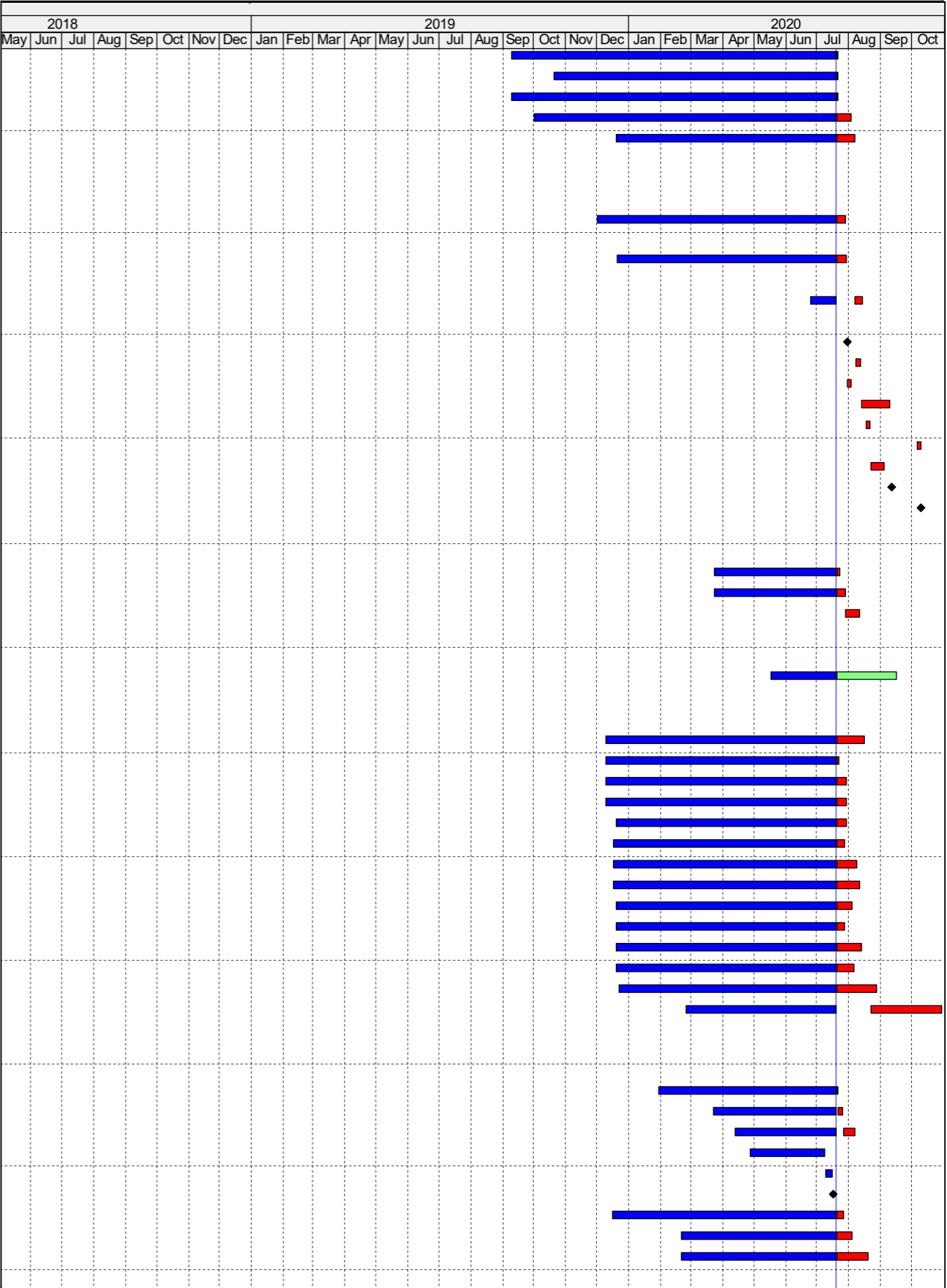
CONTRACT NO. HY2017/10

TM-CLKL NORTHERN CONNECTION TUNNEL BUILDINGS, E&M WORKS

THREE MONTHLY PROGRAMME AS OF 20 Jul 2020

P 2	Date	Revision	Checked	Approved
	20-Jul-20			

ID	Activity		Duration (Days)	Duration % Complete
	AFSD1030	ABWF Works to Office and Corridors G/F	124	99%
	AFSD1031	ABWF Works to Office and Corridors 1/F	124	99%
	AFSD1040	ABWF Works to Toilets G/F	136	99%
	AFSD1060	External Cladding and Wall Plastering	101	88%
	AFSD1070	ABWF second fix & final fix	73	78%
	E&M Works			
	Installation			
	G/F			
	FSDB-EMGF1160	E&M Installation - Elv Plant Rooms - G/F	50	85%
	1/F			
	FSDB-EM1F1140	E&M Installation - PD Plant Rooms - 1/F	60	85%
	Testing and Commissioning			
	FSDB-TC1030	Non-Essential T&C	30	80%
	Statutory Inspections and approvals			
	FSDB-SI1040	Submit WWO46 Part IV for PD	0	0%
	FSDB-SI1060	WSD inspection of Plumbing Installation (PL)	4	0%
	FSDB-SI1070	WSD inspection of Plumbing Installation (FS)	4	0%
	FSDB-SI1080	Water Samples Test	24	0%
	FSDB-SI1090	Obtain Water Certificate and water supply connection - FS	4	0%
	FSDB-SI1100	Obtain Water Certificate and water supply connection - PL	4	0%
	FSDB-SI1120	FSD Inspection	12	0%
	FSDB-SI1130	Obtain FSI Certificate FS 172	0	0%
	FSDB-SI1140	KD10 Achieved	0	0%
	Key Date 7A - E&M Works for Approach Roads at South Side			
	Approach Roads			
	EAR180	Road Lighting Cabling (Via)	18	80%
	EAR190	Road Ligting Installation & Termination	18	60%
	EAR200	T&C	12	0%
	Tunnel			
	Remaining Works for Tunnel (CH2500 - 1800)			
	A1010	Remaining Works (Non FSI related)	98	48.98%
	Key Date 9 - C&ED Building & E&M Works			
	ABWF Works			
	ACED1010	Door and Window Frames	48	50%
	ACED1020	ABWF Works to Plant Rooms G/F	60	95%
	ACED1021	ABWF Works to Plant Rooms 1/F	60	85%
	ACED1022	ABWF Works to Plant Rooms 2/F	60	85%
	ACED1023	ABWF Works to Plant Rooms 3/F	60	85%
	ACED1030	ABWF Works to Office and Corridors G/F	133	95%
	ACED1031	ABWF Works to Office and Corridors 1/F	118	85%
	ACED1032	ABWF Works to Office and Corridors 2/F	130	85%
	ACED1033	ABWF Works to Office and Corridors 3/F	92	85%
	ACED1040	ABWF Works to Toilets G/F	142	95%
	ACED1041	ABWF Works to Toilets 2/F	142	85%
	ACED1042	ABWF Works to Toilets 3/F	98	85%
	ACED1060	External Cladding and Wall Plastering	97	65%
	ACED1070	ABWF second fix & final fix	69	20%
	E&M Works			
	Installation			
	G/F			
	C&EDB-GF1010	E&M Installation - 1st fix - G/F	40	97%
	C&EDB-GF1020	E&M Installation - 2nd fix - G/F	40	88%
	C&EDB-GF1030	E&M Installation - Final fix - G/F	40	75%
	C&EDB-GF1070	Installation by CLP - CLP Tx Room - G/F	82	100%
	C&EDB-GF1080	Wiring Inspection with CLP	12	100%
	C&EDB-GF1090	Power On Energization by CLP	0	100%
	C&EDB-GF1120	E&M Installation - Generator & Fuel Tank Rooms - G/F	90	93%
	C&EDB-GF1140	E&M Installation - FS Plant Rooms - G/F	90	85%
	C&EDB-GF1160	E&M Installation - Elv Plant Rooms - G/F	90	70%
	1/F			



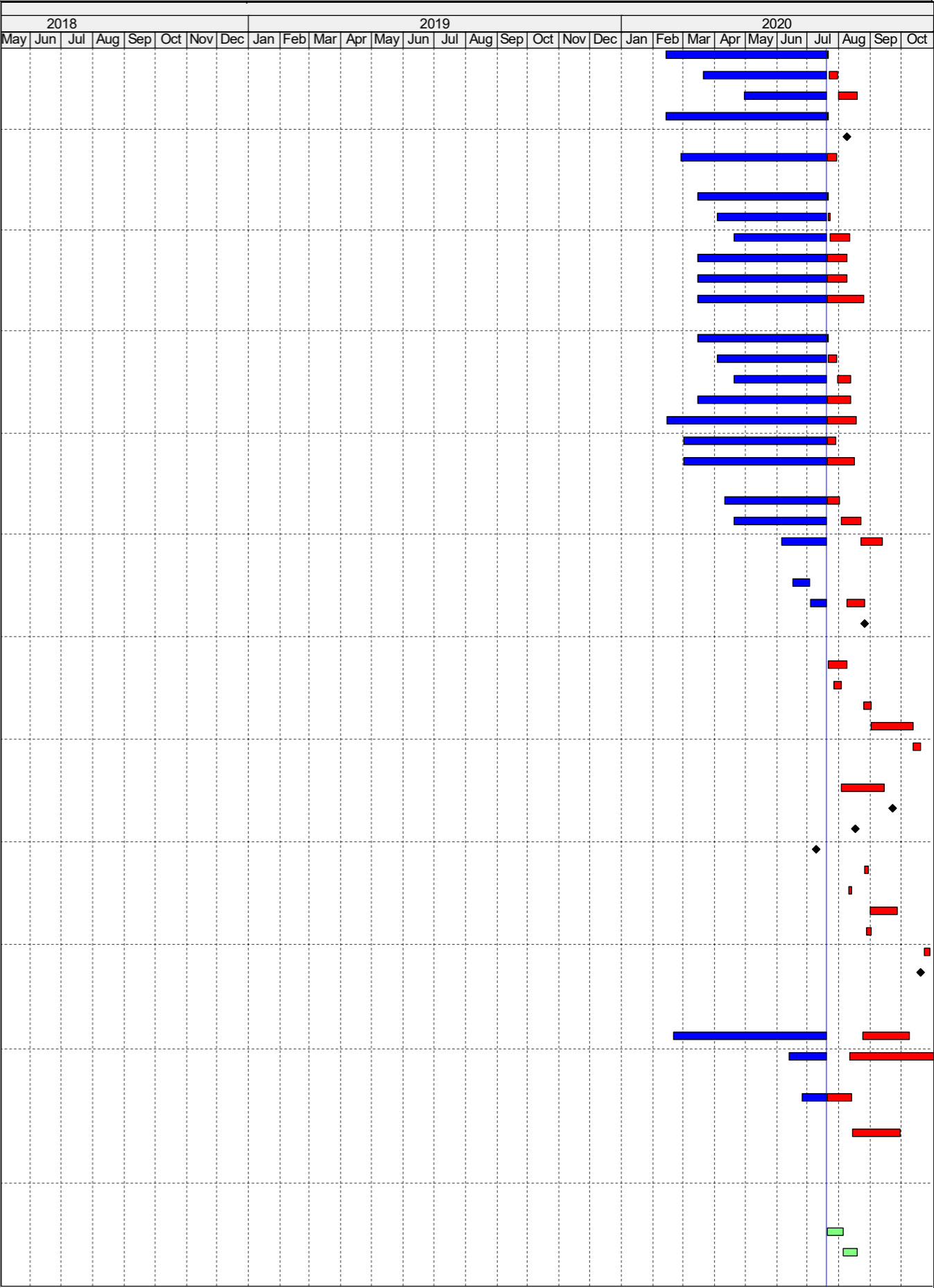
CONTRACT NO. HY2017/10

TM-CLKL NORTHERN CONNECTION TUNNEL BUILDINGS, E&M WORKS

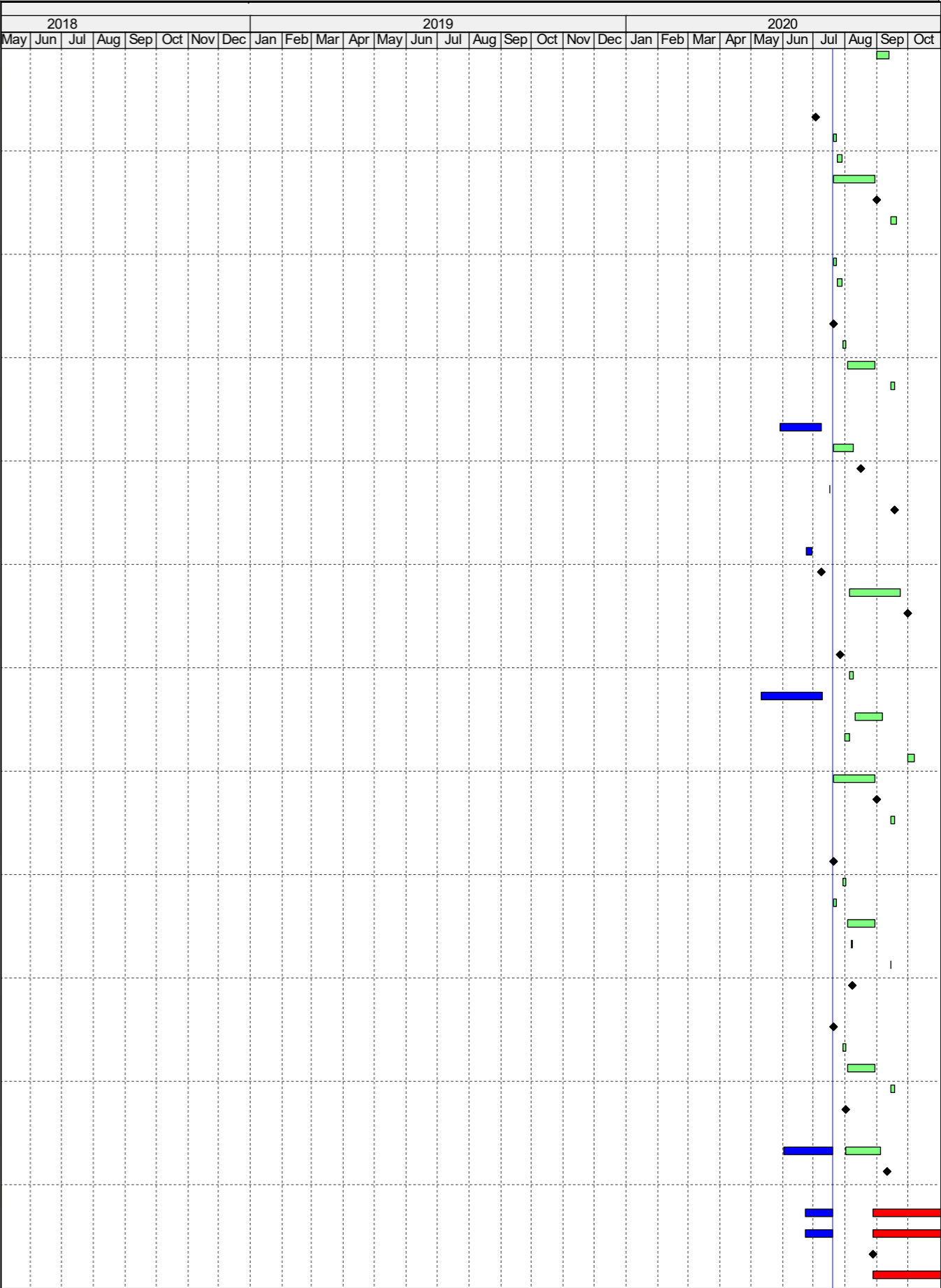
THREE MONTHLY PROGRAMME AS OF 20 Jul 2020

P 3	Date	Revision	Checked	Approved
	20-Jul-20			

ID	Activity	Duration (Days)	Duration % Complete
	C&EDB-1F1010	E&M Installation - 1st fix - 1/F	4095%
	C&EDB-1F1020	E&M Installation - 2nd fix - 1/F	4080%
	C&EDB-1F1030	E&M Installation - Final fix - 1/F	4060%
	C&EDB-1F1050	E&M Installation - LV Switch Room - 1/F	6098%
	C&EDB-1F1070	Sub-Circuit Power On - LV Switch Room - 1/F	00%
	C&EDB-1F1090	E&M Installation - Electrical Plant Rooms - 1/F	9090%
	2/F		
	C&EDB-2F1010	E&M Installation - 1st fix - 2/F	4097%
	C&EDB-2F1020	E&M Installation - 2nd fix - 2/F	4095%
	C&EDB-2F1030	E&M Installation - Final fix - 2/F	4060%
	C&EDB-2F1060	E&M Installation - Electrical Plant Rooms - 2/F	9080%
	C&EDB-2F1080	E&M Installation - FS Plant Rooms - 2/F	9080%
	C&EDB-2F1100	E&M Installation - Elv Plant Rooms - 2/F	9065%
	3/F		
	C&EDB-3F1010	E&M Installation - 1st fix - 3/F	3095%
	C&EDB-3F1020	E&M Installation - 2nd fix - 3/F	3075%
	C&EDB-3F1030	E&M Installation - Final fix - 3/F	3060%
	C&EDB-3F1060	E&M Installation - Electrical Plant Rooms - 3/F	8475%
	C&EDB-3F1080	E&M Installation - MVAC Plant Rooms - 3/F	8470%
	C&EDB-3F1100	E&M Installation - FS Plant Rooms - 3/F	8090%
	C&EDB-3F1120	E&M Installation - PD Plant Rooms - 3/F	6060%
	Roof		
	C&EDB-RF1010	E&M Installation - 1st fix - Roof	3060%
	C&EDB-RF1020	E&M Installation - 2nd fix - Roof	2530%
	C&EDB-RF1030	E&M Installation - Final fix - Roof	2010%
	Lift Installation		
	C&EDB-LF1030	Testing & commissioning	12100%
	C&EDB-LF1040	Final adjustment, Submission of Form LE5 & EMSD processing	3050%
	C&EDB-LF1050	Issuance of lift use permit	00%
	Testing and Commissioning		
	C&EDB-TC1000	T&C for Subcircuit Power On	160%
	C&EDB-TC1010	T&C for DG Licence	60%
	C&EDB-TC1020	Equipment Start-up T&C for FSI	60%
	C&EDB-TC1023	Individual E&M System T&C for FSI	330%
	C&EDB-TC1025	Intergrated T&C for FSI	60%
	Statutory Inspections and approvals		
	C&EDB-SI1020	DG Inspection by FSD	360%
	C&EDB-SI1030	Obtain DG Licence	00%
	C&EDB-SI1040	Submit WWO46 Part IV for PD	00%
	C&EDB-SI1050	Submit WWO46 Part IV for FS	0100%
	C&EDB-SI1060	WSD inspection of Plumbing Installation (PL)	40%
	C&EDB-SI1070	WSD inspection of Plumbing Installation (FS)	40%
	C&EDB-SI1080	Water Samples Test	240%
	C&EDB-SI1090	Obtain Water Certificate and water supply connection - FS	40%
	C&EDB-SI1100	Obtain Water Certificate and water supply connection - PL	40%
	C&EDB-SI1110	Final Submission of Form FSI 314 / 501 to FSD	00%
	Key Date 11 - Landscape Soft Works & Trees Protection		
	Landscape Soft Works		
	SL120	Landscape Soft Works at North Side (wet season)	12268.85%
	SL140	Landscape Soft Works at South Side (wet season)	10215%
	Trees Protection		
	SL203	Protection Existing Trees & Submit Report with Photographic Record No.14	4146.34%
	SL204	Protection Existing Trees & Submit Report with Photographic Record No.15	400%
	Key Date 8 - All Works for Tunnel Comissioning & Opening		
	Petrol Filling Station		
	Structure		
	PS140	Petrol Filling Station Roof	140%
	PS180	Concrete Plinth	120%
	E&M Works		



ID	Activity	Duration (Days)	Duration % Complete
	EPS140 T&C	12	0%
	Statutory Inspections and approvals		
	Administration Building		
	ADB-SI1010 Submit WWO46 Part IV for PD	0	100%
	ADB-SI1030 WSD inspection of Plumbing Installation (PL)	4	0%
	ADB-SI1070 Obtain Water Certificate and water supply connection - PL	4	0%
	ADB-SI1120 EMSD examines site acceptance report and acceptance	36	0%
	ADB-SI1130 Submit WWO46 part IV for CT plumbing works	0	0%
	ADB-SI1140 WSD inspection and water connection for CT plumbing works	6	0%
	Maintenance Depot		
	MD-SI1060 WSD inspection of Plumbing Installation (PL)	4	0%
	MD-SI1100 Obtain Water Certificate and water supply connection - PL	4	0%
	North Ventilation Building		
	NVB-SI1090 Submit WWO46 Part IV for PD	0	0%
	NVB-SI1110 WSD inspection of Plumbing Installation (PL)	4	0%
	NVB-SI1130 Water Samples Test	24	0%
	NVB-SI1140 Obtain Water Certificate and water supply connection - PL	4	0%
	Petrol Filling Station		
	PFS-SI1010 T&C of E&M System	6	100%
	PFS-SI1030 DG Inspection	18	0%
	PFS-SI1040 Obtain DG Licence	0	0%
	PFS-SI1060 FSD Inspection	42	100%
	PFS-SI1070 Obtain Fire Certificate	0	0%
	Underpass & Plant Room		
	VUP-SI1095 Obtain Water Certificate and water supply connection - FS	4	100%
	VUP-SI2000 Final Submission of Form FSI 314 / 501 to FSD	0	100%
	VUP-SI2010 FSD Inspection	42	0%
	VUP-SI2020 Obtain FSI Certificate FS 172	0	0%
	Toll Control Building & Toll Collector Subway		
	TCB-SI2000 Submit WWO46 Part IV for PD	0	0%
	TCB-SI2020 WSD inspection of Plumbing Installation (PL)	4	0%
	TCB-SI2030 WSD inspection of Plumbing Installation (FS)	4	100%
	TCB-SI2040 Water Samples Test	24	0%
	TCB-SI2045 Obtain Water Certificate and water supply connection - FS	4	0%
	TCB-SI2050 Obtain Water Certificate and water supply connection - PL	4	0%
	TCB-SI3010 EMSD examines site acceptance report and acceptance	36	0%
	TCB-SI3020 Submit WWO46 part IV for CT plumbing works	0	0%
	TCB-SI3030 WSD inspection and water connection for CT plumbing works	4	0%
	Satellite Control Building		
	SCB-SI1040 Submit WWO46 Part IV for PD	0	0%
	SCB-SI1060 WSD inspection of Plumbing Installation (PL)	4	0%
	SCB-SI1070 WSD inspection of Plumbing Installation (FS)	4	0%
	SCB-SI1080 Water Samples Test	24	0%
	SCB-SI1090 Obtain Water Certificate and water supply connection - FS	1	0%
	SCB-SI1100 Obtain Water Certificate and water supply connection - PL	1	0%
	SCB-SI1130 Obtain FSI Certificate FS 172	0	0%
	South Ventilation Building		
	SVB-SI1090 Submit WWO46 Part IV for PD	0	0%
	SVB-SI1110 WSD inspection of Plumbing Installation (PL)	4	0%
	SVB-SI1130 Water Samples Test	24	0%
	SVB-SI1140 Obtain Water Certificate and water supply connection - PL	4	0%
	SVB-SI2020 Obtain FSI Certificate FS 172	0	0%
	Tunnel		
	TNL-10TC2010 FSD inspection & re-inspection	42	30%
	TNL-10TC2020 Obtain Fire Certificate	0	0%
	Others Works for Road Opening		
	OW120 Hard Landscaping Works & Irrigation Systems	96	0%
	OW130 Street Furniture	96	0%
	OW135 All T&C Completed	0	0%
	OW140 Toll Collection System Test	70	0%



CONTRACT NO. HY2017/10

TM-CLKL NORTHERN CONNECTION TUNNEL BUILDINGS, E&M WORKS

THREE MONTHLY PROGRAMME AS OF 20 Jul 2020

P 5	Date	Revision	Checked	Approved
	20-Jul-20			

ID	Activity	Duration (Days)	Duration % Complete																													
				2018								2019												2020								
				May	Jun	Jul	Aug	Sep	Oct	Nov	Dec	Jan	Feb	Mar	Apr	May	Jun	Jul	Aug	Sep	Oct	Nov	Dec	Jan	Feb	Mar	Apr	May	Jun	Jul	Aug	Sep
<div><div></div><div></div><div></div></div>	OW145	ELV System Test	70	32%																												
	OW155	Interfacing T&C with C5	70	80%																												