

Appendix L

Cumulative Statistics on Exceedances, Complaints, Notifications of Summons and Successful Prosecutions

Table L1 *Cumulative Statistics on Exceedances*

Parameters	Level of Exceedance	Total No. recorded in this reporting month	Total No. recorded since Contract commencement
1-hr TSP	Action	1	120
	Limit	0	15
24-hr TSP	Action	0	12
	Limit	0	4
Water Quality	Action	0	167
	Limit	0	19
Impact Dolphin Monitoring	Action	0	11
	Limit	0	19

Table L2 *Cumulative Statistics on Complaints, Notifications of Summons and Successful Prosecutions*

Reporting Period	Cumulative Statistics		
	Complaints	Notifications of Summons	Successful Prosecutions
This Reporting Month (December 2020)	0	0	0
Total No. received since Contract commencement	17	1	0

Email
message

Environmental
Resources
Management

To Ramboll Hong Kong, Limited (ENPO)

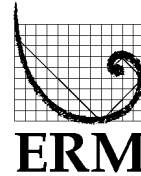
From ERM- Hong Kong, Limited

Ref/Project number Contract No. HY/2012/08 Tuen Mun–Chek Lap
Kok Link–Northern Connection Sub-sea Tunnel
Section

Subject Notification of Exceedance for Air Quality
Impact Monitoring

Date 22 December 2020

2507, 25/F One Harbourfront
18 Tak Fung Street
Hunghom, Kowloon
Hong Kong
Telephone: (852) 2271 3000
Facsimile: (852) 2723 5660



Dear Sir or Madam,

Please find attached the Notification of Exceedance (NOE) of the following
Log no.:

Action Level Exceedances:
0212330_10December2020_1hrTSP_Station ASR5

Three Action Level Exceedances were recorded on 10 December 2020.

Regards,

Dr Jasmine Ng
Environmental Team Leader

CONFIDENTIALITY NOTICE

This facsimile transmission is intended only for the use of the addressee and is confidential. If you are not the addressee it may be unlawful for you to read, copy, distribute, disclose or otherwise use the information in this facsimile. If you are not the intended recipient, please telephone or fax us.



ERM-Hong Kong, Limited

CONTRACT NO. HY/2012/08
TUEN MUN – CHEK LAP KOK LINK –
NORTHERN CONNECTION SUB-SEA TUNNEL SECTION

Air Quality Impact Monitoring
Notification of Exceedance

Log No.	<u>Action Level Exceedance</u> 0212330_10December2020_1hrTSP_Station ASR5 [Total No. of Exceedances = 1]	
Date	10 December 2020 (Measured) 22 December 2020 (Laboratory results received by ERM)	
Monitoring Station	ASR5	
Parameter(s) with Exceedance(s)	1-hr TSP	
Action Levels	24-hr TSP ($\mu\text{g}/\text{m}^3$)	ASR1 = 213 ASR5 = 238 AQMS1 = 213 ASR6 = 238 ASR10 = 214
	1-hr TSP ($\mu\text{g}/\text{m}^3$)	ASR1 = 331 ASR5 = 340 AQMS1 = 335 ASR6 = 338 ASR10 = 337
Limit Levels	1-hr TSP ($\mu\text{g}/\text{m}^3$)	500
	24-hr TSP ($\mu\text{g}/\text{m}^3$)	260
Measured Levels	Action Level Exceedance for 1-hr TSP is observed at ASR5 ($348 \mu\text{g}/\text{m}^3$) between sampling period 9:32 and 10:32 on 10 December 2020.	
Works Undertaken (at the time of monitoring event)	On 10 December 2020, demolition of CLP substation was conducted.	
Possible Reason for Action or Limit Level Exceedance(s)	The exceedance is unlikely to be due to this Contract, in view of the following: <ul style="list-style-type: none"> With reference to the recorded wind direction (vary between 13° and 24°) and wind speed (1.3 m/s), the wind was mainly from north-easterly direction. Haze was observed during the sampling time. Dust suppression measures were implemented properly on site. Water spraying was applied during rock/cement breaking to prevent dust (refer to <i>Annex A</i>). Based on the above, the exceedance is unlikely to be due to this Contract.	
Actions Taken / To Be Taken	The Contractor has been reminded to implement the required mitigation measures as per the EP, approved EIA and Updated EM&A Manual including watering to maintain all exposed road surfaces and dust sources wet, use of sprinklers for water spraying, covering the materials having the potential to create dust by clean tarpaulin, use of water truck and watering on all exposed soil within the Contract site throughout the construction period.	
Remarks	The monitoring results, wind data and the locations of air quality monitoring stations are attached (<i>Annex B</i>).	

Annex A

Watering Photo



Photo 1 - Water spraying was applied during rock/cement breaking to prevent dust

Annex B

Results of Air Quality Monitoring, Wind Data & Locations of Air Quality Monitoring Stations

Air quality monitoring results on 10/12/2020								
Project	Contract	Date	Station	Weather	Start time	Parameters	Results	Unit
TMCLKL	HY/2012/08	2020-12-10	ASR10	Hazy	8:08:00	1-hour TSP	126	ug/m3
TMCLKL	HY/2012/08	2020-12-10	ASR10	Hazy	9:10:00	1-hour TSP	84	ug/m3
TMCLKL	HY/2012/08	2020-12-10	ASR10	Hazy	10:12:00	1-hour TSP	128	ug/m3
TMCLKL	HY/2012/08	2020-12-10	ASR6	Hazy	8:18:00	1-hour TSP	185	ug/m3
TMCLKL	HY/2012/08	2020-12-10	ASR6	Hazy	9:20:00	1-hour TSP	217	ug/m3
TMCLKL	HY/2012/08	2020-12-10	ASR6	Hazy	10:22:00	1-hour TSP	131	ug/m3
TMCLKL	HY/2012/08	2020-12-10	ASR5	Hazy	8:30:00	1-hour TSP	255	ug/m3
TMCLKL	HY/2012/08	2020-12-10	ASR5	Hazy	9:32:00	1-hour TSP	348	ug/m3
TMCLKL	HY/2012/08	2020-12-10	ASR5	Hazy	10:34:00	1-hour TSP	191	ug/m3
TMCLKL	HY/2012/08	2020-12-10	ASR1	Hazy	8:42:00	1-hour TSP	140	ug/m3
TMCLKL	HY/2012/08	2020-12-10	ASR1	Hazy	9:44:00	1-hour TSP	162	ug/m3
TMCLKL	HY/2012/08	2020-12-10	ASR1	Hazy	10:46:00	1-hour TSP	99	ug/m3
TMCLKL	HY/2012/08	2020-12-10	AQMS1	Hazy	8:53:00	1-hour TSP	110	ug/m3
TMCLKL	HY/2012/08	2020-12-10	AQMS1	Hazy	9:55:00	1-hour TSP	114	ug/m3
TMCLKL	HY/2012/08	2020-12-10	AQMS1	Hazy	10:57:00	1-hour TSP	105	ug/m3
TMCLKL	HY/2012/08	2020-12-10	AQMS1	Hazy	11:59:00	24-hour TSP	87	ug/m3
TMCLKL	HY/2012/08	2020-12-10	ASR1	Hazy	11:48:00	24-hour TSP	114	ug/m3
TMCLKL	HY/2012/08	2020-12-10	ASR10	Hazy	11:14:00	24-hour TSP	72	ug/m3
TMCLKL	HY/2012/08	2020-12-10	ASR5	Hazy	11:36:00	24-hour TSP	166	ug/m3
TMCLKL	HY/2012/08	2020-12-10	ASR6	Hazy	11:24:00	24-hour TSP	110	ug/m3

Action level exceedance

Limit level exceedance

Meteorological Data for Impact Monitoring in the reporting period			
Date (yy-mm-dd)	Time (24hrs)	Average of Wind Speed (m/s)	Average of Wind Direction(degree)
20/12/10	0:00	0.4	102
20/12/10	1:00	0.4	29
20/12/10	2:00	0.4	20
20/12/10	3:00	0.4	30
20/12/10	4:00	0	97
20/12/10	5:00	0.9	351
20/12/10	6:00	0.4	335
20/12/10	7:00	0.4	49
20/12/10	8:00	1.3	12
20/12/10	9:00	1.3	24
20/12/10	10:00	1.3	13
20/12/10	11:00	1.3	19
20/12/10	12:00	1.3	21
20/12/10	13:00	0.9	202
20/12/10	14:00	1.3	192
20/12/10	15:00	1.3	261
20/12/10	16:00	0.9	279
20/12/10	17:00	0.4	96
20/12/10	18:00	0.4	96
20/12/10	19:00	0	85
20/12/10	20:00	0.4	78
20/12/10	21:00	0.9	38
20/12/10	22:00	1.3	101
20/12/10	23:00	1.8	82
20/12/11	0:00	1.8	91
20/12/11	1:00	0.4	87
20/12/11	2:00	0.9	38
20/12/11	3:00	0.9	13
20/12/11	4:00	0.4	16
20/12/11	5:00	0	102
20/12/11	6:00	0	114
20/12/11	7:00	0	103
20/12/11	8:00	0.4	135
20/12/11	9:00	1.3	141
20/12/11	10:00	0.4	130
20/12/11	11:00	0.9	141
20/12/11	12:00	1.3	206
20/12/11	13:00	0.9	203
20/12/11	14:00	1.8	201
20/12/11	15:00	1.3	207
20/12/11	16:00	0.4	276
20/12/11	17:00	0.9	269
20/12/11	18:00	0.4	267
20/12/11	19:00	0.4	274
20/12/11	20:00	0	58
20/12/11	21:00	0	158
20/12/11	22:00	0.4	290
20/12/11	23:00	0.4	306

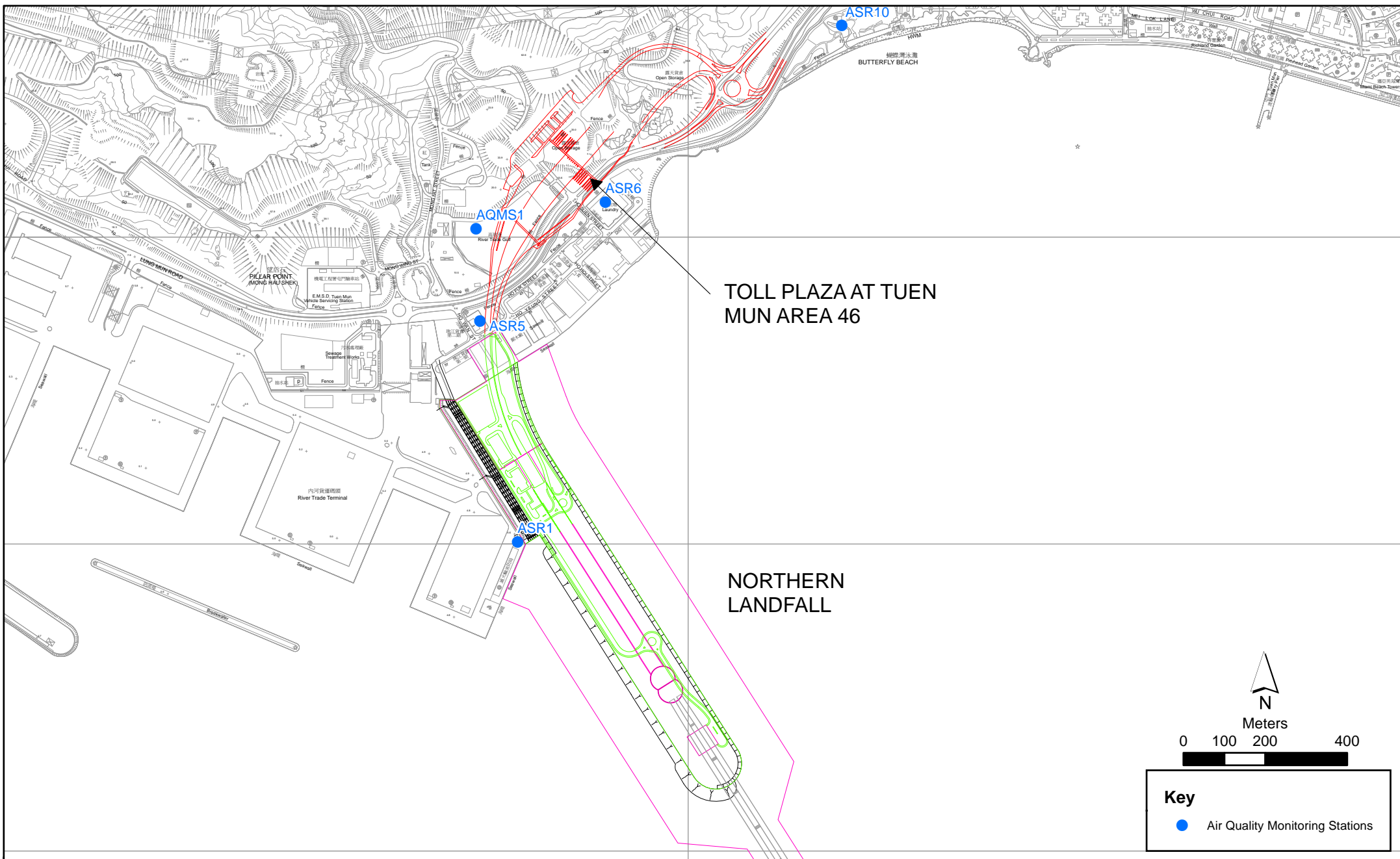


Figure 2.1b

Air Quality Monitoring Stations for the Enhanced TSP Monitoring

File: T:\GIS\CONTRACT\0212330\Mxd\0212330_ASR_for_Enhanced_TSP_monitoring.mxd
Date: 21/2/2014

Environmental
Resources
Management

