

Table K1 ***Cumulative Statistics on Exceedances***

Parameters	Level of Exceedance	Total No. recorded in this reporting month	Total No. recorded since project commencement
1-hr TSP	Action	4	44
	Limit	0	3
24-hr TSP	Action	1	6
	Limit	0	1
Water Quality	Action	0	6
	Limit	0	1
Impact Dolphin Monitoring	Action	0	9
	Limit	0	10

Table K2 ***Cumulative Statistics on Complaints, Notifications of Summons and Successful Prosecutions***

Reporting Period	Cumulative Statistics		
	Complaints	Notifications of Summons	Successful Prosecutions
This Reporting Month (October 2017)	1	0	0
Total No. received since project commencement	15	1	0

Email
message

Environmental
Resources
Management

To Ramboll Environ - Hong Kong, Limited (ENPO)

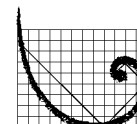
From ERM- Hong Kong, Limited

Ref/Project number Contract No. HY/2012/08 Tuen Mun-Chek Lap
Kok Link-Northern Connection Sub-sea Tunnel
Section

Subject Notification of Exceedance for Air Quality
Impact Monitoring

Date 12 September 2017

16/F Berkshire House,
25 Westlands Road
Quarry Bay, Hong Kong
Telephone: (852) 2271 3113
Facsimile: (852) 2723 5660
E-mail: jovy.tam@erm.com



ERM

Dear Sir or Madam,

Please find attached the Notification of Exceedance (NOE) of the following
Log no.:

0212330_12September2017_1hrTSP_Station ASR1
0212330_12September2017_1hrTSP_Station ASR1
0212330_12September2017_1hrTSP_Station ASR1
0212330_12September2017_1hrTSP_Station ASR5

Three Action Level and one Limit Level Exceedances were recorded on 12
September 2017.

Regards,



Mr Jovy Tam
Environmental Team Leader

CONFIDENTIALITY NOTICE

This facsimile transmission is intended only for the use of the addressee and is confidential. If you are not the addressee it may be unlawful for you to read, copy, distribute, disclose or otherwise use the information in this facsimile. If you are not the intended recipient, please telephone or fax us.



ERM-Hong Kong, Limited

CONTRACT NO. HY/2012/08
TUEN MUN – CHEK LAP KOK LINK –
NORTHERN CONNECTION SUB-SEA TUNNEL SECTION

Air Quality Impact Monitoring
Notification of Exceedance

Log No.	0212330_12September2017_1hrTSP_Station ASR1 0212330_12September2017_1hrTSP_Station ASR1 0212330_12September2017_1hrTSP_Station ASR1 0212330_12September2017_1hrTSP_Station ASR5 [Total No. of Exceedances = 4]	
Date	12 September 2017 (Measured) 21 September 2017 (Laboratory results received by ERM)	
Monitoring Station	ASR1, ASR5, ASR6, ASR10 and AQMS1	
Parameter(s) with Exceedance(s)	1-hr TSP	
Action Levels	24-hr TSP ($\mu\text{g}/\text{m}^3$)	ASR1 = 213 ASR5 = 238 AQMS1 = 213 ASR6 = 238 ASR10 = 214
	1-hr TSP ($\mu\text{g}/\text{m}^3$)	ASR1 = 331 ASR5 = 340 AQMS1 = 335 ASR6 = 338 ASR10 = 337
Limit Levels	1-hr TSP ($\mu\text{g}/\text{m}^3$)	500
	24-hr TSP ($\mu\text{g}/\text{m}^3$)	260
Measured Levels	Action Level Exceedance for 1-hr TSP is observed at ASR1 ($332 \mu\text{g}/\text{m}^3$) during 1338 - 1438 hrs. Action Level Exceedance for 1-hr TSP is observed at ASR1 ($413 \mu\text{g}/\text{m}^3$) during 1542 - 1642 hrs. Action Level Exceedance for 1-hr TSP is observed at ASR5 ($367 \mu\text{g}/\text{m}^3$) during 1327 - 1427 hrs. Limit Level Exceedance for 1-hr TSP is observed at ASR1 ($545 \mu\text{g}/\text{m}^3$) during 1440 - 1540 hrs.	
Works Undertaken (at the time of monitoring event)	On 12 September 2017, box culvert extension was carried out at Works Area Portion N-A and Construction of Ventilation Building at Portion N-C.	

Possible Reason for Action or Limit Level Exceedance(s)	<p>The exceedances are unlikely to be due to the Project, in view of the following:</p> <ul style="list-style-type: none"> • According to the construction information provided by the Contractor, the majority of construction works on 12 September 2017 were box culvert extension at Works Area Portion N-A and Construction of Ventilation Building at Portions N-C. During the period of the land-based construction works, the Contractor has implemented the required mitigation measures as per the EP, approved EIA and Updated EM&A Manual (e.g. water spraying by water trucks on exposed soil within the Project site and associated work areas; use of wheel washing facilities). • Whilst exceedances of Action Level and Limit Level were observed at ASR1 and ASR5, the 24-hr TSP level at the monitoring station (ASR1 = 138 µg/m³, ASR5 = 97µg/m³) on 12 September 2017 were in compliance with the Action and Limit Levels. • As stated in the EIA report (Section 4.2.3), the background TSP level of Tuen Mun is higher than the other region of Hong Kong, thus the exceedances may be also contributed cumulatively by the other construction works / traffic within the Tuen Mun Area rather than causing by the construction works of the Project. <p>Based on the above, the exceedances are unlikely to be due to the project.</p>
Actions Taken/ To Be Taken	<p>Based on the contractor's photo record on 12 September 2017, no dust nuisance was recorded at the Northern Landfall and activities conducted in this Contract's work have strictly followed the requirements stated in the EP (EP-354/2009/D). Site inspection was carried out on 27 September 2017 to audit proper implementation of mitigation measures. In addition, the Contractor has implemented the required mitigation measures as per the EP, approved EIA and Updated EM&A Manual including watering to maintain all exposed road surfaces and dust sources wet, use of wheel washing facilities, use of sprinklers for water spraying, materials having the potential to create dust covered by a clean tarpaulin, use of water truck and watering on all exposed soil within the Project site) throughout the construction period, no additional mitigation is deemed necessary. Inspection on the air quality monitoring stations was also carried out on 6 October 2017. No dust nuisance was observed. Photo record is provided in <i>Annex A</i>. Weekly water spraying record is also provided. The Enhanced TSP Monitoring has commenced on 24 October 2014, the ET will monitor for future trends in exceedances.</p>
Remarks	<p>The monitoring results and the locations of air quality monitoring stations are attached.</p>

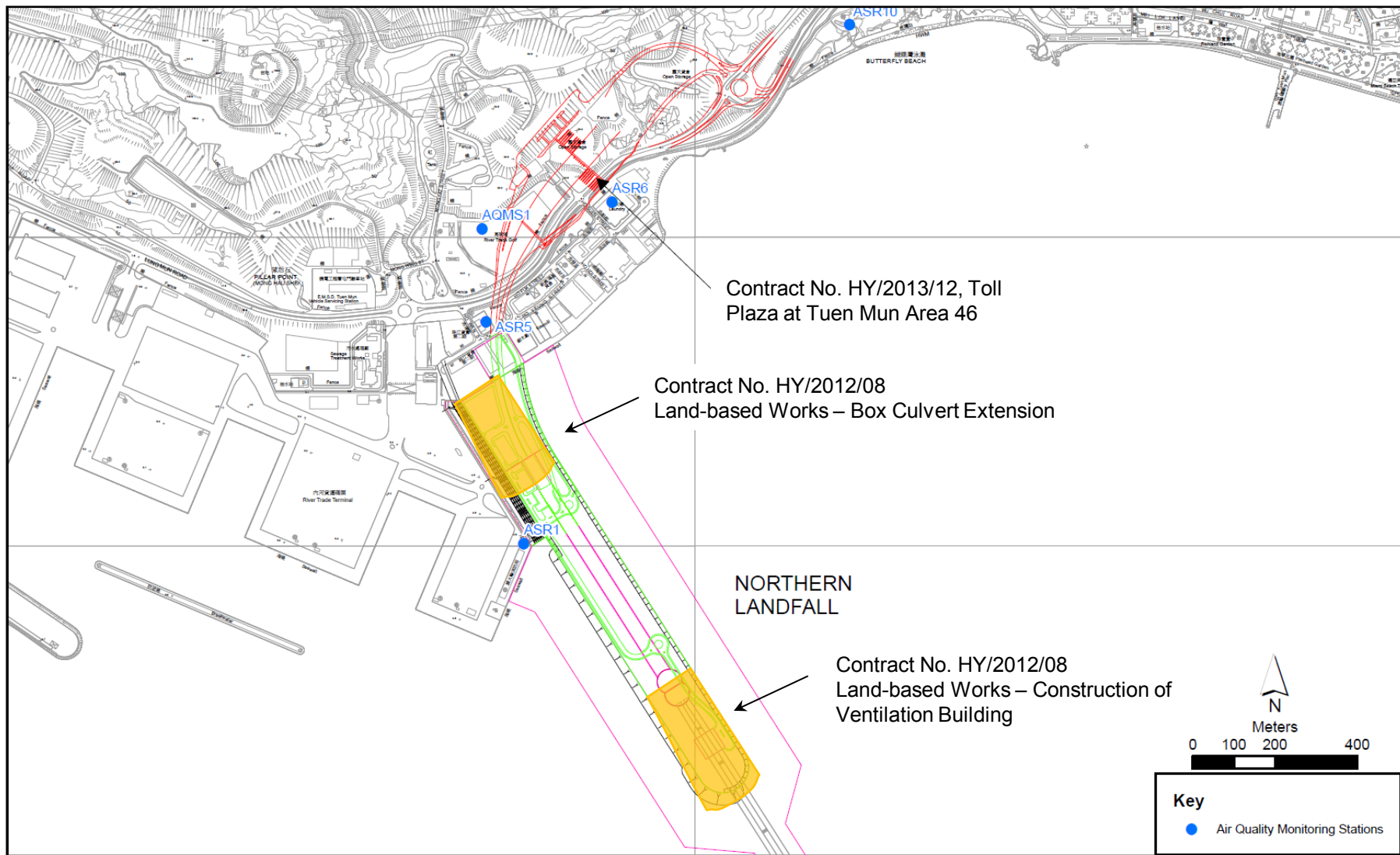


Figure 1

Indicative Construction Works Area on 12 September 2017



Annex A Photo Records provided by the Contractor

*Note: Photos taken on 12/9/2017



Water spraying was applied frequently during dry conditions.(Works Area Portion N-B)



No dust nuisance was observed. (Works Area Portion N-B)



Annex A Photo Records provided by the Contractor

*Note: Photos taken on 12/9/2017



Water spraying was applied frequently during dry conditions. (Works Area Portion N-A)



Water spraying was applied frequently during dry conditions. (Works Area Portion N-A)

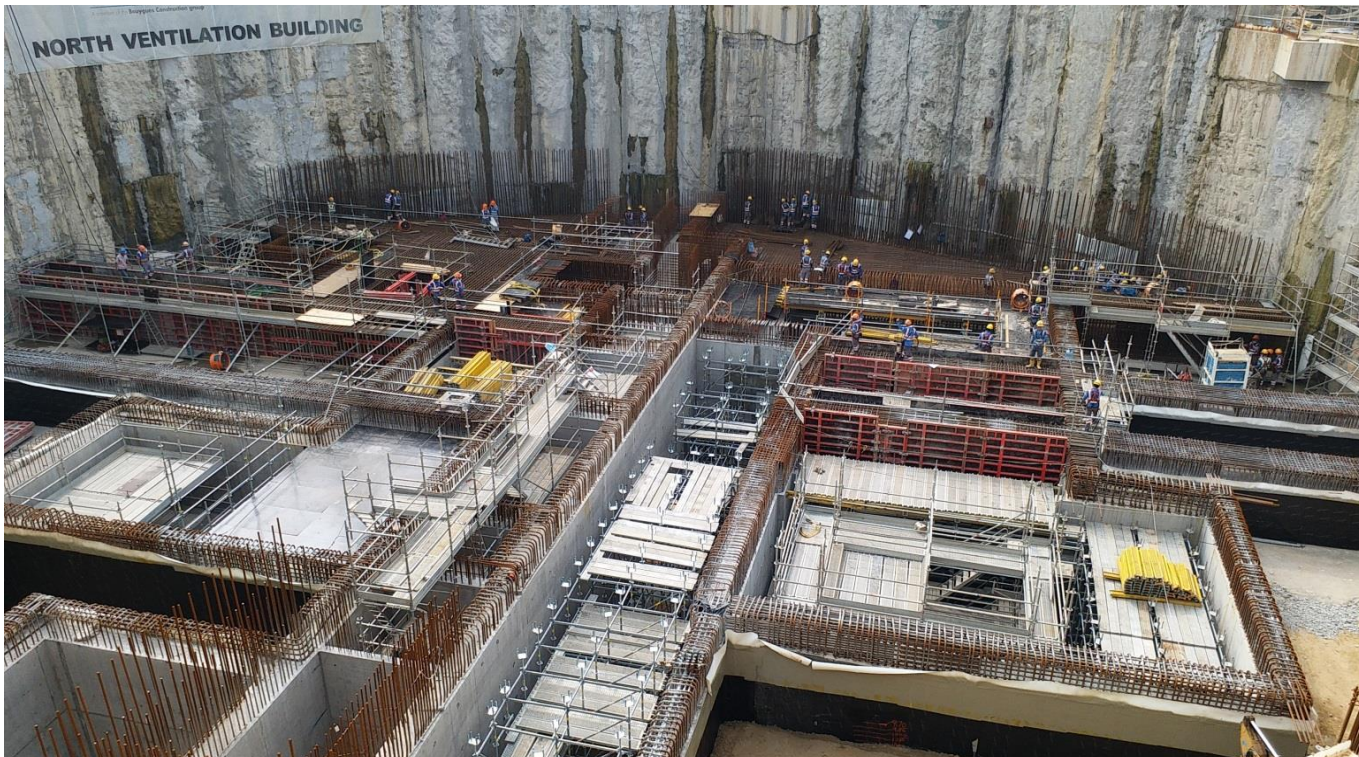


Annex A Photo Records provided by the Contractor

*Note: Photos taken on 12/9/2017



Box Culvert Extension. (Works Area Portion N-A)



Construction of Ventilation Building (Works Area Portion N-C)



Annex A Photo Records during site inspection

*Note: Photos taken on 27/9/2017



Water spraying was applied frequently during dry conditions. (Works Area Portion N-A)



Exposed soil surface are covered by tarpaulin sheets to prevent dust nuisance. (Works Area Portion N-A)

Site Location 地盤位置:

Date 日期:

Northern Landfill

11th Sep. 2017

to 至

17th Sep. 2017

	Time 時間	Monday 星期一	Tuesday 星期二	Wednesday 星期三	Thursday 星期四	Friday 星期五	Saturday 星期六	Sunday 星期日
1	8:00 - 8:45	/	/	/	/	/	/	/
2	8:45 - 9:30	/	/	/	/	/	/	/
3	9:30 - 10:15	/	/	/	/	/	/	/
4	10:15 - 11:00	/	/	/	/	/	/	/
5	11:00 - 11:45	/	/	/	/	/	/	/
6	11:45 - 12:30	/	/	/	/	/	/	/
7	12:30 - 13:15	/	/	/	/	/	/	/
8	13:15 - 14:00	/	/	/	/	/	/	/
9	14:00 - 14:45	/	/	/	/	/	/	/
10	14:45 - 15:30	/	/	/	/	/	/	/
11	15:30 - 16:45	/	/	/	/	/	/	/
12	16:45 - 17:30	/	/	/	/	/	/	/
	Verified by Site Foreman 地盤科文簽署確認	/	/	/	/	/	/	/

Night shift 夜間工作 (if necessary 如需要)

	17:30 - 19:00						
	19:00 - 20:30						
	20:30 - 22:00						
	22:00 - 23:00						

*Please - tick (✓) in the box if complete the spraying of water.
circle (O) in the box if it is raining.

*如果 - 已經完成灑水, 請於方格內加上剔號(✓)。
是下雨天, 請於方格內加上圓圈(O)。

Remarks:

- Pursuant to EP Clause 3.15, the Permit Holder shall undertake watering at least 12 times per day on all exposed soil within the Project site and associated work areas in Tuen Mun area throughout the construction phase.
- Spraying position includes the main haul road, open area, slopes, stockpiles and any other dusty materials.
- If it is raining, no water spraying is needed.
- The no of spraying will be increased due to site condition.

備註:

- 根據環境許可證 3.15 條例, 在整個施工階段內, 許可證持有人須每天至少 12 次在屯門區項目工地和相關的工作區域內的所有暴露土壤灑水。
- 灑水位置包括主要運輸道路, 空曠地帶, 斜坡, 存料堆, 以及任何其他產生塵埃物料。
- 當下雨時, 地盤將不需要灑水。
- 如果地盤情況更改或有需要時, 灑水次數會相應增加。

TMCLKL	HY/2012/08	12/9/2017	AQMS1	Sunny	13:49	1-hour TSP	277	ug/m3
TMCLKL	HY/2012/08	12/9/2017	AQMS1	Sunny	14:51	1-hour TSP	209	ug/m3
TMCLKL	HY/2012/08	12/9/2017	AQMS1	Sunny	15:53	1-hour TSP	139	ug/m3
TMCLKL	HY/2012/08	12/9/2017	ASR1	Sunny	13:38	1-hour TSP	332	ug/m3
TMCLKL	HY/2012/08	12/9/2017	ASR1	Sunny	14:40	1-hour TSP	545	ug/m3
TMCLKL	HY/2012/08	12/9/2017	ASR1	Sunny	15:42	1-hour TSP	413	ug/m3
TMCLKL	HY/2012/08	12/9/2017	ASR10	Sunny	13:02	1-hour TSP	165	ug/m3
TMCLKL	HY/2012/08	12/9/2017	ASR10	Sunny	14:04	1-hour TSP	240	ug/m3
TMCLKL	HY/2012/08	12/9/2017	ASR10	Sunny	15:06	1-hour TSP	186	ug/m3
TMCLKL	HY/2012/08	12/9/2017	ASR5	Sunny	13:27	1-hour TSP	367	ug/m3
TMCLKL	HY/2012/08	12/9/2017	ASR5	Sunny	14:29	1-hour TSP	308	ug/m3
TMCLKL	HY/2012/08	12/9/2017	ASR5	Sunny	15:31	1-hour TSP	253	ug/m3
TMCLKL	HY/2012/08	12/9/2017	ASR6	Sunny	13:15	1-hour TSP	285	ug/m3
TMCLKL	HY/2012/08	12/9/2017	ASR6	Sunny	14:17	1-hour TSP	299	ug/m3
TMCLKL	HY/2012/08	12/9/2017	ASR6	Sunny	15:19	1-hour TSP	262	ug/m3

Email
message

Environmental
Resources
Management

To Ramboll Environ - Hong Kong, Limited (ENPO)

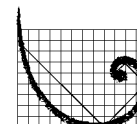
From ERM- Hong Kong, Limited

Ref/Project number Contract No. HY/2012/08 Tuen Mun-Chek Lap
Kok Link-Northern Connection Sub-sea Tunnel
Section

Subject Notification of Exceedance for Air Quality
Impact Monitoring

Date 18 September 2017

16/F Berkshire House,
25 Westlands Road
Quarry Bay, Hong Kong
Telephone: (852) 2271 3113
Facsimile: (852) 2723 5660
E-mail: jovy.tam@erm.com



ERM

Dear Sir or Madam,

Please find attached the Notification of Exceedance (NOE) of the following
Log no.:

0212330_18September2017_1hrTSP_Station AQMS1

One Action Level Exceedance was recorded on 18 September 2017.

Regards,

Mr Jovy Tam
Environmental Team Leader

CONFIDENTIALITY NOTICE

This facsimile transmission is intended only for the use of the addressee and is confidential. If you are not the addressee it may be unlawful for you to read, copy, distribute, disclose or otherwise use the information in this facsimile. If you are not the intended recipient, please telephone or fax us.



ERM-Hong Kong, Limited

CONTRACT NO. HY/2012/08 TUEN MUN – CHEK LAP KOK LINK – NORTHERN CONNECTION SUB-SEA TUNNEL SECTION

Air Quality Impact Monitoring Notification of Exceedance

Log No.	0212330_18September2017_1hrTSP_Station AQMS1 [Total No. of Exceedances = 1]	
Date	18 September 2017 (Measured) 29 September 2017 (Laboratory results received by ERM)	
Monitoring Station	ASR1, ASR5, ASR6, ASR10 and AQMS1	
Parameter(s) with Exceedance(s)	1-hr TSP	
Action Levels	24-hr TSP ($\mu\text{g}/\text{m}^3$)	ASR1 = 213 ASR5 = 238 AQMS1 = 213 ASR6 = 238 ASR10 = 214
	1-hr TSP ($\mu\text{g}/\text{m}^3$)	ASR1 = 331 ASR5 = 340 AQMS1 = 335 ASR6 = 338 ASR10 = 337
Limit Levels	1-hr TSP ($\mu\text{g}/\text{m}^3$)	500
	24-hr TSP ($\mu\text{g}/\text{m}^3$)	260
Measured Levels	Action Level Exceedance for 1-hr TSP is observed at AQMS1 ($473 \mu\text{g}/\text{m}^3$) during 1352 - 1452 hrs.	
Works Undertaken (at the time of monitoring event)	On 18 September 2017, box culvert extension was carried out at Works Area Portion N-A and Construction of Ventilation Building at Portion N-C.	
Possible Reason for Action or Limit Level Exceedance(s)	<p>The exceedance is unlikely to be due to the Project, in view of the following:</p> <ul style="list-style-type: none"> According to the construction information provided by the Contractor, the majority of construction works on 18 September 2017 were box culvert extension at Works Area Portion N-A and Construction of Ventilation Building at Portions N-C. During the period of the land-based construction works, the Contractor has implemented the required mitigation measures as per the EP, approved EIA and Updated EM&A Manual (e.g. water spraying by water trucks on exposed soil within the Project site and associated work areas; use of wheel washing facilities). Whilst exceedances of Action Level was observed at AQMS1, the 24-hr TSP level at the monitoring station (AQMS1 = $92 \mu\text{g}/\text{m}^3$) on 18 September 2017 were in compliance with the Action and Limit Levels. As stated in the EIA report (Section 4.2.3), the background TSP level of Tuen Mun is higher than the other region of Hong Kong, thus the exceedances may be also contributed cumulatively by the other construction works / traffic within the Tuen Mun Area rather than causing by the construction works of the Project. <p>Based on the above, the exceedance is unlikely to be due to the project.</p>	

Actions Taken/ To Be Taken	<p>Based on the contractor's photo record on 18 September 2017, no dust nuisance was recorded at the Northern Landfall and activities conducted in this Contract's work have strictly followed the requirements stated in the EP (EP-354/2009/D). Site inspection was carried out on 27 September 2017 audit proper implementation of mitigation measures. In addition, the Contractor has implemented the required mitigation measures as per the EP, approved EIA and Updated EM&A Manual including watering to maintain all exposed road surfaces and dust sources wet, use of wheel washing facilities, use of sprinklers for water spraying, materials having the potential to create dust covered by a clean tarpaulin, use of water truck and watering on all exposed soil within the Project site) throughout the construction period, no additional mitigation is deemed necessary. Inspection on the air quality monitoring stations was also carried out on 6 October 2017. No dust nuisance was observed. Photo record is provided in <i>Annex A</i>. Weekly water spraying record is also provided. The Enhanced TSP Monitoring has commenced on 24 October 2014, the ET will monitor for future trends in exceedances.</p>
Remarks	<p>The monitoring results and the locations of air quality monitoring stations are attached.</p>

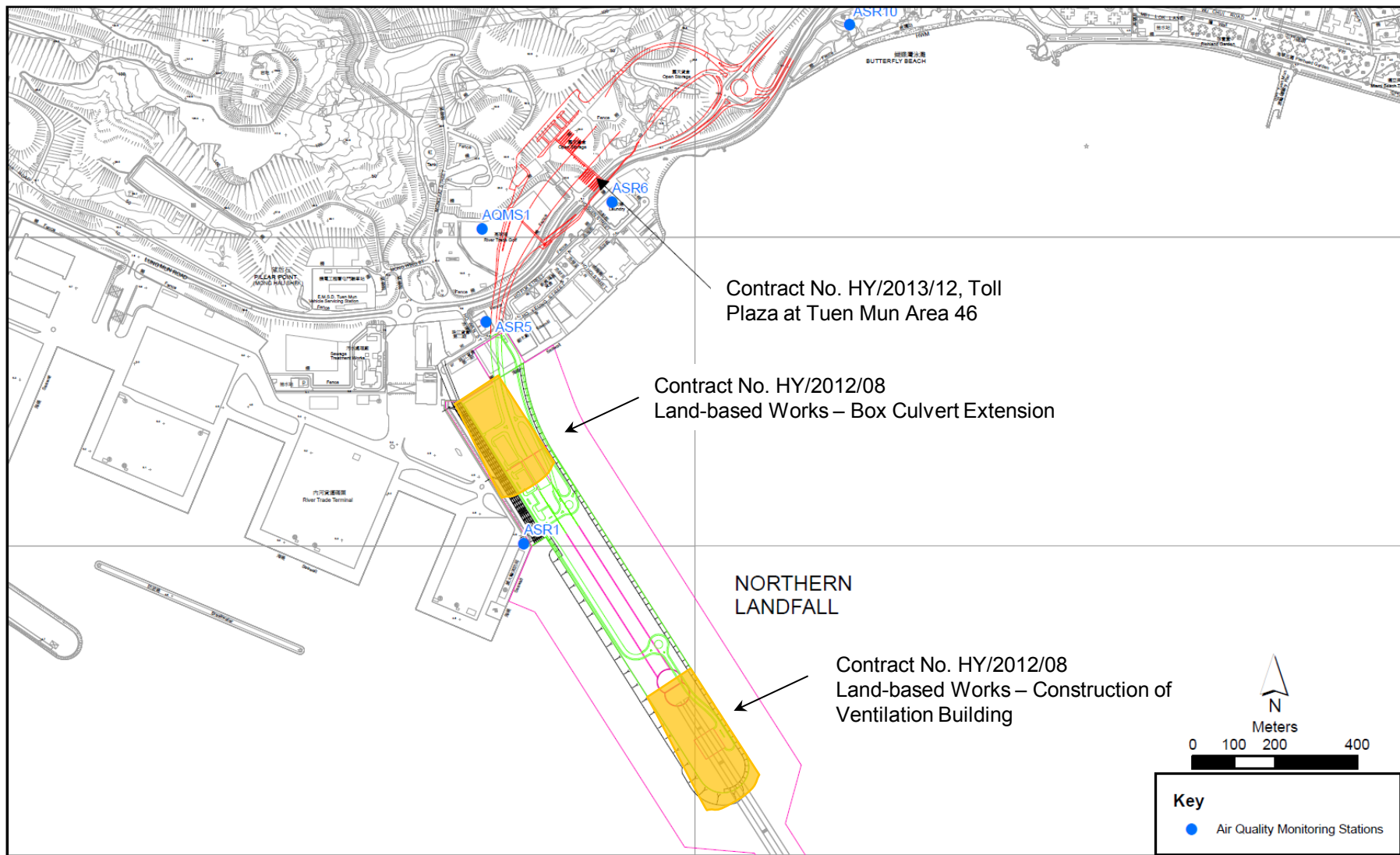


Figure 1

Indicative Construction Works Area on 18 September 2017



Annex A Photo Records provided by the Contractor

*Note: Photos taken on 18/9/2017



Water spraying was applied frequently during dry conditions.(Works Area Portion N-B)



No dust nuisance was observed. (Works Area Portion N-B)



Annex A Photo Records provided by the Contractor

*Note: Photos taken on 18/9/2017



Water spraying was applied frequently during dry conditions. (Works Area Portion N-A)



Use of sprinklers for water spraying,. (Works Area Portion N-C)

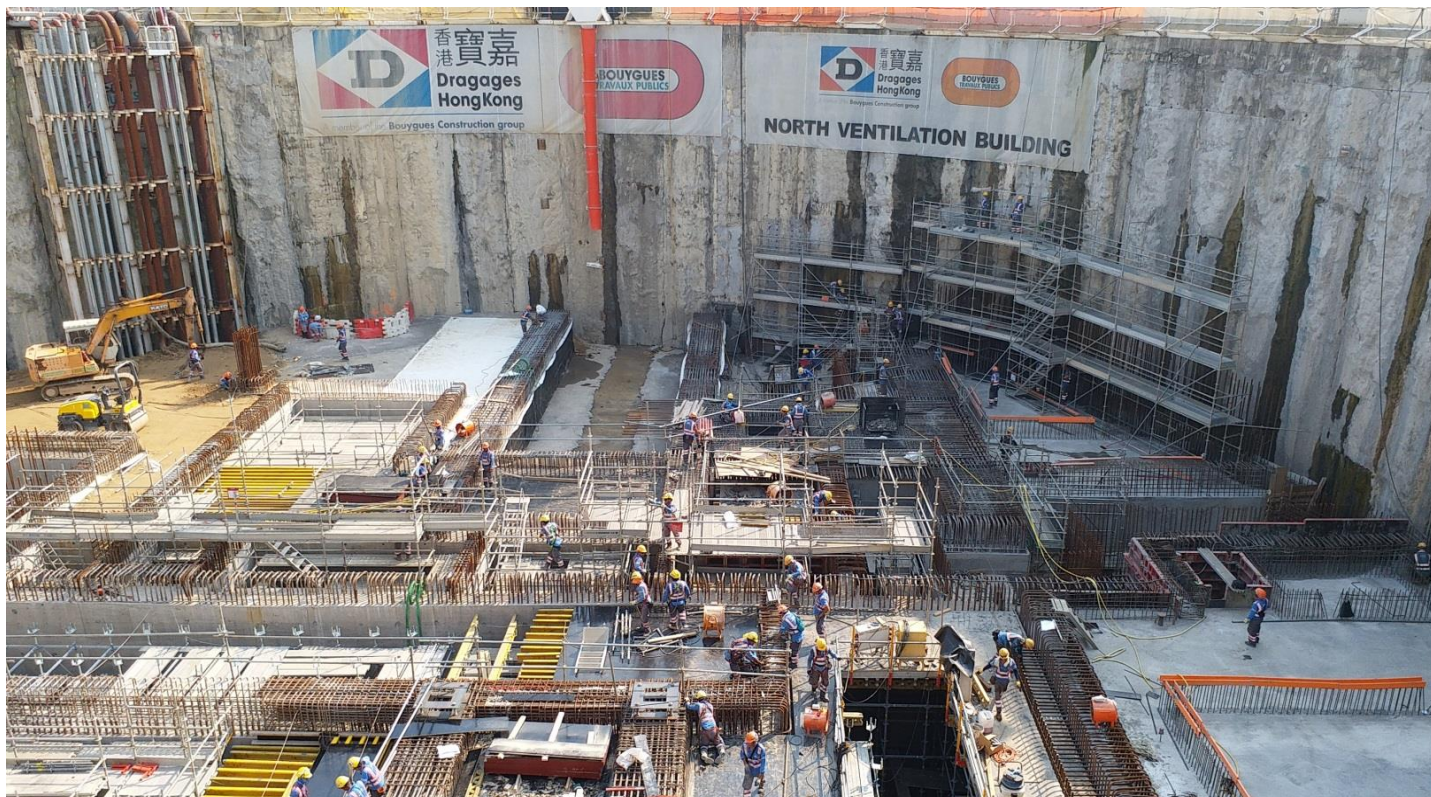


Annex A Photo Records provided by the Contractor

*Note: Photos taken on 18/9/2017



Box Culvert Extension. (Works Area Portion N-A)



Construction of Ventilation Building. (Works Area Portion N-C)



Annex A Photo Records during site inspection

*Note: Photos taken on 27/9/2017



Water spraying was applied frequently during dry conditions. (Works Area Portion N-A)



Exposed soil surface are covered by tarpaulin sheets to prevent dust nuisance. (Works Area Portion N-A)

Site Location 地盤位置:		<u>Northern Landfill</u>						
Date 日期:		<u>18th Sep - 2017</u> to <u>24th Sep - 2017</u>						
	Time 時間	Monday 星期一	Tuesday 星期二	Wednesday 星期三	Thursday 星期四	Friday 星期五	Saturday 星期六	Sunday 星期日
1	8:00 - 8:45	/	/	/	/	/	/	/
2	8:45 - 9:30	/	/	/	/	/	/	/
3	9:30 - 10:15	/	/	/	/	/	/	/
4	10:15 - 11:00	/	/	/	/	/	/	/
5	11:00 - 11:45	/	/	/	/	/	/	/
6	11:45 - 12:30	/	/	/	/	/	/	/
7	12:30 - 13:15	/	/	/	/	/	/	/
8	13:15 - 14:00	/	/	/	/	/	/	/
9	14:00 - 14:45	/	/	/	/	/	/	/
10	14:45 - 15:30	/	/	/	/	/	/	/
11	15:30 - 16:45	/	/	/	/	/	/	/
12	16:45 - 17:30	/	/	/	/	/	/	/
Verified by Site Foreman 地盤科文簽署確認		/	/	/	/	/	/	/

Night shift 夜間工作 (if necessary 如需要)								
	17:30 - 19:00							
	19:00 - 20:30							
	20:30 - 22:00							
	22:00 - 23:00							

*Please - tick (✓) in the box if complete the spraying of water.
circle (O) in the box if it is raining.

*如果 - 已經完成灑水, 請於方格內加上剔號(✓)。
是下雨天, 請於方格內加上圓圈(O)。

Remarks:

- Pursuant to EP Clause 3.15, the Permit Holder shall undertake watering at least 12 times per day on all exposed soil within the Project site and associated work areas in Tuen Mun area throughout the construction phase.
- Spraying position includes the main haul road, open area, slopes, stockpiles and any other dusty materials.
- If it is raining, no water spraying is needed.
- The no of spraying will be increased due to site condition.

備註:

- 根據環境許可證 3.15 條例, 在整個施工階段內, 許可證持有人須每天至少 12 次在屯門區項目工地和相關的工作區域內的所有暴露土壤灑水。
- 灑水位置包括主要運輸道路, 空曠地帶, 斜坡, 存料堆, 以及任何其他產生塵埃物料。
- 當下雨時, 地盤將不需要灑水。
- 如果地盤情況更改或有需要時, 灑水次數會相應增加。

TMCLKL	HY/2012/08	18/9/2017	AQMS1	Sunny	13:52	1-hour TSP	473	ug/m3
TMCLKL	HY/2012/08	18/9/2017	AQMS1	Sunny	14:54	1-hour TSP	312	ug/m3
TMCLKL	HY/2012/08	18/9/2017	AQMS1	Sunny	15:56	1-hour TSP	170	ug/m3
TMCLKL	HY/2012/08	18/9/2017	ASR1	Sunny	13:40	1-hour TSP	204	ug/m3
TMCLKL	HY/2012/08	18/9/2017	ASR1	Sunny	14:42	1-hour TSP	196	ug/m3
TMCLKL	HY/2012/08	18/9/2017	ASR1	Sunny	15:44	1-hour TSP	171	ug/m3
TMCLKL	HY/2012/08	18/9/2017	ASR10	Sunny	13:06	1-hour TSP	104	ug/m3
TMCLKL	HY/2012/08	18/9/2017	ASR10	Sunny	14:08	1-hour TSP	96	ug/m3
TMCLKL	HY/2012/08	18/9/2017	ASR10	Sunny	15:10	1-hour TSP	104	ug/m3
TMCLKL	HY/2012/08	18/9/2017	ASR5	Sunny	13:29	1-hour TSP	237	ug/m3
TMCLKL	HY/2012/08	18/9/2017	ASR5	Sunny	14:31	1-hour TSP	202	ug/m3
TMCLKL	HY/2012/08	18/9/2017	ASR5	Sunny	15:33	1-hour TSP	148	ug/m3
TMCLKL	HY/2012/08	18/9/2017	ASR6	Sunny	13:17	1-hour TSP	194	ug/m3
TMCLKL	HY/2012/08	18/9/2017	ASR6	Sunny	14:19	1-hour TSP	147	ug/m3
TMCLKL	HY/2012/08	18/9/2017	ASR6	Sunny	15:21	1-hour TSP	134	ug/m3

Email
message

Environmental
Resources
Management

To Ramboll Environ - Hong Kong, Limited (ENPO)

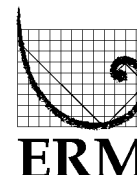
From ERM- Hong Kong, Limited

Ref/Project number Contract No. HY/2012/08 Tuen Mun-Chek Lap
Kok Link-Northern Connection Sub-sea Tunnel
Section

Subject Notification of Exceedance for Air Quality
Impact Monitoring

Date 27 September 2017

16/F Berkshire House,
25 Westlands Road
Quarry Bay, Hong Kong
Telephone: (852) 2271 3113
Facsimile: (852) 2723 5660
E-mail: jovy.tam@erm.com



Dear Sir or Madam,

Please find attached the Notification of Exceedance (NOE) of the following
Log no.:

0212330_27September2017_1hrTSP_Station ASR5
0212330_27September2017_1hrTSP_Station ASR5

Two Action Level Exceedances were recorded on 27 September 2017.

Regards,

Mr Jovy Tam
Environmental Team Leader

CONFIDENTIALITY NOTICE

This facsimile transmission is intended only for the use of the addressee and is confidential. If you are not the addressee it may be unlawful for you to read, copy, distribute, disclose or otherwise use the information in this facsimile. If you are not the intended recipient, please telephone or fax us.



ERM-Hong Kong, Limited

CONTRACT NO. HY/2012/08 TUEN MUN – CHEK LAP KOK LINK – NORTHERN CONNECTION SUB-SEA TUNNEL SECTION

Air Quality Impact Monitoring Notification of Exceedance

Log No.	0212330_27September2017_1hrTSP_Station ASR5 0212330_27September2017_1hrTSP_Station ASR5 [Total No. of Exceedances = 2]	
Date	27 September 2017 (Measured) 10 October 2017 (Laboratory results received by ERM)	
Monitoring Station	ASR1, ASR5, ASR6, ASR10 and AQMS1	
Parameter(s) with Exceedance(s)	1-hr TSP	
Action Levels	24-hr TSP ($\mu\text{g}/\text{m}^3$)	ASR1 = 213 ASR5 = 238 AQMS1 = 213 ASR6 = 238 ASR10 = 214
	1-hr TSP ($\mu\text{g}/\text{m}^3$)	ASR1 = 331 ASR5 = 340 AQMS1 = 335 ASR6 = 338 ASR10 = 337
Limit Levels	1-hr TSP ($\mu\text{g}/\text{m}^3$)	500
	24-hr TSP ($\mu\text{g}/\text{m}^3$)	260
Measured Levels	Action Level Exceedance for 1-hr TSP is observed at ASR5 ($355 \mu\text{g}/\text{m}^3$) during 1430 - 1530 hrs. Action Level Exceedance for 1-hr TSP is observed at ASR5 ($456 \mu\text{g}/\text{m}^3$) during 1532 - 1632 hrs.	
Works Undertaken (at the time of monitoring event)	On 27 September 2017, box culvert extension was carried out at Works Area Portion N-A and Construction of Ventilation Building at Portion N-C.	
Possible Reason for Action or Limit Level Exceedance(s)	<p>The exceedances are unlikely to be due to the Project, in view of the following:</p> <ul style="list-style-type: none"> According to the construction information provided by the Contractor, the majority of construction works on 27 September 2017 were box culvert extension at Works Area Portion N-A and Construction of Ventilation Building at Portions N-C. During the period of the land-based construction works, the Contractor has implemented the required mitigation measures as per the EP, approved EIA and Updated EM&A Manual (e.g. water spraying by water trucks on exposed soil within the Project site and associated work areas; use of wheel washing facilities). Whilst exceedances of Action Level was observed at ASR5, the 24-hr TSP level at the monitoring station ($ASR5 = 91 \mu\text{g}/\text{m}^3$) on 27 September 2017 were in compliance with the Action and Limit Levels. <p>Based on the above, the exceedances are unlikely to be due to the project.</p>	

Actions Taken / To Be Taken	Based on the site photo record on 27 September 2017, no dust nuisance was recorded at the Northern Landfall and activities conducted in this Contract's work have strictly followed the requirements stated in the EP (EP-354/2009/D). Site inspection was carried out on 27 September 2017 and 11 October 2017 to audit proper implementation of mitigation measures. In addition, the Contractor has implemented the required mitigation measures as per the EP, approved EIA and Updated EM&A Manual including watering to maintain all exposed road surfaces and dust sources wet, use of wheel washing facilities, use of sprinklers for water spraying, materials having the potential to create dust covered by a clean tarpaulin, use of water truck and watering on all exposed soil within the Project site) throughout the construction period, no additional mitigation is deemed necessary. Inspection on the air quality monitoring stations was also carried out on 6 October 2017. No dust nuisance was observed. Photo record is provided in <i>Annex A</i> . Weekly water spraying record is also provided. The Enhanced TSP Monitoring has commenced on 24 October 2014, the ET will monitor for future trends in exceedances.
Remarks	The monitoring results and the locations of air quality monitoring stations are attached.

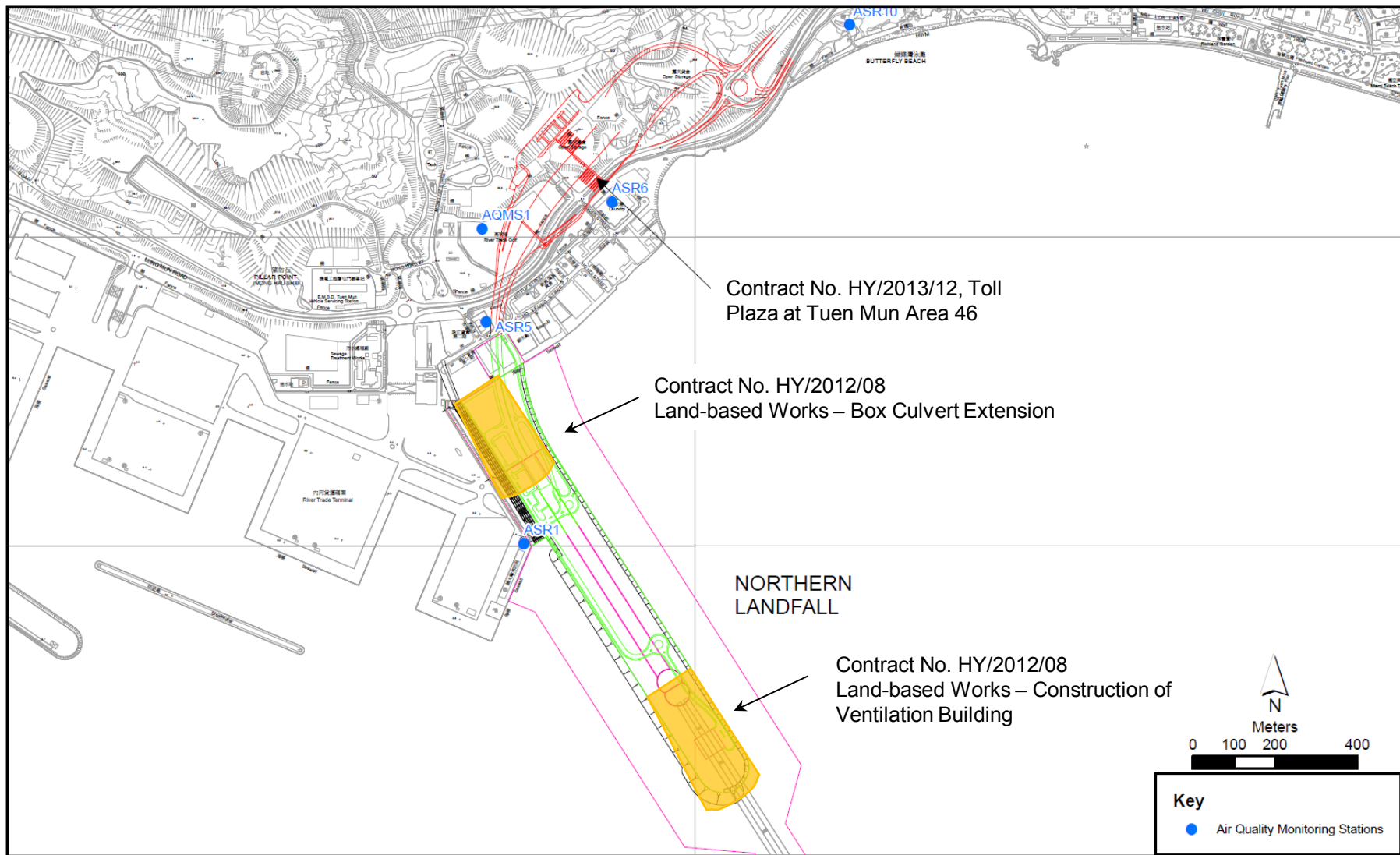


Figure 1

Indicative Construction Works Area on 27 September 2017



Annex A Photo Record during site inspection

*Note: Photos taken on 27/9/2017



Water spraying was applied frequently during dry conditions.(Works Area Portion N-B)



No dust nuisance was observed. (Works Area Portion N-A)



Annex A Photo Record during site inspection

*Note: Photos taken on 27/9/2017



Water spraying was applied frequently during dry conditions. (Works Area Portion N-A)



Water spraying was applied frequently during dry conditions. (Works Area Portion N-B)



Annex A Photo Record provided by the Contractor

*Note: Photos taken on 27/9/2017



Box Culvert Extension. (Works Area Portion N-A)



Construction of Ventilation Building. (Works Area Portion N-C)



Annex A Photo Record during inspection on AQM stations

*Note: Photos taken on 6/10/2017



Photo at ASR5 during 1-hour TSP monitoring



Photo at ASR5 during 1-hour TSP monitoring

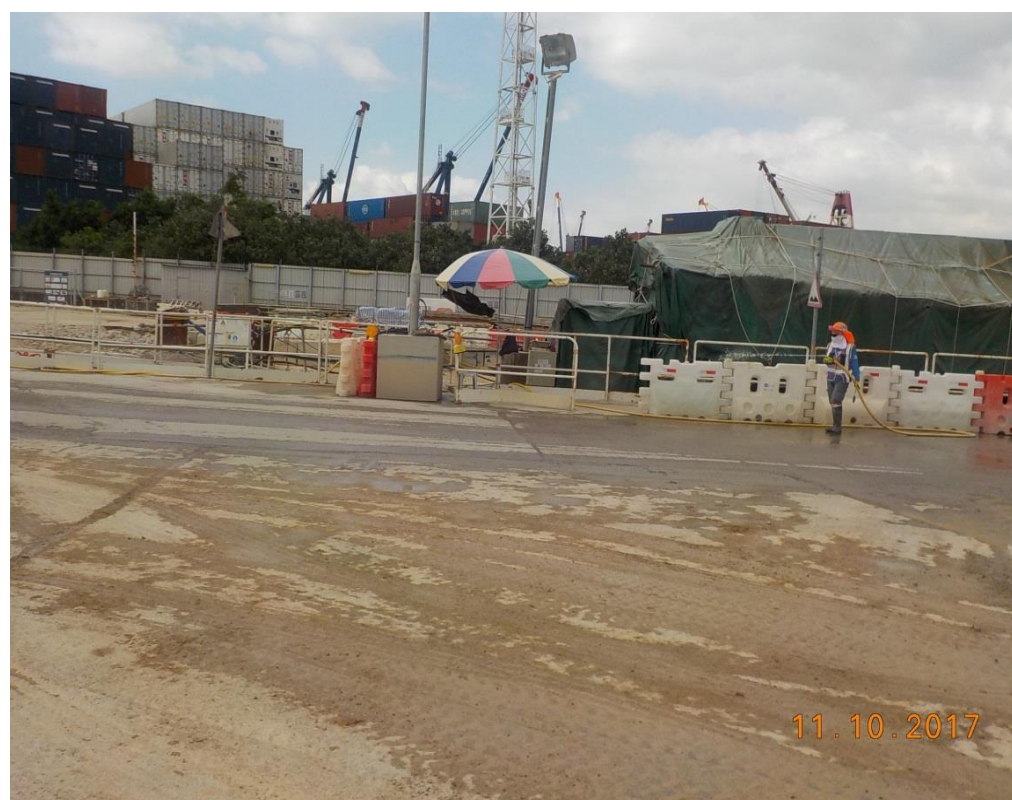


Annex A Photo Record during site inspection

*Note: Photos taken on 11/10/2017



Water spraying was applied frequently during dry conditions.(Works Area Portion N-A)



Water spraying was applied frequently during dry conditions.(Works Area Portion N-A)

Site Location 地盤位置:

Date 日期:

Northern Landfall
25th Sep. 2017 to 至 1st Oct. 2017

	Time 時間	Monday 星期一	Tuesday 星期二	Wednesday 星期三	Thursday 星期四	Friday 星期五	Saturday 星期六	Sunday 星期日
1	8:00 – 8:45	✓	✓	✓	✓	✓	✓	✓
2	8:45 – 9:30	✓	✓	✓	✓	✓	✓	✓
3	9:30 – 10:15	✓	✓	✓	✓	✓	✓	✓
4	10:15 – 11:00	✓	✓	✓	✓	✓	✓	✓
5	11:00 – 11:45	✓	✓	✓	✓	✓	✓	✓
6	11:45 – 12:30	✓	✓	✓	✓	✓	✓	✓
7	12:30 – 13:15	✓	✓	✓	✓	✓	✓	✓
8	13:15 – 14:00	✓	✓	✓	✓	✓	✓	✓
9	14:00 – 14:45	✓	✓	✓	✓	✓	✓	✓
10	14:45 – 15:30	✓	✓	✓	✓	✓	✓	✓
11	15:30 – 16:45	✓	✓	✓	✓	✓	✓	✓
12	16:45 – 17:30	✓	✓	✓	✓	✓	✓	✓
	Verified by Site Foreman 地盤科文簽署確認	✓	✓	✓	✓	✓	✓	✓

Night shift 夜間工作 (if necessary 如需要)

	17:30 – 19:00							
	19:00 – 20:30							
	20:30 – 22:00							
	22:00 – 23:00							

*Please - tick (✓) in the box if complete the spraying of water.
circle (O) in the box if it is raining.

*如果 - 已經完成灑水, 請於方格內加上剔號(✓)。
是下雨天, 請於方格內加上圓圈(O)。

Remarks:

- Pursuant to EP Clause 3.15, the Permit Holder shall undertake watering at least 12 times per day on all exposed soil within the Project site and associated work areas in Tuen Mun area throughout the construction phase.
- Spraying position includes the main haul road, open area, slopes, stockpiles and any other dusty materials.
- If it is raining, no water spraying is needed.
- The no of spraying will be increased due to site condition.

備註:

- 根據環境許可證 3.15 條例, 在整個施工階段內, 許可證持有人須每天至少 12 次在屯門區項目工地和相關的工作區域內的所有暴露土壤灑水。
- 灑水位置包括主要運輸道路, 空曠地帶, 斜坡, 存料堆, 以及任何其他產生塵埃物料。
- 當下雨時, 地盤將不需要灑水。
- 如果地盤情況更改或有需要時, 灑水次數會相應增加。

TMCLKL	HY/2012/08	27/9/2017	AQMS1	Sunny	13:50	1-hour TSP	230	ug/m3
TMCLKL	HY/2012/08	27/9/2017	AQMS1	Sunny	14:52	1-hour TSP	233	ug/m3
TMCLKL	HY/2012/08	27/9/2017	AQMS1	Sunny	15:54	1-hour TSP	221	ug/m3
TMCLKL	HY/2012/08	27/9/2017	ASR1	Sunny	13:40	1-hour TSP	275	ug/m3
TMCLKL	HY/2012/08	27/9/2017	ASR1	Sunny	14:42	1-hour TSP	252	ug/m3
TMCLKL	HY/2012/08	27/9/2017	ASR1	Sunny	15:44	1-hour TSP	259	ug/m3
TMCLKL	HY/2012/08	27/9/2017	ASR10	Sunny	13:15	1-hour TSP	159	ug/m3
TMCLKL	HY/2012/08	27/9/2017	ASR10	Sunny	14:17	1-hour TSP	183	ug/m3
TMCLKL	HY/2012/08	27/9/2017	ASR10	Sunny	15:19	1-hour TSP	196	ug/m3
TMCLKL	HY/2012/08	27/9/2017	ASR5	Sunny	13:28	1-hour TSP	321	ug/m3
TMCLKL	HY/2012/08	27/9/2017	ASR5	Sunny	14:30	1-hour TSP	355	ug/m3
TMCLKL	HY/2012/08	27/9/2017	ASR5	Sunny	15:32	1-hour TSP	456	ug/m3
TMCLKL	HY/2012/08	27/9/2017	ASR6	Sunny	13:27	1-hour TSP	297	ug/m3
TMCLKL	HY/2012/08	27/9/2017	ASR6	Sunny	14:29	1-hour TSP	302	ug/m3
TMCLKL	HY/2012/08	27/9/2017	ASR6	Sunny	15:31	1-hour TSP	310	ug/m3
TMCLKL	HY/2012/08	27/9/2017	AQMS1	Sunny	16:56	24-hour TSP	44	ug/m3
TMCLKL	HY/2012/08	27/9/2017	ASR1	Sunny	16:46	24-hour TSP	84	ug/m3
TMCLKL	HY/2012/08	27/9/2017	ASR10	Sunny	16:21	24-hour TSP	47	ug/m3
TMCLKL	HY/2012/08	27/9/2017	ASR5	Sunny	16:34	24-hour TSP	91	ug/m3
TMCLKL	HY/2012/08	27/9/2017	ASR6	Sunny	16:33	24-hour TSP	99	ug/m3