

Activity Name			2016				2017			
			Sep	Oct	Nov	Dec	Jan	Feb	Mar	Apr
TMCLK - Northern Connection Sub-Sea Tunnel Section										
Contract Dates										
Commencement and Completion Dates										
KD01 - Achievement of Stage 1 - Nth TBM & C&C for E&MS/TCSS							◆ KD01 - Achievement of Stage 1 - Nth TBM & C&C for E&MS/TCSS			
Site Possession Date										
Portions: X1,(N10,11,13 & 14) - Sth Landfall										
Portions: N1 to N4 & N12						◆ Portions: N1 to N4 & N12				
General Submissions										
Environmental										
Environmental Permit Submissions										
Supplementary WMP of C&C Tunnel at Sth.Landfall										
Supplementary WMP of C&C Tunnel at Sth.Landfall										
Sediment Quality Report/Dumping Permit										
Southern Landfall										
Southern landfall - Commencement of Shaft & C&C Tunnel Dwall										
Sediment Sampling & Testing Plan (SSTP) - if required										
Complete SSTP and Obtain EPD's approval										
Sediment Quality Report (SQR) - if required										
Advance Ground Investigation works for Sediment sampling										
Sediment Sample Testing & Report preparation										
Dumping Permit for Load Dumping (Loading Permit) - if required										
Finalize the application document and submit to EPD - for Dwall										
Notify the results and issue Loading Permit for Local & Cross Boundary Crossing - for Dwall										
General Design Submissions										
(G6) IFA for Tunnel GBP										
SO's Review										
SO Approval with Condition Received										
PAYMENT MILESTONE										
Design and Design Checking of the Works										
MS 2.5 SubmitAIP for seawall modification works at Southern Landfall							◆ MS 2.5 SubmitAIP for seawall modification works at Southern Landfall			
MS 2.32 Approve DDA for Approach Ramp Structures to Cut-and-cover Tunnels by the Supervising Officer										
MS 2.44 Approve DDA for South Ventilation Building by the Supervising Officer										
MS 2.48 Approve DDA for North Ventilation Building by the Supervising Officer										
MS 2.51 Submit DDA for Facilities Provision for TCSS										
MS 2.52 Approve DDA for Facilities Provision for TCSS by the Supervising Officer										
MS 2.56 Approve DDA for Drainage, Sewerage, Waterworks and Utilities at Southern Landfall by the Supervising Officer										
MS 2.60 Approve DDA for Drainage, Sewerage, Waterworks and Utilities at Northern Landfall by the Supervising Officer										
MS 2.69 Submit draft Operation and Maintenance Manual for all Tunnels and Cross Passgases										
MS 2.70 Accept Operation and Maintenance Manual for all Tunnels and Cross Passgases by the Supervising Officer										
MS 2.71 Submit draft Operation and Maintenance Manual for all works except Tunnels and Cross Passgases										
MS 2.72 Accept Operation and Maintenance Manual for all works except Tunnels and Cross Passgases by the Supervising Officer										
Tunnel Boring Machine (TBM) and Back-up Equipment for TBM Tunnel										
MS 3.1.5 Removal of TBM for Southbound Tunnel from Site after the completion of TBM Tunnel							◆ MS 3.1.5 Removal of TBM for Southbound Tunnel from Site after the completion of TBM Tunnel			
TBM Tunnel										
MS 3.3.5 Complete excavation to formation level for retrieval shaft and complete casting of base slab						◆ MS 3.3.5 Complete excavation to formation level for retrieval shaft and complete casting of base slab				
MS 3.3.6 Complete all necessary works of retrieval shaft to facilitate retrieval of TBM						◆ MS 3.3.6 Complete all necessary works of retrieval shaft to facilitate retrieval of TBM				
MS 3.3.26 Completion of excavation, support and permanent lining for 20% of the total length (measured on plan) of the Northern Connection Sub-Sea Tunnel										
MS 3.3.27 Completion of excavation, support and permanent lining for 21% of the total length (measured on plan) of the Northern Connection Sub-Sea Tunnel										
MS 3.3.28 Completion of excavation, support and permanent lining for 22% of the total length (measured on plan) of the Northern Connection Sub-Sea Tunnel										
MS 3.3.29 Completion of excavation, support and permanent lining for 23% of the total length (measured on plan) of the Northern Connection Sub-Sea Tunnel										
MS 3.3.30 Completion of excavation, support and permanent lining for 24% of the total length (measured on plan) of the Northern Connection Sub-Sea Tunnel										
MS 3.3.31 Completion of excavation, support and permanent lining for 25% of the total length (measured on plan) of the Northern Connection Sub-Sea Tunnel										
MS 3.3.32 Completion of excavation, support and permanent lining for 27.5% of the total length (measured on plan) of the Northern Connection Sub-Sea Tunnel										
MS 3.3.33 Completion of excavation, support and permanent lining for 30% of the total length (measured on plan) of the Northern Connection Sub-Sea Tunnel										
MS 3.3.34 Completion of excavation, support and permanent lining for 32.5% of the total length (measured on plan) of the Northern Connection Sub-Sea Tunnel										
MS 3.3.35 Completion of excavation, support and permanent lining for 35% of the total length (measured on plan) of the Northern Connection Sub-Sea Tunnel										
MS 3.3.36 Completion of excavation, support and permanent lining for 37.5% of the total length (measured on plan) of the Northern Connection Sub-Sea Tunnel										
MS 3.3.37 Completion of excavation, support and permanent lining for 40% of the total length (measured on plan) of the Northern Connection Sub-Sea Tunnel										
MS 3.3.38 Completion of excavation, support and permanent lining for 42.5% of the total length (measured on plan) of the Northern Connection Sub-Sea Tunnel										
MS 3.3.39 Completion of excavation, support and permanent lining for 45% of the total length (measured on plan) of the Northern Connection Sub-Sea Tunnel										
MS 3.3.40 Completion of excavation, support and permanent lining for 47.5% of the total length (measured on plan) of the Northern Connection Sub-Sea Tunnel										
MS 3.3.41 Completion of excavation, support and permanent lining for 50% of the total length (measured on plan) of the Northern Connection Sub-Sea Tunnel						◆ MS 3.3.41 Completion of excavation, support and permanent lining for 50% of the total length (measured on plan) of the Northern Connection Sub-Sea Tunnel				
MS 3.3.42 Completion of excavation, support and permanent lining for 52.5% of the total length (measured on plan) of the Northern Connection Sub-Sea Tunnel						◆ MS 3.3.42 Completion of excavation, support and permanent lining for 52.5% of the total length (measured on plan) of the Northern Connection Sub-Sea Tunnel				
MS 3.3.43 Completion of excavation, support and permanent lining for 55% of the total length (measured on plan) of the Northern Connection Sub-Sea Tunnel						◆ MS 3.3.43 Completion of excavation, support and permanent lining for 55% of the total length (measured on plan) of the Northern Connection Sub-Sea Tunnel				
MS 3.3.44 Completion of excavation, support and permanent lining for 57.5% of the total length (measured on plan) of the Northern Connection Sub-Sea Tunnel						◆ MS 3.3.44 Completion of excavation, support and permanent lining for 57.5% of the total length (measured on plan) of the Northern Connection Sub-Sea Tunnel				
MS 3.3.45 Completion of excavation, support and permanent lining for 60% of the total length (measured on plan) of the Northern Connection Sub-Sea Tunnel						◆ MS 3.3.45 Completion of excavation, support and permanent lining for 60% of the total length (measured on plan) of the Northern Connection Sub-Sea Tunnel				
MS 3.3.46 Completion of excavation, support and permanent lining for 62.5% of the total length (measured on plan) of the Northern Connection Sub-Sea Tunnel						◆ MS 3.3.46 Completion of excavation, support and permanent lining for 62.5% of the total length (measured on plan) of the Northern Connection Sub-Sea Tunnel				
MS 3.3.47 Completion of excavation, support and permanent lining for 65% of the total length (measured on plan) of the Northern Connection Sub-Sea Tunnel						◆ MS 3.3.47 Completion of excavation, support and permanent lining for 65% of the total length (measured on plan) of the Northern Connection Sub-Sea Tunnel				
MS 3.3.48 Completion of excavation, support and permanent lining for 67.5% of the total length (measured on plan) of the Northern Connection Sub-Sea Tunnel						◆ MS 3.3.48 Completion of excavation, support and permanent lining for 67.5% of the total length (measured on plan) of the Northern Connection Sub-Sea Tunnel				
MS 3.3.49 Completion of excavation, support and permanent lining for 70% of the total length (measured on plan) of the Northern Connection Sub-Sea Tunnel						◆ MS 3.3.49 Completion of excavation, support and permanent lining for 70% of the total length (measured on plan) of the Northern Connection Sub-Sea Tunnel				
MS 3.3.50 Completion of excavation, support and permanent lining for 72.5% of the total length (measured on plan) of the Northern Connection Sub-Sea Tunnel						◆ MS 3.3.50 Completion of excavation, support and permanent lining for 72.5% of the total length (measured on plan) of the Northern Connection Sub-Sea Tunnel				
MS 3.3.51 Completion of excavation, support and permanent lining for 75% of the total length (measured on plan) of the Northern Connection Sub-Sea Tunnel						◆ MS 3.3.51 Completion of excavation, support and permanent lining for 75% of the total length (measured on plan) of the Northern Connection Sub-Sea Tunnel				
MS 3.3.52 Completion of excavation, support and permanent lining for 77.5% of the total length (measured on plan) of the Northern Connection Sub-Sea Tunnel						◆ MS 3.3.52 Completion of excavation, support and permanent lining for 77.5% of the total length (measured on plan) of the Northern Connection Sub-Sea Tunnel				
MS 3.3.53 Completion of excavation, support and permanent lining for 80% of the total length (measured on plan) of the Northern Connection Sub-Sea Tunnel						◆ MS 3.3.53 Completion of excavation, support and permanent lining for 80% of the total length (measured on plan) of the Northern Connection Sub-Sea Tunnel				
MS 3.3.54 Completion of excavation, support and permanent lining for 82.5% of the total length (measured on plan) of the Northern Connection Sub-Sea Tunnel						◆ MS 3.3.54 Completion of excavation, support and permanent lining for 82.5% of the total length (measured on plan) of the Northern Connection Sub-Sea Tunnel				
MS 3.3.55 Completion of excavation, support and permanent lining for 85% of the total length (measured on plan) of the Northern Connection Sub-Sea Tunnel						◆ MS 3.3.55 Completion of excavation, support and permanent lining for 85% of the total length (measured on plan) of the Northern Connection Sub-Sea Tunnel				
MS 3.3.56 Completion of excavation, support and permanent lining for 87.5% of the total length (measured on plan) of the Northern Connection Sub-Sea Tunnel						◆ MS 3.3.56 Completion of excavation, support and permanent lining for 87.5% of the total length (measured on plan) of the Northern Connection Sub-Sea Tunnel				
MS 3.3.57 Completion of excavation, support and permanent lining for 90% of the total length (measured on plan) of the Northern Connection Sub-Sea Tunnel						◆ MS 3.3.57 Completion of excavation, support and permanent lining for 90% of the total length (measured on plan) of the Northern Connection Sub-Sea Tunnel				
MS 3.3.58 Completion of excavation, support and permanent lining for 92.5% of the total length (measured on plan) of the Northern Connection Sub-Sea Tunnel						◆ MS 3.3.58 Completion of excavation, support and permanent lining for 92.5% of the total length (measured on plan) of the Northern Connection Sub-Sea Tunnel				
MS 3.3.59 Completion of excavation, support and permanent lining for 95% of the total length (measured on plan) of the Northern Connection Sub-Sea Tunnel						◆ MS 3.3.59 Completion of excavation, support and permanent lining for 95% of the total length (measured on plan) of the Northern Connection Sub-Sea Tunnel				
MS 3.3.60 Completion of excavation, support and permanent lining for 97.5% of the total length (measured on plan) of the Northern Connection Sub-Sea Tunnel						◆ MS 3.3.60 Completion of excavation, support and permanent lining for 97.5% of the total length (measured on plan) of the Northern Connection Sub-Sea Tunnel				
MS 3.3.61 Completion of excavation, support and permanent lining for 100% of the total length (measured on plan) of the Northern Connection Sub-Sea Tunnel						◆ MS 3.3.61 Completion of excavation, support and permanent lining for 100% of the total length (measured on plan) of the Northern Connection Sub-Sea Tunnel				
MS 3.3.92 Completion of excavation, support and permanent lining for 40% of the total length (measured on plan) of the Southern Connection Sub-Sea Tunnel										
MS 3.3.93 Completion of excavation, support and permanent lining for 42.5% of the total length (measured on plan) of the Southern Connection Sub-Sea Tunnel										
MS 3.3.94 Completion of excavation, support and permanent lining for 45% of the total length (measured on plan) of the Southern Connection Sub-Sea Tunnel										
MS 3.3.95 Completion of excavation, support and permanent lining for 47.5% of the total length (measured on plan) of the Southern Connection Sub-Sea Tunnel										
MS 3.3.96 Completion of excavation, support and permanent lining for 50% of the total length (measured on plan) of the Southern Connection Sub-Sea Tunnel										
MS 3.3.97 Completion of excavation, support and permanent lining for 52.5% of the total length (measured on plan) of the Southern Connection Sub-Sea Tunnel										
MS 3.3.98 Completion of excavation, support and permanent lining for 55% of the total length (measured on plan) of the Southern Connection Sub-Sea Tunnel										
MS 3.3.99 Completion of excavation, support and permanent lining for 57.5% of the total length (measured on plan) of the Southern Connection Sub-Sea Tunnel						◆ MS 3.3.99 Completion of excavation, support and permanent lining for 57.5% of the total length (measured on plan) of the Southern Connection Sub-Sea Tunnel				
MS 3.3.100 Completion of excavation, support and permanent lining for 60% of the total length (measured on plan) of the Southern Connection Sub-Sea Tunnel						◆ MS 3.3.100 Completion of excavation, support and permanent lining for 60% of the total length (measured on plan) of the Southern Connection Sub-Sea Tunnel				
Page 1 of 11	<div><div></div>Planned Bar</div> <div><div></div>Planned Bar - Critical</div> <div><div>◆</div>Planned Milestone</div> <div><div></div>Progress bar</div> <div><div>◆</div>Progress Milestone</div>	TMCLK - Northern Connection Sub-Sea Tunnel Section	Detailed Works Programme (Rev. F)				Three Months Rolling Programme			
Project ID: TMCLK DWPF 16W47			Progress as of 27-Nov-16							
Data Date: 27-Nov-16										

[illegible]

Page 2 of 11

Project ID: TMCLK DWPF 16W47

Data Date: 27-Nov-16

Planned Bar

Planned Bar - Critical

Planned Milestone

Progress bar

Progress Milestone

TMCLK - Northern Connection Sub-Sea Tunnel Section

Detailed Works Programme (Rev. F)

Three Months Rolling Programme

Progress as of 27-Nov-16

香港寶嘉

Dragages HongKong

A member of the Bouygues Construction group

Dragages - Bouygues Joint Venture 寶嘉 - 布依格聯營

BOUYGUES

CONSTRUCTION

Date	Revision	Checked	Approved
12-Feb-14	TMCLKDBJGEN/PRG/98507	WYu	SPh
08-Apr-14	TMCLKDBJGEN/PRG/98507 Rev.B		WYu
28-Aug-14	TMCLKDBJGEN/PRG/98507 Rev.C	CLa	WYu
30-Oct-15	TMCLKDBJGEN/PRG/98507 Rev.F	WYu	

Activity Name		2016				2017			
		Sep	Oct	Nov	Dec	Jan	Feb	Mar	Apr
Construction									
Northern Landfall									
North Reclamation (Phase 1)									
Construction									
Zone B									
Reclamation									
Surcharge Removal - Zone B - (CH598 to 648)									
Surcharge Period - Zone B - (CH648 to 698) stage 2									
Surcharge Removal - Zone B - (CH598 to 698) stage 2									
Zone F									
CH184 to CH231									
F - Anchor wall Installation - CH184 to CH231									
F - Backfilling up to 0.0mPD & G2 Installation to Anchor Wall- CH184 to CH231									
F - Backfilling up to +3.0mPD & G1 Installation to Anchor Wall- CH184 to CH231									
F - Backfilling up to +6.0mPD to Anchor Wall - CH184 to CH231									
F - Backfilling to +6.0mPD to Existing Seawall - CH184 to CH231									
CH231 to CH278									
F - Backfilling up to +6.0mPD - CH231 to CH278									
F - Anchor wall Installation - CH231 to CH278									
F - Backfilling up to 0.0mPD & G2 Installation to Anchor Wall- CH231 to CH278									
F - Backfilling up to +3.0mPD & G1 Installation to Anchor Wall - CH231 to CH278									
F - Backfilling up to +6.0mPD to Anchor Wall - CH231 to CH278									
F - Backfilling to +6.0mPD to Existing Seawall - CH231 to CH278									
CH278 to CH327									
F - Backfilling up to +6.0mPD - CH278 to CH327									
F - Anchor wall Installation - CH278 to CH327									
F - Backfilling up to 0.0mPD & G2 Installation to Anchor Wall - CH278 to CH327									
F - Backfilling up to +3.0mPD & G1 Installation to Anchor Wall - CH278 to CH327									
F - Backfilling up to +6.0mPD to Anchor Wall - CH278 to CH327									
F - Backfilling to +6.0mPD to Existing Seawall - CH278 to CH327									
CH327 to CH381									
F - Backfilling up to +6.0mPD - CH327 to CH381									
F - Anchor wall Installation - CH327 to CH381									
F - Backfilling up to 0.0mPD & G2 Installation to Anchor Wall - CH327 to CH381									
F - Backfilling up to +3.0mPD & G1 Installation to Anchor Wall - CH327 to CH381									
F - Backfilling up to +6.0mPD to Anchor Wall - CH327 to CH381									
F - Backfilling to +6.0mPD to Existing Seawall - CH327 to CH381									
Box Culvert Extension									
Construction									
Ch000-010 Culvert Outfall									
Concreting in-situ Top Slab and stich joint									
Removal of temporary bulk head									
CH000-150 Land Section									
ELS & Structure									
Pile A43/A41 CJ to Pile A41/A39 CJ									
Box Culvert Structure									
Removal of strut S2 & Backfilling up to required level									
Pile A45/A43 CJ to Pile A43/A41 CJ									
Box Culvert Structure									
Removal of strut S2 & Backfilling up to required level									
Ch150-250 Marine Section									
ELS & Structure									
Pile A41/A39 CJ to Pile A39/A37 CJ									
ELS									
Excavation to 0.5m below strut S2									
Installation of strut S2									
Excavation to 0.5m below strut S1									
Installation of strut S1									
Excavation to FEL									
Box Culvert Structure									
Pile cap construction									
Base slab construction including kicker									
Removal of strut S1									
Sliding formworks 1st assembly									
Walls & top slab construction									
Removal of strut S2 & Backfilling up to required level									
Pile A39/A37 CJ to Pile A37/A35 CJ									
ELS									
Excavation to 0.5m below strut S2									
Installation of strut S2									
Excavation to 0.5m below strut S1									
Installation of strut S1									
Excavation to FEL									
Box Culvert Structure									
Pile cap construction									
Base slab construction including kicker									
Removal of strut S1									
Walls & top slab construction									
Removal of strut S2 & Backfilling up to required level									
Pile A37/A35 CJ to Pile A35/A33 CJ									
ELS									
Excavation to 0.5m below strut S2									
Installation of strut S2									
Excavation to 0.5m below strut S1									
Installation of strut S1									
Excavation to FEL									
Box Culvert Structure									
Pile cap construction									
Base slab construction including kicker									
Removal of strut S1									
Walls & top slab construction									

Page 3 of 11

Project ID: TMCLK DWPF 16W47

Data Date: 27-Nov-16

Planned Bar

Planned Bar - Critical

Planned Milestone

Progress bar

Progress Milestone

TMCLK - Northern Connection Sub-Sea Tunnel Section

Detailed Works Programme (Rev. F)

Three Months Rolling Programme

Progress as of 27-Nov-16

香港實業

Dragages

HongKong

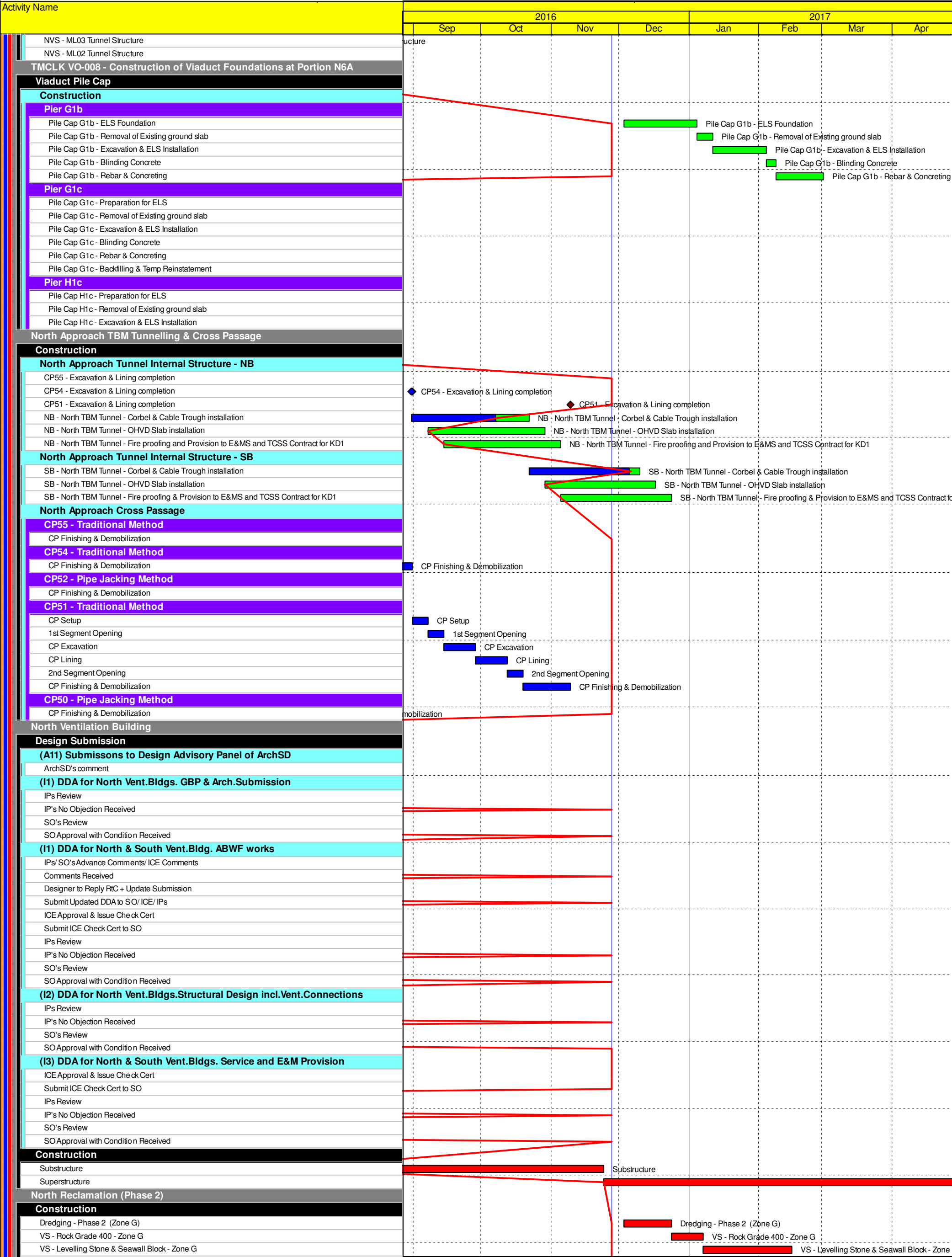
A member of the Bouygues Construction group

Dragages - Bouygues Joint Venture 實業·布依格聯營

BOUYGUES

TRAVAUX PUBLICS

Date	Revision	Cheded	Approved
12-Feb-14	TMCLKDBJGEN/PRG/98507	WYu	SPa
08-Apr-14	TMCLKDBJGEN/PRG/98507 Rev.B	SPa	WYu
28-Aug-14	TMCLKDBJGEN/PRG/98507 Rev.C	CLa	WYu
30-Oct-15	TMCLKDBJGEN/PRG/98507 Rev.F	WYu	



Planned Bar

Planned Bar - Critical

Planned Milestone

Progress bar

Progress Milestone

TMCLK - Northern Connection Sub-Sea Tunnel Section

Detailed Works Programme (Rev. F)

Three Months Rolling Programme

Progress as of 27-Nov-16



Dragages - Bouygues Joint Venture 寶嘉 - 布依格聯營

Date	Revision	Cheded	Approved
12-Feb-14	TMCLKDBJGEN/PRG/98507	WYu	SPa
08-Apr-14	TMCLKDBJGEN/PRG/98507 Rev.B	SPa	WYu
28-Aug-14	TMCLKDBJGEN/PRG/98507 Rev.C	CLa	WYu
30-Oct-15	TMCLKDBJGEN/PRG/98507 Rev.F	WYu	

Page 7 of 11

Project ID: TMCLK DWPF 16W47

Data Date: 27-Nov-16

Planned Bar

Planned Bar - Critical

Planned Milestone

Progress bar

Progress Milestone

TMCLK - Northern Connection Sub-Sea Tunnel Section

Detailed Works Programme (Rev. F)

Three Months Rolling Programme

Progress as of 27-Nov-16

香港寶嘉

Dragages HongKong

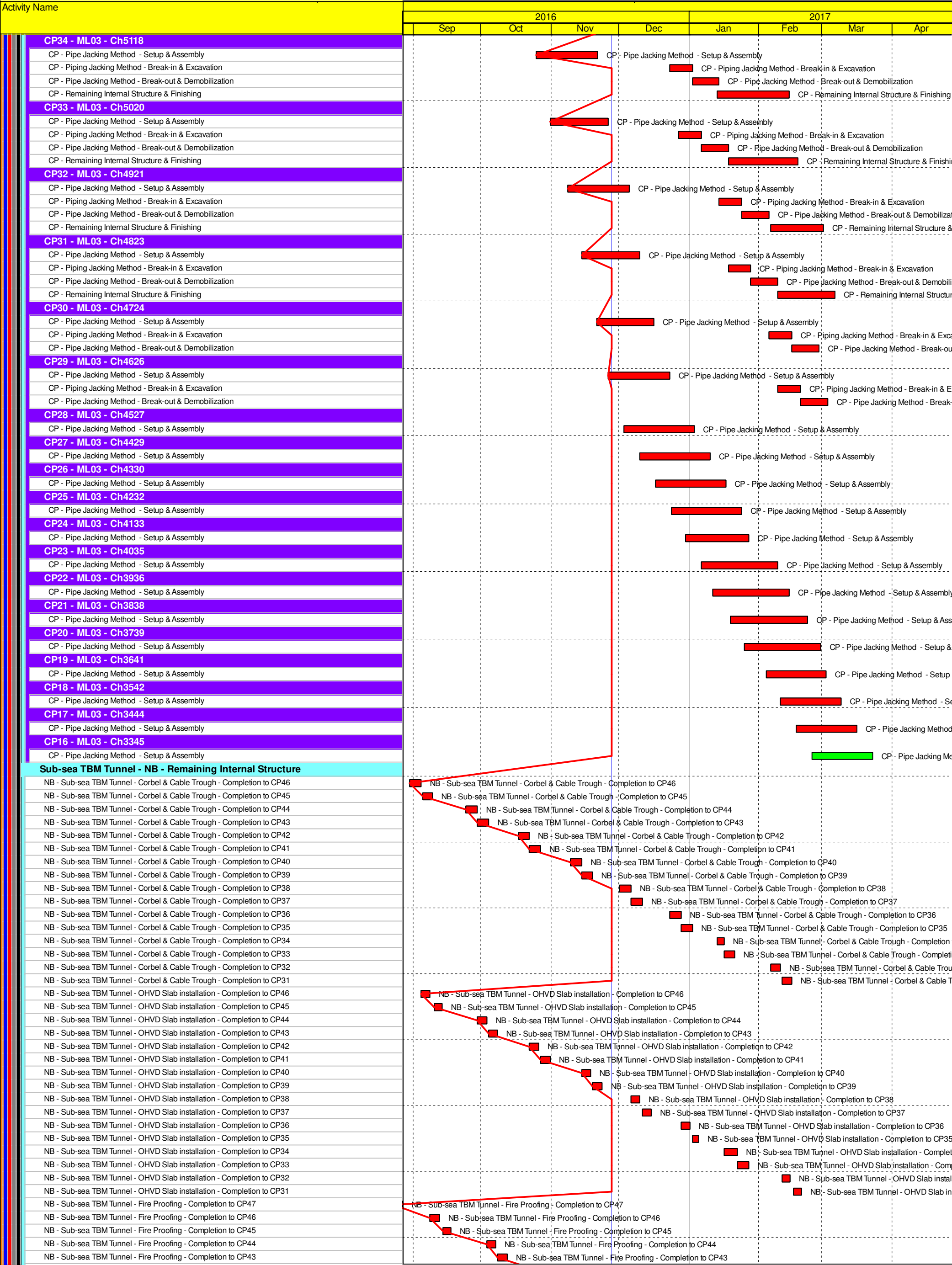
A member of the Bouygues Construction group

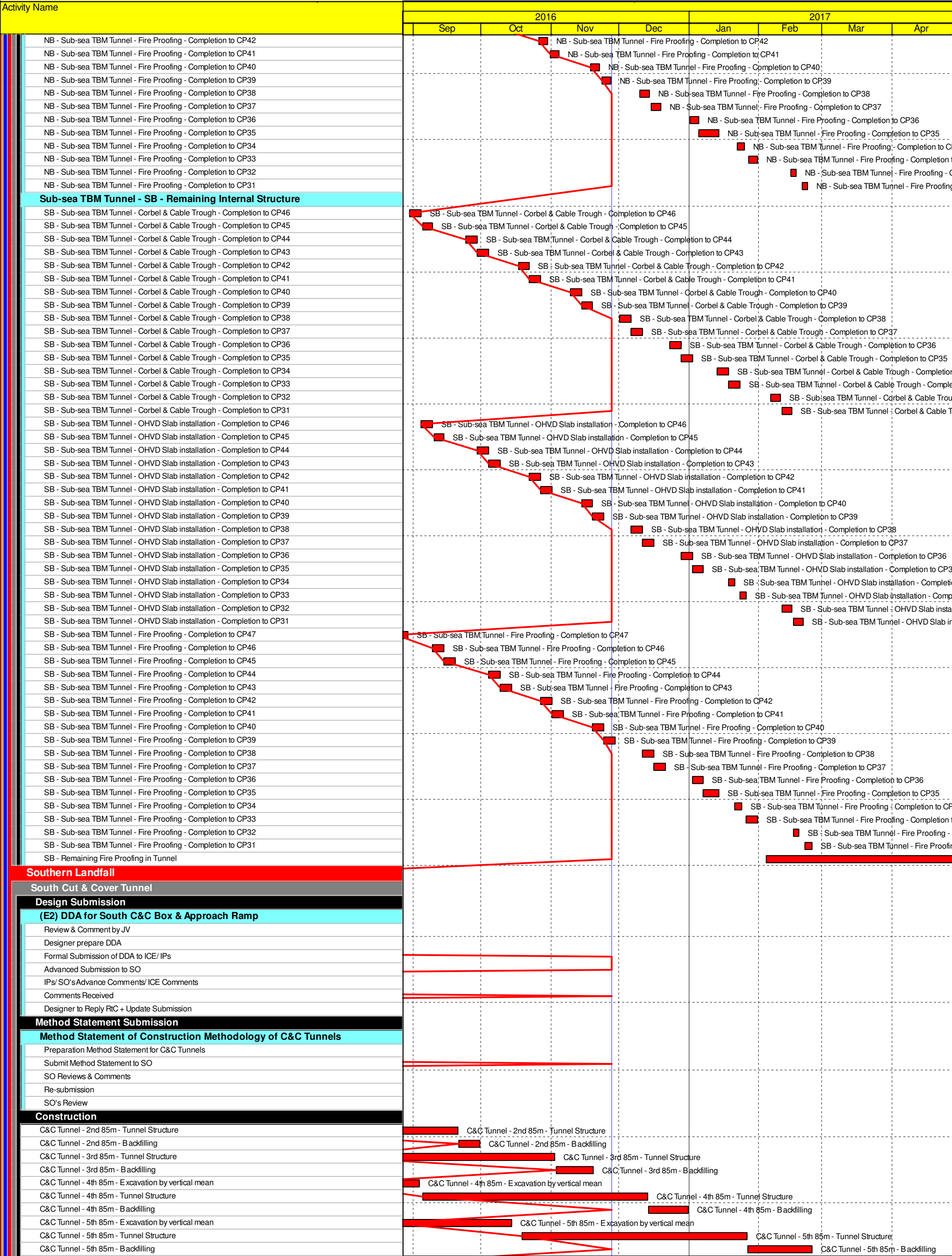
Dragages - Bouygues Joint Venture 寶嘉 - 布依格聯營

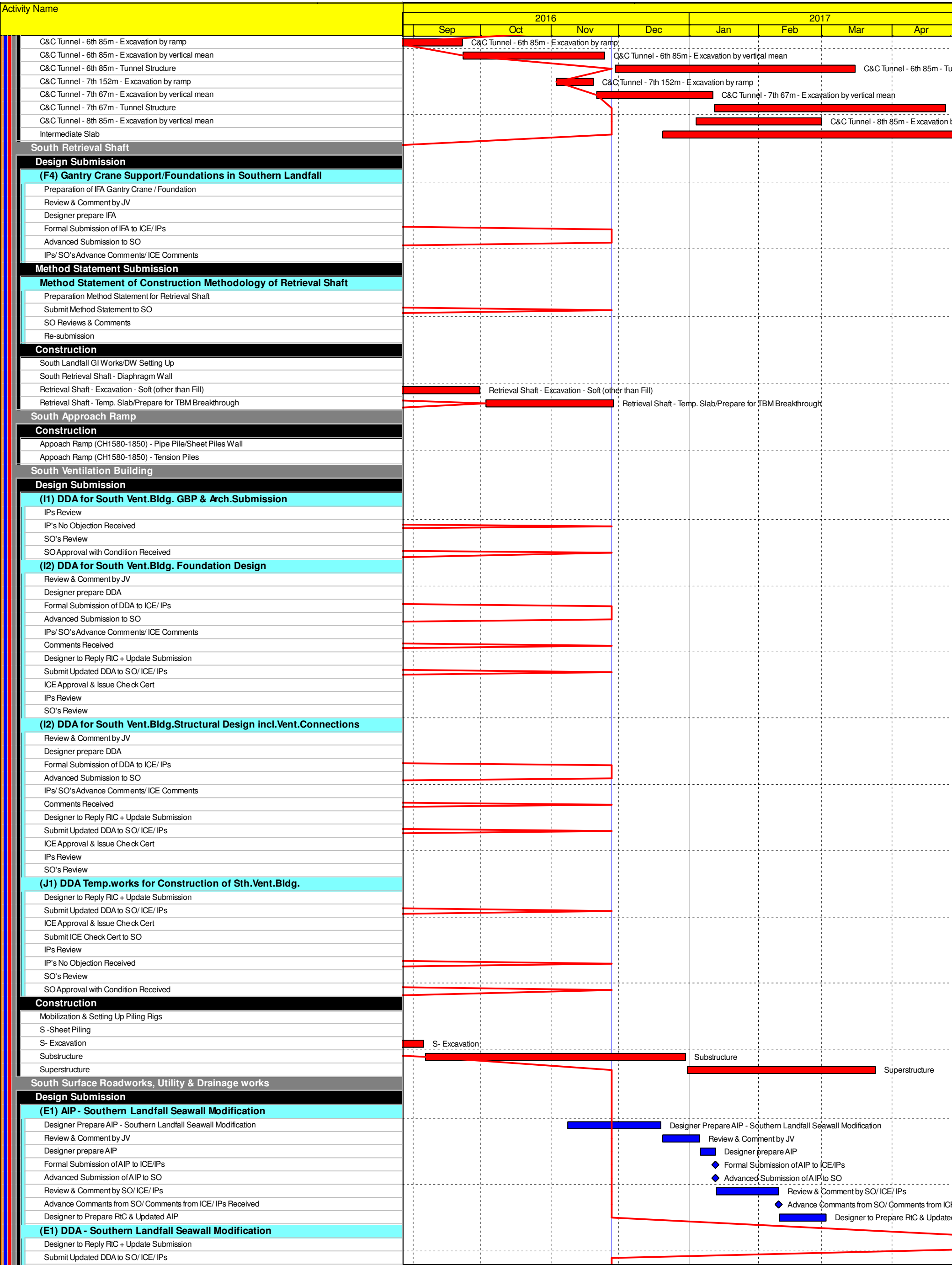
BOUYGUES

TRAVAUX PUBLICS

Date	Revision	Checked	Approved
12-Feb-14	TMCLKDBUGEN PRG98507	WYu	SPo
08-Apr-14	TMCLKDBUGEN PRG98507 Rev.B	SPa	WYu
28-Aug-14	TMCLKDBUGEN PRG98507 Rev.C	CLa	WYu
30-Oct-15	TMCLKDBUGEN PRG98507 Rev.F	WYu	WYu







香港寶嘉

Dragages

HongKong

A member of the Bouygues Construction group

Dragages - Bouygues Joint Venture 寶嘉 - 布依格聯營

BOUYGUES

TRAVAUX PUBLICS

Date	Revision	Checked	Approved
12-Feb-14	TMCLKDBJGEN/PRG/98507	WYu	SPu
08-Apr-14	TMCLKDBJGEN/PRG/98507 Rev.B	SPu	WYu
28-Aug-14	TMCLKDBJGEN/PRG/98507 Rev.C	CLa	WYu
30-Oct-15	TMCLKDBJGEN/PRG/98507 Rev.F	WYu	

Activity Name	2016				2017			
	Sep	Oct	Nov	Dec	Jan	Feb	Mar	Apr
ICE Approval & Issue Check Cert								
Submit ICE Check Cert to SO								
IPs Review								
IP's No Objection Received								
SO's Review								
SO Approval with Condition Received								
(E3) DDA for Sewerage, Drainage, Waterworks & Utility works for South Landf								
IPs Review								
IP's No Objection Received								
SO's Review								
SO Approval with Condition Received								
Method Statement Submission								
Method Statement of Ground Treatment for TBMs Passing under Southern La								
Preparation Method Statement for Ground Improvement in South Landfall								
Submit Method Statement to SO								
SO Reviews & Comments								
Re-submission								
SO's Review								
SO's Approval								
Construction								
Temporary Platform for Ground Treatment for TBM passing under Southern Seawall								
Grouting Treatment for TBM passing under Southern Seawall								
Testing & Commissioning/Inspection & Handover								
Final Inspection & Handover								
Design Submission								
(A12) Maintenance Matrix								
Preparation of Maintenance Matrix								
Prepare Re-submission								
2nd Submission								
SO's Condition Approval								
(A13) Operation & Maintenance Manual								
Preparation of Operation and Maintenance Manual								
1st Submission								
SO's Comments for 1st Submission								
Prepare Re-submission								
(A14) As-built & As-fabricated Drawings								
Preparation of As-built and As-fabricated Drawings								
1st Submission								
SO's Comments for 1st Submission								
(A15) Health & Safety File incl.As-built Dwgs & Records,Maintenance Schedul								
Preparation of Health and Safety File including as-built drawings and records, maintenance schedules, op								
1st Submission								
SO's Comments for 1st Submission								