

Page 1 of 11

Project ID: TMCLK DWPF 16W25

Data Date: 02-Oct-16

Planned Bar

Planned Bar - Critical

Planned Milestone

Planned Milestone

Progress bar

Progress Milestone

TMCLK - Northern Connection Sub-Sea Tunnel Section

Detailed Works Programme (Rev. F)

Three Months Rolling Programme

Progress as of 02-Oct-16

香港寶嘉

Dragages Hong Kong

A member of the Bouygues Construction group

Dragages - Bouygues Joint Venture 寶嘉 - 布依格聯營

BOUYGUES TRAVELER PUBLICS

Date	Revision	Checked	Approved
12-Feb-14	TMCLKDBJGEN/PRG/98507	WYu	SPa
08-Apr-14	TMCLKDBJGEN/PRG/98507 Rev.B	SPa	WYu
28-Aug-14	TMCLKDBJGEN/PRG/98507 Rev.C	CLa	WYu
30-Oct-15	TMCLKDBJGEN/PRG/98507 Rev.F	WYu	

Activity Name	Orig Dur	DWP Start	DWP Finish	% Comp	2016						2017		
					Jul	Aug	Sep	Oct	Nov	Dec	Jan	Feb	
MS 5.1.7 Complete retaining wall foundation for 20% of the total length (measured on plan) of approach ramp structure	0		30-Nov-15	0%									
MS 5.1.8 Complete retaining wall foundation for 30% of the total length (measured on plan) of approach ramp structure	0		30-Nov-15	0%									
MS 5.1.9 Complete retaining wall foundation for 40% of the total length (measured on plan) of approach ramp structure	0		31-Dec-15	0%									
MS 5.1.10 Complete retaining wall foundation for 50% of the total length (measured on plan) of approach ramp structure	0		31-Dec-15	0%									
MS 5.1.11 Complete retaining wall foundation for 60% of the total length (measured on plan) of approach ramp structure	0		30-Jan-16	0%									
MS 5.1.12 Complete retaining wall foundation for 70% of the total length (measured on plan) of approach ramp structure	0		30-Jan-16	0%									
MS 5.1.13 Complete retaining wall foundation for 80% of the total length (measured on plan) of approach ramp structure	0		29-Feb-16	0%									
MS 5.1.14 Complete retaining wall foundation for 90% of the total length (measured on plan) of approach ramp structure	0		29-Feb-16	0%									
MS 5.1.15 Complete retaining wall foundation for 100% of the total length (measured on plan) of approach ramp structure	0		31-Mar-16	0%									
South Ventilation Buildings													
MS 7.1.1 Complete 100% of cofferdam for excavation	0		30-Sep-16	0%									
MS 7.1.2 Complete 100% of excavation to the formation level	0		30-Sep-16	0%									
MS 7.1.3 Complete 100% of foundation for the ventilation building	0		30-Apr-16	0%									
MS 7.1.4 Complete concreting works of 25% area of the total construction floor area for the ventilation building	0		31-Oct-16	0%									
MS 7.1.5 Complete concreting works of 50% area of the total construction floor area for the ventilation building	0		31-Dec-16	0%									
North Ventilation Buildings													
MS 7.2.1 Complete 100% of cofferdam for excavation	0		31-May-16	0%									
MS 7.2.2 Complete 100% of excavation to the formation level	0		31-May-16	0%									
MS 7.2.4 Complete concreting works of 25% area of the total construction floor area for the ventilation building	0		30-Jul-16	0%									
MS 7.2.5 Complete concreting works of 50% area of the total construction floor area for the ventilation building	0		31-Oct-16	0%									
MS 7.2.6 Complete concreting works of 75% area of the total construction floor area for the ventilation building	0		31-Dec-16	0%									
Facilities Provision for E&M Works for TBM Tunnel, Cut & Cover Tunnels and Cross Passages													
MS 9.1.1 Complete 25% of bonding terminal, opening and accessories, etc.	0		30-Sep-16	0%									
MS 9.1.2 Complete 25% of plinth, hoisting facilities and accessories, etc.	0		30-Sep-16	0%									
Construction													
Northern Landfall													
North Reclamation (Phase 1)													
Construction													
Zone B													
Reclamation													
Surcharge Removal - Zone B - (CH598 to 698) stage 1	10	28-Jul-16	08-Aug-16	0%									
Surcharge Period - Zone B - (CH648 to 698) stage 2	180	09-Aug-16	04-Feb-17	0%									
Box Culvert Extension													
Construction													
Ch000-010 Culvert Outfall													
Removal of public fill at outfall area	4	09-Sep-15	12-Sep-15	100%									
Cut sheet pile wall below water level by diver	18	14-Sep-15	06-Oct-15	100%									
Removal of temporary seawall block	3	07-Oct-15	09-Oct-15	100%									
Preparation & pour blinding concrete base of box culvert outfall	8	10-Oct-15	19-Oct-15	100%									
Install precast culvert element by barge (5 nos.)	21	20-Oct-15	13-Nov-15	100%									
Concreting in-situ Top Slab and stitch joint	12	14-Nov-15	27-Nov-15	100%									
Removal of temporary bulk head	18	28-Nov-15	18-Dec-15	0%									
CH000-150 Land Section													
ELS & Structure													
Pile A43/A41 CJ to Pile A41/A39 CJ													
Box Culvert Structure													
System formworks delivery & setup	14	03-Jul-15	18-Jul-15	100%									
Walls & top slab construction	6	20-Jul-15	25-Jul-15	100%									
Removal of strut S2 & Backfilling up to required level	6	03-Aug-15	08-Aug-15	100%									
Pile A45/A43 CJ to Pile A43/A41 CJ													
Box Culvert Structure													
Walls & top slab construction	6	27-Jul-15	01-Aug-15	100%									
Removal of strut S2 & Backfilling up to required level	6	10-Aug-15	15-Aug-15	100%									
Pile A47/A45 CJ to Pile A45/A43 CJ													
Box Culvert Structure													
Walls & top slab construction	6	03-Aug-15	08-Aug-15	100%									
Removal of strut S2 & Backfilling up to required level	6	17-Aug-15	22-Aug-15	100%									
Pile A49/A47 CJ to Pile A47/A45 CJ													
Box Culvert Structure													
Removal of strut S2 & Backfilling up to required level	6	24-Aug-15	29-Aug-15	100%									
Pile A52/A49 CJ to Pile A49/A47 CJ													
Box Culvert Structure													
Removal of strut S2 & Backfilling up to required level	6	31-Aug-15	05-Sep-15	100%									
Preparation for Temp Access Road for N8 handvoer	24	07-Sep-15	06-Oct-15	100%									
Ch150-250 Marine Section													
ELS & Structure													
Toe grouting Ch100-250	95	07-Sep-15	31-Dec-15	100%									
2nd Pumping test Ch100-250	29	02-Jan-16	04-Feb-16	100%									
Pile A41/A39 CJ to Pile A39/A37 CJ													
ELS													
Excavation to 0.5m below strut S2	4	05-Feb-16	16-Feb-16	100%									
Installation of strut S2	6	17-Feb-16	23-Feb-16	100%									
Excavation to 0.5m below strut S1	5	24-Feb-16	29-Feb-16	0%									
Installation of strut S1	5	01-Mar-16	05-Mar-16	0%									
Excavation to FEL	5	07-Mar-16	11-Mar-16	0%									
Box Culvert Structure													
Pile cap construction	10	18-Mar-16	01-Apr-16	0%									
Base slab construction including kicker	6	15-Apr-16	21-Apr-16	0%									
Removal of strut S1	4	22-Apr-16	26-Apr-16	0%									
Sliding formworks 1st assembly	18	27-Apr-16	19-May-16	0%									
Walls & top slab construction	6	20-May-16	26-May-16	0%									
Pile A39/A37 CJ to Pile A37/A35 CJ													
ELS													
Excavation to 0.5m below strut S2	4	17-Feb-16	20-Feb-16	100%									
Installation of strut S2	6	22-Feb-16	27-Feb-16	100%									
Excavation to 0.5m below strut S1	5	01-Mar-16	05-Mar-16	0%									
Installation of strut S1	5	07-Mar-16	11-Mar-16	0%									

Page 3 of 11

Project ID: TMCLK DWP 16W25

Data Date: 02-Oct-16

Planned Bar

Planned Bar - Critical

Planned Milestone

Progress bar

Progress Milestone

TMCLK - Northern Connection Sub-Sea Tunnel Section

Detailed Works Programme (Rev. F)

Three Months Rolling Programme

Progress as of 02-Oct-16

香港寶嘉

Dragages HongKong

A member of the Bouygues Construction group

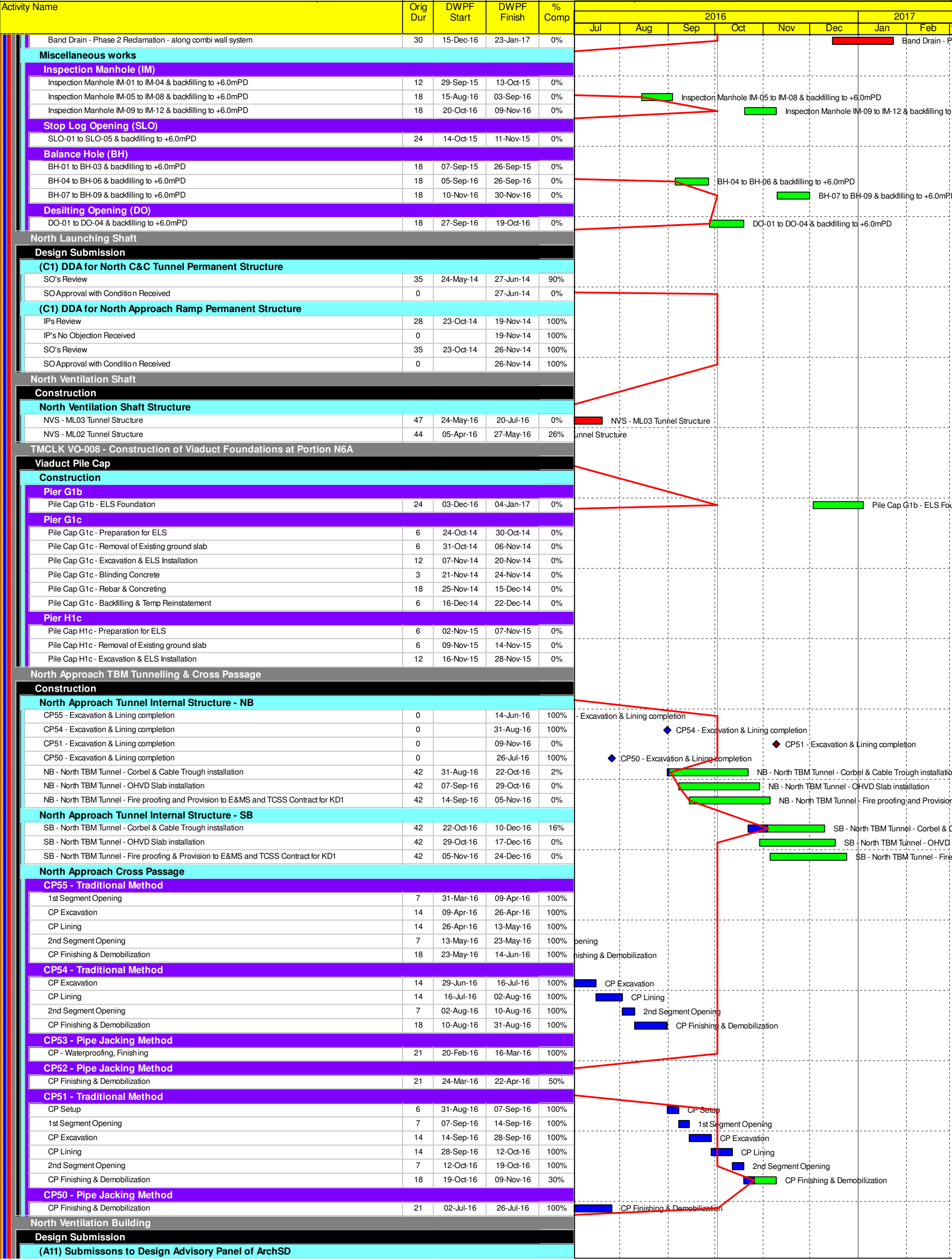
Dragages - Bouygues Joint Venture 寶嘉 - 布依格聯營

BOUYGUES

TRAVEL SERVICES

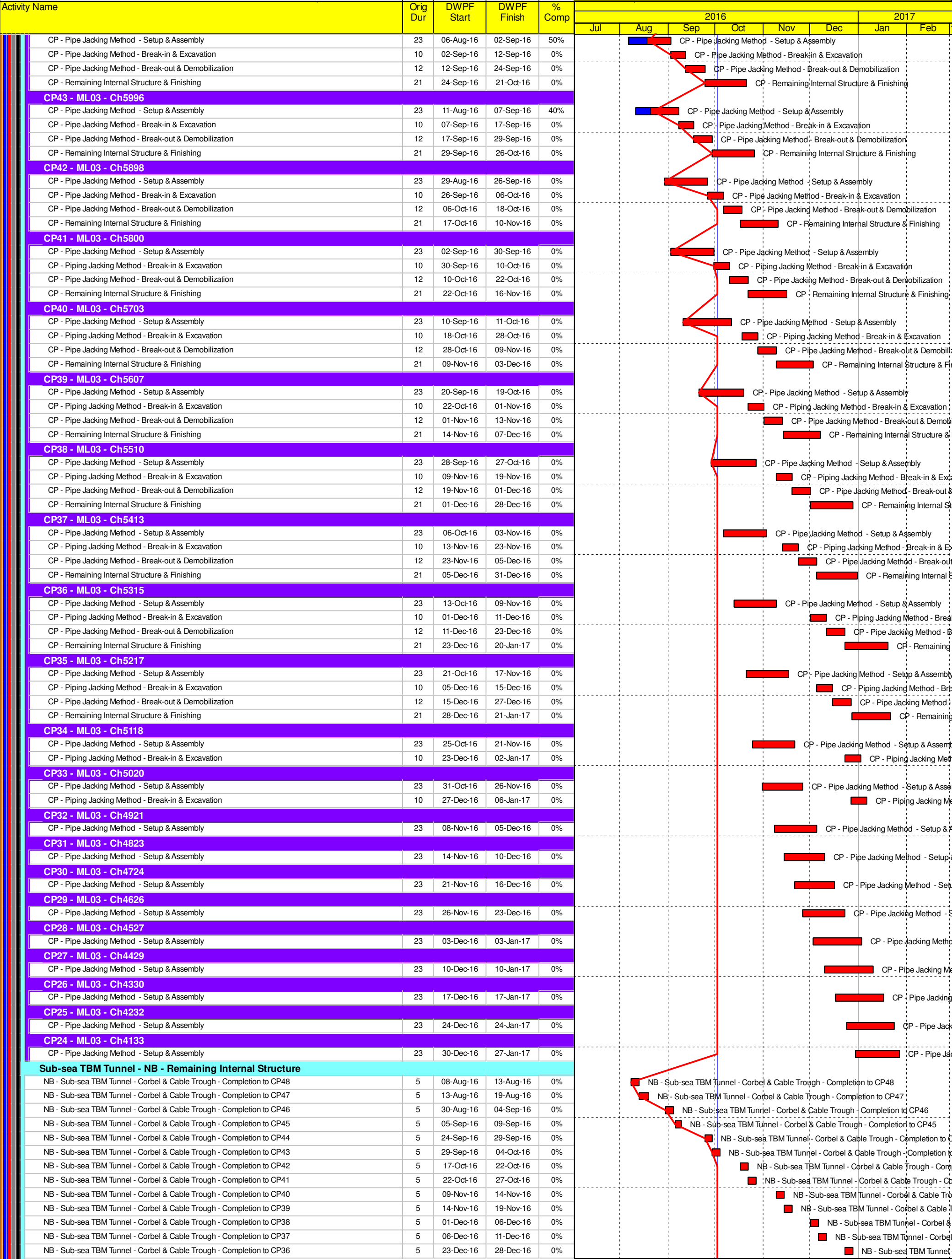
Date	Revision	Cheded	Approved
12-Feb-14	TMCLKDBJGEN.PRG.98507	WYu	SPo
08-Apr-14	TMCLKDBJGEN.PRG.98507 Rev.B	SPa	WYu
28-Aug-14	TMCLKDBJGEN.PRG.98507 Rev.C	CLa	WYu
30-Oct-15	TMCLKDBJGEN.PRG.98507 Rev.F	WYu	

Activity Name	Orig Dur	DWPF Start	DWPF Finish	% Comp	2016						2017	
					Jul	Aug	Sep	Oct	Nov	Dec	Jan	Feb
Excavation to FEL	5	12-Mar-16	17-Mar-16	0%								
Box Culvert Structure												
Pile cap construction	10	02-Apr-16	14-Apr-16	0%								
Base slab construction including kicker	6	22-Apr-16	28-Apr-16	0%								
Removal of strut S1	4	29-Apr-16	04-May-16	0%								
Walls & top slab construction	6	27-May-16	02-Jun-16	0%								
Pile A37/A35 CJ to Pile A35/A33 CJ												
ELS												
Excavation to 0.5m below strut S2	4	22-Feb-16	25-Feb-16	100%								
Installation of strut S2	6	26-Feb-16	03-Mar-16	0%								
Excavation to 0.5m below strut S1	5	07-Mar-16	11-Mar-16	0%								
Installation of strut S1	5	12-Mar-16	17-Mar-16	0%								
Excavation to FEL	5	18-Mar-16	23-Mar-16	0%								
Box Culvert Structure												
Pile cap construction	10	15-Apr-16	26-Apr-16	0%								
Base slab construction including kicker	6	29-Apr-16	06-May-16	0%								
Removal of strut S1	4	07-May-16	11-May-16	0%								
Pile A35/A33 CJ to Pile A33/P117 CJ												
ELS												
Excavation to 0.5m below strut S2	4	26-Feb-16	01-Mar-16	100%								
Installation of strut S2	6	02-Mar-16	08-Mar-16	0%								
Excavation to 0.5m below strut S1	5	12-Mar-16	17-Mar-16	0%								
Installation of strut S1	5	18-Mar-16	23-Mar-16	0%								
Excavation to FEL	5	24-Mar-16	01-Apr-16	0%								
Box Culvert Structure												
Pile cap construction	10	27-Apr-16	09-May-16	0%								
Base slab construction including kicker	6	10-May-16	17-May-16	0%								
Removal of strut S1	4	18-May-16	21-May-16	0%								
Removal of strut S2 & Backfilling up to required level	6	25-Jun-16	02-Jul-16	0%								
Pile A33/P117 CJ to Pile P113/P109 CJ												
ELS												
Excavation to 0.5m below strut S1	9	09-Mar-16	18-Mar-16	100%								
Installation of strut S1	5	19-Mar-16	24-Mar-16	100%								
Excavation to FEL	5	02-Apr-16	08-Apr-16	100%								
Box Culvert Structure												
Base slab construction including kicker	6	18-May-16	24-May-16	0%								
Removal of strut S1	4	25-May-16	28-May-16	0%								
Removal of strut S2 & Backfilling up to required level	6	04-Jul-16	09-Jul-16	0%								
Pile P113/P109 CJ to Pile P105/P101 CJ												
ELS												
Excavation to 0.5m below strut S1	9	17-Mar-16	30-Mar-16	100%								
Installation of strut S1	5	31-Mar-16	06-Apr-16	100%								
Excavation to FEL	5	09-Apr-16	14-Apr-16	100%								
Box Culvert Structure												
Base slab construction including kicker	6	25-May-16	31-May-16	0%								
Walls & top slab construction	6	25-Jun-16	02-Jul-16	0%								
Removal of strut S2 & Backfilling up to required level	6	11-Jul-16	16-Jul-16	0%								
Pile P105/P101 CJ to Pile P97/P93 CJ												
ELS												
Excavation to 0.5m below strut S1	9	29-Mar-16	08-Apr-16	100%								
Installation of strut S1	5	09-Apr-16	14-Apr-16	100%								
Excavation to FEL	5	15-Apr-16	20-Apr-16	100%								
Box Culvert Structure												
Walls & top slab construction	6	04-Jul-16	09-Jul-16	0%								
Removal of strut S2 & Backfilling up to required level	6	18-Jul-16	23-Jul-16	0%								
Pile P97/P93 CJ to Pile P89/P85 CJ												
ELS												
Excavation to 0.5m below strut S1	9	07-Apr-16	16-Apr-16	100%								
Installation of strut S1	5	18-Apr-16	22-Apr-16	100%								
Excavation to FEL	5	23-Apr-16	28-Apr-16	100%								
Box Culvert Structure												
Walls & top slab construction	6	11-Jul-16	16-Jul-16	0%								
Removal of strut S2 & Backfilling up to required level	6	25-Jul-16	30-Jul-16	0%								
Pile P89/P85 CJ to Pile P81/P77 CJ												
ELS												
Excavation to 0.5m below strut S1	9	15-Apr-16	25-Apr-16	100%								
Installation of strut S1	5	26-Apr-16	30-Apr-16	100%								
Excavation to FEL	5	03-May-16	07-May-16	100%								
Box Culvert Structure												
Walls & top slab construction	6	18-Jul-16	23-Jul-16	0%								
Removal of strut S2 & Backfilling up to required level	6	01-Aug-16	06-Aug-16	0%								
Pile P81/P77 CJ to Pile P73/P69 CJ												
ELS												
Excavation to FEL	5	11-May-16	17-May-16	100%								
Box Culvert Structure												
Removal of strut S1	4	30-Jun-16	05-Jul-16	0%								
Walls & top slab construction	6	25-Jul-16	30-Jul-16	0%								
Removal of strut S2 & Backfilling up to required level	6	08-Aug-16	13-Aug-16	0%								
Ch250-380 Marine Section												
Installation of Dewatering & Observation Well Ch 250-380	23	04-Nov-15	30-Nov-15	0%								
1st Pumping Test & Analysis	17	01-Dec-15	19-Dec-15	0%								
Toe Grouting	106	21-Dec-15	07-May-16	0%								
Remaining toe grouting Ch250-380	51	09-May-16	09-Jul-16	0%								
NewActivity	0			0%								
ELS & Structure												
Geotextile - Phase 2 Reclamation - along combi wall system	4	03-Dec-16	08-Dec-16	0%								
Sand Blanket - Phase 2 Reclamation - along combi wall system	6	08-Dec-16	15-Dec-16	0%								



Activity Name	Orig Dur	DWPF Start	DWPF Finish	% Comp	2016								2017	
					Jul	Aug	Sep	Oct	Nov	Dec	Jan	Feb		
ArchSD's comment	30	10-Jun-14	09-Jul-14	93%										
(I1) DDA for North Vent.Bldgs. GBP & Arch.Submission														
IPs Review	28	21-Aug-14	17-Sep-14	92%										
IP's No Objection Received	0		17-Sep-14	0%										
SO's Review	35	21-Aug-14	24-Sep-14	94%										
SO Approval with Condition Received	0		24-Sep-14	0%										
(I1) DDA for North & South Vent.Bldg. ABWF works														
Review & Comment by JV	24	18-Oct-14	14-Nov-14	100%										
Designer prepare DDA	15	15-Nov-14	02-Dec-14	100%										
Formal Submission of DDA to ICE/ IPs	0		02-Dec-14	100%										
Advanced Submission to SO	0		02-Dec-14	100%										
IPs/ SO'sAdvance Comments/ ICE Comments	28	03-Dec-14	30-Dec-14	88%										
Comments Received	0		30-Dec-14	0%										
Designer to Reply RiC + Update Submission	21	31-Dec-14	24-Jan-15	0%										
Submit Updated DDA to SO/ ICE/ IPs	0	26-Jan-15		0%										
ICE Approval & Issue Check Cert	18	26-Jan-15	14-Feb-15	0%										
Submit ICE Check Cert to SO	6	16-Feb-15	28-Feb-15	0%										
IPs Review	28	26-Jan-15	22-Feb-15	0%										
IP's No Objection Received	0		22-Feb-15	0%										
SO's Review	35	26-Jan-15	01-Mar-15	0%										
SO Approval with Condition Received	0		02-Mar-15	0%										
(I2) DDA for North Vent.Bldgs.Structural Design incl.Vent.Connections														
IPs Review	28	24-Dec-14	20-Jan-15	92%										
IP's No Objection Received	0		20-Jan-15	0%										
SO's Review	35	24-Dec-14	27-Jan-15	92%										
SO Approval with Condition Received	0		27-Jan-15	0%										
(I3) DDA for North & South Vent.Bldgs. Service and E&M Provision														
ICE Approval & Issue Check Cert	12	15-Jan-15	28-Jan-15	0%										
Submit ICE Check Cert to SO	6	29-Jan-15	04-Feb-15	0%										
IPs Review	28	15-Jan-15	11-Feb-15	92%										
IP's No Objection Received	0		11-Feb-15	0%										
SO's Review	35	15-Jan-15	18-Feb-15	91%										
SO Approval with Condition Received	0		18-Feb-15	0%										
Construction														
Substructure	120	04-Jul-16	24-Nov-16	0%										
Superstructure	120	24-Nov-16	28-Apr-17	0%										
North Reclamation (Phase 2)														
Construction														
Dredging - Phase 2 (Zone G)	18	03-Dec-16	24-Dec-16	0%										
VS - Rock Grade 400 - Zone G	9	24-Dec-16	07-Jan-17	0%										
Geotextile (Zone G)	11	24-Dec-16	10-Jan-17	0%										
Sand Blanket (Zone G)	21	31-Dec-16	26-Jan-17	0%										
North Surface Roadworks, Utility & Drainage works														
Design Submission														
(C2) DDA for Sewerage, Drainage, Waterworks & Utility works for North Landfall														
IPs Review	28	08-Nov-14	05-Dec-14	100%										
IP's No Objection Received	0		05-Dec-14	100%										
SO's Review	35	08-Nov-14	12-Dec-14	100%										
SO Approval with Condition Received	0		12-Dec-14	100%										
Sub-sea Tunnel														
Sub-sea TBM Tunnelling														
Major Procurement														
Precast Semgnet ID12.40 - Production for Sub-sea TBM Tunnel														
ID12.40 TBM Segment Ring Fabrication - 12 rings per day	300	22-Nov-14	19-Dec-15	85%										
Design Submission														
(G1) DDA for TBM Tunnel Lining Structural Design - Sub-sea tunnel														
Sub-sea TBM Tunnel Segment - Fabrication	265	06-Oct-14	29-Aug-15	85%										
(G3) DDA for TBM Tunnel Internal Structures (Sub-sea)														
Sub-sea Tunnel - Precast Gallery Fabrication	244	22-Jan-15	21-Nov-15	59%										
Construction														
Sub-sea TBM Tunnel - NB ID12.2m - S881														
NB - Sub-sea TBM Tunnel - CDG with Saturation (Ch6135 to 6100 - 35m)	3	11-Jun-16	14-Jun-16	100%										
NB - Sub-sea TBM Tunnel - Transition with Saturation (Ch6100 to 6050 - 50m)	9	14-Jun-16	24-Jun-16	100%										
NB - Sub-sea TBM Tunnel - CDG+Boulder with Saturation (Ch6050 to 6010 - 40m)	5	24-Jun-16	29-Jun-16	100%										
NB - Sub-sea TBM Tunnel - CDG with Saturation (Ch6010 to 5830 - 180m)	14	29-Jun-16	13-Jul-16	100%										
NB - Sub-sea TBM Tunnel - CDG+Boulder with Saturation (Ch5830 to 5810 - 20m)	2	13-Jul-16	16-Jul-16	100%										
NB - Sub-sea TBM Tunnel - Transition with Saturation (Ch5810 to 5740 - 70m)	12	16-Jul-16	28-Jul-16	100%										
NB - Sub-sea TBM Tunnel - CDG+Boulder with Saturation (Ch5740 to 5550 - 190m)	22	28-Jul-16	20-Aug-16	100%										
NB - Sub-sea TBM Tunnel - CDG with Saturation (Ch5550 to 5330 - 220m)	18	20-Aug-16	07-Sep-16	100%										
NB - Sub-sea TBM Tunnel - CDG with Saturation (Ch5330 to 4950 - 380m)	30	07-Sep-16	07-Oct-16	0%										
NB - Sub-sea TBM Tunnel - CDG with Saturation (Ch4950 to 4870 - 80m)	6	07-Oct-16	13-Oct-16	0%										
NB - Sub-sea TBM Tunnel - ALLUVIUMS silty with Trimix (Ch4870 to 4750 - 120m)	8	13-Oct-16	21-Oct-16	0%										
NB - Sub-sea TBM Tunnel - ALLUVIUMS sandy with Trimix (Ch4750 to 4600 - 150m)	10	21-Oct-16	31-Oct-16	0%										
NB - Sub-sea TBM Tunnel - ALLUVIUMS sandy with Trimix (Ch4600 to 4400 - 200m)	13	31-Oct-16	13-Nov-16	0%										
NB - Sub-sea TBM Tunnel - ALLUVIUMS sandy with Trimix (Ch4400 to 4300 - 100m)	6	13-Nov-16	19-Nov-16	0%										
NB - Sub-sea TBM Tunnel - ALLUVIUMS sandy with Trimix (Ch4300 to 4200 - 100m)	6	19-Nov-16	25-Nov-16	0%										
NB - Sub-sea TBM Tunnel - ALLUVIUMS silty with Trimix (Ch4200 to 3830 - 370m)	26	25-Nov-16	21-Dec-16	0%										
NB - Sub-sea TBM Tunnel - ALLUVIUMS sandy with Trimix (Ch3830 to 3710 - 120m)	8	21-Dec-16	29-Dec-16	0%										
NB - Sub-sea TBM Tunnel - ALLUVIUMS silty with Trimix (Ch3710 to 3590 - 120m)	8	29-Dec-16	06-Jan-17	0%										
Sub-sea TBM Tunnel - SB ID12.2m - S882														
SB - Sub-sea TBM Tunnel - Transition with Saturation (Ch6451 to 6371 - 80m)	17	30-Jan-16	19-Feb-16	100%										
SB - Sub-sea TBM Tunnel - CDG+Boulder with Saturation (Ch6321 to 6281 - 40m)	5	29-Feb-16	05-Mar-16	100%										
SB - Sub-sea TBM Tunnel - CDG with Saturation (Ch5571 to 5351 - 220m)	18	30-Jun-16	19-Jul-16	100%										
SB - Sub-sea TBM Tunnel - CDG with Saturation (Ch5351 to 4971 - 380m)	30	19-Jul-16	19-Aug-16	100%										
SB - Sub-sea TBM Tunnel - CDG with Saturation (Ch4971 to 4891 - 80m)	6	19-Aug-16	25-Aug-16	100%										
SB - Sub-sea TBM Tunnel - ALLUVIUMS silty with Trimix (Ch4891 to 4771 - 120)	8	25-Aug-16	02-Sep-16	100%										
SB - Sub-sea TBM Tunnel - ALLUVIUMS sandy with Trimix (Ch4771 to 4621 - 150m)	10	02-Sep-16	12-Sep-16	100%										

Activity Name	Orig Dur	DWPF Start	DWPF Finish	% Comp	2016								2017	
					Jul	Aug	Sep	Oct	Nov	Dec	Jan	Feb		
SB - Sub-sea TBM Tunnel - ALLUVIUMS sandy with Trimix (Ch4621 to 4421 - 200m)	13	12-Sep-16	25-Sep-16	100%										
SB - Sub-sea TBM Tunnel - ALLUVIUMS silty with Trimix (Ch4421 to 4321 - 100m)	6	25-Sep-16	01-Oct-16	80%										
SB - Sub-sea TBM Tunnel - ALLUVIUMS sandy with Trimix (Ch4321 to 4221 - 100m)	6	01-Oct-16	07-Oct-16	0%										
SB - Sub-sea TBM Tunnel - ALLUVIUMS silty with Trimix (Ch4221 to 3851 - 370m)	26	07-Oct-16	02-Nov-16	0%										
SB - Sub-sea TBM Tunnel - ALLUVIUMS sandy with Trimix (Ch3851 to 3731 - 120m)	8	02-Nov-16	10-Nov-16	0%										
SB - Sub-sea TBM Tunnel - ALLUVIUMS silty with Trimix (Ch3731 to 3611 - 120m)	8	10-Nov-16	18-Nov-16	0%										
SB - Sub-sea TBM Tunnel - ALLUVIUMS sandy with Trimix (Ch3611 to 3481 - 130m)	8	18-Nov-16	26-Nov-16	0%										
SB - Sub-sea TBM Tunnel - ALLUVIUMS silty with Trimix (Ch3481 to 3381 - 100m)	7	26-Nov-16	03-Dec-16	0%										
SB - Sub-sea TBM Tunnel - ALLUVIUMS sandy with Trimix (Ch3381 to 3181 - 200m)	13	03-Dec-16	16-Dec-16	0%										
SB - Sub-sea TBM Tunnel - ALLUVIUMS silty with Trimix (Ch3181 to 3081 - 100m)	7	16-Dec-16	23-Dec-16	0%										
SB - Sub-sea TBM Tunnel - ALLUVIUMS silty with Trimix (Ch3081 to 2941 - 140m)	10	23-Dec-16	02-Jan-17	0%										
Sub-sea TBM Tunnel - NB - Precast Invert Gallery														
NB - Sub-sea TBM Tunnel - Precast Invert Gallery - Completion to CP47	12	11-Jun-16	24-Jun-16	100%										
NB - Sub-sea TBM Tunnel - Precast Invert Gallery - Completion to CP46	9	24-Jun-16	03-Jul-16	100%										
NB - Sub-sea TBM Tunnel - Precast Invert Gallery - Completion to CP45	10	03-Jul-16	13-Jul-16	100%										
NB - Sub-sea TBM Tunnel - Precast Invert Gallery - Completion to CP44	14	13-Jul-16	28-Jul-16	100%										
NB - Sub-sea TBM Tunnel - Precast Invert Gallery - Completion to CP43	11	28-Jul-16	08-Aug-16	100%										
NB - Sub-sea TBM Tunnel - Precast Invert Gallery - Completion to CP42	11	08-Aug-16	20-Aug-16	100%										
NB - Sub-sea TBM Tunnel - Precast Invert Gallery - Completion to CP41	9	20-Aug-16	29-Aug-16	100%										
NB - Sub-sea TBM Tunnel - Precast Invert Gallery - Completion to CP40	9	29-Aug-16	07-Sep-16	100%										
NB - Sub-sea TBM Tunnel - Precast Invert Gallery - Completion to CP39	3	07-Sep-16	10-Sep-16	100%										
NB - Sub-sea TBM Tunnel - Precast Invert Gallery - Completion to CP38	8	12-Sep-16	20-Sep-16	0%										
NB - Sub-sea TBM Tunnel - Precast Invert Gallery - Completion to CP37	8	20-Sep-16	28-Sep-16	0%										
NB - Sub-sea TBM Tunnel - Precast Invert Gallery - Completion to CP36	8	28-Sep-16	06-Oct-16	0%										
NB - Sub-sea TBM Tunnel - Precast Invert Gallery - Completion to CP35	7	06-Oct-16	13-Oct-16	0%										
NB - Sub-sea TBM Tunnel - Precast Invert Gallery - Completion to CP34	8	13-Oct-16	21-Oct-16	0%										
NB - Sub-sea TBM Tunnel - Precast Invert Gallery - Completion to CP33	4	21-Oct-16	25-Oct-16	0%										
NB - Sub-sea TBM Tunnel - Precast Invert Gallery - Completion to CP32	6	25-Oct-16	31-Oct-16	0%										
NB - Sub-sea TBM Tunnel - Precast Invert Gallery - Completion to CP31	8	31-Oct-16	08-Nov-16	0%										
NB - Sub-sea TBM Tunnel - Precast Invert Gallery - Completion to CP30	6	08-Nov-16	14-Nov-16	0%										
NB - Sub-sea TBM Tunnel - Precast Invert Gallery - Completion to CP29	6	14-Nov-16	20-Nov-16	0%										
NB - Sub-sea TBM Tunnel - Precast Invert Gallery - Completion to CP28	6	20-Nov-16	26-Nov-16	0%										
NB - Sub-sea TBM Tunnel - Precast Invert Gallery - Completion to CP27	7	26-Nov-16	03-Dec-16	0%										
NB - Sub-sea TBM Tunnel - Precast Invert Gallery - Completion to CP26	7	03-Dec-16	10-Dec-16	0%										
NB - Sub-sea TBM Tunnel - Precast Invert Gallery - Completion to CP25	7	10-Dec-16	17-Dec-16	0%										
NB - Sub-sea TBM Tunnel - Precast Invert Gallery - Completion to CP24	7	17-Dec-16	24-Dec-16	0%										
NB - Sub-sea TBM Tunnel - Precast Invert Gallery - Completion to CP23	6	24-Dec-16	30-Dec-16	0%										
NB - Sub-sea TBM Tunnel - Precast Invert Gallery - Completion to CP22	7	30-Dec-16	06-Jan-17	0%										
Sub-sea TBM Tunnel - SB - Precast Invert Gallery														
SB - Sub-sea TBM Tunnel - Precast Invert Gallery - Completion to CP42	13	11-Jun-16	25-Jun-16	100%										
SB - Sub-sea TBM Tunnel - Precast Invert Gallery - Completion to CP41	10	25-Jun-16	05-Jul-16	100%										
SB - Sub-sea TBM Tunnel - Precast Invert Gallery - Completion to CP40	8	05-Jul-16	13-Jul-16	100%										
SB - Sub-sea TBM Tunnel - Precast Invert Gallery - Completion to CP39	9	13-Jul-16	23-Jul-16	100%										
SB - Sub-sea TBM Tunnel - Precast Invert Gallery - Completion to CP38	7	23-Jul-16	30-Jul-16	100%										
SB - Sub-sea TBM Tunnel - Precast Invert Gallery - Completion to CP37	8	30-Jul-16	07-Aug-16	100%										
SB - Sub-sea TBM Tunnel - Precast Invert Gallery - Completion to CP36	8	07-Aug-16	16-Aug-16	100%										
SB - Sub-sea TBM Tunnel - Precast Invert Gallery - Completion to CP35	7	16-Aug-16	23-Aug-16	100%										
SB - Sub-sea TBM Tunnel - Precast Invert Gallery - Completion to CP34	7	23-Aug-16	30-Aug-16	100%										
SB - Sub-sea TBM Tunnel - Precast Invert Gallery - Completion to CP33	16	30-Aug-16	15-Sep-16	100%										
SB - Sub-sea TBM Tunnel - Precast Invert Gallery - Completion to CP32	6	15-Sep-16	21-Sep-16	100%										
SB - Sub-sea TBM Tunnel - Precast Invert Gallery - Completion to CP31	10	21-Sep-16	01-Oct-16	100%										
SB - Sub-sea TBM Tunnel - Precast Invert Gallery - Completion to CP30	7	01-Oct-16	08-Oct-16	0%										
SB - Sub-sea TBM Tunnel - Precast Invert Gallery - Completion to CP29	6	08-Oct-16	14-Oct-16	0%										
SB - Sub-sea TBM Tunnel - Precast Invert Gallery - Completion to CP28	11	14-Oct-16	25-Oct-16	0%										
SB - Sub-sea TBM Tunnel - Precast Invert Gallery - Completion to CP27	6	25-Oct-16	31-Oct-16	0%										
SB - Sub-sea TBM Tunnel - Precast Invert Gallery - Completion to CP26	11	31-Oct-16	11-Nov-16	0%										
SB - Sub-sea TBM Tunnel - Precast Invert Gallery - Completion to CP25	6	11-Nov-16	17-Nov-16	0%										
SB - Sub-sea TBM Tunnel - Precast Invert Gallery - Completion to CP24	8	17-Nov-16	25-Nov-16	0%										
SB - Sub-sea TBM Tunnel - Precast Invert Gallery - Completion to CP23	13	25-Nov-16	08-Dec-16	0%										
SB - Sub-sea TBM Tunnel - Precast Invert Gallery - Completion to CP22	8	08-Dec-16	16-Dec-16	0%										
SB - Sub-sea TBM Tunnel - Precast Invert Gallery - Completion to CP21	9	16-Dec-16	25-Dec-16	0%										
SB - Sub-sea TBM Tunnel - Precast Invert Gallery - Completion to CP20	7	25-Dec-16	01-Jan-17	0%										
SB - Sub-sea TBM Tunnel - Precast Invert Gallery - Completion to CP19	7	01-Jan-17	08-Jan-17	0%										
Sub-sea Tunnel Cross Passage & Internal Structure														
Construction														
Sub-sea Tunnel Cross Passage														
CP48 - ML03 - Ch6489														
CP - Pipe Jacking Method - Setup & Assembly	23	20-Jun-16	18-Jul-16	100%										
CP - Piping Jacking Method - Break-in & Excavation	10	18-Jul-16	28-Jul-16	100%										
CP - Pipe Jacking Method - Break-out & Demobilization	11	28-Jul-16	08-Aug-16	100%										
CP - Remaining Internal Structure & Finishing	21	08-Aug-16	01-Sep-16	0%										
CP47 - ML03 - Ch6390														
CP - Pipe Jacking Method - Setup & Assembly	23	24-Jun-16	22-Jul-16	100%										
CP - Piping Jacking Method - Break-in & Excavation	10	22-Jul-16	01-Aug-16	100%										
CP - Pipe Jacking Method - Break-out & Demobilization	12	01-Aug-16	13-Aug-16	100%										
CP - Remaining Internal Structure & Finishing	21	13-Aug-16	07-Sep-16	0%										
CP46 - ML03 - Ch6292														
CP - Pipe Jacking Method - Setup & Assembly	23	12-Jul-16	08-Aug-16	60%										
CP - Pipe Jacking Method - Break-in & Excavation	10	08-Aug-16	18-Aug-16	0%										
CP - Pipe Jacking Method - Break-out & Demobilization	12	18-Aug-16	30-Aug-16	0%										
CP - Remaining Internal Structure & Finishing	21	30-Aug-16	24-Sep-16	0%										
CP45 - ML03 - Ch6193														
CP - Pipe Jacking Method - Setup & Assembly	23	18-Jul-16	13-Aug-16	70%										
CP - Pipe Jacking Method - Break-in & Excavation	10	13-Aug-16	23-Aug-16	0%										
CP - Pipe Jacking Method - Break-out & Demobilization	12	23-Aug-16	04-Sep-16	0%										
CP - Remaining Internal Structure & Finishing	21	05-Sep-16	29-Sep-16	0%										
CP44 - ML03 - Ch6095														



Page 9 of 11

Project ID: TMCLK DWPF 16W25

Data Date: 02-Oct-16

Planned Bar

Planned Bar - Critical

Planned Milestone

Planned Milestone

Progress bar

Progress Milestone

TMCLK - Northern Connection Sub-Sea Tunnel Section

Detailed Works Programme (Rev. F)

Three Months Rolling Programme

Progress as of 02-Oct-16

香港寶嘉

Dragages HongKong

A member of the Bouygues Construction group

Dragages - Bouygues Joint Venture 寶嘉 · 布依格聯營

Bouygues

TRAVAILIA PUBLICS

Date	Revision	Checked	Approved
12-Feb-14	TMCLKDBJGEN/PRG/98507	WYu	SPo
18-Apr-14	TMCLKDBJGEN/PRG/98507 Rev.B	SPs	WYu
28-Aug-14	TMCLKDBJGEN/PRG/98507 Rev.C	CLa	WYu
30-Oct-15	TMCLKDBJGEN/PRG/98507 Rev.F	WYu	WYu

Activity Name	Orig Dur	DWPF Start	DWPF Finish	% Comp	2016						2017	
					Jul	Aug	Sep	Oct	Nov	Dec	Jan	Feb
C&C Tunnel - 1st 85m - Backfilling	4	10-Aug-16	13-Aug-16	0%								
C&C Tunnel - 2nd 85m - Tunnel Structure	83	14-Jun-16	20-Sep-16	0%								
C&C Tunnel - 2nd 85m - Backfilling	9	21-Sep-16	30-Sep-16	0%								
C&C Tunnel - 3rd 85m - Excavation by vertical mean	25	14-Jun-16	13-Jul-16	0%								
C&C Tunnel - 3rd 85m - Tunnel Structure	83	26-Jul-16	02-Nov-16	0%								
C&C Tunnel - 3rd 85m - Backfilling	15	03-Nov-16	19-Nov-16	0%								
C&C Tunnel - 4th 85m - Excavation by ramp	21	30-Jun-16	25-Jul-16	0%								
C&C Tunnel - 4th 85m - Excavation by vertical mean	35	26-Jul-16	03-Sep-16	0%								
C&C Tunnel - 4th 85m - Tunnel Structure	83	05-Sep-16	13-Dec-16	0%								
C&C Tunnel - 4th 85m - Backfilling	14	14-Dec-16	31-Dec-16	0%								
C&C Tunnel - 5th 85m - Excavation by ramp	23	26-Jul-16	20-Aug-16	0%								
C&C Tunnel - 5th 85m - Excavation by vertical mean	44	22-Aug-16	14-Oct-16	0%								
C&C Tunnel - 5th 85m - Tunnel Structure	83	19-Oct-16	26-Jan-17	0%								
C&C Tunnel - 6th 85m - Excavation by ramp	27	22-Aug-16	22-Sep-16	0%								
C&C Tunnel - 6th 85m - Excavation by vertical mean	52	23-Sep-16	24-Nov-16	0%								
C&C Tunnel - 6th 85m - Tunnel Structure	83	29-Nov-16	15-Mar-17	0%								
C&C Tunnel - 7th 152m - Excavation by ramp	15	03-Nov-16	19-Nov-16	0%								
C&C Tunnel - 7th 67m - Excavation by vertical mean	42	21-Nov-16	11-Jan-17	0%								
Intermediate Slab	164	20-Dec-16	18-Jul-17	0%								
South Retrieval Shaft												
Design Submission												
(F4) Gantry Crane Support/Foundations in Southern Landfall												
Preparation of IFA Gantry Crane / Foundation	18	27-Jul-15	15-Aug-15	0%								
Review & Comment by JV	18	17-Aug-15	05-Sep-15	0%								
Designer prepare IFA	10	07-Sep-15	17-Sep-15	0%								
Formal Submission of IFA to ICE/ IPs	0		17-Sep-15	0%								
Advanced Submission to SO	0		17-Sep-15	0%								
IPs/ SO'sAdvance Comments/ ICE Comments	28	18-Sep-15	15-Oct-15	0%								
Method Statement Submission												
Method Statement of Construction Methodology of Retrieval Shaft												
Preparation Method Statement for Retrieval Shaft	25	24-Aug-15	21-Sep-15	0%								
Submit Method Statement to SO	0		21-Sep-15	0%								
SO Reviews & Comments	28	22-Sep-15	19-Oct-15	0%								
Re-submission	18	20-Oct-15	10-Nov-15	0%								
Construction												
South Landfall GI Works/DW Setting Up	48	06-Aug-15	02-Oct-15	13%								
South Retrieval Shaft - Diaphragm Wall	98	03-Oct-15	29-Jan-16	19%								
Retrieval Shaft - Excavation - Soft (other than Fill)	140	15-Apr-16	30-Sep-16	0%								
Retrieval Shaft - Temp. Slab/Prepare for TBM Breakthrough	48	03-Oct-16	28-Nov-16	0%								
South Approach Ramp												
Construction												
Approach Ramp (CH1580-1850) - Pipe Pile/Sheet Piles Wall	126	03-Oct-15	09-Mar-16	0%								
Approach Ramp (CH1580-1850) - Tension Piles	103	03-Oct-15	04-Feb-16	0%								
South Ventilation Building												
Design Submission												
(I1) DDA for South Vent.Bldg. GBP & Arch.Submission												
IPs Review	28	22-Dec-14	18-Jan-15	88%								
IP's No Objection Received	0		18-Jan-15	0%								
SO's Review	35	22-Dec-14	25-Jan-15	91%								
SO Approval with Condition Received	0		26-Jan-15	0%								
(I2) DDA for South Vent.Bldg. Foundation Design												
Review & Comment by JV	18	27-Apr-15	18-May-15	88%								
Designer prepare DDA	10	19-May-15	30-May-15	0%								
Formal Submission of DDA to ICE/ IPs	0		30-May-15	0%								
Advanced Submission to SO	0		30-May-15	0%								
IPs/ SO'sAdvance Comments/ ICE Comments	28	31-May-15	27-Jun-15	0%								
Comments Received	0		27-Jun-15	0%								
Designer to Reply RiC + Update Submission	21	29-Jun-15	23-Jul-15	0%								
Submit Updated DDA to SO/ ICE/ IPs	0	24-Jul-15		0%								
ICE Approval & Issue Check Cert	18	24-Jul-15	13-Aug-15	0%								
IPs Review	28	24-Jul-15	20-Aug-15	0%								
SO's Review	35	24-Jul-15	27-Aug-15	0%								
(I2) DDA for South Vent.Bldg.Structural Design incl.Vent.Connections												
Review & Comment by JV	18	18-Feb-15	17-Mar-15	76%								
Designer prepare DDA	10	18-Mar-15	28-Mar-15	0%								
Formal Submission of DDA to ICE/ IPs	0		28-Mar-15	0%								
Advanced Submission to SO	0		28-Mar-15	0%								
IPs/ SO'sAdvance Comments/ ICE Comments	28	29-Mar-15	25-Apr-15	0%								
Comments Received	0		25-Apr-15	0%								
Designer to Reply RiC + Update Submission	21	27-Apr-15	21-May-15	0%								
Submit Updated DDA to SO/ ICE/ IPs	0	22-May-15		0%								
ICE Approval & Issue Check Cert	18	22-May-15	12-Jun-15	0%								
IPs Review	28	22-May-15	18-Jun-15	0%								
SO's Review	35	22-May-15	25-Jun-15	0%								
(J1) DDA Temp.works for Construction of Sth.Vent.Bldg.												
Designer to Reply RiC + Update Submission	21	24-Aug-15	16-Sep-15	90%								
Submit Updated DDA to SO/ ICE/ IPs	0	17-Sep-15		0%								
ICE Approval & Issue Check Cert	12	17-Sep-15	02-Oct-15	0%								
Submit ICE Check Cert to SO	6	03-Oct-15	09-Oct-15	0%								
IPs Review	28	17-Sep-15	14-Oct-15	0%								
IP's No Objection Received	0		14-Oct-15	0%								
SO's Review	35	17-Sep-15	21-Oct-15	0%								
SO Approval with Condition Received	0		22-Oct-15	0%								
Construction												
Mobilization & Setting Up Piling Rigs	64	06-Aug-15	22-Oct-15	0%								
S -Sheet Piling	48	23-Oct-15	17-Dec-15	0%								
S- Excavation	100	09-May-16	05-Sep-16	0%								

Activity Name	Orig Dur	DWPF Start	DWPF Finish	% Comp	2016								2017	
					Jul	Aug	Sep	Oct	Nov	Dec	Jan	Feb		
Substructure	95	06-Sep-16	30-Dec-16	0%									Substructure	
Superstructure	65	31-Dec-16	24-Mar-17	0%										
South Surface Roadworks, Utility & Drainage works														
Design Submission														
(E1) AIP - Southern Landfall Seawall Modification														
Designer Prepare AIP - Southern Landfall Seawall Modification	36	08-Nov-16	19-Dec-16	100%									Designer Prepare AIP - Southe	
Review & Comment by JV	12	20-Dec-16	05-Jan-17	100%									Review & Comment by	
(E1) DDA - Southern Landfall Seawall Modification														
IPs/ SO's Advance Comments/ ICE Comments	28	07-Jun-17	04-Jul-17	100%										
Comments Received	0		04-Jul-17	100%										
Designer to Reply RtC + Update Submission	21	05-Jul-17	28-Jul-17	83.33%										
Submit Updated DDA to SO/ ICE/ IPs	0	29-Jul-17		0%										
ICE Approval & Issue Check Cert	12	29-Jul-17	11-Aug-17	0%										
Submit ICE Check Cert to SO	6	12-Aug-17	18-Aug-17	0%										
IPs Review	28	29-Jul-17	25-Aug-17	0%										
IP's No Objection Received	0		25-Aug-17	0%										
SO's Review	35	29-Jul-17	01-Sep-17	0%										
SO Approval with Condition Received	0		01-Sep-17	0%										
(E3) DDA for Sewerage, Drainage, Waterworks & Utility works for South Landfall														
IPs Review	28	05-Mar-15	01-Apr-15	88%										
IP's No Objection Received	0		01-Apr-15	0%										
SO's Review	35	05-Mar-15	08-Apr-15	91%										
SO Approval with Condition Received	0		08-Apr-15	0%										
Method Statement Submission														
Method Statement of Ground Treatment for TBMs Passing under Southern Landfall Seawall														
Preparation Method Statement for Ground Improvement in South Landfall	9	20-Jul-15	29-Jul-15	0%										
Submit Method Statement to SO	0		29-Jul-15	0%										
SO Reviews & Comments	28	30-Jul-15	26-Aug-15	0%										
Re-submission	6	27-Aug-15	02-Sep-15	0%										
SO's Review	28	03-Sep-15	30-Sep-15	0%										
SO's Approval	0		30-Sep-15	0%										
Construction														
Temporary Platform for Ground Treatment for TBM passing under Southern Seawall	48	06-Aug-15	02-Oct-15	0%										
Grouting Treatment for TBM passing under Southern Seawall	339	03-Oct-15	25-Nov-16	0%									Grouting Treatment for TBM passing under	
Testing & Commissioning/Inspection & Handover														
Final Inspection & Handover														
Design Submission														
(A12) Maintenance Matrix														
Prepare Re-submission	18	12-Mar-16	06-Apr-16	88%										
2nd Submission	0		06-Apr-16	0%										
SO's Condition Approval	35	07-Apr-16	11-May-16	0%										
(A13) Operation & Maintenance Manual														
Preparation of Operation and Maintenance Manual	48	24-Dec-15	27-Feb-16	0%										
1st Submission	0		27-Feb-16	0%										
SO's Comments for 1st Submission	35	28-Feb-16	02-Apr-16	0%										
(A14) As-built & As-fabricated Drawings														
Preparation of As-built and As-fabricated Drawings	48	24-Dec-15	27-Feb-16	0%										
1st Submission	0		27-Feb-16	0%										
SO's Comments for 1st Submission	35	28-Feb-16	02-Apr-16	0%										
(A15) Health & Safety File incl.As-built Dwgs & Records,Maintenance Schedules,O&M Manual														
Preparation of Health and Safety File including as-built drawings and records, maintenance schedules, op	48	24-Dec-15	27-Feb-16	0%									drawings and records, maintenance schedules, operation and mai	
1st Submission	0		27-Feb-16	0%										
SO's Comments for 1st Submission	35	28-Feb-16	02-Apr-16	0%										