

Activity Name				Orig Dur	DWPF Start	DWPF Finish	2016							
							Feb	Mar	Apr	May	Jun	Jul	Aug	Sep
TMCLK - Northern Connection Sub-Sea Tunnel Section														
Contract Dates														
Site Possession Date														
Portions: X1,(N10,11,13 & 14) - Sth Landfall				0	06-Aug-15									
General Submissions														
Environmental														
Environmental Permit Submissions														
Supplementary WMP of C&C Tunnel at Sth.Landfall														
Supplementary WMP of C&C Tunnel at Sth.Landfall				0		28-Jun-14								
Sediment Quality Report/Dumping Permit														
Southern Landfall														
Southern landfall - Commencement of Shaft & C&C Tunnel Dwall				0	03-Oct-15		Dwall							
Southern Landfall - Retrieval Shaft Excavation to tentative MD layer				0	15-Apr-16				◆ Southern Landfall - Retrieval Shaft Excavation to tentative MD layer					
Southern Landfall - Commencement of C&C Tunnel Excavation				0	03-Mar-16			◆ Southern Landfall - Commencement of C&C Tunnel Excavation						
Southern Landfall - Commencement of C&C Tunnel to tentative MD layer				0	02-Apr-16				◆ Southern Landfall - Commencement of C&C Tunnel to tentative MD layer					
Sediment Sampling & Testing Plan (SSTP) - if required														
Complete SSTP and Obtain EPD's approval				24	17-Feb-15	23-Mar-15								
Sediment Quality Report (SQR) - if required														
Advance Ground Investigation works for Sediment sampling				24	24-Mar-15	24-Apr-15								
Sediment Sample Testing & Report preparation				120	25-Apr-15	16-Sep-15								
Dumping Permit for Load Dumping (Loading Permit) - if required														
Finalize the appivation doucment and submit to EPD - for Dwall				24	20-Jan-15	16-Feb-15								
Notify the results and issue Loading Permit for Local & Cross Boundary Crossing - for Dwall				24	17-Feb-15	23-Mar-15								
Cross Boundary Dumping Permit														
Apply for Cross Boundary Dumping Permit				24	14-Jan-16	17-Feb-16	Apply for Cross Boundary Dumping Permit							
Cross Boundary Dumping Approval				24	18-Feb-16	16-Mar-16	Cross Boundary Dumping Approval							
Issuance of PRC Permit for Cat L, Mp				0		16-Mar-16	Issuance of PRC Permit for Cat L, Mp							
General Design Submissions														
(G6) IFA for Tunnel GBP														
SO's Review				35	29-Apr-14	02-Jun-14								
SO Approval with Condition Received				0		03-Jun-14								
PAYMENT MILESTONE														
Design and Design Checking of the Works														
MS 2.20.3 Approve DDA for Cross Passages by the Supervising Officer by the Supervising Officer				0		31-Mar-15								
MS 2.32 Approve DDA for Approach Ramp Structures to Cut-and-cover Tunnels by the Supervising Officer				0		30-Apr-15								
MS 2.44 Approve DDA for South Ventilation Building by the Supervising Officer				0		30-Jun-15								
MS 2.48 Approve DDA for North Ventilation Building by the Supervising Officer				0		31-Jan-15								
MS 2.51 Submit DDA for Facilities Provision for TCSS				0		29-Nov-14								
MS 2.52 Approve DDA for Facilities Provision for TCSS by the Supervising Officer				0		28-Feb-15								
MS 2.56 Approve DDA for Drainage, Sewerage, Waterworks and Utilities at Southern Landfall by the Supervising Officer				0		30-Apr-15								
MS 2.60 Approve DDA for Drainage, Sewerage, Waterworks and Utilities at Northern Landfall by the Supervising Officer				0		31-Dec-14								
MS 2.69 Submit draft Operation and Maintenance Manual for all Tunnels and Cross Passgaes				0		29-Feb-16	◆ MS 2.69 Submit draft Operation and Maintenance Manual for all Tunnels and Cross Passgaes							
MS 2.70 Accept Operation and Maintenance Manual for all Tunnels and Cross Passgaes by the Supervising Officer				0		30-Jun-16		◆ MS 2.70 Accept Operation and Maintenance Manual for all Tunnels and Cross Passgaes by the Supervising Officer						
MS 2.71 Submit draft Operation and Maintenance Manual for all works except Tunnels and Cross Passgaes				0		29-Feb-16	◆ MS 2.71 Submit draft Operation and Maintenance Manual for all works except Tunnels and Cross Passgaes							
MS 2.72 Accept Operation and Maintenance Manual for all works except Tunnels and Cross Passgaes by the Supervising Offic				0		30-Jun-16		◆ MS 2.72 Accept Operation and Maintenance Manual for all works except Tunnels and Cross Passgaes by the Supervising Offic						
TBM Tunnel														
MS 3.3.4 Complete walls of retrieval shaft				0		30-Jan-16	MS 3.3.4 Complete walls of retrieval shaft							
MS 3.3.7 Completion of excavation, support and permanent lining for 1% of the total length (measured on plan) of the Nor				0		31-Dec-15	MS 3.3.7 Completion of excavation, support and permanent lining for 1% of the total length (measured on plan) of the Nor							
MS 3.3.8 Completion of excavation, support and permanent lining for 2% of the total length (measured on plan) of the Nor				0		31-Dec-15	MS 3.3.8 Completion of excavation, support and permanent lining for 2% of the total length (measured on plan) of the Nor							
MS 3.3.9 Completion of excavation, support and permanent lining for 3% of the total length (measured on plan) of the Nor				0		31-Dec-15	MS 3.3.9 Completion of excavation, support and permanent lining for 3% of the total length (measured on plan) of the Nor							
MS 3.3.10 Completion of excavation, support and permanent lining for 4% of the total length (measured on plan) of the No				0		30-Jan-16	MS 3.3.10 Completion of excavation, support and permanent lining for 4% of the total length (measured on plan) of the No							
MS 3.3.11 Completion of excavation, support and permanent lining for 5% of the total length (measured on plan) of the No				0		30-Jan-16	MS 3.3.11 Completion of excavation, support and permanent lining for 5% of the total length (measured on plan) of the No							
MS 3.3.12 Completion of excavation, support and permanent lining for 6% of the total length (measured on plan) of the No				0		30-Jan-16	MS 3.3.12 Completion of excavation, support and permanent lining for 6% of the total length (measured on plan) of the No							
MS 3.3.13 Completion of excavation, support and permanent lining for 7% of the total length (measured on plan) of the No				0		30-Jan-16	MS 3.3.13 Completion of excavation, support and permanent lining for 7% of the total length (measured on plan) of the No							
MS 3.3.14 Completion of excavation, support and permanent lining for 8% of the total length (measured on plan) of the No				0		29-Feb-16	◆ MS 3.3.14 Completion of excavation, support and permanent lining for 8% of the total length (measured on plan) of the No							
MS 3.3.15 Completion of excavation, support and permanent lining for 9% of the total length (measured on plan) of the No				0		29-Feb-16	◆ MS 3.3.15 Completion of excavation, support and permanent lining for 9% of the total length (measured on plan) of the No							
MS 3.3.16 Completion of excavation, support and permanent lining for 10% of the total length (measured on plan) of the N				0		29-Feb-16	◆ MS 3.3.16 Completion of excavation, support and permanent lining for 10% of the total length (measured on plan) of the N							
MS 3.3.17 Completion of excavation, support and permanent lining for 11% of the total length (measured on plan) of the N				0		29-Feb-16	◆ MS 3.3.17 Completion of excavation, support and permanent lining for 11% of the total length (measured on plan) of the N							
MS 3.3.18 Completion of excavation, support and permanent lining for 12% of the total length (measured on plan) of the N				0		31-Mar-16	◆ MS 3.3.18 Completion of excavation, support and permanent lining for 12% of the total length (measured on plan) of the N							
MS 3.3.19 Completion of excavation, support and permanent lining for 13% of the total length (measured on plan) of the N				0		31-Mar-16	◆ MS 3.3.19 Completion of excavation, support and permanent lining for 13% of the total length (measured on plan) of the N							
MS 3.3.20 Completion of excavation, support and permanent lining for 14% of the total length (measured on plan) of the N				0		31-Mar-16	◆ MS 3.3.20 Completion of excavation, support and permanent lining for 14% of the total length (measured on plan) of the N							
MS 3.3.21 Completion of excavation, support and permanent lining for 15% of the total length (measured on plan) of the N				0		31-Mar-16	◆ MS 3.3.21 Completion of excavation, support and permanent lining for 15% of the total length (measured on plan) of the N							
MS 3.3.22 Completion of excavation, support and permanent lining for 16% of the total length (measured on plan) of the N				0		31-Mar-16	◆ MS 3.3.22 Completion of excavation, support and permanent lining for 16% of the total length (measured on plan) of the N							

Page 2 of 12	<div><div></div><div></div><div></div><div></div><div></div><div></div></div> <div><div>Planned Bar</div><div>Planned Bar - Critical</div><div>Planned Milestone</div><div>Progress bar</div><div>Progress Milestone</div></div>	TMCLK - Northern Connection Sub-Sea Tunnel Section  Detailed Works Programme (Rev. F)  Three Months Rolling Programme  Progress as of 01-May-16	<div><div><div><div></div><div></div><div></div></div><div><div>香港寶嘉</div><div>Dragages HongKong</div><div>A member of the Bouygues Construction group</div></div></div><div><div>Dragages - Bouygues Joint Venture</div><div>寶嘉 · 布依格聯營</div></div></div> <div><div></div><div></div></div>	<table><tr><th>Date</th><th>Revision</th><th>Checked</th><th>Approved</th></tr><tr><td>12-Feb-14</td><td>TMCLKDBJEN PRG.98507</td><td>WYu</td><td>SPa</td></tr><tr><td>08-Apr-14</td><td>TMCLKDBJEN PRG.98507 Rev.B</td><td>SPa</td><td>WYu</td></tr><tr><td>28-Aug-14</td><td>TMCLKDBJEN PRG.98507 Rev.C</td><td>CLa</td><td>WYu</td></tr><tr><td>10-Jun-15</td><td>TMCLKDBJEN PRG.98507 Rev.F</td><td>WYu</td><td></td></tr></table>	Date	Revision	Checked	Approved	12-Feb-14	TMCLKDBJEN PRG.98507	WYu	SPa	08-Apr-14	TMCLKDBJEN PRG.98507 Rev.B	SPa	WYu	28-Aug-14	TMCLKDBJEN PRG.98507 Rev.C	CLa	WYu	10-Jun-15	TMCLKDBJEN PRG.98507 Rev.F	WYu	
Date	Revision	Checked	Approved																					
12-Feb-14	TMCLKDBJEN PRG.98507	WYu	SPa																					
08-Apr-14	TMCLKDBJEN PRG.98507 Rev.B	SPa	WYu																					
28-Aug-14	TMCLKDBJEN PRG.98507 Rev.C	CLa	WYu																					
10-Jun-15	TMCLKDBJEN PRG.98507 Rev.F	WYu																						

Activity Name				Orig Dur	DWPF Start	DWPF Finish	2016								
							Feb	Mar	Apr	May	Jun	Jul	Aug	Sep	
MS 4.1.6 Complete 60% of total length (measured on plan) of temporary retaining walls for excavation of Cut-and-cover tu				0		31-Dec-15	plete 60% of total length (measured on plan) of temporary retaining walls for excavation of Cut-and-cover tu								
MS 4.1.7 Complete 70% of total length (measured on plan) of temporary retaining walls for excavation of Cut-and-cover tu				0		30-Jan-16	MS 4.1.7 Complete 70% of total length (measured on plan) of temporary retaining walls for excavation of Cut-and-cover tu								
MS 4.1.8 Complete 80% of total length (measured on plan) of temporary retaining walls for excavation of Cut-and-cover tu				0		30-Jan-16	MS 4.1.8 Complete 80% of total length (measured on plan) of temporary retaining walls for excavation of Cut-and-cover tu								
MS 4.1.9 Complete 90% of total length (measured on plan) of temporary retaining walls for excavation of Cut-and-cover tu				0		29-Feb-16	◆ MS 4.1.9 Complete 90% of total length (measured on plan) of temporary retaining walls for excavation of Cut-and-cover tu								
MS 4.1.10 Complete 100% of total length (measured on plan) of temporary retaining walls for excavation of Cut-and-cover				0		31-Mar-16	◆ MS 4.1.10 Complete 100% of total length (measured on plan) of temporary retaining walls for excavation of Cut-and-cover								
MS 4.1.11 Complete 20% of excavation for Cut-and-cover tunnel				0		30-Jun-16	◆ MS 4.1.11 Complete 20% of excavation for Cut-and-cover tunnel								
MS 4.1.16 Complete permanent tunnel structure for 10% of the total length (measured on plan) of Cut-and-cover Tunnel				0		30-Jul-16	◆ MS 4.1.16 Complete permanent tunnel structure for 10% of the total length (measured on plan) of Cut-and-cover Tunnel								
MS 4.1.26 Complete excavation for 50% of total length (measured on plan) of all Cross Passages				0		31-Dec-15	complete excavation for 50% of total length (measured on plan) of all Cross Passages								
MS 4.1.27 Complete excavation for 100% of total length (measured on plan) of all Cross Passages				0		31-Mar-16	◆ MS 4.1.27 Complete excavation for 100% of total length (measured on plan) of all Cross Passages								
Cut-and-cover Tunnel at Northern Landfall															
MS 4.2.26 Complete 25% of permanent lining and internal structures for all Northern Landfall Cross Passages				0		30-Jul-16	◆ MS 4.2.26 Complete 25% of permanent lining and internal structures for all Northern Landfall Cross Passages								
MS 4.2.34 Complete Permanent junction structure at interface between Cut-and-cover and TBM Tunnel				0		30-Jul-16	◆ MS 4.2.34 Complete Permanent junction structure at interface between Cut-and-cover and TBM Tunnel								
Approach Ramp Structures to Cut-and-cover Tunnel at Southern Landfall															
MS 5.1.1 Complete 20% of excavation for approach ramp structures				0		31-Mar-16	◆ MS 5.1.1 Complete 20% of excavation for approach ramp structures								
MS 5.1.2 Complete 40% of excavation for approach ramp structures				0		31-Mar-16	◆ MS 5.1.2 Complete 40% of excavation for approach ramp structures								
MS 5.1.3 Complete 60% of excavation for approach ramp structures				0		31-Mar-16	◆ MS 5.1.3 Complete 60% of excavation for approach ramp structures								
MS 5.1.4 Complete 80% of excavation for approach ramp structures				0		30-Apr-16	◆ MS 5.1.4 Complete 80% of excavation for approach ramp structures								
MS 5.1.5 Complete 100% of excavation for approach ramp structures				0		30-Apr-16	◆ MS 5.1.5 Complete 100% of excavation for approach ramp structures								
MS 5.1.6 Complete retaining wall foundation for 10% of the total length (measured on plan) of approach ramp structure				0		31-Oct-15	for 10% of the total length (measured on plan) of approach ramp structure								
MS 5.1.7 Complete retaining wall foundation for 20% of the total length (measured on plan) of approach ramp structure				0		30-Nov-15	wall foundation for 20% of the total length (measured on plan) of approach ramp structure								
MS 5.1.8 Complete retaining wall foundation for 30% of the total length (measured on plan) of approach ramp structure				0		30-Nov-15	wall foundation for 30% of the total length (measured on plan) of approach ramp structure								
MS 5.1.9 Complete retaining wall foundation for 40% of the total length (measured on plan) of approach ramp structure				0		31-Dec-15	plete retaining wall foundation for 40% of the total length (measured on plan) of approach ramp structure								
MS 5.1.10 Complete retaining wall foundation for 50% of the total length (measured on plan) of approach ramp structure				0		31-Dec-15	complete retaining wall foundation for 50% of the total length (measured on plan) of approach ramp structure								
MS 5.1.11 Complete retaining wall foundation for 60% of the total length (measured on plan) of approach ramp structure				0		30-Jan-16	MS 5.1.11 Complete retaining wall foundation for 60% of the total length (measured on plan) of approach ramp structure								
MS 5.1.12 Complete retaining wall foundation for 70% of the total length (measured on plan) of approach ramp structure				0		30-Jan-16	MS 5.1.12 Complete retaining wall foundation for 70% of the total length (measured on plan) of approach ramp structure								
MS 5.1.13 Complete retaining wall foundation for 80% of the total length (measured on plan) of approach ramp structure				0		29-Feb-16	◆ MS 5.1.13 Complete retaining wall foundation for 80% of the total length (measured on plan) of approach ramp structure								
MS 5.1.14 Complete retaining wall foundation for 90% of the total length (measured on plan) of approach ramp structure				0		29-Feb-16	◆ MS 5.1.14 Complete retaining wall foundation for 90% of the total length (measured on plan) of approach ramp structure								
MS 5.1.15 Complete retaining wall foundation for 100% of the total length (measured on plan) of approach ramp structure				0		31-Mar-16	◆ MS 5.1.15 Complete retaining wall foundation for 100% of the total length (measured on plan) of approach ramp structure								
South Ventilation Buildings															
MS 7.1.3 Complete 100% of foundation for the ventilation building				0		30-Apr-16	◆ MS 7.1.3 Complete 100% of foundation for the ventilation building								
North Ventilation Buildings															
MS 7.2.1 Complete 100% of cofferdam for excavation				0		31-May-16	◆ MS 7.2.1 Complete 100% of cofferdam for excavation								
MS 7.2.2 Complete 100% of excavation to the formation level				0		31-May-16	◆ MS 7.2.2 Complete 100% of excavation to the formation level								
MS 7.2.4 Complete concreting works of 25% area of the total construction floor area for the ventilation building				0		30-Jul-16	◆ MS 7.2.4 Complete concreting works of 25% area of the total construction floor area for the ventilation building								
Construction															
Northern Landfall															
North Reclamation (Phase 1)															
Construction															
Zone B															
Reclamation															
Surcharge Removal - Zone B - (CH598 to 698) stage 1				10	28-Jul-16	08-Aug-16	Surcharge Removal - Zone B - (CH598 to 698) stage 1								
Box Culvert Extension															
Construction															
Ch000-010 Culvert Outfall															
Installation of temporary bulk head				26	10-Aug-15	08-Sep-15									
CH000-150 Land Section															
ELS & Structure															
Pile A43/A41 CJ to Pile A41/A39 CJ															
Box Culvert Structure															
Pile cap construction				10	27-May-15	06-Jun-15									
Base slab construction including kicker				6	19-Jun-15	26-Jun-15									
Removal of strut S1				4	27-Jun-15	02-Jul-15									
System formworks delivery & setup				14	03-Jul-15	18-Jul-15									
Walls & top slab construction				6	20-Jul-15	25-Jul-15									
Removal of strut S2 & Backfilling up to required level				6	03-Aug-15	08-Aug-15									
Pile A45/A43 CJ to Pile A43/A41 CJ															
Box Culvert Structure															
Pile cap construction				10	08-Jun-15	18-Jun-15									
Base slab construction including kicker				6	27-Jun-15	04-Jul-15									
Removal of strut S1				4	06-Jul-15	09-Jul-15									
Walls & top slab construction				6	27-Jul-15	01-Aug-15									
Removal of strut S2 & Backfilling up to required level				6	10-Aug-15	15-Aug-15									
Pile A47/A45 CJ to Pile A45/A43 CJ															
ELS															
Excavation to FEL				5	27-May-15	01-Jun-15									

Page 3 of 12

Project ID: TMCLK DWPF 15W48

Data Date: 01-May-16

Planned Bar

Planned Bar - Critical

Planned Milestone

Progress bar

Progress Milestone

TMCLK - Northern Connection Sub-Sea Tunnel Section

Detailed Works Programme (Rev. F)

Three Months Rolling Programme

Progress as of 01-May-16

香港寶嘉

Dragages HongKong

A member of the Bouygues Construction group

Dragages - Bouygues Joint Venture 寶嘉 - 布依格聯營

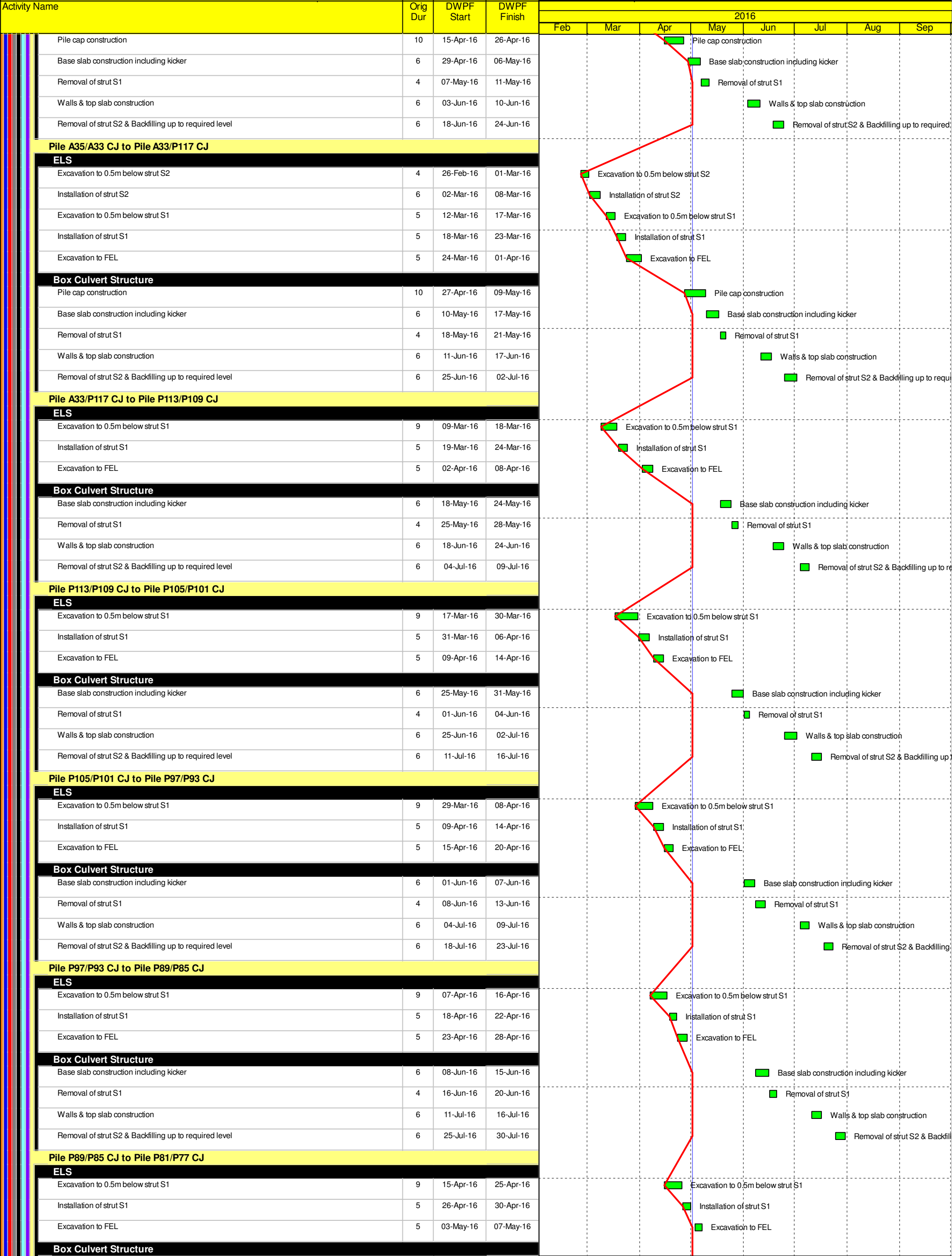
BOUYGUES

TRAVAUX PUBLICS

Date	Revision	Checked	Approved
12-Feb-14	TMCLKDBJGEN/PRG/98507	WYu	SPa
08-Apr-14	TMCLKDBJGEN/PRG/98507 Rev.B	SPa	WYu
28-Aug-14	TMCLKDBJGEN/PRG/98507 Rev.C	CLa	WYu
10-Jun-15	TMCLKDBJGEN/PRG/98507 Rev.F	WYu	



Activity Name				Orig Dur	DWPF Start	DWPF Finish	2016							
							Feb	Mar	Apr	May	Jun	Jul	Aug	Sep
Box Culvert Structure														
Pile cap construction				10	19-Jun-15	02-Jul-15								
Base slab construction including kicker				6	06-Jul-15	11-Jul-15								
Removal of strut S1				4	13-Jul-15	16-Jul-15								
Walls & top slab construction				6	03-Aug-15	08-Aug-15								
Removal of strut S2 & Backfilling up to required level				6	17-Aug-15	22-Aug-15								
Pile A49/A47 CJ to Pile A47/A45 CJ														
ELS														
Excavation to FEL				5	02-Jun-15	06-Jun-15								
Box Culvert Structure														
Pile cap construction				10	03-Jul-15	14-Jul-15								
Base slab construction including kicker				6	15-Jul-15	21-Jul-15								
Removal of strut S1				4	22-Jul-15	25-Jul-15								
Walls & top slab construction				6	10-Aug-15	15-Aug-15								
Pile A52/A49 CJ to Pile A49/A47 CJ														
ELS														
Excavation to FEL				5	08-Jun-15	12-Jun-15								
Box Culvert Structure														
Pile cap construction				10	22-Jul-15	01-Aug-15								
Base slab construction including kicker				6	03-Aug-15	08-Aug-15								
Removal of strut S1				4	10-Aug-15	13-Aug-15								
Walls & top slab construction				6	17-Aug-15	22-Aug-15								
Ch150-250 Marine Section														
ELS & Structure														
Dewatering well installation Ch180-250				12	19-Jun-15	04-Jul-15								
Dewatering well installation Ch100-180				12	06-Jul-15	18-Jul-15								
1st Pumping test				18	20-Jul-15	08-Aug-15								
Toe grouting Ch100-250				95	07-Sep-15	31-Dec-15								
2nd Pumping test Ch100-250				29	02-Jan-16	04-Feb-16								
Pile A41/A39 CJ to Pile A39/A37 CJ														
ELS														
Excavation to 0.5m below strut S2				4	05-Feb-16	16-Feb-16								
Installation of strut S2				6	17-Feb-16	23-Feb-16								
Excavation to 0.5m below strut S1				5	24-Feb-16	29-Feb-16								
Installation of strut S1				5	01-Mar-16	05-Mar-16								
Excavation to FEL				5	07-Mar-16	11-Mar-16								
Box Culvert Structure														
Pile cap construction				10	18-Mar-16	01-Apr-16								
Base slab construction including kicker				6	15-Apr-16	21-Apr-16								
Removal of strut S1				4	22-Apr-16	26-Apr-16								
Sliding formworks 1st assembly				18	27-Apr-16	19-May-16								
Walls & top slab construction				6	20-May-16	26-May-16								
Removal of strut S2 & Backfilling up to required level				6	03-Jun-16	10-Jun-16								
Pile A39/A37 CJ to Pile A37/A35 CJ														
ELS														
Excavation to 0.5m below strut S2				4	17-Feb-16	20-Feb-16								
Installation of strut S2				6	22-Feb-16	27-Feb-16								
Excavation to 0.5m below strut S1				5	01-Mar-16	05-Mar-16								
Installation of strut S1				5	07-Mar-16	11-Mar-16								
Excavation to FEL				5	12-Mar-16	17-Mar-16								
Box Culvert Structure														
Pile cap construction				10	02-Apr-16	14-Apr-16								
Base slab construction including kicker				6	22-Apr-16	28-Apr-16								
Removal of strut S1				4	29-Apr-16	04-May-16								
Walls & top slab construction				6	27-May-16	02-Jun-16								
Removal of strut S2 & Backfilling up to required level				6	11-Jun-16	17-Jun-16								
Pile A37/A35 CJ to Pile A35/A33 CJ														
ELS														
Excavation to 0.5m below strut S2				4	22-Feb-16	25-Feb-16								
Installation of strut S2				6	26-Feb-16	03-Mar-16								
Excavation to 0.5m below strut S1				5	07-Mar-16	11-Mar-16								
Installation of strut S1				5	12-Mar-16	17-Mar-16								
Excavation to FEL				5	18-Mar-16	23-Mar-16								
Box Culvert Structure														





Activity Name				Orig Dur	DWPF Start	DWPF Finish	2016							
							Feb	Mar	Apr	May	Jun	Jul	Aug	Sep
CP55 - Traditional Method														
CP Setup	6	21-Mar-16	31-Mar-16						CP Setup					
1st Segment Opening	7	31-Mar-16	09-Apr-16						1st Segment Opening					
CP Excavation	14	09-Apr-16	26-Apr-16						CP Excavation					
CP Lining	14	26-Apr-16	13-May-16						CP Lining					
2nd Segment Opening	7	13-May-16	23-May-16						2nd Segment Opening					
CP Finishing & Demobilization	18	23-May-16	14-Jun-16							CP Finishing & Demobilization				
CP54 - Traditional Method														
CP Setup	6	14-Jun-16	21-Jun-16							CP Setup				
1st Segment Opening	7	21-Jun-16	29-Jun-16							1st Segment Opening				
CP Excavation	14	29-Jun-16	16-Jul-16							CP Excavation				
CP Lining	14	16-Jul-16	02-Aug-16							CP Lining				
2nd Segment Opening	7	02-Aug-16	10-Aug-16							2nd Segment Opening				
CP53 - Pipe Jacking Method														
CP - Pipe Jacking TBM - Delivery, Assembly & Setup	23	05-Jan-16	01-Feb-16						CP - Pipe Jacking TBM - Delivery, Assembly & Setup					
CP - Pipe Jacking Method - Break-in, Excavation & Lining Installation	9	01-Feb-16	10-Feb-16						CP - Pipe Jacking Method - Break-in, Excavation & Lining Installation					
CP - Pipe Jacking Method - Break out & Pipe Jacking TBM Removal	10	10-Feb-16	20-Feb-16						CP - Pipe Jacking Method - Break out & Pipe Jacking TBM Removal					
CP - Waterproofing, Finishing	21	20-Feb-16	16-Mar-16						CP - Waterproofing, Finishing					
CP52 - Pipe Jacking Method														
CP52 Platform Available from ML03 North Approach Tunnel Backfilling	0	30-Jan-16							CP52 Platform Available from ML03 North Approach Tunnel Backfilling					
CP52 Platform Available from ML02 North Approach Tunnel Backfilling	0	12-Jan-16							CP52 Platform Available from ML02 North Approach Tunnel Backfilling					
CP - Pipe Jacking TBM - Delivery, Assembly & Setup	23	01-Feb-16	05-Mar-16						CP - Pipe Jacking TBM - Delivery, Assembly & Setup					
CP - Pipe Jacking Method - Break-in, Excavation & Lining Installation	9	05-Mar-16	14-Mar-16						CP - Pipe Jacking Method - Break-in, Excavation & Lining Installation					
CP - Pipe Jacking Method - Break out & Pipe Jacking TBM Removal	10	14-Mar-16	24-Mar-16						CP - Pipe Jacking Method - Break out & Pipe Jacking TBM Removal					
CP Finishing & Demobilization	21	24-Mar-16	22-Apr-16						CP Finishing & Demobilization					
CP51 - Traditional Method														
CP51 Platform Available from ML03 North Approach Tunnel Backfilling	0	31-Mar-16							CP51 Platform Available from ML03 North Approach Tunnel Backfilling					
CP51 Platform Available from ML02 North Approach Tunnel Backfilling	0	10-Mar-16							CP51 Platform Available from ML02 North Approach Tunnel Backfilling					
CP Excavation	14	14-Sep-16	28-Sep-16											
CP50 - Pipe Jacking Method														
CP50 Platform Available from ML03 North Approach Tunnel Backfilling	0	16-May-16								CP50 Platform Available from ML03 North Approach Tunnel Backfilling				
CP50 Platform Available from ML02 North Approach Tunnel Backfilling	0	09-Apr-16							CP50 Platform Available from ML02 North Approach Tunnel Backfilling					
CP Setup	23	16-May-16	11-Jun-16							CP Setup				
CP - Pipe Jacking Method - Break-in, Excavation & Lining Installation	9	12-Jun-16	21-Jun-16							CP - Pipe Jacking Method - Break-in, Excavation & Lining Installation				
CP - Pipe Jacking Method - Break out & Pipe Jacking TBM Removal	10	22-Jun-16	01-Jul-16							CP - Pipe Jacking Method - Break out & Pipe Jacking TBM Removal				
CP Finishing & Demobilization	21	02-Jul-16	26-Jul-16							CP Finishing & Demobilization				
North Ventilation Building														
Design Submission														
(A11) Submissons to Design Advisory Panel of ArchSD														
ArchSD's comment	30	10-Jun-14	09-Jul-14											
(I1) DDA for North Vent.Bldgs. GBP & Arch.Submission														
IPs Review	28	21-Aug-14	17-Sep-14											
IP's No Objection Received	0		17-Sep-14											
SO's Review	35	21-Aug-14	24-Sep-14											
SO Approval with Condition Received	0		24-Sep-14											
(I1) DDA for North & South Vent.Bldg. ABWF works														
Preparation of DDANorth & South ABWF	18	25-Sep-14	17-Oct-14											
Review & Comment by JV	24	18-Oct-14	14-Nov-14											
Designer prepare DDA	15	15-Nov-14	02-Dec-14											
Formal Submission of DDA to ICE/ IPs	0		02-Dec-14											
Advanced Submission to SO	0		02-Dec-14											
IPs/ SO's Advance Comments/ ICE Comments	28	03-Dec-14	30-Dec-14											
Comments Received	0		30-Dec-14											
Designer to Reply RiC + Update Submission	21	31-Dec-14	24-Jan-15											
(I2) DDA for North Vent.Bldgs.Structural Design incl.Vent.Connections														
ICE Approval & Issue Check Cert	12	24-Dec-14	09-Jan-15											
Submit ICE Check Cert to SO	6	10-Jan-15	16-Jan-15											
IPs Review	28	24-Dec-14	20-Jan-15											
IP's No Objection Received	0		20-Jan-15											
SO's Review	35	24-Dec-14	27-Jan-15											
SO Approval with Condition Received	0		27-Jan-15											
(I3) DDA for North & South Vent.Bldgs. Service and E&M Provision														







Activity Name				Orig Dur	DWPF Start	DWPF Finish	2016								
							Feb	Mar	Apr	May	Jun	Jul	Aug	Sep	
SB - Sub-sea TBM Tunnel - CDG+Boulder with Saturation (Ch6321 to 6281 - 40m)				5	29-Feb-16	05-Mar-16		<div></div>	SB - Sub-sea TBM Tunnel - CDG+Boulder with Saturation (Ch6321 to 6281 - 40m)						
SB - Sub-sea TBM Tunnel - Steel Bell dismantling & Reconnect for NVS supply				27	05-Mar-16	04-Apr-16		<div></div>	SB - Sub-sea TBM Tunnel - Steel Bell dismantling & Reconnect for NVS supply						
SB - Sub-sea TBM Tunnel - CDG with Saturation (Ch6281 to 6261 - 20m)				2	04-Apr-16	06-Apr-16			<div></div>	SB - Sub-sea TBM Tunnel - CDG with Saturation (Ch6281 to 6261 - 20m)					
SB - Sub-sea TBM Tunnel - Transition with Saturation (Ch6261 to 6196 - 65m)				11	06-Apr-16	17-Apr-16			<div></div>	SB - Sub-sea TBM Tunnel - Transition with Saturation (Ch6261 to 6196 - 65m)					
SB - Sub-sea TBM Tunnel - CDG+Boulder with Saturation (Ch6196 to 6156 - 40m)				5	17-Apr-16	22-Apr-16			<div></div>	SB - Sub-sea TBM Tunnel - CDG+Boulder with Saturation (Ch6196 to 6156 - 40m)					
SB - Sub-sea TBM Tunnel - CDG with Saturation (Ch6156 to 6121 - 35m)				3	22-Apr-16	25-Apr-16			<div></div>	SB - Sub-sea TBM Tunnel - CDG with Saturation (Ch6156 to 6121 - 35m)					
SB - Sub-sea TBM Tunnel - Transition with Saturation (Ch6121 to 6071 - 50m)				9	25-Apr-16	04-May-16			<div></div>	SB - Sub-sea TBM Tunnel - Transition with Saturation (Ch6121 to 6071 - 50m)					
SB - Sub-sea TBM Tunnel - CDG+Boulder with Saturation (Ch6071 to 6031 - 40m)				5	04-May-16	09-May-16			<div></div>	SB - Sub-sea TBM Tunnel - CDG+Boulder with Saturation (Ch6071 to 6031 - 40m)					
SB - Sub-sea TBM Tunnel - CDG with Saturation (Ch6031 to 5851 - 180m)				14	09-May-16	24-May-16			<div></div>	SB - Sub-sea TBM Tunnel - CDG with Saturation (Ch6031 to 5851 - 180m)					
SB - Sub-sea TBM Tunnel - CDG+Boulder with Saturation (Ch5851 to 5831 - 20m)				2	24-May-16	26-May-16			<div></div>	SB - Sub-sea TBM Tunnel - CDG+Boulder with Saturation (Ch5851 to 5831 - 20m)					
SB - Sub-sea TBM Tunnel - Transition with Saturation (Ch5831 to 5761 - 70m)				12	26-May-16	07-Jun-16			<div></div>	SB - Sub-sea TBM Tunnel - Transition with Saturation (Ch5831 to 5761 - 70m)					
SB - Sub-sea TBM Tunnel - CDG+Boulder with Saturation (Ch5761 to 5571 - 190m)				22	07-Jun-16	30-Jun-16			<div></div>	SB - Sub-sea TBM Tunnel - CDG+Boulder with Saturation (Ch5761 to 5571 - 190m)					
SB - Sub-sea TBM Tunnel - CDG with Saturation (Ch5571 to 5351 - 220m)				18	30-Jun-16	19-Jul-16			<div></div>	SB - Sub-sea TBM Tunnel - CDG with Saturation (Ch5571 to 5351 - 220m)					
SB - Sub-sea TBM Tunnel - CDG with Saturation (Ch5351 to 4971 - 380m)				30	19-Jul-16	19-Aug-16			<div></div>	SB - Sub-sea TBM Tunnel - CDG with Saturation (Ch5351 to 4971 - 380m)					
Sub-sea TBM Tunnel - NB - Precast Invert Gallery															
NB - Sub-sea TBM Tunnel - Precast Invert Gallery - Completion to CP48				16	26-May-16	11-Jun-16				<div></div>	NB - Sub-sea TBM Tunnel - Precast Invert Gallery - Completion to CP48				
NB - Sub-sea TBM Tunnel - Precast Invert Gallery - Completion to CP47				12	11-Jun-16	24-Jun-16				<div></div>	NB - Sub-sea TBM Tunnel - Precast Invert Gallery - Completion to CP47				
NB - Sub-sea TBM Tunnel - Precast Invert Gallery - Completion to CP46				9	24-Jun-16	03-Jul-16				<div></div>	NB - Sub-sea TBM Tunnel - Precast Invert Gallery - Completion to CP46				
NB - Sub-sea TBM Tunnel - Precast Invert Gallery - Completion to CP45				10	03-Jul-16	13-Jul-16				<div></div>	NB - Sub-sea TBM Tunnel - Precast Invert Gallery - Completion to CP45				
NB - Sub-sea TBM Tunnel - Precast Invert Gallery - Completion to CP44				14	13-Jul-16	28-Jul-16				<div></div>	NB - Sub-sea TBM Tunnel - Precast Invert Gallery - Completion to CP44				
NB - Sub-sea TBM Tunnel - Precast Invert Gallery - Completion to CP43				11	28-Jul-16	08-Aug-16				<div></div>	NB - Sub-sea TBM Tunnel - Precast Invert Gallery - Completion to CP43				
Sub-sea TBM Tunnel - SB - Precast Invert Gallery															
SB - ISIG Assembly for Sub-sea TBM Tunnel				7	15-Jan-16	22-Jan-16	SB - ISIG Assembly for Sub-sea TBM Tunnel								
SB - Sub-sea TBM Tunnel - Precast Invert Gallery - Completion to CP48				14	04-Apr-16	18-Apr-16		<div></div>	SB - Sub-sea TBM Tunnel - Precast Invert Gallery - Completion to CP48						
SB - Sub-sea TBM Tunnel - Precast Invert Gallery - Completion to CP47				11	18-Apr-16	29-Apr-16		<div></div>	SB - Sub-sea TBM Tunnel - Precast Invert Gallery - Completion to CP47						
SB - Sub-sea TBM Tunnel - Precast Invert Gallery - Completion to CP46				11	29-Apr-16	10-May-16			<div></div>	SB - Sub-sea TBM Tunnel - Precast Invert Gallery - Completion to CP46					
SB - Sub-sea TBM Tunnel - Precast Invert Gallery - Completion to CP45				8	10-May-16	19-May-16			<div></div>	SB - Sub-sea TBM Tunnel - Precast Invert Gallery - Completion to CP45					
SB - Sub-sea TBM Tunnel - Precast Invert Gallery - Completion to CP44				8	19-May-16	27-May-16			<div></div>	SB - Sub-sea TBM Tunnel - Precast Invert Gallery - Completion to CP44					
SB - Sub-sea TBM Tunnel - Precast Invert Gallery - Completion to CP43				15	27-May-16	11-Jun-16			<div></div>	SB - Sub-sea TBM Tunnel - Precast Invert Gallery - Completion to CP43					
SB - Sub-sea TBM Tunnel - Precast Invert Gallery - Completion to CP42				13	11-Jun-16	25-Jun-16			<div></div>	SB - Sub-sea TBM Tunnel - Precast Invert Gallery - Completion to CP42					
SB - Sub-sea TBM Tunnel - Precast Invert Gallery - Completion to CP41				10	25-Jun-16	05-Jul-16			<div></div>	SB - Sub-sea TBM Tunnel - Precast Invert Gallery - Completion to CP41					
SB - Sub-sea TBM Tunnel - Precast Invert Gallery - Completion to CP40				8	05-Jul-16	13-Jul-16			<div></div>	SB - Sub-sea TBM Tunnel - Precast Invert Gallery - Completion to CP40					
SB - Sub-sea TBM Tunnel - Precast Invert Gallery - Completion to CP39				9	13-Jul-16	23-Jul-16			<div></div>	SB - Sub-sea TBM Tunnel - Precast Invert Gallery - Completion to CP39					
SB - Sub-sea TBM Tunnel - Precast Invert Gallery - Completion to CP38				7	23-Jul-16	30-Jul-16			<div></div>	SB - Sub-sea TBM Tunnel - Precast Invert Gallery - Completion to CP38					
SB - Sub-sea TBM Tunnel - Precast Invert Gallery - Completion to CP37				8	30-Jul-16	07-Aug-16			<div></div>	SB - Sub-sea TBM Tunnel - Precast Invert Gallery - Completion to CP37					
Sub-sea Tunnel Cross Passage & Internal Structure															
Design Submission															
(G4) DDA for Cross Passage - Permanent works - incl. Geotechnical Assessment - Sub-sea tunnel															
Designer prepare DDA				12	08-Dec-14	20-Dec-14									
Formal Submission of DDA to ICE/ IPs				0		20-Dec-14									
Advanced Submission to SO				0		20-Dec-14									
IPs/ SO's Advance Comments/ ICE Comments				28	21-Dec-14	17-Jan-15									
Comments Received				0		17-Jan-15									
Designer to Reply RiC + Update Submission				21	19-Jan-15	11-Feb-15									
Submit Updated DDA to SO/ ICE/ IPs				0	12-Feb-15										
ICE Approval & Issue Check Cert				12	12-Feb-15	04-Mar-15									
Submit ICE Check Cert to SO				6	05-Mar-15	11-Mar-15									
IPs Review				28	12-Feb-15	11-Mar-15									
IP's No Objection Received				0		11-Mar-15									
SO's Review				35	12-Feb-15	18-Mar-15									
SO Approval with Condition Received				0		18-Mar-15									
Construction															
Sub-sea Tunnel Cross Passage															
CP48 - ML03 - Ch6489															
CP - Pipe Jacking Method - Setup & Assembly				23	20-Jun-16	18-Jul-16					<div></div>	CP - Pipe Jacking Method - Setup & Assembly			
CP - Piping Jacking Method - Break-in & Excavation				10	18-Jul-16	28-Jul-16					<div></div>	CP - Piping Jacking Method - Break-in & Excavation			
CP - Pipe Jacking Method - Break-out & Demobilization				11	28-Jul-16	08-Aug-16					<div></div>	CP - Pipe Jacking Method - Break-out & Demobilization			
CP47 - ML03 - Ch6390															
CP - Pipe Jacking Method - Setup & Assembly				23	24-Jun-16	22-Jul-16					<div></div>	CP - Pipe Jacking Method - Setup & Assembly			
CP - Piping Jacking Method - Break-in & Excavation				10	22-Jul-16	01-Aug-16					<div></div>	CP - Piping Jacking Method - Break-in & Excavation			
CP46 - ML03 - Ch6292															

Activity Name				Orig Dur	DWPF Start	DWPF Finish	2016							
							Feb	Mar	Apr	May	Jun	Jul	Aug	Sep
CP - Pipe Jacking Method - Setup & Assembly				23	12-Jul-16	08-Aug-16								
CP45 - ML03 - Ch6193														
CP - Pipe Jacking Method - Setup & Assembly				23	18-Jul-16	13-Aug-16								
Southern Landfall														
South Cut & Cover Tunnel														
Design Submission														
(E2) DDA for South C&C Box & Approach Ramp														
Review & Comment by JV				18	09-Dec-14	31-Dec-14								
Designer prepare DDA				10	02-Jan-15	13-Jan-15								
Formal Submission of DDA to ICE/ IPs				0		13-Jan-15								
Advanced Submission to SO				0		13-Jan-15								
IPs/ SO'sAdvance Comments/ ICE Comments				28	14-Jan-15	10-Feb-15								
Comments Received				0		10-Feb-15								
Designer to Reply RiC + Update Submission				21	11-Feb-15	13-Mar-15								
Submit Updated DDA to SO/ ICE/ IPs				0	14-Mar-15									
ICE Approval & Issue Check Cert				18	14-Mar-15	08-Apr-15								
IPs Review				28	14-Mar-15	10-Apr-15								
SO's Review				35	14-Mar-15	17-Apr-15								
Method Statement Submission														
Method Statement of Construction Methodology of C&C Tunnels														
Preparation Method Statement for C&C Tunnels				25	28-Mar-15	30-Apr-15								
Submit Method Statement to SO				0		30-Apr-15								
SO Reviews & Comments				28	01-May-15	28-May-15								
Re-submission				18	29-May-15	18-Jun-15								
SO's Review				28	19-Jun-15	16-Jul-15								
Construction														
South C&C Tunnel - Diaphragm Wall				120	03-Oct-15	02-Mar-16								
C&C Tunnel - 1st 85m - Excavation by ramp				23	03-Mar-16	01-Apr-16								
C&C Tunnel - 1st 85m - Excavation by vertical mean				11	02-Apr-16	15-Apr-16								
C&C Tunnel - 1st 85m - Tunnel Structure				95	16-Apr-16	09-Aug-16								
C&C Tunnel - 2nd 85m - Excavation by ramp				17	30-Apr-16	21-May-16								
C&C Tunnel - 2nd 85m - Excavation by vertical mean				18	23-May-16	13-Jun-16								
C&C Tunnel - 2nd 85m - Tunnel Structure				83	14-Jun-16	20-Sep-16								
C&C Tunnel - 3rd 85m - Excavation by ramp				18	23-May-16	13-Jun-16								
C&C Tunnel - 3rd 85m - Excavation by vertical mean				25	14-Jun-16	13-Jul-16								
C&C Tunnel - 3rd 85m - Tunnel Structure				83	26-Jul-16	02-Nov-16								
C&C Tunnel - 4th 85m - Excavation by ramp				21	30-Jun-16	25-Jul-16								
C&C Tunnel - 4th 85m - Excavation by vertical mean				35	26-Jul-16	03-Sep-16								
C&C Tunnel - 5th 85m - Excavation by ramp				23	26-Jul-16	20-Aug-16								
South Retrieval Shaft														
Design Submission														
(F4) Gantry Crane Support/Foundations in Southern Landfall														
Preparation of IFA Gantry Crane / Foundation				18	27-Jul-15	15-Aug-15								
Review & Comment by JV				18	17-Aug-15	05-Sep-15								
Designer prepare IFA				10	07-Sep-15	17-Sep-15								
Formal Submission of IFA to ICE/ IPs				0		17-Sep-15								
Advanced Submission to SO				0		17-Sep-15								
IPs/ SO'sAdvance Comments/ ICE Comments				28	18-Sep-15	15-Oct-15								
Method Statement Submission														
Method Statement of Construction Methodology of Retrieval Shaft														
Preparation Method Statement for Retrieval Shaft				25	24-Aug-15	21-Sep-15								
Submit Method Statement to SO				0		21-Sep-15								
SO Reviews & Comments				28	22-Sep-15	19-Oct-15								
Re-submission				18	20-Oct-15	10-Nov-15								
SO's Review				28	11-Nov-15	08-Dec-15								
Construction														
South Landfall GI Works/DW Setting Up				48	06-Aug-15	02-Oct-15								
South Retrieval Shaft - Diaphragm Wall				98	03-Oct-15	29-Jan-16								
Retrieval Shaft - Excavation - Soft by ramp				3	30-Jan-16	02-Feb-16								
Retrieval Shaft - Excavation - Soft by vertical mean (Fill material)				52	03-Feb-16	14-Apr-16								
Retrieval Shaft - Excavation - Soft (other than Fill)				140	15-Apr-16	30-Sep-16								
South Approach Ramp														
Construction														

Activity Name				Orig Dur	DWPF Start	DWPF Finish	2016							
							Feb	Mar	Apr	May	Jun	Jul	Aug	Sep
Approach Ramp (CH1580-1850) - Pipe Pile/Sheet Piles Wall				126	03-Oct-15	09-Mar-16	Approach Ramp (CH1580-1850) - Pipe Pile/Sheet Piles Wall							
Approach Ramp (CH1580-1850) - Tension Piles				103	03-Oct-15	04-Feb-16	Approach Ramp (CH1580-1850) - Tension Piles							
Approach Ramp (CH1580-1850) - Pile Test				24	05-Feb-16	10-Mar-16	Approach Ramp (CH1580-1850) - Pile Test							
South Ventilation Building														
Design Submission														
(I1) DDA for South Vent.Bldg. GBP & Arch.Submission														
ICE Approval & Issue Check Cert				18	22-Dec-14	14-Jan-15								
Submit ICE Check Cert to SO				6	15-Jan-15	21-Jan-15								
IPs Review				28	22-Dec-14	18-Jan-15								
IP's No Objection Received				0		18-Jan-15								
SO's Review				35	22-Dec-14	25-Jan-15								
SO Approval with Condition Received				0		26-Jan-15								
(I2) DDA for South Vent.Bldg. Foundation Design														
Review & Comment by JV				18	27-Apr-15	18-May-15								
Designer prepare DDA				10	19-May-15	30-May-15								
Formal Submission of DDA to ICE/ IPs				0		30-May-15								
Advanced Submission to SO				0		30-May-15								
IPs/ SO'sAdvance Comments/ ICE Comments				28	31-May-15	27-Jun-15								
Comments Received				0		27-Jun-15								
Designer to Reply RiC + Update Submission				21	29-Jun-15	23-Jul-15								
Submit Updated DDAto SO/ ICE/ IPs				0	24-Jul-15									
ICE Approval & Issue Check Cert				18	24-Jul-15	13-Aug-15								
IPs Review				28	24-Jul-15	20-Aug-15								
SO's Review				35	24-Jul-15	27-Aug-15								
(I2) DDA for South Vent.Bldg.Structural Design incl.Vent.Connections														
Review & Comment by JV				18	18-Feb-15	17-Mar-15								
Designer prepare DDA				10	18-Mar-15	28-Mar-15								
Formal Submission of DDA to ICE/ IPs				0		28-Mar-15								
Advanced Submission to SO				0		28-Mar-15								
IPs/ SO'sAdvance Comments/ ICE Comments				28	29-Mar-15	25-Apr-15								
Comments Received				0		25-Apr-15								
Designer to Reply RiC + Update Submission				21	27-Apr-15	21-May-15								
Submit Updated DDA to SO/ ICE/ IPs				0	22-May-15									
ICE Approval & Issue Check Cert				18	22-May-15	12-Jun-15								
IPs Review				28	22-May-15	18-Jun-15								
SO's Review				35	22-May-15	25-Jun-15								
(J1) DDA Temp.works for Construction of Sth.Vent.Bldg.														
Designer to Reply RiC + Update Submission				21	24-Aug-15	16-Sep-15								
Submit Updated DDA to SO/ ICE/ IPs				0	17-Sep-15									
ICE Approval & Issue Check Cert				12	17-Sep-15	02-Oct-15								
Submit ICE Check Cert to SO				6	03-Oct-15	09-Oct-15								
IPs Review				28	17-Sep-15	14-Oct-15								
IP's No Objection Received				0		14-Oct-15								
SO's Review				35	17-Sep-15	21-Oct-15								
SO Approval with Condition Received				0		22-Oct-15								
Construction														
Mobilization & Setting Up Piling Rigs				64	06-Aug-15	22-Oct-15								
S - Piling (Socket H-piles)				132	23-Oct-15	08-Apr-16	S - Piling (Socket H-piles)							
S - Pile Test				24	09-Apr-16	07-May-16	S - Pile Test							
S -Sheet Piling				48	23-Oct-15	17-Dec-15								
S- Excavation				100	09-May-16	05-Sep-16	S- Excavation							
South Surface Roadworks, Utility & Drainage works														
Design Submission														
(E1) AIP- Southern Landfall Seawall Modification														
SO Review (35 Days)				35	03-Mar-17	06-Apr-17								
SO Approval with Condition Received				0		06-Apr-17								
(E1) DDA - Southern Landfall Seawall Modification														
Preparation of DDA Modification of Seawall at Sth Landfall				18	07-Apr-17	02-May-17								
Review & Comment by JV				18	04-May-17	24-May-17								
Designer prepare DDA				10	25-May-17	06-Jun-17								
Formal Submission of DDA to ICE/ IPs				0		06-Jun-17								
Advanced Submission to SO				0		06-Jun-17								
TMCLK - Northern Connection Sub-Sea Tunnel Section														
Detailed Works Programme (Rev. F)														
Three Months Rolling Programme														
Progress as of 01-May-16														
Page 11 of 12														
Project ID: TMCLK DWPF 15W48														
Data Date: 01-May-16														



Activity Name				Orig Dur	DWPF Start	DWPF Finish	2016							
							Feb	Mar	Apr	May	Jun	Jul	Aug	Sep
IPs/ SO's Advance Comments/ ICE Comments														
Comments Received														
Designer to Reply RiC + Update Submission														
(E3) DDA for Sewerage, Drainage, Waterworks & Utility works for South Landfall														
Designer to Reply RiC + Update Submission														
Submit Updated DDA to SO/ ICE/ IPs														
ICE Approval & Issue Check Cert														
Submit ICE Check Cert to SO														
IPs Review														
IP's No Objection Received														
SO's Review														
SO Approval with Condition Received														
Method Statement Submission														
Method Statement of Ground Treatment for TBMs Passing under Southern Landfall Seawall														
Preparation Method Statement for Ground Improvement in South Landfall														
Submit Method Statement to SO														
SO Reviews & Comments														
Re-submission														
SO's Review														
SO's Approval														
Construction														
Temporary Platform for Ground Treatment for TBM passing under Southern Seawall														
Grouting Treatment for TBM passing under Southern Seawall														
Testing & Commissioning/Inspection & Handover														
Final Inspection & Handover														
Design Submission														
(A12) Maintenance Matrix														
Preparation of Maintenance Matrix														
1st Submission														
SO's Comments for 1st Submission														
Prepare Re-submission														
2nd Submission														
SO's Condition Approval														
(A13) Operation & Maintenance Manual														
Preparation of Operation and Maintenance Manual														
1st Submission														
SO's Comments for 1st Submission														
Prepare Re-submission														
2nd Submission														
SO's Condition Approval														
(A14) As-built & As-fabricated Drawings														
Preparation of As-built and As-fabricated Drawings														
1st Submission														
SO's Comments for 1st Submission														
Prepare Re-submission														
2nd Submission														
SO's Condition Approval														
(A15) Health & Safety File incl.As-built Dwgs & Records,Maintenance Schedules,O&M Manual														
Preparation of Health and Safety File including as-built drawings and records, maintenance schedules, operation and mai														
1st Submission														
SO's Comments for 1st Submission														
Prepare Re-submission														
2nd Submission														
SO's Condition Approval														