

Figure 1. Transect Line Layout in Northwest and Northeast Lantau Survey Areas

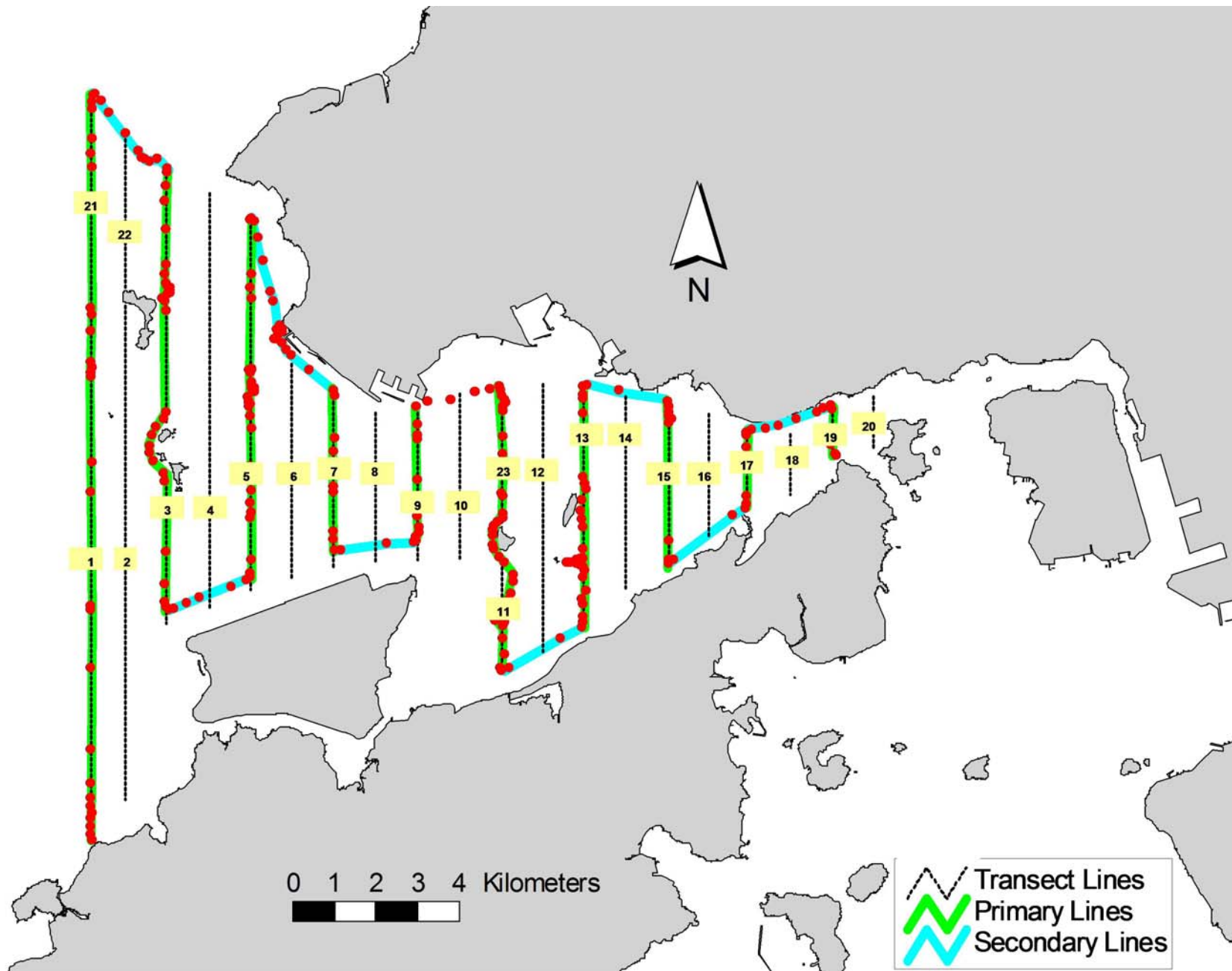


Figure 2. Survey Route on January 7th, 2014 (from HKLR03 project0)

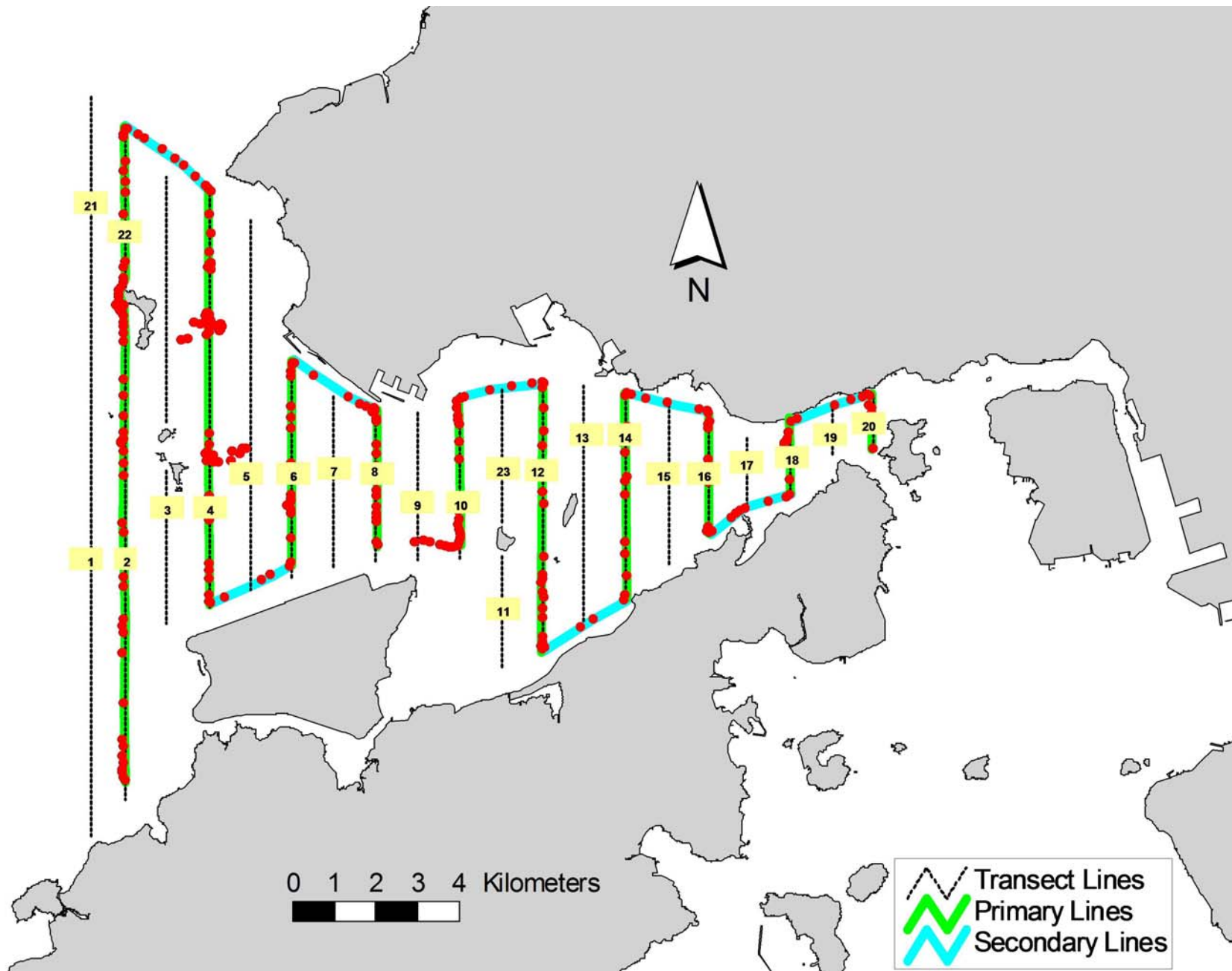


Figure 3. Survey Route on January 9th, 2014 (from HKLR03 project)

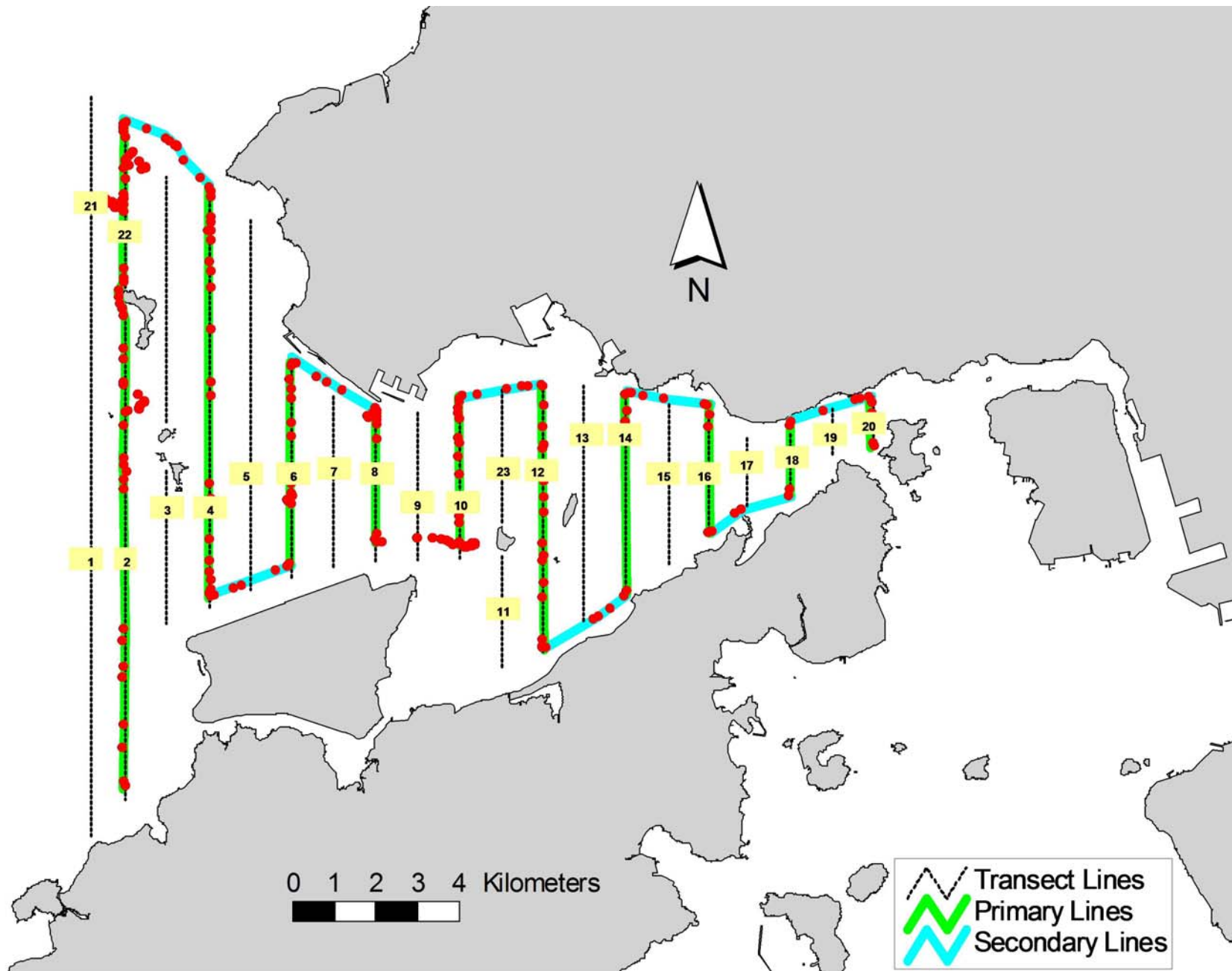


Figure 4. Survey Route on January 21st, 2014 (from HKLR03 project)

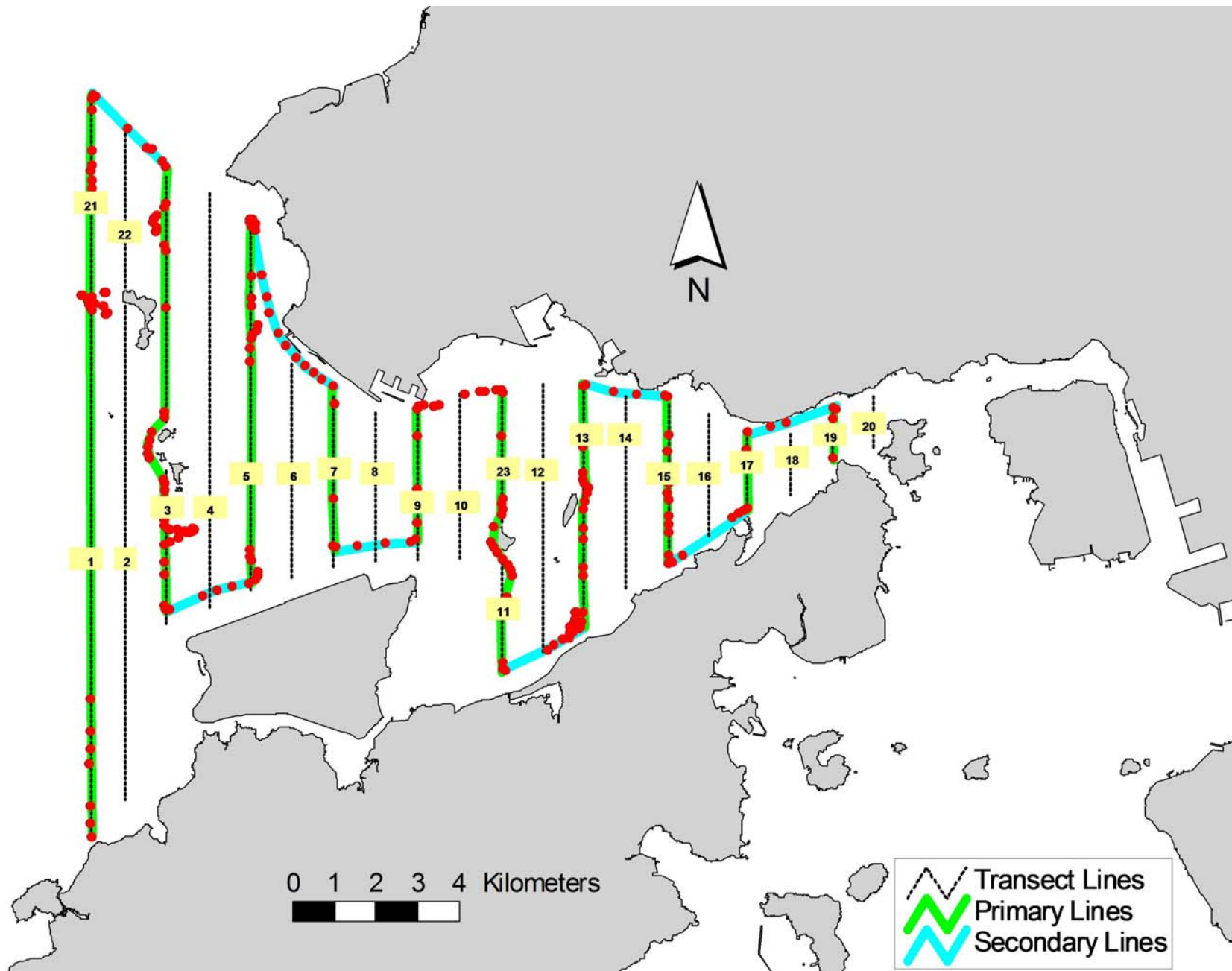


Figure 5. Survey Route on January 23rd, 2014 (from HKLR03 project)

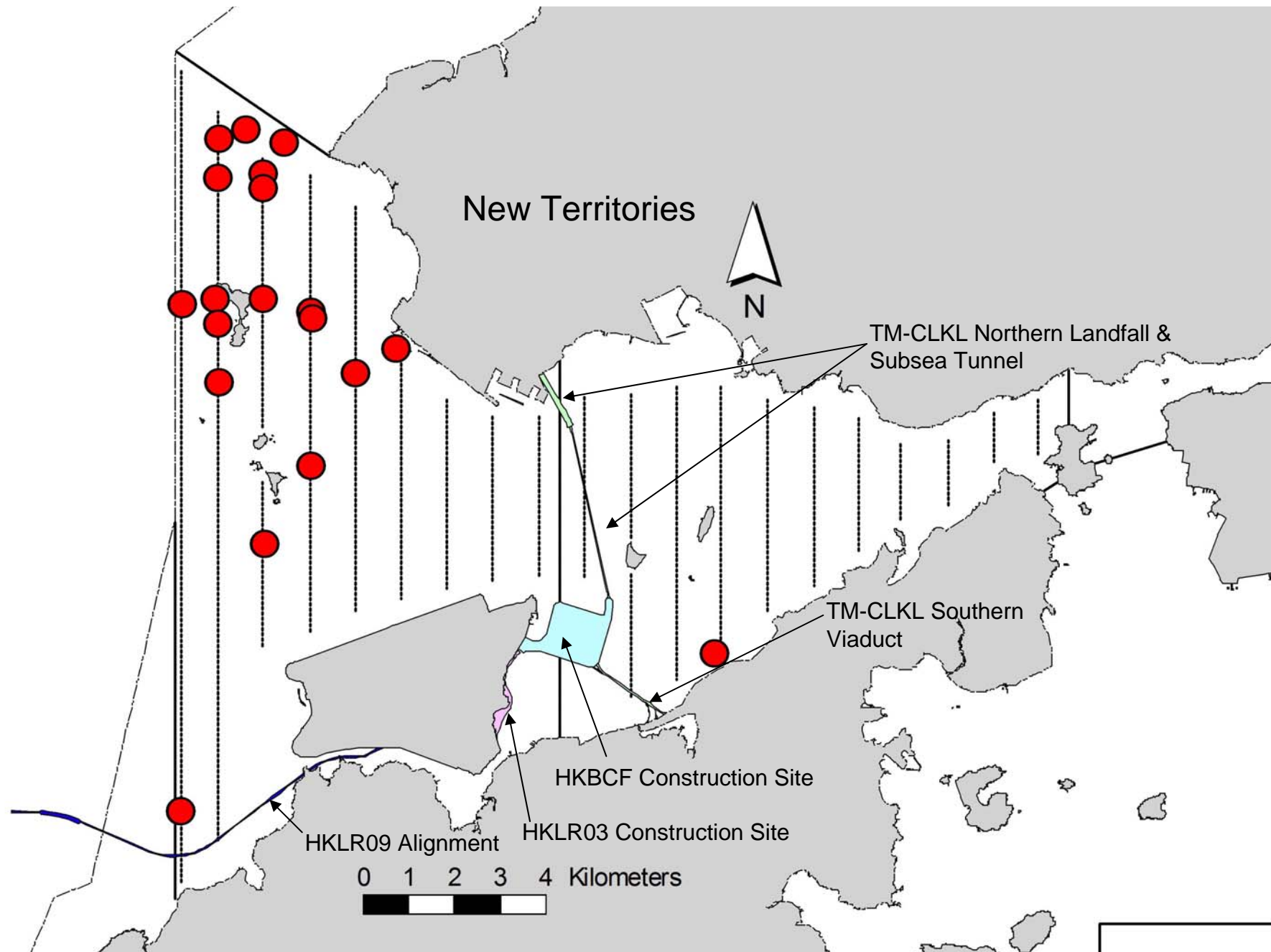


Figure 6. Distribution of Chinese White Dolphin Sightings During January 2014 HKLR03 Monitoring Surveys

Appendix I. HKLR03 Survey Effort Database (January 2014)

(Abbreviations: BEAU = Beaufort Sea State; P = Primary Line Effort; S = Secondary Line Effort)

DATE	AREA	BEAU	EFFORT	SEASON	VESSEL	TYPE	P/S
7-Jan-14	NE LANTAU	2	1.09	WINTER	STANDARD31516	HKLR	P
7-Jan-14	NE LANTAU	3	14.05	WINTER	STANDARD31516	HKLR	P
7-Jan-14	NE LANTAU	4	1.01	WINTER	STANDARD31516	HKLR	P
7-Jan-14	NE LANTAU	2	3.39	WINTER	STANDARD31516	HKLR	S
7-Jan-14	NE LANTAU	3	7.60	WINTER	STANDARD31516	HKLR	S
7-Jan-14	NW LANTAU	2	9.81	WINTER	STANDARD31516	HKLR	P
7-Jan-14	NW LANTAU	3	28.88	WINTER	STANDARD31516	HKLR	P
7-Jan-14	NW LANTAU	2	8.13	WINTER	STANDARD31516	HKLR	S
7-Jan-14	NW LANTAU	3	3.43	WINTER	STANDARD31516	HKLR	S
9-Jan-14	NE LANTAU	1	4.79	WINTER	STANDARD31516	HKLR	P
9-Jan-14	NE LANTAU	2	14.76	WINTER	STANDARD31516	HKLR	P
9-Jan-14	NE LANTAU	1	2.30	WINTER	STANDARD31516	HKLR	S
9-Jan-14	NE LANTAU	2	8.28	WINTER	STANDARD31516	HKLR	S
9-Jan-14	NW LANTAU	2	10.13	WINTER	STANDARD31516	HKLR	P
9-Jan-14	NW LANTAU	3	21.20	WINTER	STANDARD31516	HKLR	P
9-Jan-14	NW LANTAU	2	5.02	WINTER	STANDARD31516	HKLR	S
9-Jan-14	NW LANTAU	3	2.06	WINTER	STANDARD31516	HKLR	S
21-Jan-14	NE LANTAU	2	4.00	WINTER	STANDARD 31516	HKLR	P
21-Jan-14	NE LANTAU	3	15.27	WINTER	STANDARD 31516	HKLR	P
21-Jan-14	NE LANTAU	4	1.50	WINTER	STANDARD 31516	HKLR	P
21-Jan-14	NE LANTAU	3	10.76	WINTER	STANDARD 31516	HKLR	S
21-Jan-14	NE LANTAU	4	0.40	WINTER	STANDARD 31516	HKLR	S
21-Jan-14	NW LANTAU	2	13.76	WINTER	STANDARD 31516	HKLR	P
21-Jan-14	NW LANTAU	3	14.44	WINTER	STANDARD 31516	HKLR	P
21-Jan-14	NW LANTAU	4	1.29	WINTER	STANDARD 31516	HKLR	P
21-Jan-14	NW LANTAU	2	4.95	WINTER	STANDARD 31516	HKLR	S
21-Jan-14	NW LANTAU	3	3.95	WINTER	STANDARD 31516	HKLR	S
23-Jan-14	NW LANTAU	1	4.93	WINTER	STANDARD31516	HKLR	P
23-Jan-14	NW LANTAU	2	29.22	WINTER	STANDARD31516	HKLR	P
23-Jan-14	NW LANTAU	3	5.21	WINTER	STANDARD31516	HKLR	P
23-Jan-14	NW LANTAU	1	2.20	WINTER	STANDARD31516	HKLR	S
23-Jan-14	NW LANTAU	2	10.18	WINTER	STANDARD31516	HKLR	S
23-Jan-14	NE LANTAU	1	1.41	WINTER	STANDARD31516	HKLR	P
23-Jan-14	NE LANTAU	2	12.52	WINTER	STANDARD31516	HKLR	P
23-Jan-14	NE LANTAU	3	2.59	WINTER	STANDARD31516	HKLR	P
23-Jan-14	NE LANTAU	1	0.47	WINTER	STANDARD31516	HKLR	S
23-Jan-14	NE LANTAU	2	9.53	WINTER	STANDARD31516	HKLR	S

Appendix II. HKLR03 Chinese White Dolphin Sighting Database (January 2014)

(Abbreviations: STG# = Sighting Number; HRD SZ = Dolphin Herd Size; BEAU = Beaufort Sea State; PSD = Perpendicular Distance; BOAT ASSOC. = Fishing Boat Association; P/S: Sighting Made on Primary/Secondary Line)

DATE	STG #	TIME	HRD SZ	AREA	BEAU	PSD	EFFORT	TYPE	NORTHING	EASTING	SEASON	BOAT ASSOC.	P/S
7-Jan-14	1	1258	2	NW LANTAU	3	87	ON	HKLR	825659	809348	WINTER	NONE	S
7-Jan-14	2	1337	1	NW LANTAU	3	125	ON	HKLR	825152	808472	WINTER	NONE	P
7-Jan-14	3	1452	3	NW LANTAU	2	1171	ON	HKLR	826673	806456	WINTER	NONE	P
7-Jan-14	4	1515	6	NW LANTAU	2	5	ON	HKLR	829275	806451	WINTER	NONE	P
9-Jan-14	1	1336	6	NW LANTAU	3	24	ON	HKLR	823238	807510	WINTER	NONE	P
9-Jan-14	2	1407	10	NW LANATU	2	62	ON	HKLR	826405	807506	WINTER	NONE	P
9-Jan-14	3	1435	1	NW LANTAU	3	56	ON	HKLR	826272	807526	WINTER	NONE	P
9-Jan-14	4	1534	3	NW LANTAU	2	131	ON	HKLR	826675	805395	WINTER	NONE	S
9-Jan-14	5	1546	1	NW LANTAU	2	113	ON	HKLR	826176	805446	WINTER	NONE	P
21-Jan-14	1	1407	2	NW LANTAU	2	99	ON	HKLR	829916	806916	WINTER	NONE	S
21-Jan-14	2	1426	7	NW LANTAU	2	260	ON	HKLR	830008	805474	WINTER	NONE	P
21-Jan-14	3	1444	2	NW LANTAU	2	84	ON	HKLR	829188	805452	WINTER	NONE	P
21-Jan-14	4	1521	9	NW LANTAU	2	434	ON	HKLR	824969	805464	WINTER	NONE	P
23-Jan-14	1	1015	2	NW LANTAU	2	977	ON	HKLR	816090	804642	WINTER	NONE	P
23-Jan-14	2	1101	4	NW LANTAU	2	329	ON	HKLR	826576	804674	WINTER	NONE	P
23-Jan-14	3	1133	3	NW LANTAU	1	957	ON	HKLR	830195	806061	WINTER	NONE	P
23-Jan-14	4	1202	5	NW LANTAU	1	199	ON	HKLR	828976	806450	WINTER	NONE	P
23-Jan-14	5	1250	2	NW LANTAU	2	372	ON	HKLR	821623	806467	WINTER	NONE	P
23-Jan-14	6	1538	9	NE LANTAU	2	365	ON	HKLR	819337	816344	WINTER	NONE	S

Appendix III. Individual dolphins identified during HKLR03 monitoring surveys in January 2014

ID#	DATE	STG#	AREA
CH34	23/01/14	4	NW LANTAU
CH112	23/01/14	2	NW LANTAU
EL01	21/01/14	1	NW LANTAU
	23/01/14	6	NE LANTAU
NL11	23/01/14	3	NW LANTAU
NL24	09/01/14	2	NW LANTAU
	23/01/14	6	NE LANTAU
NL33	09/01/14	2	NW LANTAU
	23/01/14	6	NE LANTAU
NL46	23/01/14	4	NW LANTAU
NL48	07/01/14	4	NW LANTAU
	09/01/14	2	NW LANTAU
	09/01/14	3	NW LANTAU
	21/01/14	1	NW LANTAU
	23/01/14	3	NW LANTAU
NL80	21/01/14	2	NW LANTAU
NL98	09/01/14	2	NW LANTAU
NL103	07/01/14	4	NW LANTAU
NL104	23/01/14	4	NW LANTAU
NL120	09/01/14	2	NW LANTAU
	23/01/14	6	NE LANTAU
NL123	23/01/14	2	NW LANTAU
	23/01/14	5	NW LANTAU
NL136	07/01/14	1	NW LANTAU
	09/01/14	1	NW LANTAU
NL139	07/01/14	1	NW LANTAU
	09/01/14	1	NW LANTAU
	23/01/14	6	NE LANTAU
NL214	07/01/14	4	NW LANTAU
	21/01/14	4	NW LANTAU
NL220	09/01/14	1	NW LANTAU
NL221	07/01/14	4	NW LANTAU
	21/01/14	4	NW LANTAU
NL226	21/01/14	4	NW LANTAU
NL236	21/01/14	3	NW LANTAU
NL242	09/01/14	2	NW LANTAU
	23/01/14	6	NE LANTAU
NL259	23/01/14	4	NW LANTAU
NL261	23/01/14	4	NW LANTAU
NL272	09/01/14	1	NW LANTAU
	21/01/14	2	NW LANTAU
	23/01/14	6	NE LANTAU
NL284	21/01/14	4	NW LANTAU
NL285	23/01/14	2	NW LANTAU
NL308	21/01/14	2	NW LANTAU
WL162	21/01/14	3	NW LANTAU
WL214	09/01/14	4	NW LANTAU

NL136_20140107_1



NL139_20140107_1



NL48_20140107_4



NL103_20140107_4



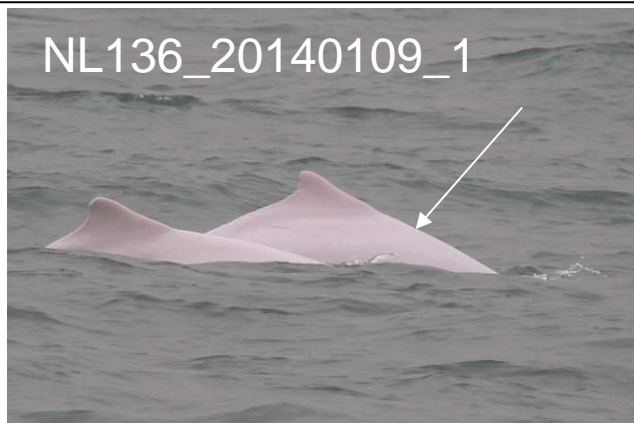
NL214_20140107_4



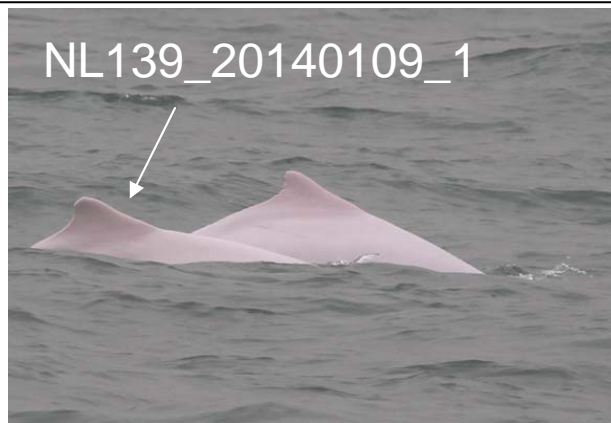
NL221_20140107_4



NL136_20140109_1



NL139_20140109_1



NL220_20140109_1



Appendix IV. Photographs of Identified Individual Dolphins in January 2014 (HKLR03)

NL272_20140109_1



NL24_20140109_2



NL33_20140109_2



NL48_20140109_2



NL98_20140109_2



NL120_20140109_2



NL242_20140109_2



NL48_20140109_3



WL214_20140109_4



EL01_20140121_1



NL48_20140121_1



NL80_20140121_2



NL272_20140121_2



NL308_20140121_2



NL236_20140121_3



WL162_20140121_3



NL214_20140121_4



NL221_20140121_4



NL226_20140121_4



NL284_20140121_4



CH112_20140123_2



NL123_20140123_2



NL285_20140123_2



NL11_20140123_3



NL48_20140123_3



CH34_20140123_4



NL46_20140123_4



NL104_20140123_4



NL259_20140123_4



NL261_20140123_4



NL123_20140123_5



EL01_20140123_6



NL24_20140123_6



NL33_20140123_6



NL120_20140123_6



NL139_20140123_6





Appendix IV. (cont'd)



**Contract No. HY/2012/07 Tuen Mun–Chek Lap Kok Link–Southern
Connection Viaduct Section
Dolphin Intrusion Report**

Date 23-Jan-14 Time 16:58 to 17:18

Sighting No. HY/2012/07 - 1

Sighting Distance (meters) ~150 to 250m.

Sighting Position Within the DEZ of the workfront of the landing platform at TAB D
(see attached map).

Species Chinese White Dolphin
 Finless Porpoise
 Others

Group Size 3 (A total of 4 CWDs were observed, three of which entered the DEZ).

Beaufort 2

Survey Area Dolphin Exclusion Zone for the landing platform workfront.

Survey Type EM&A - Dolphin Exclusion Zone Monitoring during daylight hours.

Chronological Actions Taken

15:51 Dolphins were spotted outside the DEZ by the Dolphin Observers (DO) from the workfront of the landing platform.

15:51 The Contractor was informed by the DO. Since the dolphins were still out of the DEZ, marine construction works continued but the dolphin group was being closely monitored on their traveling route and direction.

15:51 to 16:57 Dolphins remained present outside the DEZ of the landing platform.

16:58 to 17:18 Dolphins entered the DEZ of the landing platform. Marine construction works were suspended by the Contractor at 16:58 upon request by the DO.

17:18 Dolphins were still within the DEZ of the landing platform when marine construction works were scheduled to stop for the day. Marine construction works have been suspended since 16:58 and were not re-started on that day.

17:39 IEC and the Dolphin Specialist were informed by ET about the intrusion event.

17:45 SOR RSIOW was informed by the Contractor about the intrusion event.

Note: Marine construction activities were not re-started after its suspension at 16:58 until the end of the scheduled marine construction works.

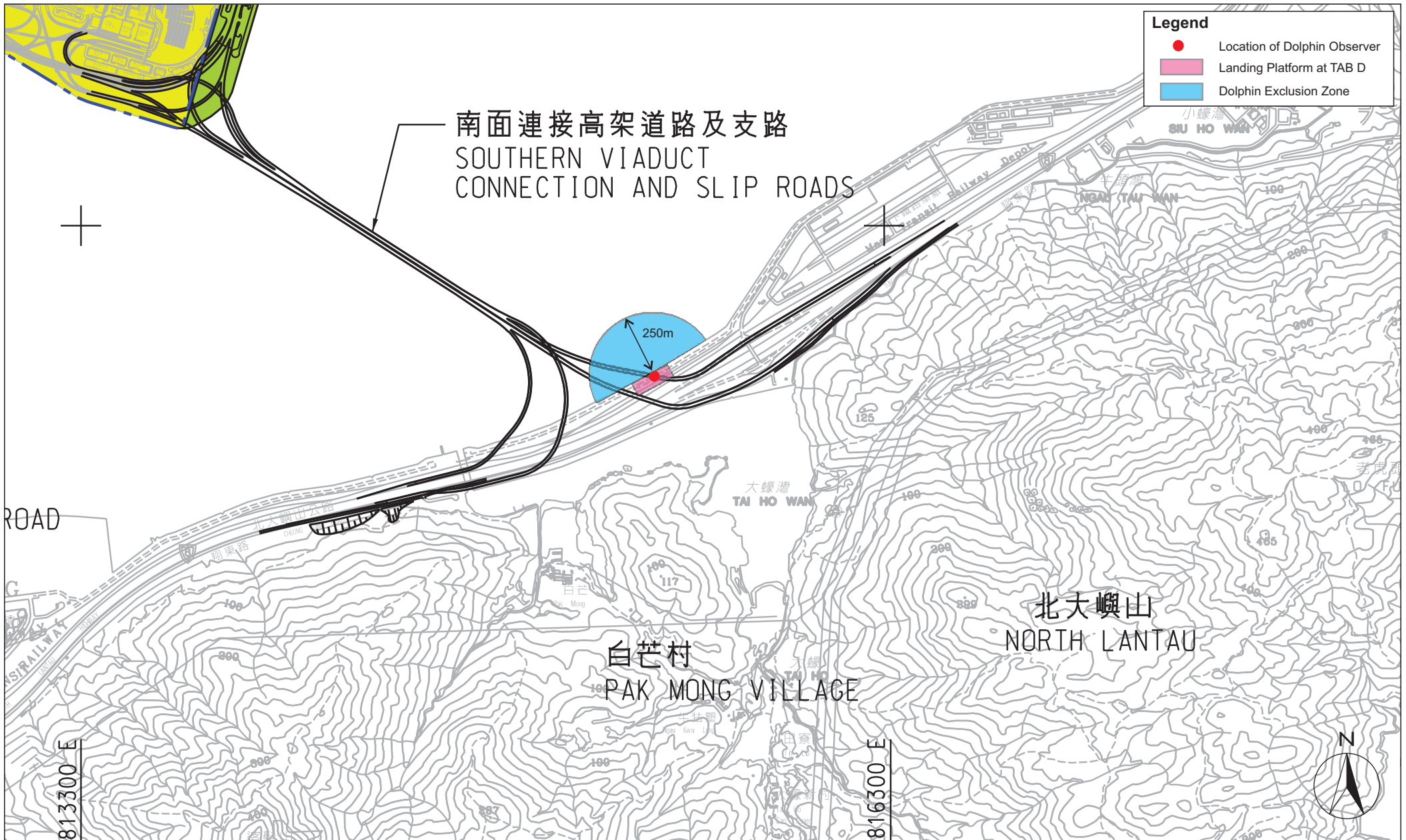


Figure 3.1

Location of Landing Platform at TAB D



Photos of the Sighted CWDs