

Contract No. HY/2011/03
Hong Kong-Zhuhai-Macao Bridge Hong Kong Link Road –
Section between Scenic Hill and Hong Kong Boundary
Crossing Facilities Dolphin Monitoring

11th Quarterly Progress Report (March-May 2015)
submitted to China State Construction Engineering (HK) Ltd.

Submitted by

Samuel K.Y. Hung, Ph.D., Hong Kong Cetacean Research Project

15 June 2015

1. Introduction

- 1.1. The Hong Kong Link Road (HKLR) serves to connect the Hong Kong-Zhuhai-Macao Bridge (HZMB) Main Bridge at the Hong Kong Special Administrative Region (HKSAR) Boundary and the HZMB Hong Kong Boundary Crossing Facilities (HKBCF) located at the northeastern waters of the Hong Kong International Airport. The construction of HKLR is separated into two sections, with the construction for the section between Scenic Hill and Hong Kong Boundary Crossing Facilities being commenced in October 2012.
- 1.2. According to the updated Environmental Monitoring and Audit (EM&A) Manual (for HKLR), monthly line-transect vessel surveys for Chinese White Dolphin should be conducted to cover the Northwest and Northeast Lantau survey areas as in AFCD annual marine mammal monitoring programme.
- 1.3. In October 2012, Hong Kong Cetacean Research Project (HKCRP) has been commissioned to conduct this 54-month dolphin monitoring study in order to collect data on Chinese White Dolphins during the construction phase (i.e. impact period) of the HKLR03 project in Northwest Lantau (NWL) and Northeast Lantau (NEL) survey areas, and to analyze the collected survey data to monitor distribution, encounter rate, activities and occurrence of dolphin calves. Photo-identification will also be collected from individual Chinese White Dolphins to examine their individual range patterns.

- 1.4. From the monitoring results, any changes in dolphin occurrence within the study area will be examined for possible causes, and appropriate actions and additional mitigation measures will be recommended as necessary.
- 1.5. This report is the eleventh quarterly progress report under the HKLR03 construction phase dolphin monitoring programme submitted to the China State Construction Engineering (HK) Limited, summarizing the results of the surveys findings during the period of March to May 2015.

2. Monitoring Methodology

2.1. Vessel-based Line-transect Survey

- 2.1.1. According to the requirement of the updated EM&A manual, dolphin monitoring programme should cover all transect lines in NEL and NWL survey areas twice per month throughout the entire construction period. The co-ordinates of all transect lines are shown in Table 1.

Table 1. Co-ordinates of transect lines

Line No.		Easting	Northing		Line No.		Easting	Northing
1	Start Point	804671	814577		13	Start Point	816506	819480
1	End Point	804671	831404		13	End Point	816506	824859
2	Start Point	805475	815457		14	Start Point	817537	820220
2	End Point	805477	826654		14	End Point	817537	824613
3	Start Point	806464	819435		15	Start Point	818568	820735
3	End Point	806464	822911		15	End Point	818568	824433
4	Start Point	807518	819771		16	Start Point	819532	821420
4	End Point	807518	829230		16	End Point	819532	824209
5	Start Point	808504	820220		17	Start Point	820451	822125
5	End Point	808504	828602		17	End Point	820451	823671
6	Start Point	809490	820466		18	Start Point	821504	822371
6	End Point	809490	825352		18	End Point	821504	823761
7	Start Point	810499	820690		19	Start Point	822513	823268
7	End Point	810499	824613		19	End Point	822513	824321
8	Start Point	811508	820847		20	Start Point	823477	823402
8	End Point	811508	824254		20	End Point	823477	824613

9	Start Point	812516	820892		21	Start Point	805476	827081
9	End Point	812516	824254		21	End Point	805476	830562
10	Start Point	813525	820872		22	Start Point	806464	824033
10	End Point	813525	824657		22	End Point	806464	829598
11	Start Point	814556	818449		23	Start Point	814559	821739
11	End Point	814556	820992		23	End Point	814559	824768
12	Start Point	815542	818807					
12	End Point	815542	824882					

- 2.1.2. The survey team used standard line-transect methods (Buckland et al. 2001) to conduct the systematic vessel surveys, and followed the same technique of data collection that has been adopted over the last 16 years of marine mammal monitoring surveys in Hong Kong developed by HKCRP (see Hung 2013). For each monitoring vessel survey, a 15-m inboard vessel with an open upper deck (about 4.5 m above water surface) was used to make observations from the flying bridge area.
- 2.1.3. Two experienced observers (a data recorder and a primary observer) made up the on-effort survey team, and the survey vessel transited different transect lines at a constant speed of 13-15 km per hour. The data recorder searched with unaided eyes and filled out the datasheets, while the primary observer searched for dolphins and porpoises continuously through 7 x 50 *Fujinon* marine binoculars. Both observers searched the sea ahead of the vessel, between 270° and 90° (in relation to the bow, which is defined as 0°). One to two additional experienced observers were available on the boat to work in shift (i.e. rotate every 30 minutes) in order to minimize fatigue of the survey team members. All observers were experienced in small cetacean survey techniques and identifying local cetacean species.
- 2.1.4. During on-effort survey periods, the survey team recorded effort data including time, position (latitude and longitude), weather conditions (Beaufort sea state and visibility), and distance traveled in each series (a continuous period of search effort) with the assistance of a handheld GPS (*Garmin eTrex Legend*).
- 2.1.5. Data including time, position and vessel speed were also automatically and continuously logged by handheld GPS throughout the entire survey for subsequent review.

2.1.6. When dolphins were sighted, the survey team would end the survey effort, and immediately record the initial sighting distance and angle of the dolphin group from the survey vessel, as well as the sighting time and position. Then the research vessel was diverted from its course to approach the animals for species identification, group size estimation, assessment of group composition, and behavioural observations. The perpendicular distance (PSD) of the dolphin group to the transect line was later calculated from the initial sighting distance and angle.

2.1.7. Survey effort being conducted along the parallel transect lines that were perpendicular to the coastlines (as indicated in Figure 1) was labeled as “primary” survey effort, while the survey effort conducted along the connecting lines between parallel lines was labeled as “secondary” survey effort. According to HKCRP long-term dolphin monitoring data, encounter rates of Chinese white dolphins deduced from effort and sighting data collected along primary and secondary lines were similar in NEL and NWL survey areas (Hung 2013). Therefore, both primary and secondary survey effort were presented as on-effort survey effort in this report.

2.2. *Photo-identification Work*

2.2.1. When a group of Chinese White Dolphins were sighted during the line-transect survey, the survey team would end effort and approach the group slowly from the side and behind to take photographs of them. Every attempt was made to photograph every dolphin in the group, and even photograph both sides of the dolphins, since the colouration and markings on both sides may not be symmetrical.

2.2.2. One to two professional digital cameras (*Canon* EOS 7D and/or 60D models), each equipped with long telephoto lenses (100-400 mm zoom), were available on board for researchers to take sharp, close-up photographs of dolphins as they surfaced. The images were shot at the highest available resolution and stored on Compact Flash memory cards for downloading onto a computer.

2.2.3. All digital images taken in the field were first examined, and those containing potentially identifiable individuals were sorted out. These photographs would then be examined in greater detail, and were carefully compared to the existing Chinese White Dolphin photo-identification catalogue maintained by HKCRP since 1995.

- 2.2.4. Chinese White Dolphins can be identified by their natural markings, such as nicks, cuts, scars and deformities on their dorsal fin and body, and their unique spotting patterns were also used as secondary identifying features (Jefferson 2000).
- 2.2.5. All photographs of each individual were then compiled and arranged in chronological order, with data including the date and location first identified (initial sighting), re-sightings, associated dolphins, distinctive features, and age classes entered into a computer database.

2.3. *Data analysis*

- 2.3.1. Distribution Analysis – The line-transect survey data was integrated with the Geographic Information System (GIS) in order to visualize and interpret different spatial and temporal patterns of dolphin distribution using sighting positions. Location data of dolphin groups were plotted on map layers of Hong Kong using a desktop GIS (ArcView[®] 3.1) to examine their distribution patterns in details. The dataset was also stratified into different subsets to examine distribution patterns of dolphin groups with different categories of group sizes, young calves and activities.
- 2.3.2. Encounter rate analysis – Encounter rates of Chinese white dolphins (number of on-effort sightings per 100 km of survey effort, and total number of dolphins sighted on-effort per 100 km of survey effort) were calculated in NEL and NWL survey areas in relation to the amount of survey effort conducted during each month of monitoring survey. Dolphin encounter rates were calculated in two ways for comparisons with the HZMB baseline monitoring results as well as to AFCD long-term marine mammal monitoring results.

Firstly, for the comparison with the HZMB baseline monitoring results, the encounter rates were calculated using primary survey effort alone, and only data collected under Beaufort 3 or below condition would be used for encounter rate analysis. The average encounter rate of sightings (STG) and average encounter rate of dolphins (ANI) were deduced based on the encounter rates from six events during the present quarter (i.e. six sets of line-transect surveys in North Lantau), which was also compared with the one deduced from the six events during the baseline period (i.e. six sets of line-transect surveys in North Lantau).

Secondly, the encounter rates were calculated using both primary and secondary survey effort collected under Beaufort 3 or below condition as in AFCD long-term monitoring study. The encounter rate of sightings and dolphins were deduced by dividing the total number of on-effort sightings (STG) and total number of dolphins (ANI) by the amount of survey effort for the entire quarterly period (March-May 2015).

- 2.3.3. Quantitative grid analysis on habitat use – To conduct quantitative grid analysis of habitat use, positions of on-effort sightings of Chinese White Dolphins collected during the quarterly impact phase monitoring period were plotted onto 1-km² grids among NWL and NEL survey areas on GIS. Sighting densities (number of on-effort sightings per km²) and dolphin densities (total number of dolphins from on-effort sightings per km²) were then calculated for each 1 km by 1 km grid with the aid of GIS. Sighting density grids and dolphin density grids were then further normalized with the amount of survey effort conducted within each grid. The total amount of survey effort spent on each grid was calculated by examining the survey coverage on each line-transect survey to determine how many times the grid was surveyed during the study period. For example, when the survey boat traversed through a specific grid 50 times, 50 units of survey effort were counted for that grid. With the amount of survey effort calculated for each grid, the sighting density and dolphin density of each grid were then normalized (i.e. divided by the unit of survey effort).

The newly-derived unit for sighting density was termed SPSE, representing the number of on-effort sightings per 100 units of survey effort. In addition, the derived unit for actual dolphin density was termed DPSE, representing the number of dolphins per 100 units of survey effort. Among the 1-km² grids that were partially covered by land, the percentage of sea area was calculated using GIS tools, and their SPSE and DPSE values were adjusted accordingly. The following formulae were used to estimate SPSE and DPSE in each 1-km² grid within the study area:

$$\begin{aligned} \text{SPSE} &= ((S / E) \times 100) / \text{SA}\% \\ \text{DPSE} &= ((D / E) \times 100) / \text{SA}\% \end{aligned}$$

where S = total number of on-effort sightings
 D = total number of dolphins from on-effort sightings
 E = total number of units of survey effort
 SA% = percentage of sea area

- 2.3.4. Behavioural analysis – When dolphins were sighted during vessel surveys, their

behaviour was observed. Different activities were categorized (i.e. feeding, milling/resting, traveling, socializing) and recorded on sighting datasheets. This data was then input into a separate database with sighting information, which can be used to determine the distribution of behavioural data with a desktop GIS. Distribution of sightings of dolphins engaged in different activities and behaviours would then be plotted on GIS and carefully examined to identify important areas for different activities of the dolphins.

- 2.3.5. Ranging pattern analysis – Location data of individual dolphins that occurred during the 3-month impact phase monitoring period were obtained from the dolphin sighting database and photo-identification catalogue. To deduce home ranges for individual dolphins using the fixed kernel methods, the program Animal Movement Analyst Extension, was loaded as an extension with ArcView[®] 3.1 along with another extension Spatial Analyst 2.0. Using the fixed kernel method, the program calculated kernel density estimates based on all sighting positions, and provided an active interface to display kernel density plots. The kernel estimator then calculated and displayed the overall ranging area at 95% UD level.

3. Monitoring Results

3.1. Summary of survey effort and dolphin sightings

- 3.1.1. During the period of March to May 2015, six sets of systematic line-transect vessel surveys were conducted to cover all transect lines in NWL and NEL survey areas twice per month.
- 3.1.2. From these surveys, a total of 899.81 km of survey effort was collected, with 97.7% of the total survey effort being conducted under favourable weather conditions (i.e. Beaufort Sea State 3 or below with good visibility). Among the two areas, 344.55 km and 555.26 km of survey effort were conducted in NEL and NWL survey areas respectively.
- 3.1.3. The total survey effort conducted on primary lines was 655.32 km, while the effort on secondary lines was 244.49 km. Both survey effort conducted on primary and secondary lines were considered as on-effort survey data. A summary table of the survey effort is shown in Annex I.
- 3.1.4. During the six sets of monitoring surveys in March-May 2015, a total of seven groups of 25 Chinese White Dolphins were sighted. Four of the seven dolphin

sightings were made during on-effort search. Two of the four on-effort sightings were made on primary lines, while the other two were made on secondary lines. In this quarterly period, all dolphin groups were sighted in NWL, while none of them were sighted in NEL. In fact, no dolphin was sighted in NEL since July 2014, and only one group of four dolphins was sighted there since December 2013 during HKLR03 monitoring surveys. A summary table of the dolphin sightings is shown in Annex II.

3.2. *Distribution*

- 3.2.1. Distribution of dolphin sightings made during monitoring surveys in March to May 2015 is shown in Figure 1. These sightings made in the present quarter were scattered to the western end of the NWL survey area, with no particular concentration (Figure 1). No dolphin was sighted at all in NEL survey area.
- 3.2.2. Notably, all dolphin sightings were made far away from the HKLR03/HKBCF reclamation sites as well as along the entire alignment of Tuen Mun-Chek Lap Kok Link (TMCLKL) during this quarterly period (Figure 1). However, one sighting of a lone individual was made adjacent to the HKLR09 alignment (Figure 1).
- 3.2.3. Sighting distribution of the present impact phase monitoring period (March to May 2015) was compared to the one during the baseline monitoring period (September to November 2011). In the present quarter, dolphins have completely avoided the NEL region, which was in stark contrast to their frequent occurrence around the Brothers Islands, near Shum Shui Kok and in the vicinity of HKBCF reclamation site during the baseline period (Figure 1). The nearly complete abandonment of NEL region by the dolphins has been consistently recorded in the past nine quarters, which has resulted in extremely low to zero dolphin encounter rate in this area.
- 3.2.4. In NWL survey area, dolphin occurrence was also drastically different between the baseline and impact phase quarters. During the present impact monitoring period, much fewer dolphins occurred throughout this survey area than during the baseline period, when many of the dolphin sightings were concentrated between Lung Kwu Chau and Black Point, around Sha Chau, near Pillar Point and to the west of the Chek Lap Kok Airport (Figure 1).
- 3.2.5. Another comparison in dolphin distribution was made between the three quarterly periods of spring months in 2013, 2014 and 2015 (Figure 2). Among the three spring periods, no dolphin sighting was made in NEL in 2014 and 2015, while there were a few sightings made there in 2012 (Figure 2). The near absence of dolphins in this quarter in NEL was probably more related

to the seasonal occurrence that has been consistently recorded in the past.

- 3.2.6. On the other hand, dramatic changes in dolphin distribution in NWL waters have observed in the spring months during the three-year period. In 2013, dolphin regularly occurred throughout the NWL survey area, with higher concentration around Sha Chau and Lung Kwu Chau as well as near Black Point. In 2014, dolphin still occurred around Lung Kwu Chau at a high level, but less frequently in the middle portion of North Lantau region. In 2014, they rarely occurred in NWL survey area with scattered sightings without any particular concentration. The temporal trend indicated that dolphin usage in the NWL region has greatly diminished during the spring months of the past few years.

3.3. *Encounter rate*

- 3.3.1. During the present three-month study period, the encounter rates of Chinese White Dolphins deduced from the survey effort and on-effort sighting data from the primary transect lines under favourable conditions (Beaufort 3 or below) for each set of the surveys in NEL and NWL are shown in Table 2. The average encounter rates deduced from the six sets of surveys were also compared with the ones deduced from the baseline monitoring period (September – November 2011) (Table 3).

Table 2. Dolphin encounter rates (sightings per 100 km of survey effort) during March-May 2015

SURVEY AREA	DOLPHIN MONITORING DATES	Encounter rate (STG) (no. of on-effort dolphin sightings per 100 km of survey effort)	Encounter rate (ANI) (no. of dolphins from all on-effort sightings per 100 km of survey effort)
		Primary Lines Only	Primary Lines Only
Northeast Lantau	Set 1 (4 & 11 Mar 2015)	0.00	0.00
	Set 2 (17 & 26 Mar 2015)	0.00	0.00
	Set 3 (8 & 10 Apr 2015)	0.00	0.00
	Set 4 (17 & 22 Apr 2015)	0.00	0.00
	Set 5 (4 & 8 May 2015)	0.00	0.00
	Set 6 (14 & 18 May 2015)	0.00	0.00
Northwest Lantau	Set 1 (4 & 11 Mar 2015)	1.42	9.93
	Set 2 (17 & 26 Mar 2015)	0.00	0.00
	Set 3 (8 & 10 Apr 2015)	1.40	4.20
	Set 4 (17 & 22 Apr 2015)	0.00	0.00
	Set 5 (4 & 8 May 2015)	0.00	0.00
	Set 6 (14 & 18 May 2015)	0.00	0.00

Table 3. Comparison of average dolphin encounter rates from impact monitoring period (March-May 2015) and baseline monitoring period (September – November 2011) (Note: encounter rates deduced from the baseline monitoring period have been recalculated based only on survey effort and on-effort sighting data made along the primary transect lines under favourable conditions; \pm denotes the standard deviation of the average encounter rates)

	Encounter rate (STG) (no. of on-effort dolphin sightings per 100 km of survey effort)		Encounter rate (ANI) (no. of dolphins from all on-effort sightings per 100 km of survey effort)	
	March-May 2015	September - November 2011	March-May 2015	September - November 2011
Northeast Lantau	0.00	6.00 \pm 5.05	0.00	22.19 \pm 26.81
Northwest Lantau	0.47 \pm 0.73	9.85 \pm 5.85	2.36 \pm 4.07	44.66 \pm 29.85

3.3.2. To facilitate the comparison with the AFCD long-term monitoring results, the encounter rates were also calculated for the present quarter using both primary and secondary survey effort. The encounter rates of sightings (STG) and dolphins (ANI) in NWL were 0.75 sightings and 3.91 dolphins per 100 km of survey effort respectively, while the encounter rates of sightings (STG) and dolphins (ANI) in NEL were both nil for this quarter.

3.3.3. In NEL, the average dolphin encounter rates (both STG and ANI) in the present three-month impact monitoring period were zero, and such low occurrence of dolphins in NEL have been consistently recorded in the past nine quarters (Table 4). It is a serious concern that dolphin occurrence in NEL in the nine quarters (0.0-1.0 for ER(STG) and 0.0-3.9 for ER(ANI)) have been exceptionally low when compared to the baseline period (Table 4). Dolphins have almost vacated from NEL waters since January 2014, with only one group of four dolphins sighted since then.

3.3.4. Moreover, the average dolphin encounter rates (STG and ANI) in NWL during the present impact phase monitoring period were also much lower (reductions of 95.2% and 94.7% respectively) than the ones recorded in the 3-month baseline period, indicating a dramatic decline in dolphin usage of this survey area during the present impact phase period (Table 5).

3.3.5. Even within the same spring quarters, the dolphin encounter rates in NWL during spring 2015 were small fractions of the ones recorded in spring 2013 and 2014 (Table 5).

Table 4. Comparison of average dolphin encounter rates in Northeast Lantau survey area from all quarters of impact monitoring period and baseline monitoring period (September-November 2011) (Note: encounter rates deduced from the baseline monitoring period have been recalculated based only on survey effort and on-effort sighting data made along the primary transect lines under favourable conditions; the encounter rates in spring months were highlighted in blue; \pm denotes the standard deviation of the average encounter rates)

	Encounter rate (STG) (no. of on-effort dolphin sightings per 100 km of survey effort)	Encounter rate (ANI) (no. of dolphins from all on-effort sightings per 100 km of survey effort)
September-November 2011 (Baseline)	6.00 \pm 5.05	22.19 \pm 26.81
December 2012-February 2013 (Impact)	3.14 \pm 3.21	6.33 \pm 8.64
March-May 2013 (Impact)	0.42 \pm 1.03	0.42 \pm 1.03
June-August 2013 (Impact)	0.88 \pm 1.36	3.91 \pm 8.36
September-November 2013 (Impact)	1.01 \pm 1.59	3.77 \pm 6.49
December 2013-February 2014 (Impact)	0.45 \pm 1.10	1.34 \pm 3.29
March-May 2014 (Impact)	0.00	0.00
June-August 2014 (Impact)	0.42 \pm 1.04	1.69 \pm 4.15
September-November 2014 (Impact)	0.00	0.00
December 2014-February 2015 (Impact)	0.00	0.00
March-May 2015 (Impact)	0.00	0.00

Table 5. Comparison of average dolphin encounter rates in Northwest Lantau survey area from all quarters of impact monitoring period and baseline monitoring period (September-November 2011) (Note: encounter rates deduced from the baseline monitoring period have been recalculated based only on survey effort and on-effort sighting data made along the primary transect lines under favourable conditions; the encounter rates in spring months were highlighted in blue; \pm denotes the standard deviation of the average encounter rates)

	Encounter rate (STG) (no. of on-effort dolphin sightings per 100 km of survey effort)	Encounter rate (ANI) (no. of dolphins from all on-effort sightings per 100 km of survey effort)
September-November 2011 (Baseline)	9.85 \pm 5.85	44.66 \pm 29.85
December 2012-February 2013 (Impact)	8.36 \pm 5.03	35.90 \pm 23.10
March-May 2013 (Impact)	7.75 \pm 3.96	24.23 \pm 18.05
June-August 2013 (Impact)	6.56 \pm 3.68	27.00 \pm 18.71
September-November 2013 (Impact)	8.04 \pm 1.10	32.48 \pm 26.51
December 2013-February 2014 (Impact)	8.21 \pm 2.21	32.58 \pm 11.21
March-May 2014 (Impact)	6.51 \pm 3.34	19.14 \pm 7.19
June-August 2014 (Impact)	4.74 \pm 3.84	17.52 \pm 15.12
September-November 2014 (Impact)	5.10 \pm 4.40	20.52 \pm 15.10
December 2014-February 2015 (Impact)	2.91 \pm 2.69	11.27 \pm 15.19
March-May 2015 (Impact)	0.47 \pm 0.73	2.36 \pm 4.07

- 3.3.5. Notably, the first eight consecutive quarters have triggered the Action Levels under the Event and Action Plan, while the previous and present quarters have both triggered the Limit Levels. As discussed recently in Hung (2014), the dramatic decline in dolphin usage of NEL waters in 2012 and 2013 (including the declines in abundance, encounter rate and habitat use in NEL, as well as shifts of individual core areas and ranges away from NEL waters) was possibly related to the HZMB construction works that were commenced in 2012. It appeared that such noticeable decline has already extended to NWL waters progressively in 2013 and 2014.
- 3.3.6. A two-way ANOVA with repeated measures and unequal sample size was conducted to examine whether there were any significant differences in the average encounter rates between the baseline and impact monitoring periods. The two variables that were examined included the two periods (baseline and impact phases) and two locations (NEL and NWL).
- 3.3.7. For the comparison between the baseline period and the present quarter (tenth quarter of the impact phase being assessed), the p-values for the differences in average dolphin encounter rates of STG and ANI were 0.0015 and 0.0139 respectively. If the alpha value is set at 0.05, significant differences were detected between the baseline and present quarters in both dolphin encounter rates of STG and ANI.
- 3.3.8. For the comparison between the baseline period and the cumulative quarters in impact phase (i.e. first ten quarters of the impact phase being assessed), the p-values for the differences in average dolphin encounter rates of STG and ANI were 0.0004 and 0.0001 respectively. Even if the alpha value is set at 0.01, significant differences were detected in both the average dolphin encounter rates of STG and ANI (i.e. between the two periods and the locations).
- 3.3.9. As indicated in both dolphin distribution patterns and encounter rates, dolphin usage has been significantly reduced in NEL and NWL waters in the present quarterly period, and such low occurrence has been consistently documented in previous quarters. This raises serious concern, as the decline in dolphin usage in North Lantau waters could possibly link to the HZMB-related construction activities.
- 3.3.10. To ensure the continuous usage of North Lantau waters by the dolphins, every possible measure should be implemented by the contractors and relevant authorities to minimize all disturbances to the dolphins.

3.4. *Group size*

- 3.4.1. Group size of Chinese White Dolphins ranged from one to eight individuals per group in North Lantau region during March to May 2015. The average dolphin group sizes from these three months were compared with the ones deduced from the baseline period in September to November 2011, as shown in Table 6.

Table 6. Comparison of average dolphin group sizes from impact monitoring period (March – May 2015) and baseline monitoring period (September – November 2011) (Note: \pm denotes the standard deviation of the average group size)

	Average Dolphin Group Size	
	March – May 2015	September – November 2011
Overall	3.57 \pm 2.82 (n = 7)	3.72 \pm 3.13 (n = 66)
Northeast Lantau	0.00	3.18 \pm 2.16 (n = 17)
Northwest Lantau	3.57 \pm 2.82 (n = 7)	3.92 \pm 3.40 (n = 49)

- 3.4.2. The average dolphin group sizes in NWL waters during March to May 2015 were slightly smaller than the ones recorded during the three-month baseline period (Table 6). Five of the seven groups were composed of 1-3 individuals only, while none of the dolphin group had more than 10 individuals.

- 3.4.3. Distribution of dolphins with larger group sizes (five individuals or more per group) during the present quarter is shown in Figure 3, with comparison to the one in baseline period. During the spring of 2015, distribution of the two larger dolphin groups were located near Black Point and to the west of the airport (Figure 3). This distribution pattern was drastically different from the baseline period, when the larger dolphin groups were distributed more evenly in NWL waters with a few more sighted in NEL waters (Figure 3).

- 3.4.4. Notably, none of the larger dolphin groups were sighted near the HKLR03 reclamation site during the present monitoring period (Figure 3).

3.5. *Habitat use*

- 3.5.1. From March to May 2015, there was no particular habitat that was heavily utilized by Chinese White Dolphins in North Lantau waters, as only four grids recorded the presence of dolphins during on-effort search (Figures 4a and 4b). As in the previous quarters, none of the grids in NEL recorded the presence of dolphins in the present quarter. Moreover, all grids near HKLR03/HKBCF

reclamation sites, HKLR09 or TMCLKL alignment did not record any presence of dolphins during on-effort search in the present quarterly period.

- 3.5.2. It should be emphasized that the amount of survey effort collected in each grid during the three-month period was fairly low (6-12 units of survey effort for most grids), and therefore the habitat use pattern derived from the three-month dataset should be treated with caution. A more complete picture of dolphin habitat use pattern will be presented when more survey effort for each grid will be collected throughout the impact phase monitoring programme.
- 3.5.3. When compared with the habitat use patterns during the baseline period, dolphin usage in NEL and NWL has dramatically diminished during the present impact monitoring period (Figure 5). During the baseline period, nine grids between Siu Mo To and Shum Shui Kok recorded moderately high to high dolphin densities, which was in stark contrast to complete absence of dolphins during the present impact phase period (Figure 5).
- 3.5.4. The density patterns between the baseline and impact phase monitoring periods were also very different in NWL, with higher dolphin usage around Sha Chau, near Black Point, to the west of the airport, as well as between Pillar Point and airport platform during the baseline period. However, these once-highly utilized habitats in the past only recorded rare presence of dolphins during the present impact phase period (Figure 5).
- 3.6. *Mother-calf pairs*
 - 3.6.1. During the present quarterly period, no young calves (i.e. unspotted calves or unspotted juveniles) for the second consecutive quarter among the eleven quarters of impact phase monitoring. This absence of young calves is also in stark contrast to their regular occurrence during the baseline period. Their absences should be of a serious concern, and the occurrence of calves should be closely monitored in the upcoming quarters.
- 3.7. *Activities and associations with fishing boats*
 - 3.7.1. Three dolphin sightings were associated with feeding activities, while only one sighting of dolphin was associated with socializing activity during the three-month study period.
 - 3.7.2. The percentage of sightings associated with feeding activities during the present quarter (42.9%) was much higher than the one recorded during the baseline period (11.6%). On the other hand, the percentage of socializing activities during the present impact phase monitoring period (14.3%) was slightly higher than the one recorded during the baseline period (5.4%).

However, the higher percentages of both feeding and socializing activities were probably due to the overall small sample size of dolphin sightings. Notably, none of the seven dolphin groups were engaged in traveling or milling/resting behaviour.

3.7.3. Distribution of dolphins engaged in feeding and socializing activities during the present three-month period is shown in Figure 6. The three sightings of feeding activities were located near Black Point, to the north of the airport platform and near HKLR09 alignment adjacent to Sham Wat Bay respectively (Figure 6). The lone sighting associated with socializing activity was located near Black Point as well (Figure 6). Distribution of dolphin sightings associated with these activities during the impact phase was very different from the distribution pattern of these activities during the baseline period (Figure 6).

3.7.4. As in the past monitoring quarters, none of the seven dolphin groups was found to be associated with an operating fishing vessel in North Lantau waters during the present impact phase period. The extremely rare events of fishing boat association in the present and previous quarters were consistently found, and were likely related to the recent trawl ban being implemented in December 2012 in Hong Kong waters.

3.8. *Summary of photo-identification works*

3.8.1. From March to May 2015, over 800 digital photographs of Chinese White Dolphins were taken during the impact phase monitoring surveys for the photo-identification work.

3.8.2. In total, 16 individuals sighted 18 times altogether were identified (see summary table in Annex III and photographs of identified individuals in Annex IV). All of these 18 re-sightings were made in NWL.

3.8.3. The majority of identified individuals were sighted only once during the three-month period, with the exception of two individuals (NL136 and NL284) being sighted thrice.

3.8.4. Two of these 16 individuals (NL123 and NL285) were also sighted in West Lantau waters during the HKLR09 monitoring surveys for the same three-month period, but the locations of their re-sightings in NWL and WL were not too far apart even though they were separated by the HKLR09 bridge alignment.

- 3.8.5. Three recognized females (NL104, NL123 and NL202) were accompanied with calves during their re-sightings. All three mothers were frequently sighted with their calves throughout the HKLR03 impact phase monitoring period since October 2012.
- 3.9. *Individual range use*
- 3.9.1. Ranging patterns of the 16 individuals identified during the three-month study period were determined by fixed kernel method, and are shown in Annex V.
- 3.9.2. All identified dolphins sighted in this quarter were utilizing their range use in NWL, but have avoided the NEL waters where many of them have utilized as their core areas in the past (Annex V). This is in contrary to the extensive movements between NEL and NWL survey areas observed in the earlier impact monitoring quarters as well as during the baseline period.
- 3.9.3. Notably, a mother-calf pair (i.e. NL123 and NL285) sighted in NWL and NEL waters consistently in the past have extended their range use to WL waters in the present quarter. It should be further monitored to examine whether there has been any consistent shifts of home ranges of some individuals from North Lantau to West Lantau, which could also possibly be related to the HZMB-related construction works.

4. Conclusion

- 4.1. During this quarter of dolphin monitoring, no adverse impact from the activities of this construction project on Chinese White Dolphins was noticeable from general observations.
- 4.2. Although dolphins rarely occurred in the area of HKLR03 construction in the past and during the baseline monitoring period, it is apparent that dolphin usage has been significantly reduced in NEL in 2012-15, and many individuals have shifted away from the important habitat around the Brothers Islands.
- 4.3. It is critical to monitor the dolphin usage in North Lantau region in the upcoming quarters, to determine whether the dolphins are continuously affected by the various construction activities in relation to the HZMB-related works, and whether suitable mitigation measure can be applied to revert the situation.

5. References

- Buckland, S. T., Anderson, D. R., Burnham, K. P., Laake, J. L., Borchers, D. L., and Thomas, L. 2001. Introduction to distance sampling: estimating abundance of biological populations. Oxford University Press, London.
- Hung, S. K. 2008. Habitat use of Indo-Pacific humpback dolphins (*Sousa chinensis*) in Hong Kong. Ph.D. dissertation. University of Hong Kong, Hong Kong, 266 p.
- Hung, S. K. 2013. Monitoring of marine mammals in Hong Kong waters – data collection: final report (2012-13). An unpublished report submitted to the Agriculture, Fisheries and Conservation Department of Hong Kong SAR Government, 168 pp.
- Hung, S. K. 2014. Monitoring of marine mammals in Hong Kong waters – data collection: final report (2013-14). An unpublished report submitted to the Agriculture, Fisheries and Conservation Department of Hong Kong SAR Government, 231 pp.
- Jefferson, T. A. 2000. Population biology of the Indo-Pacific hump-backed dolphin in Hong Kong waters. Wildlife Monographs 144:1-65.

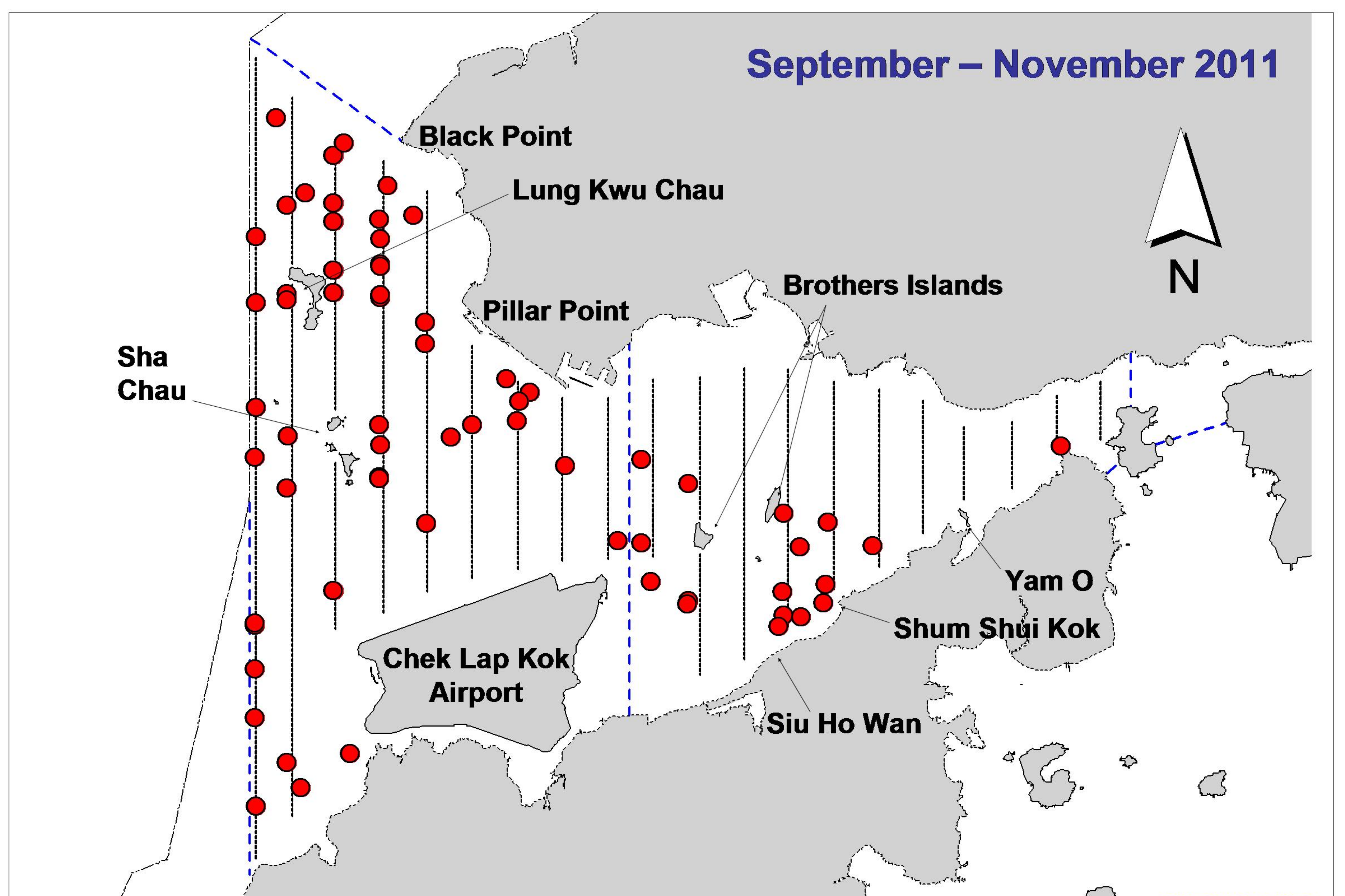
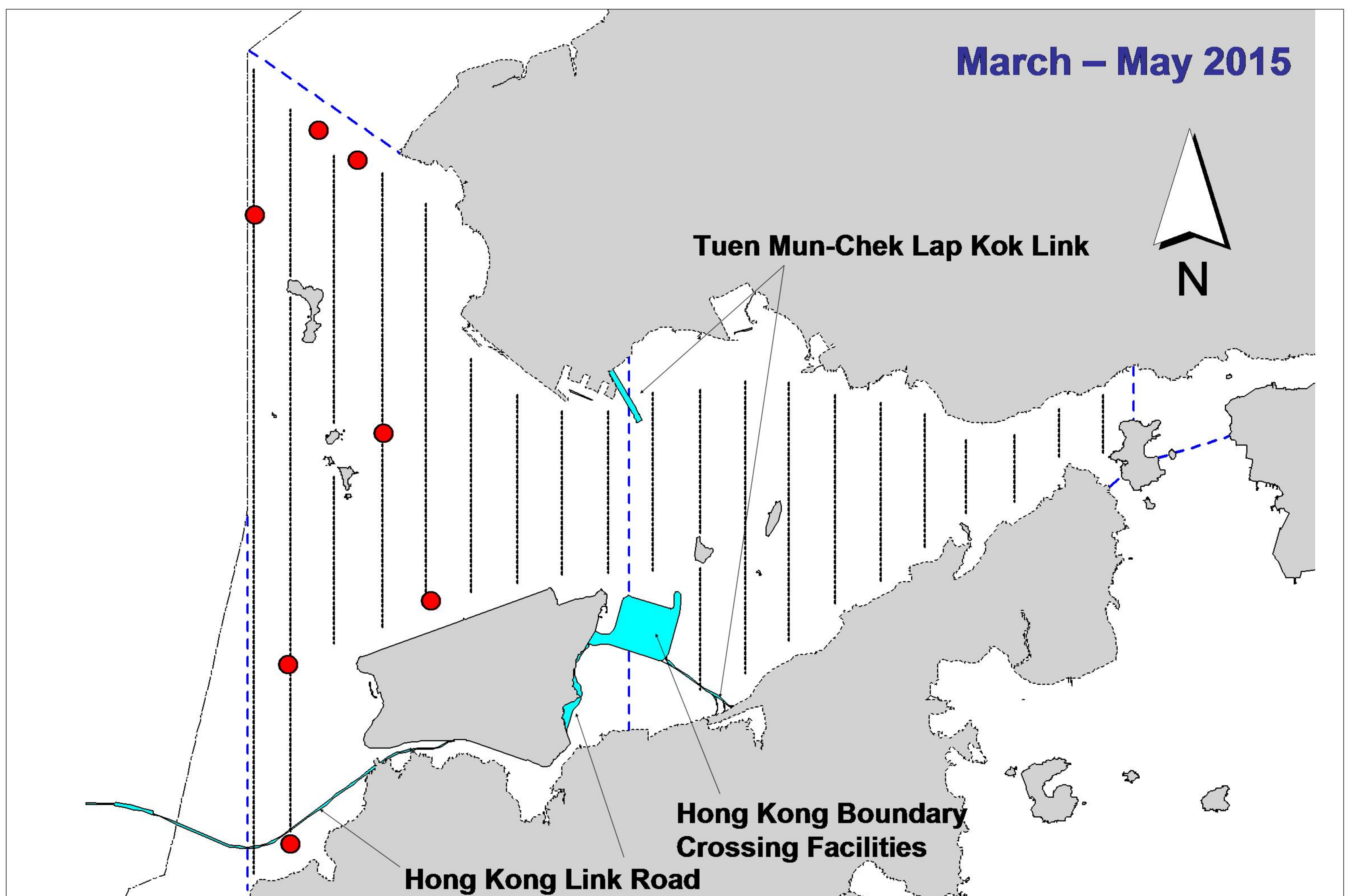


Figure 1. Distribution of Chinese white dolphin sighting in Northwest and Northeast Lantau during HKLR03 impact phase (top) and baseline monitoring surveys (bottom)

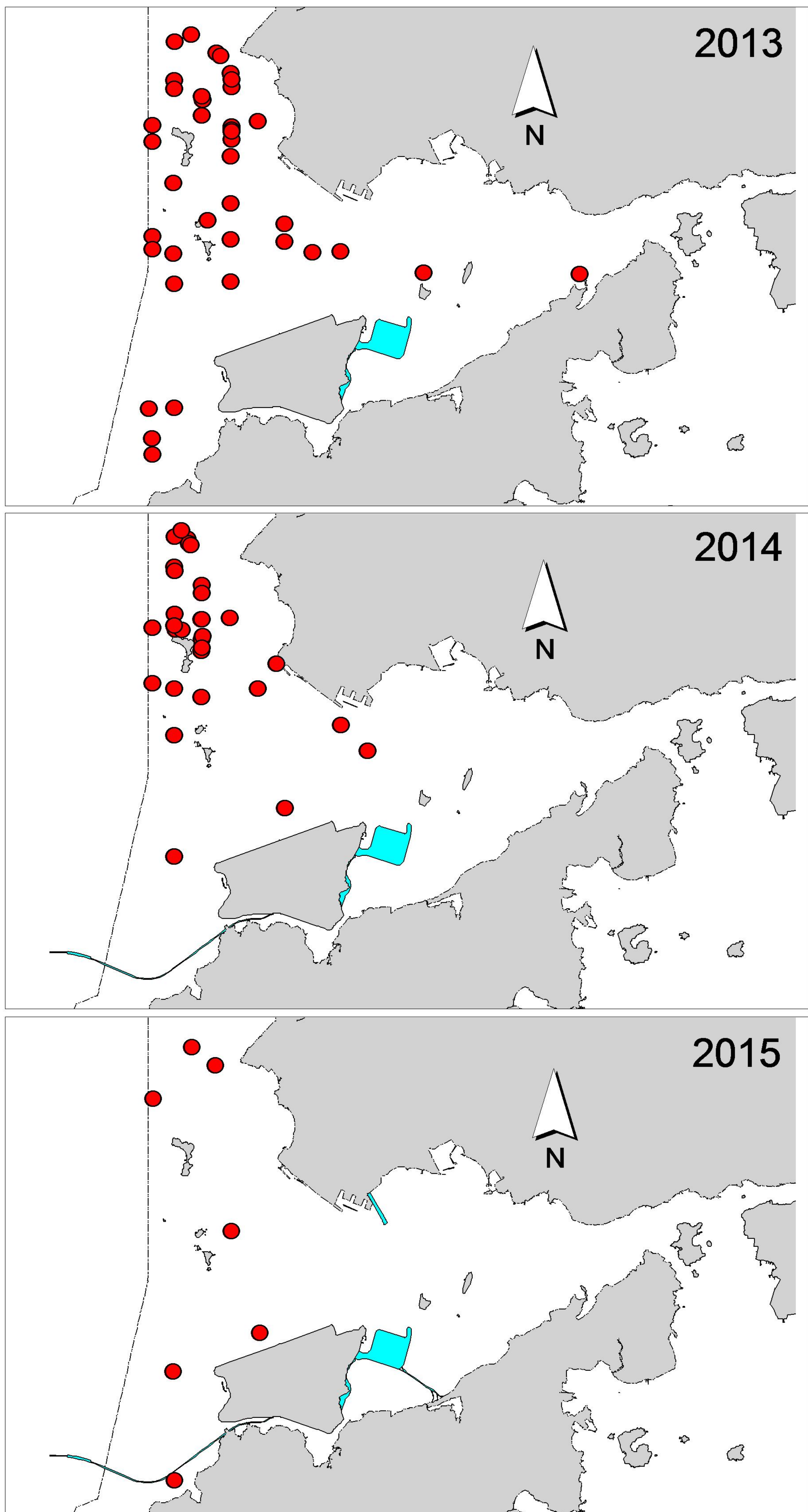


Figure 2. Distribution of Chinese white dolphin sightings in Northwest and Northeast Lantau during the same spring quarters of HKLR03 impact phase in 2013-15

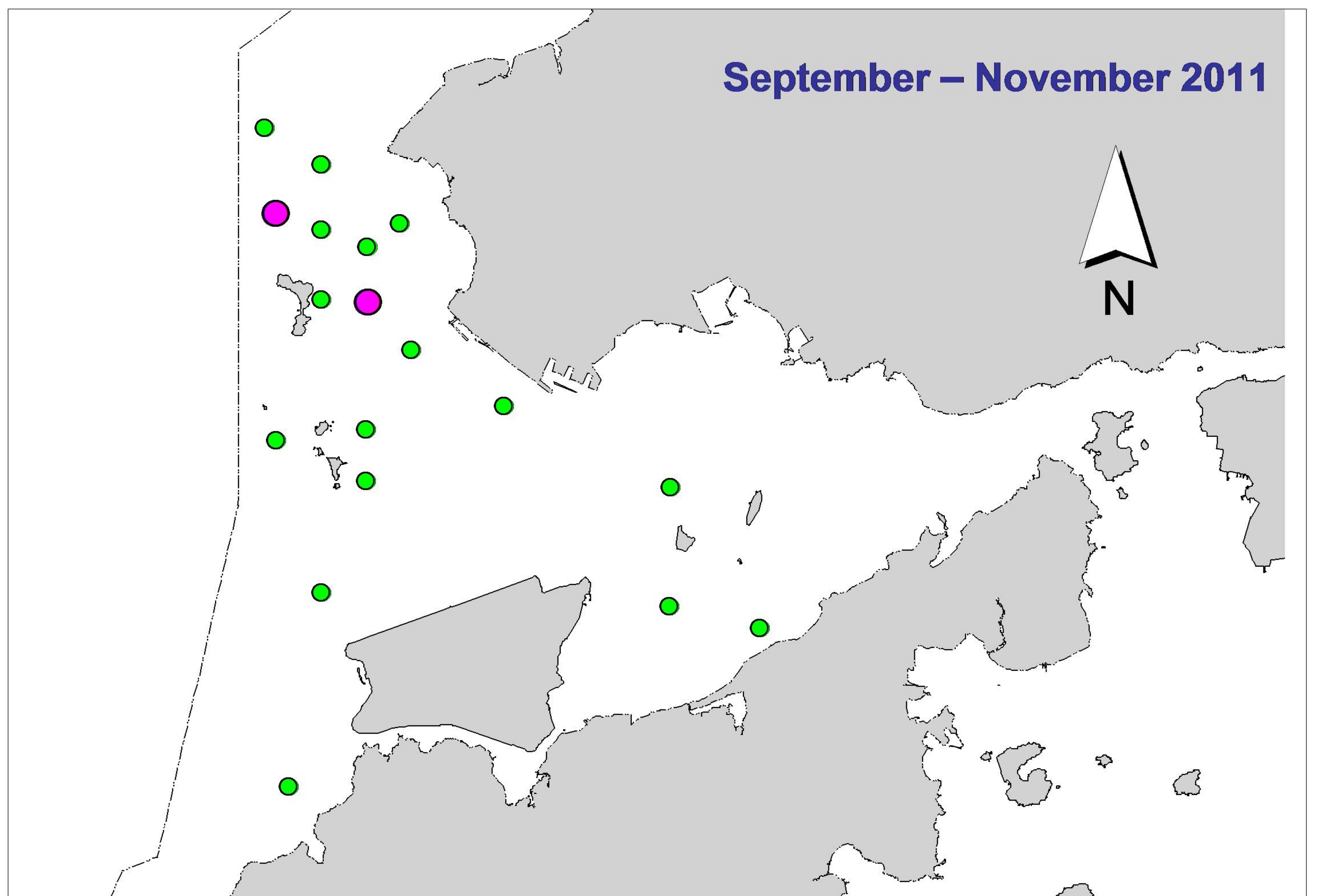
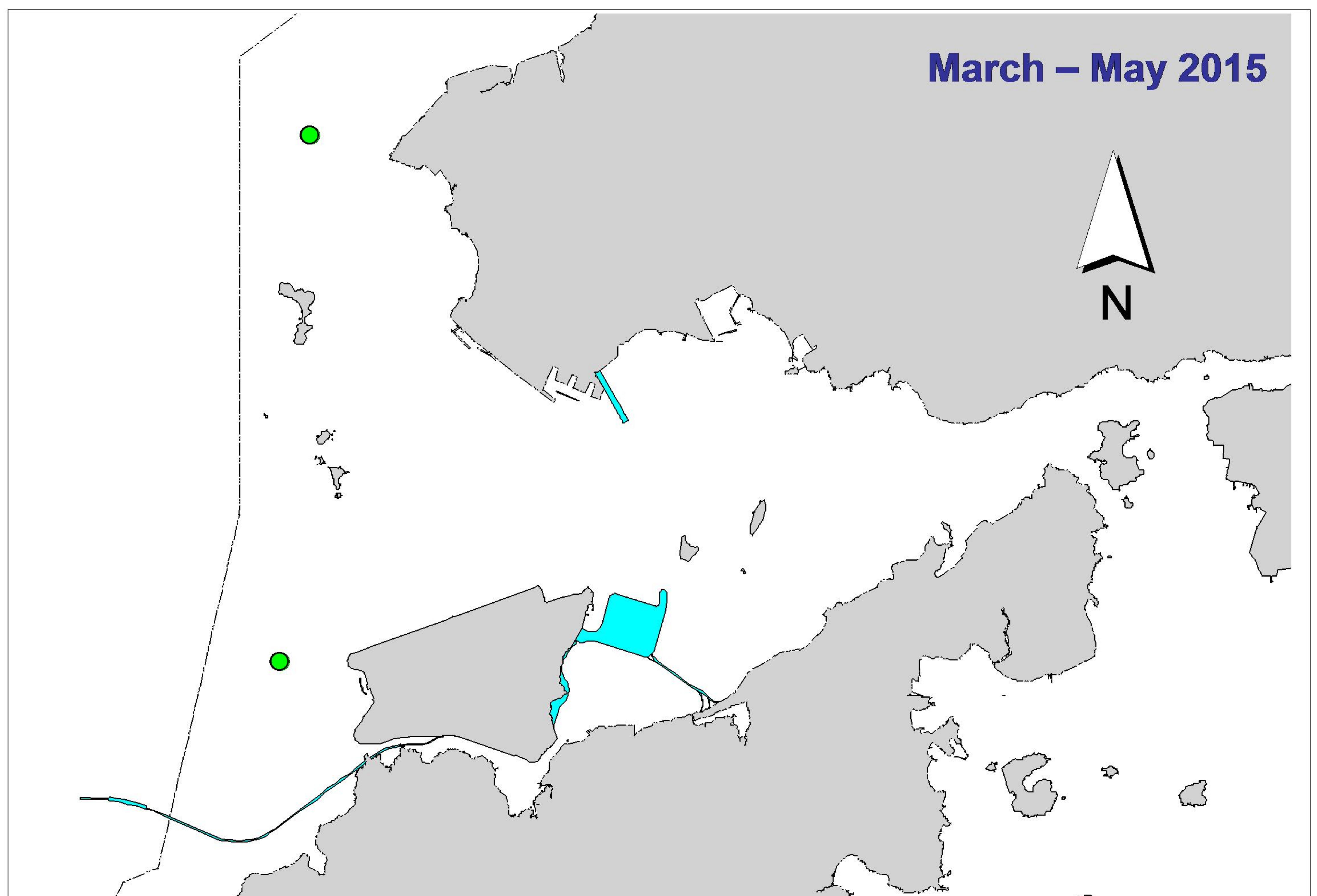


Figure 3. Distribution of Chinese white dolphins with larger group sizes during HKLR03 impact phase (top) and baseline monitoring surveys (bottom) (green dots: group sizes of 5 or more; purple dots: group sizes of 10 or more)

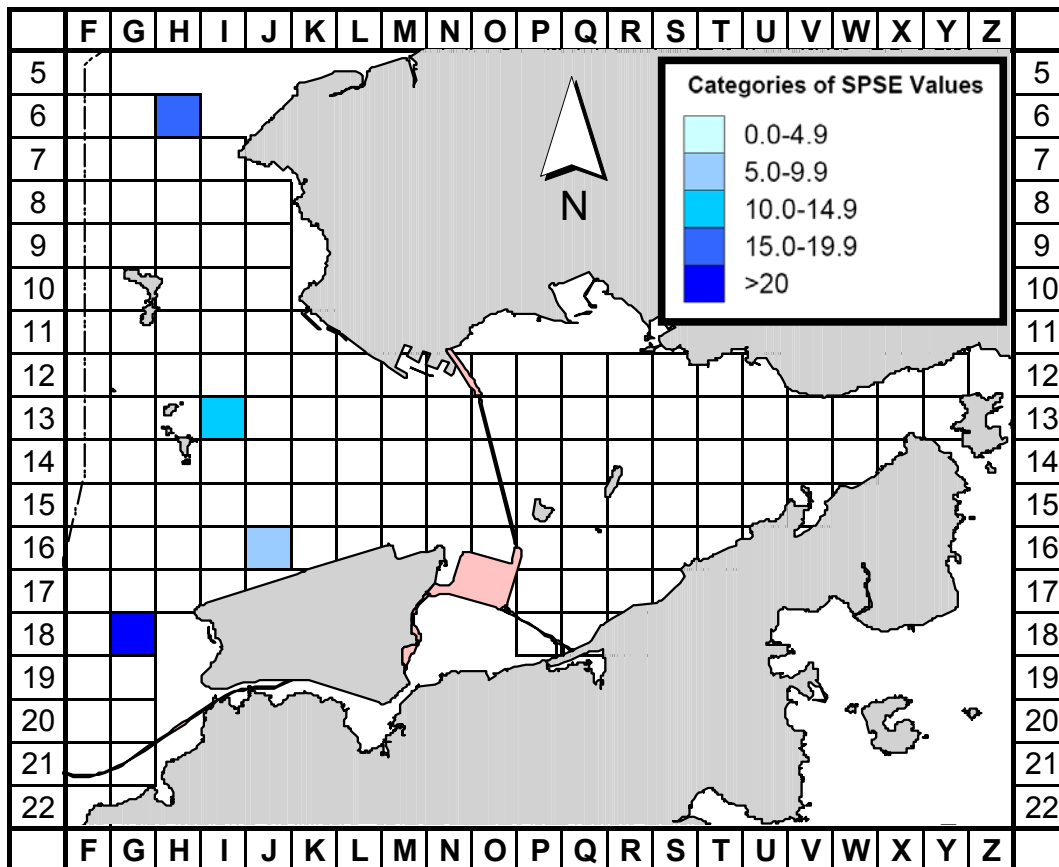


Figure 4a. Sighting density of Chinese white dolphins with corrected survey effort per km² in Northeast and Northwest Lantau survey areas, using data collected during HKLR03 impact monitoring period (Mar-May 15) (SPSE = no. of on-effort sightings per 100 units of survey effort)

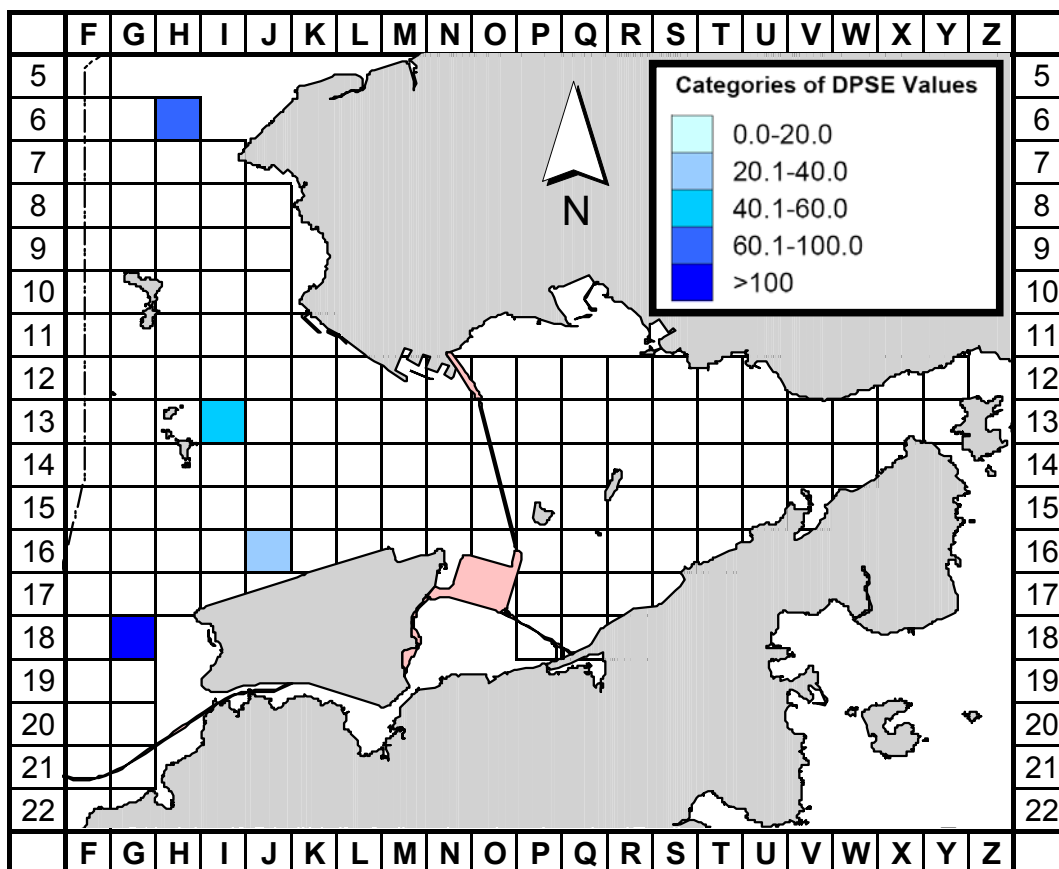


Figure 4b. Density of Chinese white dolphins with corrected survey effort per km² in Northeast and Northwest Lantau survey areas, using data collected during HKLR03 impact monitoring period (Mar-May 15) (DPSE = no. of dolphins per 100 units of survey effort)

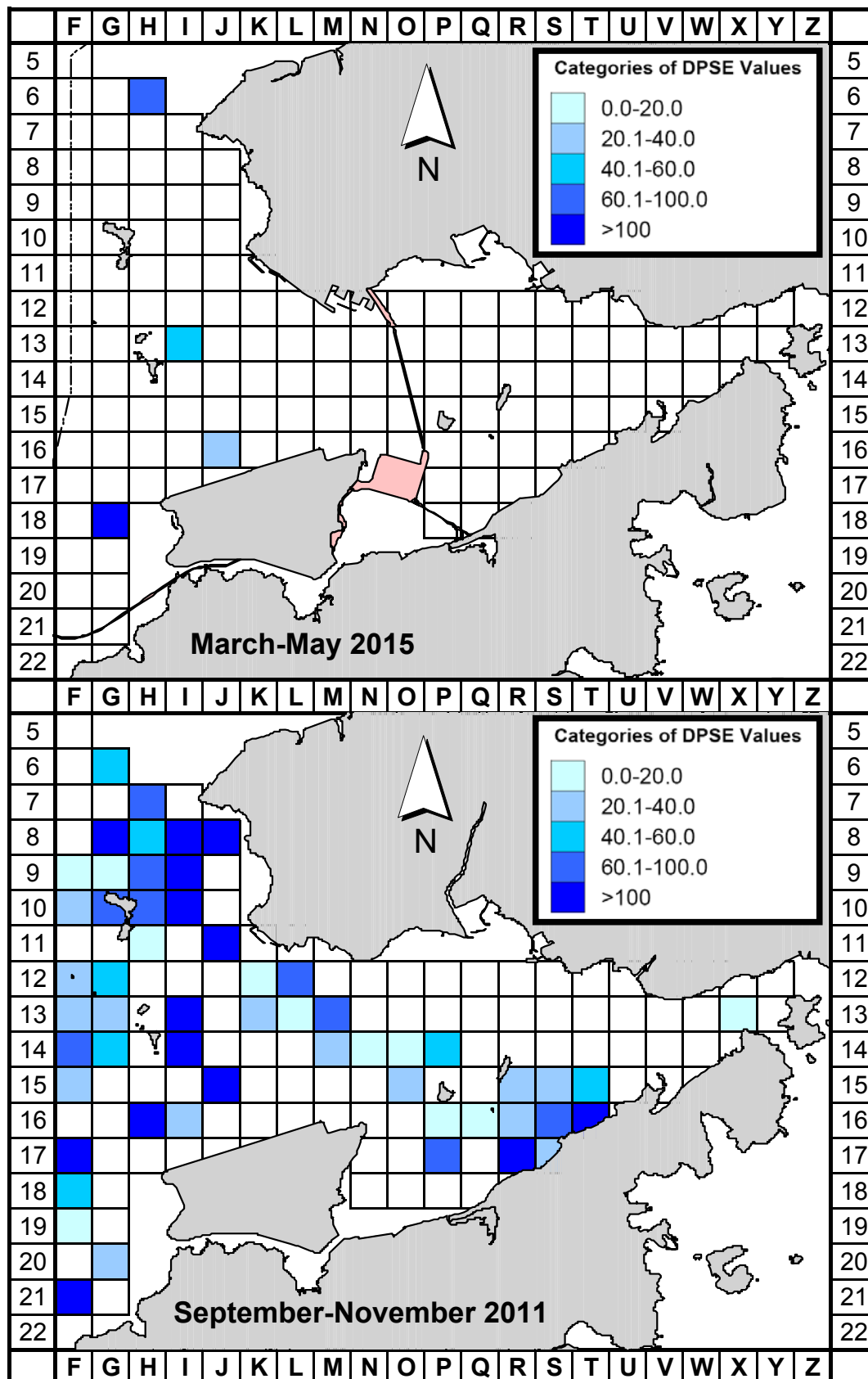


Figure 5. Comparison of density of Chinese white dolphins with corrected survey effort per km² in Northwest and Northeast Lantau survey area between the impact monitoring period (March-May 2015) and baseline monitoring period (September-November 2011) (DPSE = no. of dolphins per 100 units of survey effort)

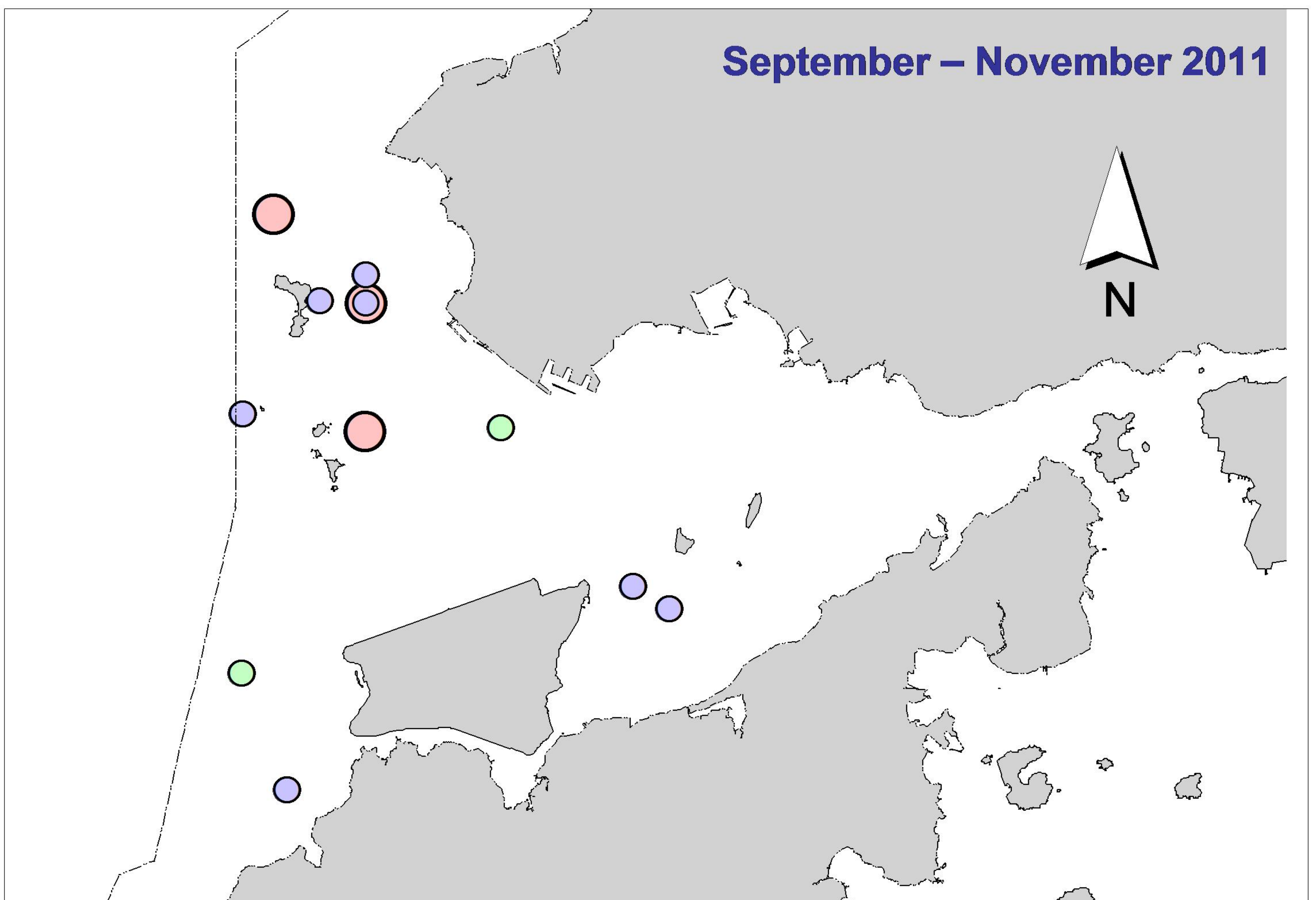
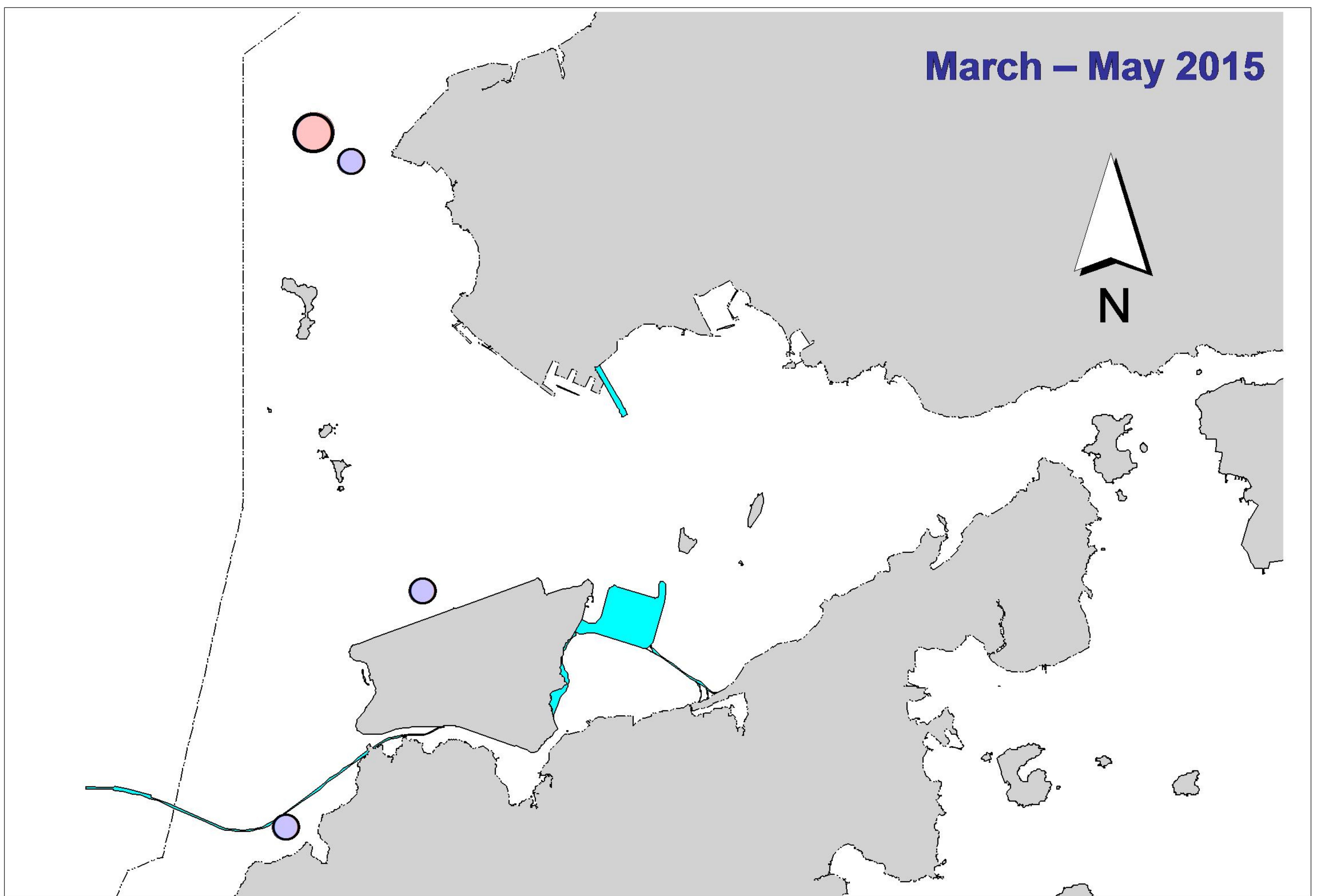


Figure 6. Distribution of Chinese white dolphins engaged in feeding (purple dots), socializing (pink dots) and traveling (green dots) activities during HKLR03 impact phase (top) and baseline monitoring surveys (bottom)

Annex I. HKLR03 Survey Effort Database (March-May 2015)

(Abbreviations: BEAU = Beaufort Sea State; P = Primary Line Effort; S = Secondary Line Effort)

DATE	AREA	BEAU	EFFORT	SEASON	VESSEL	TYPE	P/S
4-Mar-15	NW LANTAU	1	1.07	SPRING	STANDARD31516	HKLR	P
4-Mar-15	NW LANTAU	2	12.71	SPRING	STANDARD31516	HKLR	P
4-Mar-15	NW LANTAU	3	25.62	SPRING	STANDARD31516	HKLR	P
4-Mar-15	NW LANTAU	4	1.40	SPRING	STANDARD31516	HKLR	P
4-Mar-15	NW LANTAU	2	8.00	SPRING	STANDARD31516	HKLR	S
4-Mar-15	NW LANTAU	3	3.30	SPRING	STANDARD31516	HKLR	S
4-Mar-15	NW LANTAU	4	1.00	SPRING	STANDARD31516	HKLR	S
4-Mar-15	NE LANTAU	2	5.38	SPRING	STANDARD31516	HKLR	P
4-Mar-15	NE LANTAU	3	12.87	SPRING	STANDARD31516	HKLR	P
4-Mar-15	NE LANTAU	2	3.40	SPRING	STANDARD31516	HKLR	S
4-Mar-15	NE LANTAU	3	5.39	SPRING	STANDARD31516	HKLR	S
11-Mar-15	NW LANTAU	2	25.99	SPRING	STANDARD31516	HKLR	P
11-Mar-15	NW LANTAU	3	5.09	SPRING	STANDARD31516	HKLR	P
11-Mar-15	NW LANTAU	2	7.53	SPRING	STANDARD31516	HKLR	S
11-Mar-15	NE LANTAU	2	20.05	SPRING	STANDARD31516	HKLR	P
11-Mar-15	NE LANTAU	2	10.95	SPRING	STANDARD31516	HKLR	S
17-Mar-15	NW LANTAU	2	3.26	SPRING	STANDARD31516	HKLR	P
17-Mar-15	NW LANTAU	3	36.14	SPRING	STANDARD31516	HKLR	P
17-Mar-15	NW LANTAU	4	0.80	SPRING	STANDARD31516	HKLR	P
17-Mar-15	NW LANTAU	2	2.20	SPRING	STANDARD31516	HKLR	S
17-Mar-15	NW LANTAU	3	10.40	SPRING	STANDARD31516	HKLR	S
17-Mar-15	NE LANTAU	2	14.63	SPRING	STANDARD31516	HKLR	P
17-Mar-15	NE LANTAU	3	1.97	SPRING	STANDARD31516	HKLR	P
17-Mar-15	NE LANTAU	1	1.94	SPRING	STANDARD31516	HKLR	S
17-Mar-15	NE LANTAU	2	7.69	SPRING	STANDARD31516	HKLR	S
17-Mar-15	NE LANTAU	3	0.68	SPRING	STANDARD31516	HKLR	S
26-Mar-15	NW LANTAU	1	20.26	SPRING	STANDARD31516	HKLR	P
26-Mar-15	NW LANTAU	2	10.63	SPRING	STANDARD31516	HKLR	P
26-Mar-15	NW LANTAU	2	6.76	SPRING	STANDARD31516	HKLR	S
26-Mar-15	NE LANTAU	1	11.38	SPRING	STANDARD31516	HKLR	P
26-Mar-15	NE LANTAU	2	8.40	SPRING	STANDARD31516	HKLR	P
26-Mar-15	NE LANTAU	1	4.32	SPRING	STANDARD31516	HKLR	S
26-Mar-15	NE LANTAU	2	6.2	SPRING	STANDARD31516	HKLR	S
8-Apr-15	NE LANTAU	2	14.22	SPRING	STANDARD31516	HKLR	P
8-Apr-15	NE LANTAU	3	5.10	SPRING	STANDARD31516	HKLR	P
8-Apr-15	NE LANTAU	1	0.50	SPRING	STANDARD31516	HKLR	S
8-Apr-15	NE LANTAU	2	9.09	SPRING	STANDARD31516	HKLR	S
8-Apr-15	NE LANTAU	3	0.99	SPRING	STANDARD31516	HKLR	S
8-Apr-15	NW LANTAU	2	4.96	SPRING	STANDARD31516	HKLR	P
8-Apr-15	NW LANTAU	3	25.95	SPRING	STANDARD31516	HKLR	P
8-Apr-15	NW LANTAU	4	0.84	SPRING	STANDARD31516	HKLR	P
8-Apr-15	NW LANTAU	2	2.29	SPRING	STANDARD31516	HKLR	S
8-Apr-15	NW LANTAU	3	5.26	SPRING	STANDARD31516	HKLR	S
10-Apr-15	NW LANTAU	2	14.40	SPRING	STANDARD31516	HKLR	P
10-Apr-15	NW LANTAU	3	26.10	SPRING	STANDARD31516	HKLR	P
10-Apr-15	NW LANTAU	2	9.40	SPRING	STANDARD31516	HKLR	S
10-Apr-15	NW LANTAU	3	4.20	SPRING	STANDARD31516	HKLR	S
10-Apr-15	NE LANTAU	2	15.44	SPRING	STANDARD31516	HKLR	P
10-Apr-15	NE LANTAU	3	1.30	SPRING	STANDARD31516	HKLR	P
10-Apr-15	NE LANTAU	2	10.06	SPRING	STANDARD31516	HKLR	S
17-Apr-15	NW LANTAU	2	4.84	SPRING	STANDARD31516	HKLR	P

Annex I. (cont'd)

(Abbreviations: BEAU = Beaufort Sea State; P = Primary Line Effort; S = Secondary Line Effort)

DATE	AREA	BEAU	EFFORT	SEASON	VESSEL	TYPE	P/S
17-Apr-15	NW LANTAU	3	29.76	SPRING	STANDARD31516	HKLR	P
17-Apr-15	NW LANTAU	4	5.8	SPRING	STANDARD31516	HKLR	P
17-Apr-15	NW LANTAU	2	0.3	SPRING	STANDARD31516	HKLR	S
17-Apr-15	NW LANTAU	3	7.6	SPRING	STANDARD31516	HKLR	S
17-Apr-15	NW LANTAU	4	4.8	SPRING	STANDARD31516	HKLR	S
17-Apr-15	NE LANTAU	2	3.60	SPRING	STANDARD31516	HKLR	P
17-Apr-15	NE LANTAU	3	11.51	SPRING	STANDARD31516	HKLR	P
17-Apr-15	NE LANTAU	4	2.21	SPRING	STANDARD31516	HKLR	P
17-Apr-15	NE LANTAU	2	4.41	SPRING	STANDARD31516	HKLR	S
17-Apr-15	NE LANTAU	3	5.07	SPRING	STANDARD31516	HKLR	S
22-Apr-15	NE LANTAU	2	20.00	SPRING	STANDARD31516	HKLR	P
22-Apr-15	NE LANTAU	2	10.90	SPRING	STANDARD31516	HKLR	S
22-Apr-15	NW LANTAU	1	3.24	SPRING	STANDARD31516	HKLR	P
22-Apr-15	NW LANTAU	2	25.27	SPRING	STANDARD31516	HKLR	P
22-Apr-15	NW LANTAU	3	3.37	SPRING	STANDARD31516	HKLR	P
22-Apr-15	NW LANTAU	2	7.07	SPRING	STANDARD31516	HKLR	S
22-Apr-15	NW LANTAU	3	0.85	SPRING	STANDARD31516	HKLR	S
4-May-15	NW LANTAU	2	18.60	SPRING	STANDARD31516	HKLR	P
4-May-15	NW LANTAU	3	13.60	SPRING	STANDARD31516	HKLR	P
4-May-15	NW LANTAU	2	2.30	SPRING	STANDARD31516	HKLR	S
4-May-15	NW LANTAU	3	4.80	SPRING	STANDARD31516	HKLR	S
4-May-15	NE LANTAU	1	3.54	SPRING	STANDARD31516	HKLR	P
4-May-15	NE LANTAU	2	10.73	SPRING	STANDARD31516	HKLR	P
4-May-15	NE LANTAU	3	5.40	SPRING	STANDARD31516	HKLR	P
4-May-15	NE LANTAU	2	8.13	SPRING	STANDARD31516	HKLR	S
4-May-15	NE LANTAU	3	2.70	SPRING	STANDARD31516	HKLR	S
8-May-15	NW LANTAU	2	7.57	SPRING	STANDARD31516	HKLR	P
8-May-15	NW LANTAU	3	33.53	SPRING	STANDARD31516	HKLR	P
8-May-15	NW LANTAU	2	2.30	SPRING	STANDARD31516	HKLR	S
8-May-15	NW LANTAU	3	11.20	SPRING	STANDARD31516	HKLR	S
8-May-15	NE LANTAU	2	4.55	SPRING	STANDARD31516	HKLR	P
8-May-15	NE LANTAU	3	12.74	SPRING	STANDARD31516	HKLR	P
8-May-15	NE LANTAU	2	6.25	SPRING	STANDARD31516	HKLR	S
8-May-15	NE LANTAU	3	3.66	SPRING	STANDARD31516	HKLR	S
14-May-15	NE LANTAU	2	12.61	SPRING	STANDARD31516	HKLR	P
14-May-15	NE LANTAU	3	4.43	SPRING	STANDARD31516	HKLR	P
14-May-15	NE LANTAU	2	9.96	SPRING	STANDARD31516	HKLR	S
14-May-15	NW LANTAU	2	5.56	SPRING	STANDARD31516	HKLR	P
14-May-15	NW LANTAU	3	34.27	SPRING	STANDARD31516	HKLR	P
14-May-15	NW LANTAU	4	0.60	SPRING	STANDARD31516	HKLR	P
14-May-15	NW LANTAU	2	8.17	SPRING	STANDARD31516	HKLR	S
14-May-15	NW LANTAU	3	4.80	SPRING	STANDARD31516	HKLR	S
18-May-15	NW LANTAU	2	5.11	SPRING	STANDARD31516	HKLR	P
18-May-15	NW LANTAU	3	24.12	SPRING	STANDARD31516	HKLR	P
18-May-15	NW LANTAU	4	3.40	SPRING	STANDARD31516	HKLR	P
18-May-15	NW LANTAU	2	2.20	SPRING	STANDARD31516	HKLR	S
18-May-15	NW LANTAU	3	4.70	SPRING	STANDARD31516	HKLR	S
18-May-15	NE LANTAU	2	15.10	SPRING	STANDARD31516	HKLR	P
18-May-15	NE LANTAU	3	4.30	SPRING	STANDARD31516	HKLR	P
18-May-15	NE LANTAU	2	10.80	SPRING	STANDARD31516	HKLR	S

Annex II. HKLR03 Chinese White Dolphin Sighting Database (March-May 2015)

(Abberviations: STG# = Sighting Number; HRD SZ = Dolphin Herd Size; BEAU = Beaufort Sea State; PSD = Perpendicular Distance;
BOAT ASSOC. = Fishing Boat Association; P/S: Sighting Made on Primary/Secondary Line\$

DATE	STG #	TIME	HRD SZ	AREA	BEAU	PSD	EFFORT	TYPE	NORTHING	EASTING	SEASON	BOAT ASSOC.	P/S
04-Mar-15	1	1009	1	NW LANTAU	2	ND	OFF	HKLR	815213	805485	SPRING	NONE	
11-Mar-15	1	1347	1	NW LANTAU	2	ND	OFF	HKLR	829495	806976	SPRING	NONE	
11-Mar-15	2	1519	7	NW LANTAU	2	258	ON	HKLR	818956	805421	SPRING	NONE	P
26-Mar-15	1	1201	3	NW LANTAU	2	21	ON	HKLR	820290	808597	SPRING	NONE	S
08-Apr-15	1	1309	3	NW LANTAU	3	142	ON	HKLR	823791	807532	SPRING	NONE	P
10-Apr-15	1	1103	2	NW LANTAU	2	ND	OFF	HKLR	828359	804688	SPRING	NONE	
22-Apr-15	1	1432	8	NW LANTAU	2	354	ON	HKLR	830139	806113	SPRING	NONE	S

Annex III. Individual dolphins identified during HKLR03 monitoring surveys in March-May 2015

ID#	DATE	STG#	AREA
CH34	11/03/15	1	NW LANTAU
NL49	11/03/15	2	NW LANTAU
NL104	22/04/15	1	NW LANTAU
NL123	11/03/15	2	NW LANTAU
NL136	11/03/15	2	NW LANTAU
	08/04/15	1	NW LANTAU
NL153	22/04/15	1	NW LANTAU
NL165	11/03/15	2	NW LANTAU
NL202	22/04/15	1	NW LANTAU
NL236	22/04/15	1	NW LANTAU
NL261	26/03/15	1	NW LANTAU
NL272	26/03/15	1	NW LANTAU
NL284	11/03/15	2	NW LANTAU
	26/03/15	1	NW LANTAU
NL285	11/03/15	2	NW LANTAU
NL286	22/04/15	1	NW LANTAU
NL307	22/04/15	1	NW LANTAU
WL178	04/03/15	1	NW LANTAU

Annex IV. Sixteen individual dolphins that were identified during March-May 2015 under HKLR03 impact phase monitoring surveys



Annex IV. (cont'd)

NL136



NL153



NL165



NL202



Annex IV. (cont'd)



Annex IV. (cont'd)

NL285



NL286



NL307

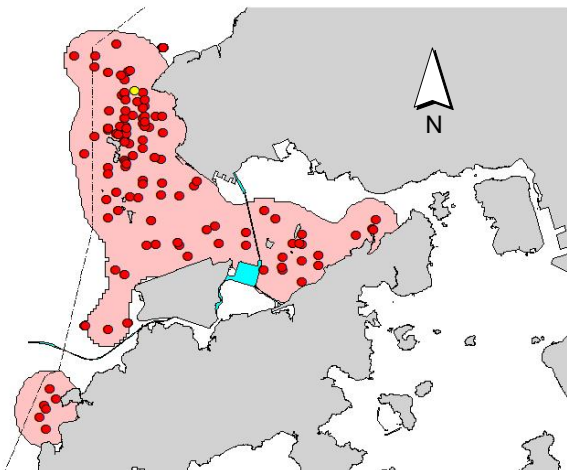


WL178

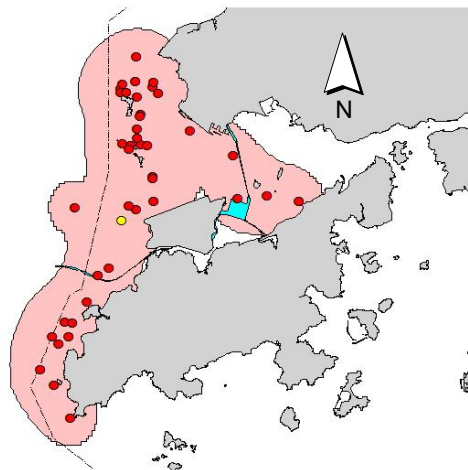


Annex V. Ranging patterns (95% kernel ranges) of 16 individual dolphins that were sighted during HKLR03 impact phase monitoring period (note: yellow dots indicates sightings made in March-May 2015)

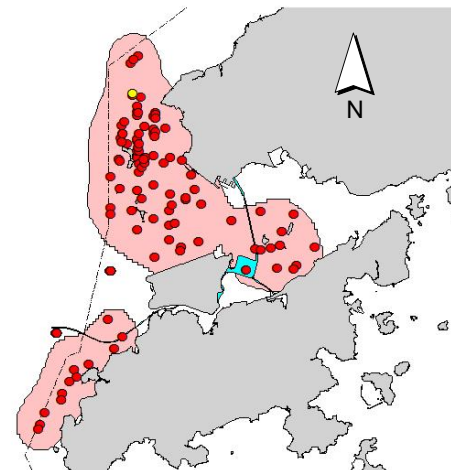
CH34



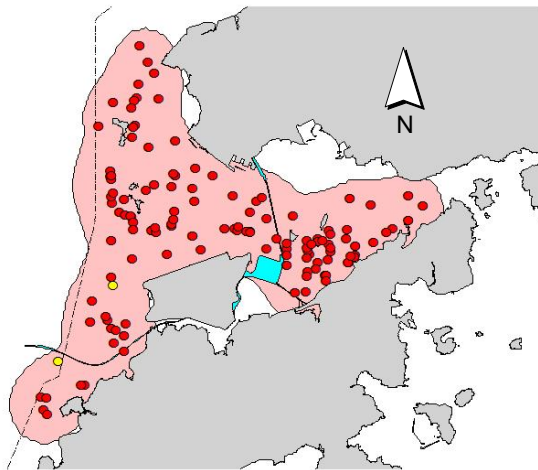
NL49



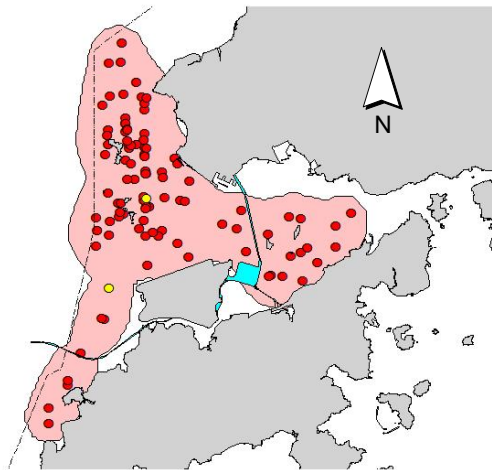
NL104



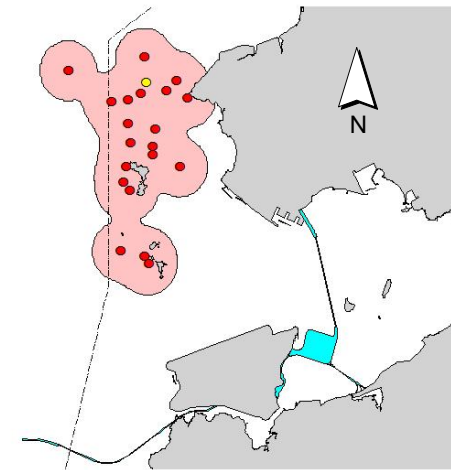
NL123



NL136

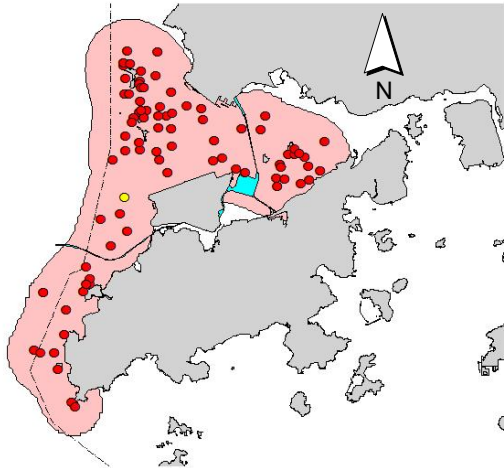


NL153

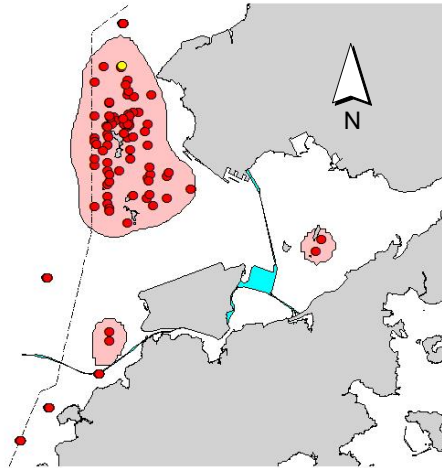


Annex V. (cont'd)

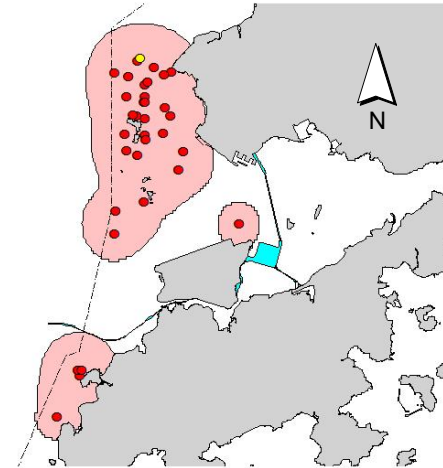
NL165



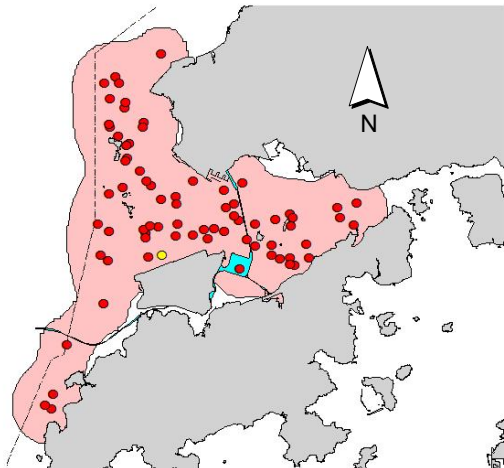
NL202



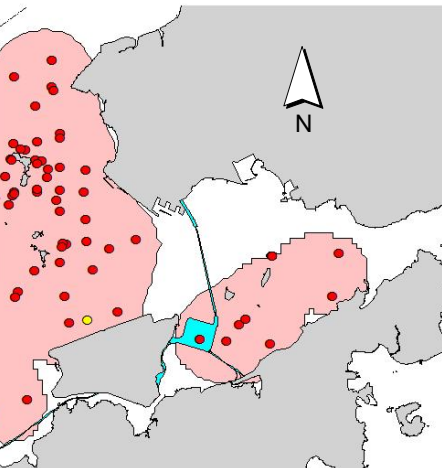
NL236



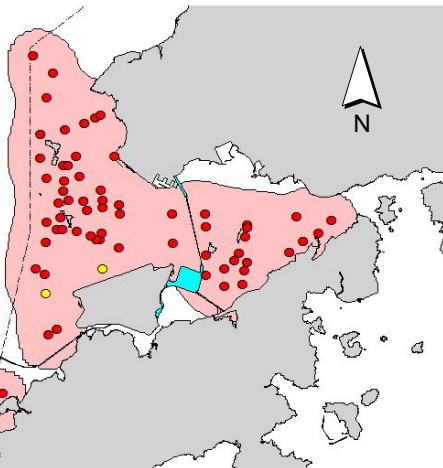
NL261



NL272



NL284



Annex V. (cont'd)

