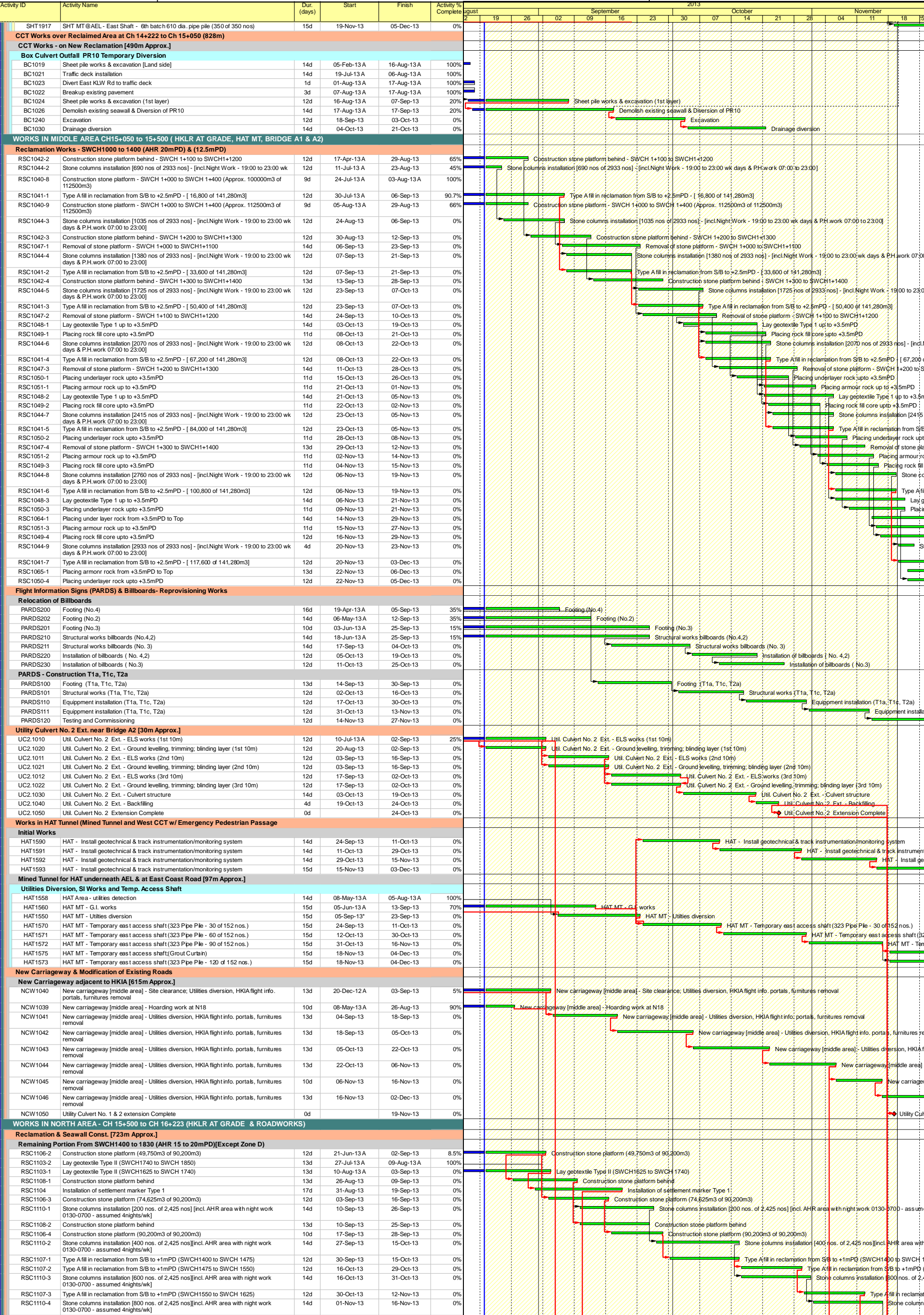






3-Months Rolling Programme (ER Part 5 & SCC 27(9))

(September 2013 to November 2013)



Activity ID	Activity Name	Dur. (days)	Start	Finish	Activity % Complete	2013																											
						August							September							October							November						
						2	9	16	23	30	6	13	20	27	3	10	17	24	31	7	14	21	28	4	11	18	25						
RSC1107-4	Type A fill in reclamation from S/B to +1mPD (SWCH1625 to SWCH 1700)	13d	13-Nov-13	27-Nov-13	0%																												
RSC1110-5	Stone columns installation [1,000 nos. of 2,425 nos][incl. AHR area with night work 0130-0700 - assumed 4nights/wk]	14d	18-Nov-13	03-Dec-13	0%																												
<b>Portion C &amp; D1 From SWCH1850 to 2070 (AHR 17.5 to 20mPD)</b>																																	
RSC1127	Initial survey	2d	27-Jul-13 A	09-Aug-13 A	100%																												
RSC1128	Installation of silt curtain & site boundary buoys	5d	27-Jul-13 A	09-Aug-13 A	100%																												
RSC1131	Lay geotextile Type II	14d	27-Jul-13 A	09-Aug-13 A	100%																												
RSC1126	BCF handover Portion C & D1	0d	01-Aug-13 A		100%																												
RSC1133-1	Construction stone platform (23,750m3 of 95,000m3) - [incl.Night work 1900-0700 wk days & PH. work 0000-2400]	13d	02-Aug-13 A	03-Sep-13	15%																												
RSC1133-2	Construction stone platform (47,500m3 of 95,000m3) - [incl.Night work 1900-0700 wk days & PH. work 0000-2400]	13d	04-Sep-13	18-Sep-13	0%																												
RSC1133-3	Construction stone platform (71,250m3 of 95,000m3) - [incl.Night work 1900-0700 wk days & PH. work 0000-2400]	13d	19-Sep-13	05-Oct-13	0%																												
RSC1136-1	Stone columns installation (150 of 1,478nos)	12d	07-Oct-13	21-Oct-13	0%																												
RSC1133-4	Construction stone platform (95,000m3 of 95,000m3) - [incl.Night work 1900-0700 wk days & PH. work 0000-2400]	12d	07-Oct-13	21-Oct-13	0%																												
RSC1130-1	Removal of existing sloping seawall armour rock (1st batch)	13d	22-Oct-13	05-Nov-13	0%																												
RSC1136-2	Stone columns installation (300 of 1,478nos)	12d	22-Oct-13	04-Nov-13	0%																												
RSC1134-1	Type A fill in reclamation from S/B to +1mPD SWCH1+830 to SWCH1+890	12d	04-Nov-13	16-Nov-13	0%																												
RSC1136-3	Stone columns installation (450 of 1,478nos)	12d	05-Nov-13	18-Nov-13	0%																												
RSC1130-2	Removal of existing sloping seawall armour rock ( Without Details ) (2nd batch)	12d	06-Nov-13	19-Nov-13	0%																												
RSC1134-2	Type A fill in reclamation from S/B to +1mPD SWCH1+890 to SWCH1+950	13d	18-Nov-13	02-Dec-13	0%																												
RSC1136-4	Stone columns installation (600 of 1,478nos)	12d	19-Nov-13	02-Dec-13	0%																												
<b>Reprovisioning Works</b>																																	
<b>Protection Works to Existing Approach Lights &amp; Weather Station</b>																																	
RSC1105-1	Approach Lights - Initial works for affected portals (setting out, monitoring markers)	10d	12-Sep-13	24-Sep-13	0%																												
RSC1105-2	Approach Lights - Protection works to affected portals(EM1, EM2.)	11d	25-Sep-13	08-Oct-13	0%																												
RSC1105-3	Approach Lights - Protection works to affected portals (EM3, EM4)	11d	09-Oct-13	22-Oct-13	0%																												
RSC1105-4	Approach Lights - Protection works to affected portals (EM5)	11d	23-Oct-13	04-Nov-13	0%																												
<b>Works in Bridge A1 &amp; Depressed Road</b>																																	
<b>Bridge A1 - Initial Works and SI Works</b>																																	
BA1.1350	Bridge A1- Traffic Diversion Works & Implement TTA	12d	18-Jan-13 A	11-Sep-13	20%																												
BA1.1360	Site investigation and Utilities diversion at East Coast Road	14d	04-Jun-13 A	11-Sep-13	20%																												
BA1.1412	Establish site access, Site clearance	14d	12-Sep-13	28-Sep-13	0%																												
BA1.1370	Bridge A1- Tree Felling	12d	30-Sep-13	15-Oct-13	0%																												
BA1.1414	Erection of hoarding	14d	30-Sep-13	17-Oct-13	0%																												
BA1.1351	Bridge A1- Traffic Diversion Works & Implement TTA	12d	16-Oct-13	29-Oct-13	0%																												
BA1.1371	Bridge A1- Tree Felling	12d	16-Oct-13	29-Oct-13	0%																												
BA1.1416	Utilities Detection	14d	18-Oct-13	02-Nov-13	0%																												
BA1.1372	Bridge A1- Tree Transplanting	12d	30-Oct-13	12-Nov-13	0%																												
BA1.1418	Site Investigation	14d	04-Nov-13	19-Nov-13	0%																												
BA1.1373	Bridge A1- Tree Transplanting	6d	13-Nov-13	19-Nov-13	0%																												
BA1.1000	Bridge A1 South Abut. & Ramp - Pre-drilling works	14d	20-Nov-13	05-Dec-13	0%																												
<b>Utility Culvert No.1</b>																																	
<b>Utility Culvert No.1 Ext. across the road leading to Cheong Hong Road [48m Approx.]</b>																																	
UC1.1066	Utilities detection	14d	20-May-13 A	04-Sep-13	70%																												
UC1.1169	AA Permit and Approval from relevant Authority	0d	05-Sep-13*		0%																												
UC1.1070	Util. Culvert No. 1 Ext. - ELS works	14d	06-Sep-13	24-Sep-13	0%																												
UC1.1080	Util. Culvert No. 1 Ext. - Ground levelling, trimming; blinding layer	6d	24-Sep-13	02-Oct-13	0%																												
UC1.1090	Util. Culvert No. 1 Ext. - Culvert structure (1st 24m)	14d	02-Oct-13	19-Oct-13	0%																												
UC1.1091	Util. Culvert No. 1 Ext. - Culvert structure (2nd 24m)	14d	19-Oct-13	05-Nov-13	0%																												
UC1.1100	Util. Culvert No. 1 Ext. - Backfilling	12d	05-Nov-13	19-Nov-13	0%																												
UC1.1110	Utility Culvert No. 1 Extension Complete	0d		19-Nov-13	0%																												
<b>New Carriageway &amp; Modification of Existing Roads</b>																																	
<b>New Carriageway adjacent to HKIA [407.5m Approx.]</b>																																	
NCW1140	New carriageway [north area] - Site clearance; HKIA flight info. portals, service utilities, furnitures removal	12d	06-Nov-13	20-Nov-13	0%																												
NCW1141	New carriageway [north area] - Site clearance; HKIA flight info. portals, service utilities, furnitures removal	12d	20-Nov-13	04-Dec-13	0%																												