

Contract No. HY/2011/03 -

Hong Kong- Zhuhai- Macao Bridge

Hong Kong Link Road Section between Scenic Hill and Hong Kong Boundary Crossing Facilities

Notifications of Environmental Quality Limits Exceedances

Notification No.: 286a ver0

Date of Notification: 16 October 2018

Works Inspected: 1-hr TSP monitoring was undertaken on 16 October 2018

Monitoring Location: AMS5 – Ma Wan Chung Village

Parameter: 1-hour TSP monitoring

Action & Limit Level (AL & LL) / Measured Level:

PARAMETER	STATION	AL ( $\mu\text{g}/\text{m}^3$ )	LL ( $\mu\text{g}/\text{m}^3$ )	MEASURED LEVEL, $\mu\text{g}/\text{m}^3$
1-hr TSP (14:47 – 15:47 hours)	Ma Wan Chung Village (AMS5)	352	500	<b>362</b>
1-hr TSP (15:47 – 16:47 hours)	Ma Wan Chung Village (AMS5)	352	500	<b>354</b>
1-hr TSP (16:47 – 17:47 hours)	Ma Wan Chung Village (AMS5)	352	500	<b>370</b>

Notes: ***Bold Italic*** means AL exceedance

***Bold Italic with underline*** means LL exceedance

Possible reason for Action or Limit Level Non-compliance:

Three Action Level exceedances of 1-hr TSP level were recorded for monitoring period from 14:47 – 17:47 hours at AMS5 – Ma Wan Chung Village, on 16 October 2018.

According to the information provided by the Contractor, the following construction activities were undertaken at LCSD Depot, S7 and S9 which are located near AMS5 during the sampling period on 16 October 2018:

- Construction of LCSD Depot
- Reinstatement works of Kwo Lo Wan Road near S7
- Landscaping work at S9

Figure 1 shows the location of construction sites and air monitoring station AMS5. During the site visit undertaken on 16 October 2018, no fugitive dust emission was observed by ET at the construction sites near AMS5. According to information provided by the Contractor, water spraying was provided for dusty materials to maintain the entire surface in a damp condition and haul roads were sprayed with water by water trucks regularly.

Except the exceedances recorded on 16 October 2018, no Action and Limit Level exceedances of 1-hr TSP were recorded at AMS5 on other monitoring days in October 2018 (i.e 2, 5, 11, 18, 22 and 26 October 2018).

The Air Quality Health Index (AQHI) recorded by EPD at the Tung Chung station ranged from 2 (low) to 5 (moderate) during the sampling period on 16 October 2018. The general weather condition during the monitoring period was hazy with low visibility. The hazy weather could cause higher readings of the portable dust meter. It is considered that the exceedances are not related to the construction activities of the Contract and may be caused by the weather condition.

Actions taken/ to be taken:

The Contractor has properly implemented dust control measures efficiently throughout the construction phase. Also, no fugitive dust emission was observed by ET on 16 October 2018 at construction sites near monitoring station AMS5. As such the exceedances recorded at monitoring station AMS5 are unlikely to be related to the Contract. In this case, no immediate actions are required. However, the Contractor is reminded to continuously implement the dust mitigation measures as specified in Environmental Mitigation Implementation Schedule (EMIS), Environmental Management Plan, Method Statements, General and Particular Specifications of this Contract throughout the construction phase.

Reviewed by : Claudine Lee

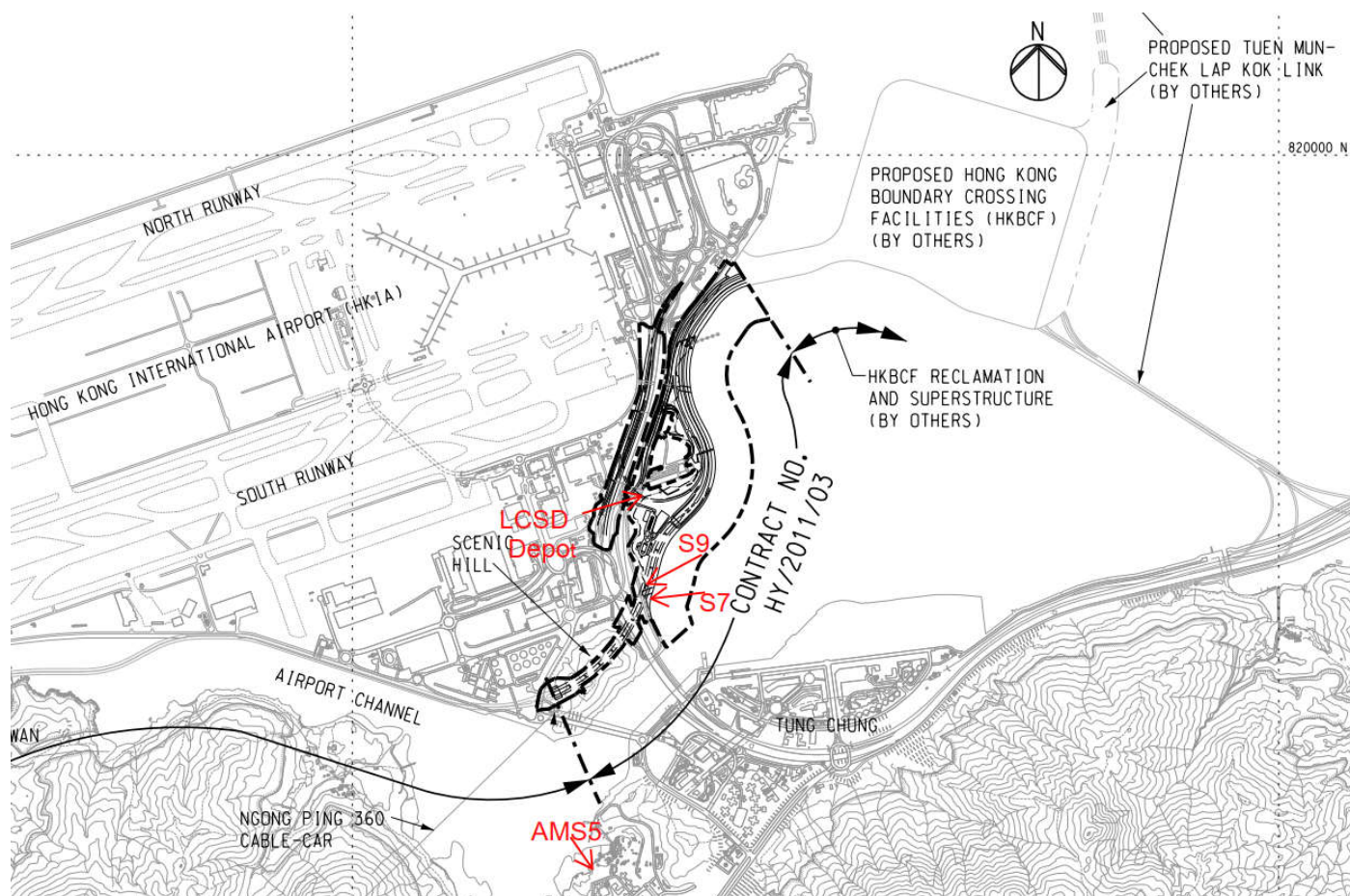
Title : ET Leader



Date : 5 November 2018

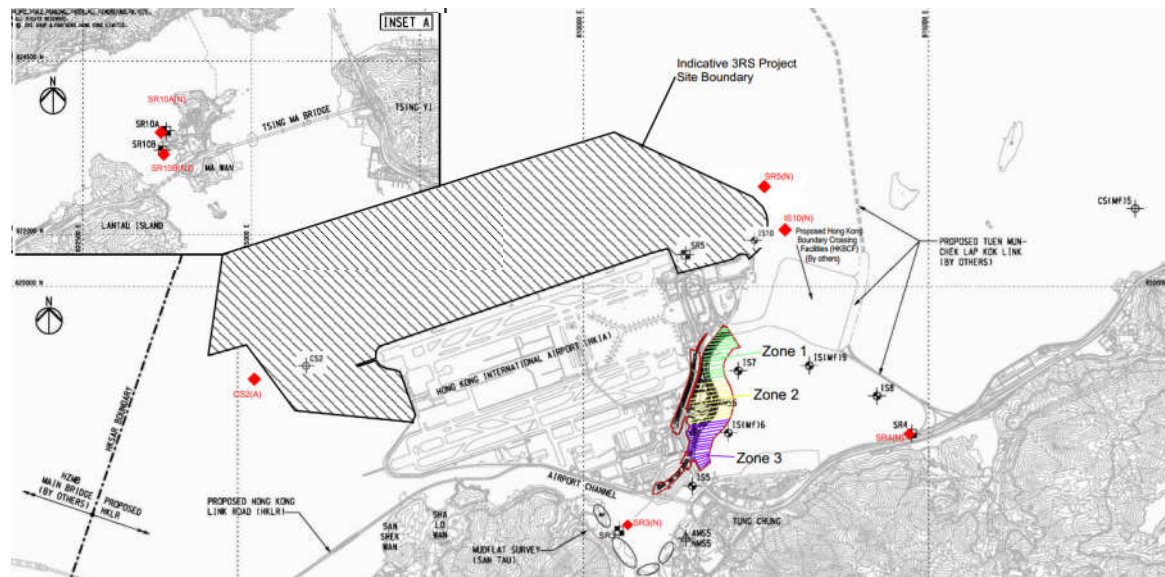
Copied to : Supervising Officer, IEC/ENPO and Contractor

Figure 1 - Location of Construction Site at LCSD Depot, S7 and S9 and Air Monitoring Station AMS5



<div>Contract No. HY/2011/03 - Hong Kong- Zhuhai- Macao Bridge Hong Kong Link Road Section between Scenic Hill and Hong Kong Boundary Crossing Facilities Notifications of Environmental Quality Limits Exceedances</div> <div>Notification No.: 287s ver 0</div>																
Date of Notification: 22 October 2018																
Works Inspected: Data collected from water sampling works on 10 October 2018 and the test report was issued on 19 October 2018.																
Monitoring Location: Water Quality Monitoring Station																
Parameter: <del>Dissolved Oxygen (DO)</del> / Suspended Solid (SS)/ <del>Turbidity (TURB)</del>																
Action & Limit Level (AL & LL) / Measured Level:																
PARAM	STATION	DEPTH	AL (mg/L)	LL (mg/L)	MEASURED AT MID-EBB TIDE (mg/L)	MEASURED AT MID-FLOOD TIDE (mg/L)										
SS	IS10(N)	DA	<div>23.5 and 120% of upstream control station's suspended solids at the same tide of the same day (i.e. CS2(A): 8.95 x 120% = 10.7 for mid ebb; CS(Mf)5: 8.40 x 120% = 10.1 for mid flood)</div>	<div>34.4 and 130% of upstream control station's suspended solids at the same tide of the same day (i.e. CS2(A): 8.95 x 130% = 11.6 for mid ebb; CS(Mf)5: 8.40 x 130% = 10.9 for mid flood)</div>	7.2	25.1										
<div>Notes:</div> <div>1) DA means depth average.</div> <div>2) <b><i>Bold Italic</i></b> means AL exceedances.</div> <div>3) <b><i><u>Bold Italic with underline</u></i></b> means LL exceedances.</div> <div>Possible reasons for Action Level Non-compliance:</div> <div>On 10 October 2018, an Action Level exceedance of suspended solid was recorded at station IS10(N) during mid-flood tide. The exceedance has been investigated and is considered unlikely to be related to the contract works due to the following reasons:</div> <div>1. The ranges of suspended solid at station IS10 during the baseline monitoring are shown as below:</div> <table><tr><td>Station</td><td colspan="2">Range of Suspended Solid (mg/L) Mid-Ebb Tide</td><td colspan="2">Range of Suspended Solid (mg/L) Mid-Flood Tide</td></tr><tr><td>IS10</td><td>6.1</td><td>to 20.2</td><td>7.2</td><td>to 16</td></tr></table> <div>The measured value for mid-flood tide at station IS10(N) was above the range of suspended solid for mid-flood tide during baseline monitoring.</div> <div>2. According to the information provided by the Contractor, land based transportation of rock material at Zone 3 were carried out on 10 October 2018. There was no marine transportation near station IS10(N) during sampling period and no marine works were conducted near station IS10(N) which is located outside the site boundary of HKLR03 Contract.</div> <div>3. Water appearance was observed clear at station IS10(N) and no abnormality or malpractice for the contract works was observed during the sampling exercise.</div> <div>4. There were no specific activities recorded during the monitoring period that would cause any significant impacts on the monitoring results. As such, the exceedance of suspended solid level is considered to be attributed to other external factors such as sea condition, rather than the contract works.</div> <div>Actions taken/ to be taken:</div> <div>As the suspended solid level recorded beyond the water quality criteria was not related to the contract works, no immediate actions are considered necessary. However, the Contractor is reminded to ensure that the silt curtain is fully maintained throughout the construction works and construction works are carried out under stringent supervision to prevent any water quality impacts to the seawater.</div>							Station	Range of Suspended Solid (mg/L) Mid-Ebb Tide		Range of Suspended Solid (mg/L) Mid-Flood Tide		IS10	6.1	to 20.2	7.2	to 16
Station	Range of Suspended Solid (mg/L) Mid-Ebb Tide		Range of Suspended Solid (mg/L) Mid-Flood Tide													
IS10	6.1	to 20.2	7.2	to 16												

## Location Plan:



Reviewed by: Claudine Lee

Title : ET Leader

Date : 5 November 2018

Copied to: Supervising Officer, IEC/ENPO and Contractor

**Summary of Notifications of Summons and Prosecutions**

Total No. of Notifications of Summons / Prosecutions Received	No. of Notifications of Summons / Prosecutions Received during Reporting Period	Status of Notifications of Summons / Prosecutions
0	0	N/A