

SATELLITE REFUSE  
COLLECTION POINT

CBC, CBS BAYS

PUBLIC TOILETS

ADDITIONAL  
RAILING

SECURITY MEASURE AT  
EXISTING GATE

EXISTING GUARD  
BOOTHES TO BE DEMOLISHED

REPROVISION OF  
GUARD BOOTHES

CBC PICK UP BAYS

FRANCHISED BUS  
PICK-UP BAYS

NORTH PUBLIC  
TRANSPORT  
INTERCHANGE

VERTICAL ACCESS  
TO PCB ROOF

VERTICAL ACCESS  
TO PCB ROOF

SOUTH PUBLIC  
TRANSPORT  
INTERCHANGE

INBOUND  
VEHICLE  
CLEARANCE  
PLAZA

DRAINAGE IMPROVEMENT WORKS  
AT VEHICLE INSPECTION PIT

VEHICLE KIOSKS,  
CANOPIES AND  
ASSOCIATED ROAD  
PAVEMENT

OUTBOUND VEHICLE  
CLEARANCE PLAZA

C&D INBOUND CARGO  
EXAMINATION BUILDING

FIRE STATION CUM  
AMBULANCE DEPOT

SLIDING GATE

ACCESS ROAD TO  
GENERATOR AND  
UPS ROOM

GENERATOR AND  
UPS ROOM

LANDSCAPING WORKS AREA

## REMARKS:

- IN SPT1:
  - DEMOLISH 2 NOS. EXISTING GUARD BOOTHS AND RE-PROVISION TO REVISED LOCATIONS AS SHOWN
  - CONSTRUCT COVERED WALKWAYS FOR THE NEW FB AND CBC PICK UP BAYS
  - MODIFY EXISTING DUCTING AND POLES FOR ELV SYSTEM, ROAD LIGHTING AND PILLAR BOXES, AND THE ASSOCIATED CABLING WORKS
  - RELOCATE AND REINSTATE 3 NOS. OF EXISTING BUS OPERATOR OFFICES AND FOOD TRUCK
  - REPLACEMENT OF DRAINPIT COVERS
- IN NPT1:
  - CONSTRUCT COVERED WALKWAYS FOR THE NEW CBC, CBS PICK UP BAYS AND PUBLIC TOILETS
  - PROVIDE AUTOMATIC IRRIGATION SYSTEM AT SLOPES
  - MODIFY EXISTING COVERED WALKWAY AND PROVISION OF LIGHTING
  - REPLACEMENT OF DRAINPIT COVERS
- LANDSCAPING WORKS AREA:
  - CONSTRUCT IRRIGATION SYSTEM WITH 13 NOS. OF NEW WATER POINT AND THE AUTOMATIC IRRIGATION SYSTEM AND PROVIDE MAINTENANCE WORKS
  - LANDSCAPE SOFTWORK, ESTABLISHMENT AND MAINTENANCE WORKS
  - CONSTRUCT RIVER WASHED STONE SWATHE AND MAINTENANCE WORKS
  - PROTECT EXISTING PLANTING AND HARD STRUCTURES
- PASSENGER CLEARANCE BUILDING
  - VERTICAL ACCESS
  - IMPROVEMENT WORKS FOR WATER FEATURE
  - MINOR REMAINING WORKS
  - PROVISION OF NEW CENTRAL AVCSS EQUIPMENT WITH SUFFICIENT CAPACITY, PROCESSING POWER AND STORAGE TO ACCOMMODATE BOTH THE EXISTING AND NEW AVCSS
- VEHICLE KIOSKS AT INBOUND & OUTBOUND VCP
  - PROVISION OF AVCESS AT NEW KIOSKS TO SERVE 24 NOS. VEHICULAR LANES
  - REPLACEMENT OF BARRIER GATE WITH SKIRTING AT 72 NOS. EXISTING KIOSK
- C&D INBOUND CARGO EXAMINATION BUILDING
  - PROVISION OF NEW CENTRAL AVCSS EQUIPMENT WITH SUFFICIENT CAPACITY, PROCESSING POWER AND STORAGE TO ACCOMMODATE BOTH THE EXISTING AND NEW AVCESS

## ABBREVIATION:

SPT1 - SOUTH PUBLIC TRANSPORT INTERCHANGE  
NPT1 - NORTH PUBLIC TRANSPORT INTERCHANGE  
VCP - VEHICLE CLEARANCE PLAZA  
PCB - PASSENGER CLEARANCE BUILDING  
FB - FRANCHISED BUS  
CBC - CROSS BOUNDARY COACH  
CBS - CROSS BOUNDARY SHUTTLE  
ELV - EXTRA LOW VOLTAGE  
AVCSS - AUTOMATIC VEHICLE CLEARANCE SUPPORT SYSTEM

## NOTE:

- THIS DRAWING TO BE READ IN CONJUNCTION WITH DRAWING NOS. 60191048/C9/000/C00/1002

## LEGEND:

	SITE BOUNDARY
	AMENITY AREA
	FOOTPATH
	COVERED WALKWAY
	SECURITY FENCE
	TREE PLANTING
	IRRIGATION POINT

REV.	DESCRIPTION	DATE
1	TENDER DRAWING	JUL 19

	HONG KONG-ZHUAH-MACAO BRIDGE HONG KONG BOUNDARY CROSSING FACILITIES - PHASE 2 AND OTHER WORKS
--	---

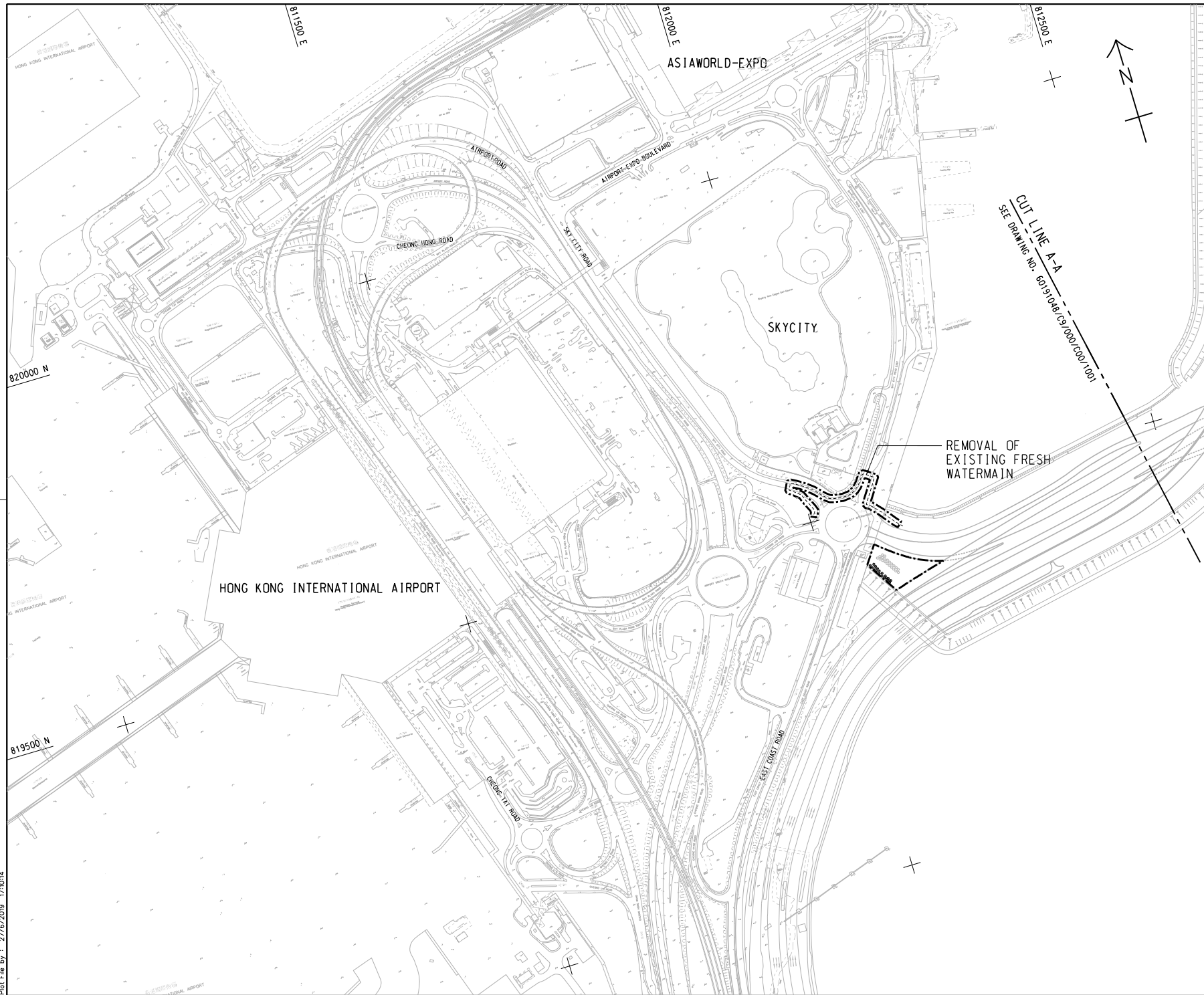
## GENERAL ARRANGEMENT

SHEET 1 OF 2

**AECOM** +  
Rogers Stirk Harbour + Partners  
BURO HAPPOLD ATKINS ADI +

DRGNO. 60191048/C9/000/C00/1001

DESIGNED BY TTHK	CONTRACT NO. HY/2019/01	P. Dir. APPROVED SC1
DRAWN BY JC	STATUS REV	
SCALE A1 1 : 2500	DRAWING ARE IN METRES	© COPYRIGHT RESERVED 圖 樣 所 有



**NOTE:**

1. THIS DRAWING TO BE READ IN CONJUNCTION WITH DRAWING NOS. 60191048/C9/000/C00/1001.

NO.	DESCRIPTION	DATE
1	TENDER DRAWING	JUL 19

**HIGHWAYS DEPARTMENT**  
Major Works Project Management Office (Special Duties)

**HONG KONG-ZHUHAI-MACAO BRIDGE**  
HONG KONG BOUNDARY CROSSING FACILITIES  
- PHASE 2 AND OTHER WORKS

**GENERAL ARRANGEMENT**

SHEET 2 OF 2

**AECOM** **Aedas**

Rogers Stirk Harbour + Partners  
BURO HAPPOLD ATKINS ADI

DRG. NO. 60191048/C9/000/C00/1002

DESIGNED BY TTHK	CONTRACT NO. HY/2019/01	P. Dir. APPROVED SC1
CHECKED BY JC	STATUS REV	
SCALE A1 1 : 2500		
DRAWING AND IN METRES	© COPYRIGHT RESERVED	