

NOTES:

1. COORDINATES ARE RELATED TO HONG KONG METRIC GRID (1980).
2. DIMENSIONS ARE IN MILLIMETER AND CHAINAGE ARE IN METRES UNLESS OTHERWISE SHOWN.

LEGEND:

- SITE BOUNDARY
- WORKS AREA

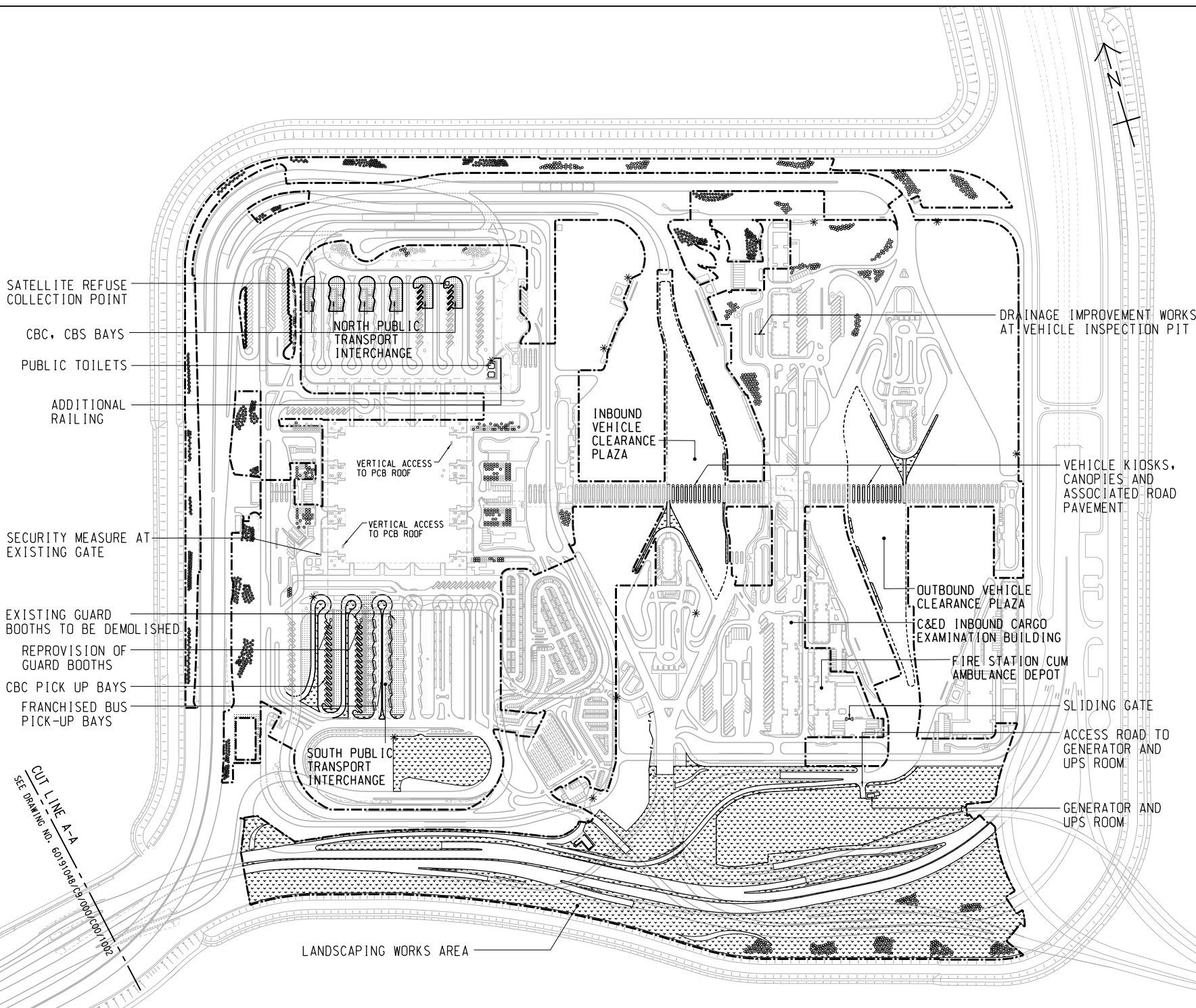
NO.	DESCRIPTION	DATE
-	TENDER DRAWING	11/01/00
REV.	DESCRIPTION	DATE
001	ISSUED FOR TENDER	11/01/00



HONG KONG-ZHUHAI-MACAO BRIDGE  
HONG KONG BOUNDARY CROSSING FACILITIES  
- PHASE 2 AND OTHER WORKS

SITE LOCATION PLAN

<b>AECOM</b>		<b>Aedas</b>	
Rogers Stirk Harbour + Partners		BURO HAPPOLD ATKINS ADI	
DRG.NO. 60191048/C9/000/C00/1000			
DESIGNED BY	CHKD BY	DATE	APPROVED
TTHK	HY/2019/01	11/01/01	SC1
DRAWN BY	STATUS		
JC	REV		
SCALE	A1 1 : 25000		
DIMENSIONS ARE IN METRES		© COPYRIGHT RESERVED	



- REMARKS:**
- IN SPT1:
    - DEMOLISH 2 NOS. EXISTING GUARD BOOTHS AND RE-PROVISION TO REVISED LOCATIONS AS SHOWN
    - CONSTRUCT COVERED WALKWAYS FOR THE NEW FB AND CBC PICK UP BAYS
    - MODIFY EXISTING DUCTING AND POLES FOR ELV SYSTEM, ROAD LIGHTING AND PILLAR BOXES, AND THE ASSOCIATED CABLING WORKS
    - RELOCATE AND REINSTATE 3 NOS. OF EXISTING BUS OPERATOR OFFICES AND FOOD TRUCK
    - REPLACEMENT OF DRAINPIT COVERS
  - IN NPT1:
    - CONSTRUCT COVERED WALKWAYS FOR THE NEW CBC, CBS PICK UP BAYS AND PUBLIC TOILETS
    - PROVIDE AUTOMATIC IRRIGATION SYSTEM AT SLOPES
    - MODIFY EXISTING COVERED WALKWAY AND PROVISION OF LIGHTING
    - REPLACEMENT OF DRAINPIT COVERS
  - LANDSCAPING WORKS AREA:
    - CONSTRUCT IRRIGATION SYSTEM WITH 13 NOS. OF NEW WATER POINT AND THE AUTOMATIC IRRIGATION SYSTEM AND PROVIDE MAINTENANCE WORKS
    - LANDSCAPE SOFTWORK, ESTABLISHMENT AND MAINTENANCE WORKS
    - CONSTRUCT RIVER WASHED STONE SWATHE AND MAINTENANCE WORKS
    - PROTECT EXISTING PLANTING AND HARD STRUCTURES
  - PASSENGER CLEARANCE BUILDING
    - VERTICAL ACCESS
    - IMPROVEMENT WORKS FOR WATER FEATURE
    - MINOR REMAINING WORKS
    - PROVISION OF NEW CENTRAL AVCSS EQUIPMENT WITH SUFFICIENT CAPACITY, PROCESSING POWER AND STORAGE TO ACCOMMODATE BOTH THE EXISTING AND NEW AVCSS
  - VEHICLE KIOSKS AT INBOUND & OUTBOUND VCP
    - PROVISION OF AVCESS AT NEW KIOSKS TO SERVE 24 NOS. VEHICULAR LANES
    - REPLACEMENT OF BARRIER GATE WITH SKIRTING AT 72 NOS. EXISTING KIOSK
  - C&D INBOUND CARGO EXAMINATION BUILDING
    - PROVISION OF NEW CENTRAL AVCSS EQUIPMENT WITH SUFFICIENT CAPACITY, PROCESSING POWER AND STORAGE TO ACCOMMODATE BOTH THE EXISTING AND NEW AVCESS

**ABBREVIATION:**

SPT1 - SOUTH PUBLIC TRANSPORT INTERCHANGE  
NPT1 - NORTH PUBLIC TRANSPORT INTERCHANGE  
VCP - VEHICLE CLEARANCE PLAZA  
PCB - PASSENGER CLEARANCE BUILDING  
FB - FRANCHISED BUS  
CBC - CROSS BOUNDARY COACH  
CBS - CROSS BOUNDARY SHUTTLE  
ELV - EXTRA LOW VOLTAGE  
AVCSS - AUTOMATIC VEHICLE CLEARANCE SUPPORT SYSTEM

**NOTE:**

1. THIS DRAWING TO BE READ IN CONJUNCTION WITH DRAWING NOS. 60191048/C9/000/C00/1002

**LEGEND:**

[Symbol]	SITE BOUNDARY
[Symbol]	AMENITY AREA
[Symbol]	FOOTPATH
[Symbol]	COVERED WALKWAY
[Symbol]	SECURITY FENCE
[Symbol]	TREE PLANTING
[Symbol]	IRRIGATION POINT

REV.	DESCRIPTION	DATE
1	TENDER DRAWING	JUL 19

香港公路局  
主務工程管理局 (專業車務)  
Major Works Project Management Office (Special Duties)

HONG KONG-ZHUHAI-MACAO BRIDGE  
HONG KONG BOUNDARY CROSSING FACILITIES  
- PHASE 2 AND OTHER WORKS

**GENERAL ARRANGEMENT**

SHEET 1 OF 2

**AECOM**  
Rogers Stirk Harbour + Partners  
BURO HAPPOLD ATKINS ADI

**Aedas**

DRGNO. 60191048/C9/000/C00/1001  
圖紙編號

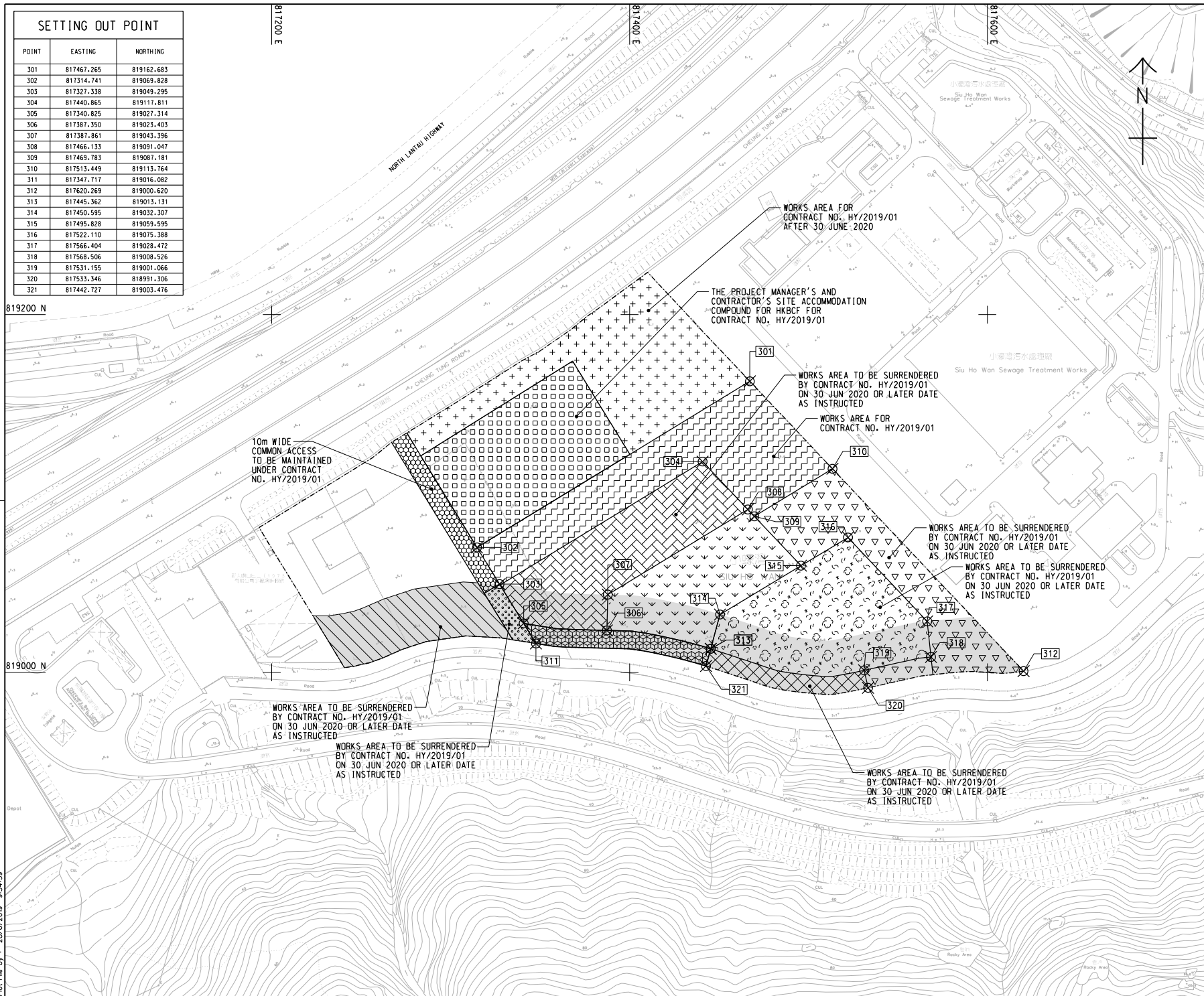
DESIGNED BY TTHK	CONTRACT NO. HY/2019/01	P. Dir. APPROVED
CHECKED BY JC	STATUS	SCALE
SCALE A1 1 : 2500	DATE	DATE
DRAWING AND IN	DATE	DATE

© COPYRIGHT RESERVED

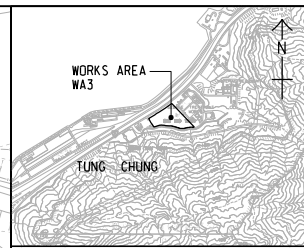
Plot File by : 08/07/2019 8:46:57

CUT LINE A-A  
SEE DRAWING NO. 60191048/C9/000/C00/1002





SETTING OUT POINT		
POINT	EASTING	NORTHING
301	817467.265	819162.683
302	817314.741	819069.828
303	817327.338	819049.295
304	817440.865	819117.811
305	817340.825	819027.314
306	817387.350	819023.403
307	817387.861	819043.396
308	817466.133	819091.047
309	817469.783	819087.181
310	817513.449	819113.764
311	817347.717	819016.082
312	817620.269	819000.620
313	817445.362	819013.131
314	817450.595	819032.307
315	817495.828	819059.595
316	817522.110	819075.388
317	817566.404	819028.472
318	817568.506	819008.526
319	817531.155	819001.066
320	817533.346	818991.306
321	817442.727	819003.476



LOCATION PLAN  
SCALE 1 : 25000

- NOTES:
- COORDINATES ARE RELATED TO HONG KONG METRIC GRID (1980).
  - DIMENSIONS ARE IN MILLIMETER AND CHAINAGE ARE IN METRES UNLESS OTHERWISE SHOWN.

LEGEND:

---	WORKS AREA BOUNDARY
[Pattern]	PORTION 3.1
[Pattern]	PORTION 3.2
[Pattern]	PORTION 3.3
[Pattern]	PORTION 3.4
[Pattern]	PORTION 3.5
[Pattern]	PORTION 3.6
[Pattern]	PORTION 3.7
[Pattern]	PORTION 3.8
[Pattern]	PORTION 3.9
[Pattern]	PORTION 3.10
[Pattern]	PORTION 3.11
[Pattern]	PORTION 3.12
[Pattern]	NON-BUILDING AREA 8200m <sup>2</sup> (WHOLE)

TENDER DRAWING		TTHK	BCC	JUL 19
REV.	DESCRIPTION	BY	CHKD	DATE
1	ISSUED FOR TENDER	TTHK	BCC	19 JUL
HONG KONG HIGHWAYS DEPARTMENT Major Works Project Management Office (Special Duties)				
HONG KONG-ZHUAHAI-MACAO BRIDGE PHASE 2 AND OTHER WORKS				

WORKS AREA WA3

**AECOM** + **Aedas**  
Rogers Stirk Harbour + Partners  
BURO HAPPOLD ATKINS ADI +

DRGNO. 60191048/C9/000/C00/1051

DESIGNED BY TTHK	CONTRACT NO. HY/2019/01	P. Dir. APPROVED B&A
SCALE A1 1 : 1000	STATUS REV	
DRAWING ARE IN METRES		

© COPYRIGHT RESERVED  
圖 樣 所 有

Plot File by : 28/6/2019 9:34:39