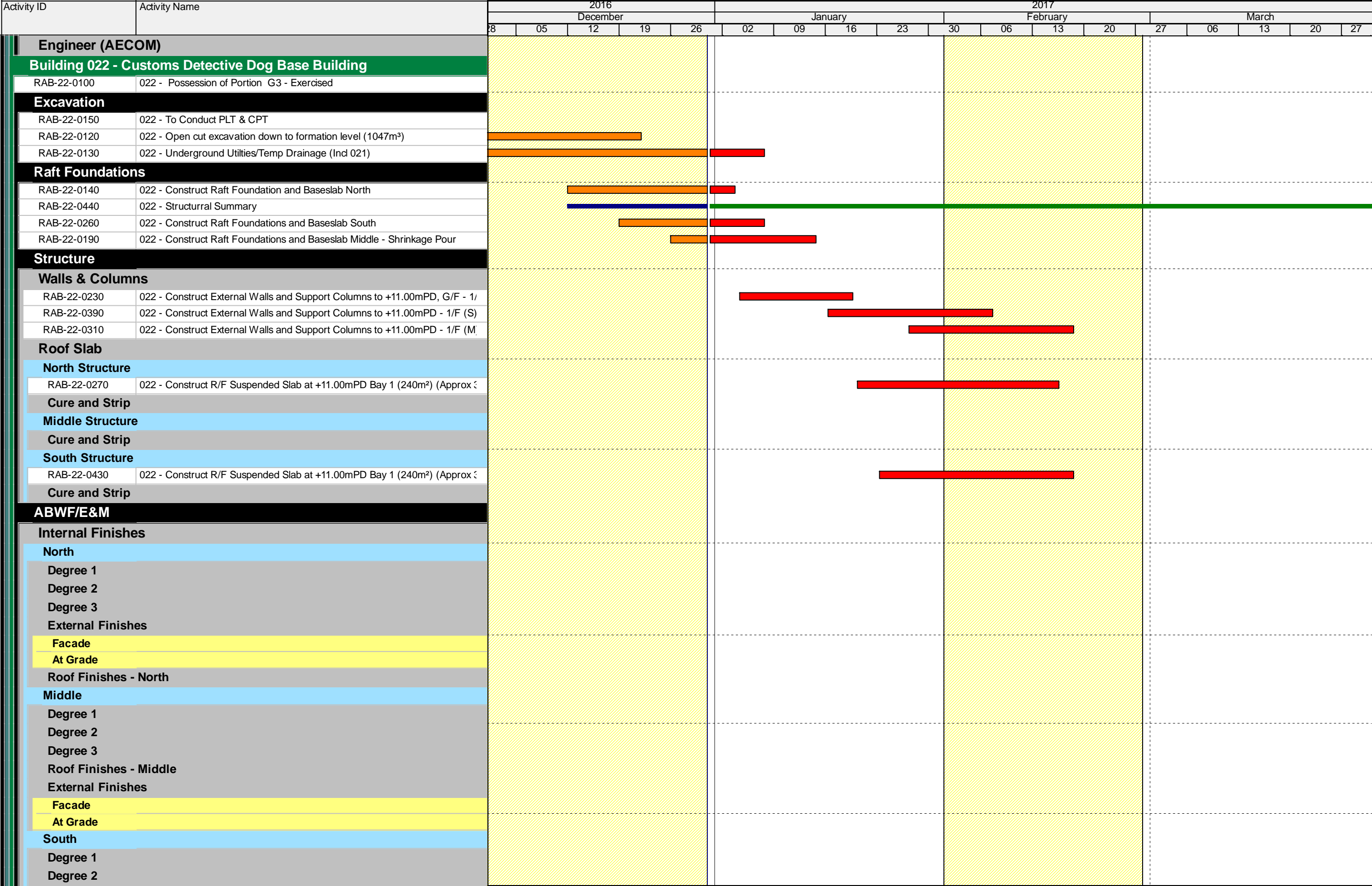
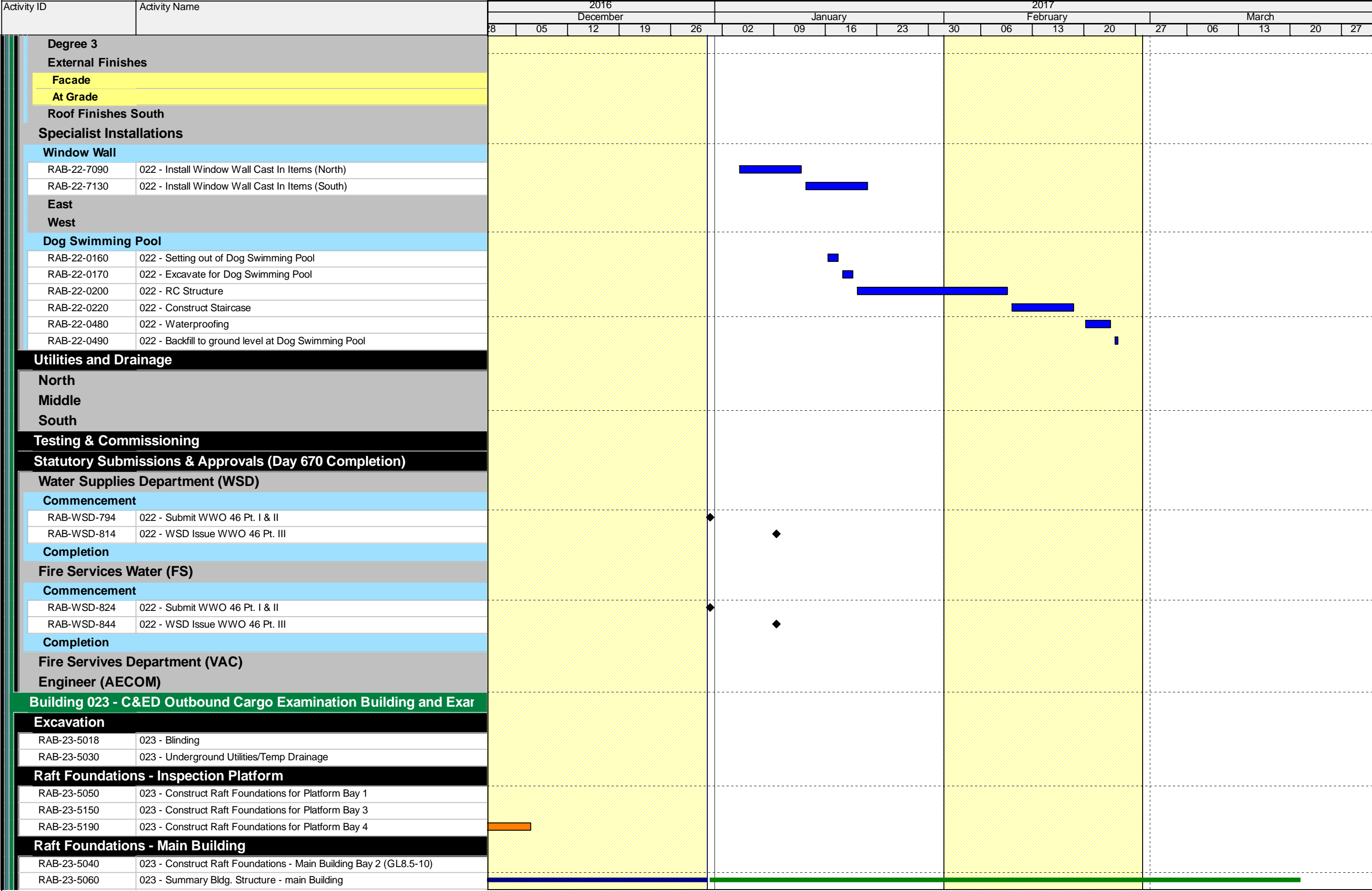


Activity ID		Activity Name		2016					2017					2018										
		December					January					February					March							
		28	05	12	19	26	02	09	16	23	30	06	13	20	27	06	13	20	27					
<div>HY/2014/05 HKZMB HKBCF - 31 DEC. 2016, WORKS F</div> <div>WORKING PROGRAMME SUMMARY</div> <div>GENERAL/PRELIMINARIES</div> <div>DESIGN AND ENGINEERING</div> <div>PROCUREMENT, MANUFACTURING & DELIVERIES</div> <div>CONSTRUCTION</div>																								
Building 021 - C&ED Dangerous Goods Store																								
RAB-21-0100		021 - Possession of Portion G2 - Exercised																						
Raft																								
RAB-21-8155		021 - Plate Load Test & Cone Penetration Test.																						
RAB-21-8135		021 - Open cut excavation down to formation level (1047m³)																						
RAB-21-0120		021 - Construct Raft Foundations and Base Slab																						
RAB-21-8145		021 - Underground Utilities/Temp Drainage																						
Structure																								
RAB-21-0240		021 - Structural Summary																						
RAB-21-2230		021 - Construct External Wall & Columns to +11mPD																						
RAB-21-0140		021 - Construct Supporting Columns to +11mPD GL3-4																						
RAB-21-2240		021 - Construct External Wall to +11mPD GL1-2																						
RAB-21-2250		021 - Construct External Wall to +11mPD GL2-3																						
RAB-21-2260		021 - Construct Supporting Columns to +11mPD GL1-2																						
RAB-21-0150		021 - Construct Roof Suspended Slab up to +11.00mPD																						
RAB-21-0160		021 - Curing and Stripping False/formwork																						
ABWF/E&M																								
Internal Finishes																								
Degree 1																								
RAB-21-2220		021 - Construct Blockwork Walls (84m²)																						
RAB-21-2280		021 - Screeding																						
RAB-21-2290		021 - Sub-Frame																						
Degree 2																								
Degree 3																								
External Finishes																								
Facade																								
At Grade																								
Roof Finishes																								
RAB-21-0170		021 - Erect External Scaffolding																						
RAB-21-0180		021 - Leveling screed - (110m²)																						
Utilities and Drainage																								
Testing & Commissioning																								
Statutory Submissions & Approvals (Day 670 Completion)																								
Dangerous Goods Licence																								
Fire Servives Department (FS)																								
Fire Servives Department (VAC)																								





Activity ID	Activity Name	2016					2017														
		December					January					February					March				
		28	05	12	19	26	02	09	16	23	30	06	13	20	27	06	13	20	27		
	RAB-23-5100	023 - Construct Lift Pit for L-01 (GL5-6)																			
	RAB-23-5240	023 - Construct Raft Foundations for Main Building Bay 5 (GL4-8.5)																			
	RAB-23-5140	023 - Construct Raft Foundations for Main Building Bay 6 (GL1-4)																			
Structure																					
Ground Floor																					
Planters																					
Supporting Walls and Columns to +12.85mPD																					
	RAB-23-5110	023 - Construct External Walls to +12.85mPD Bay 2 (GL8.5-10)																			
	RAB-23-5300	023 - Construct External Walls to +12.85mPD Bay 5 (GL4-8.5)																			
	RAB-23-5390	023 - Construct External Walls to +12.85mPD Bay 6 (GL1-4)																			
	RAB-23-2180	023 - Install FS and SPR RC Water Tanks (G/F North)																			
First Floor																					
	RAB-23-5200	023 - Construct 1/F Suspended Slab +12.85mPD Bay 2 (GL8.5-10)																			
	RAB-23-5320	023 - Construct 1/F Suspended Slab +12.85mPD Bay 5 (GL4-8.5)																			
	RAB-23-5350	023 - Construct 1/F Suspended Slab +12.85mPD Bay 6 (GL1-4)																			
Cure and Strip																					
	RAB-23-5230	023 - Cure and Strip False/Formwork +12.85mPD Bay 2 (GL8.5-10), G/F - 1/F																			
	RAB-23-5400	023 - Cure and Strip False/Formwork +12.85mPD Bay 5 (GL4-8.5), G/F - 1/F																			
	RAB-23-5510	023 - Cure and Strip False/Formwork +12.85mPD Bay 6 (GL1-4), G/F - 1/F																			
Supporting Walls and Columns to +17.1mPD																					
	RAB-23-5280	023 - Construct External Walls to +17.1mPD Bay 2 (GL8.5-10)																			
	RAB-23-5440	023 - Construct External Walls to +17.1mPD Bay 5 (GL4-8.5)																			
	RAB-23-5580	023 - Construct External Walls to +17.1mPD Bay 6 (GL1-4)																			
Roof																					
	RAB-23-5330	023 - Construct R/F Suspended Slab +17.1mPD Bay 2 (GL8.5-10)																			
Cure and Strip																					
Supporting Walls and Columns to +19.1mPD																					
Lift Doghouse																					
Cure and Strip																					
ABWF/E&M																					
North																					
Internal Finishes - North																					
Ground Floor - North																					
Degree 1 - North																					
Degree 2 - North																					
Degree 3 - North																					
First Floor - North																					
Degree 1 - North																					
Degree 2 - North																					
Degree 3 - North																					
Early Handover Rooms With Interface for KD3D & KD3E)																					
Ground Floor, Rm. 25, 26, 58 & 59 (FM200 & NER)																					
Degree 1																					
Degree 2																					
Degree 3																					
First Floor, Rm. 34 & 35 (FM200 & NER)																					
Degree 1																					
Degree 2																					

Activity ID		Activity Name	2016					2017				2017				2017					
			December					January				February				March					
			28	05	12	19	26	02	09	16	23	30	06	13	20	27	06	13	20	27	
C8 - 3 MONTH ROLLING PROGRAMME, 01 DEC-16 UPDATE	Degree 3																				
	External Finishes - North																				
	Facade																				
	At Grade																				
	Roof Finishes																				
	Green Roof																				
	South																				
	Internal Finishes - South																				
	Ground Floor - South																				
	Degree 1 - South																				
	Degree 2 - South																				
	Degree 3 - South																				
	First Floor - South																				
	Degree 1 - South																				
	Degree 2 - South																				
	Degree 3 - South																				
	External Finishes - South																				
	Facade																				
	At Grade																				
	Window Wall																				
	RAB-23-7100		023 - Install Window Wall Cast In Items in Base Slab - S																		
	RAB-23-7140		023 - Install Window Wall Cast In Items in 1/F Slab - S																		
	East																				
	West																				
	Roof Finishes																				
	Roof Level Dog House																				
	Building 023																				
	Specialist Installations																				
	Metal Canopy																				
	Utilities and Drainage																				
	Testing & Commissioning																				
	Statutory Submissions & Approvals (Day 610 Completion)																				
EMSD - Building 023 Lift Inspection																					
Water Supplies Department (WSD)																					
Commencement																					
RAB-WSD-764		023 - Submit WWO 46 Pt. I & II for Building 023																			
RAB-WSD-854		023 - Submit WWO 46 Pt. III																			
Completion																					
Fire Services Department (FSD)																					
Commencement																					
RAB-WSD-864		023 - Submit WWO 46 Pt. I & II for Building 023																			
RAB-WSD-874		023 - Submit WWO 46 Pt. III																			
Completion																					
Fire Servives Department (VAC)																					
Engineer (AECOM)																					
Building 025 - Inbound Private Car Annexure																					
Excavation																					

Remaining Level of Effort

Actual Level of Effort

Actual Work

Remaining Work

C8 - 3 MONTH ROLLING PROGRAMME, 01 DEC-16 UPDATE

Page 5 of 18

Date

01-Dec-16

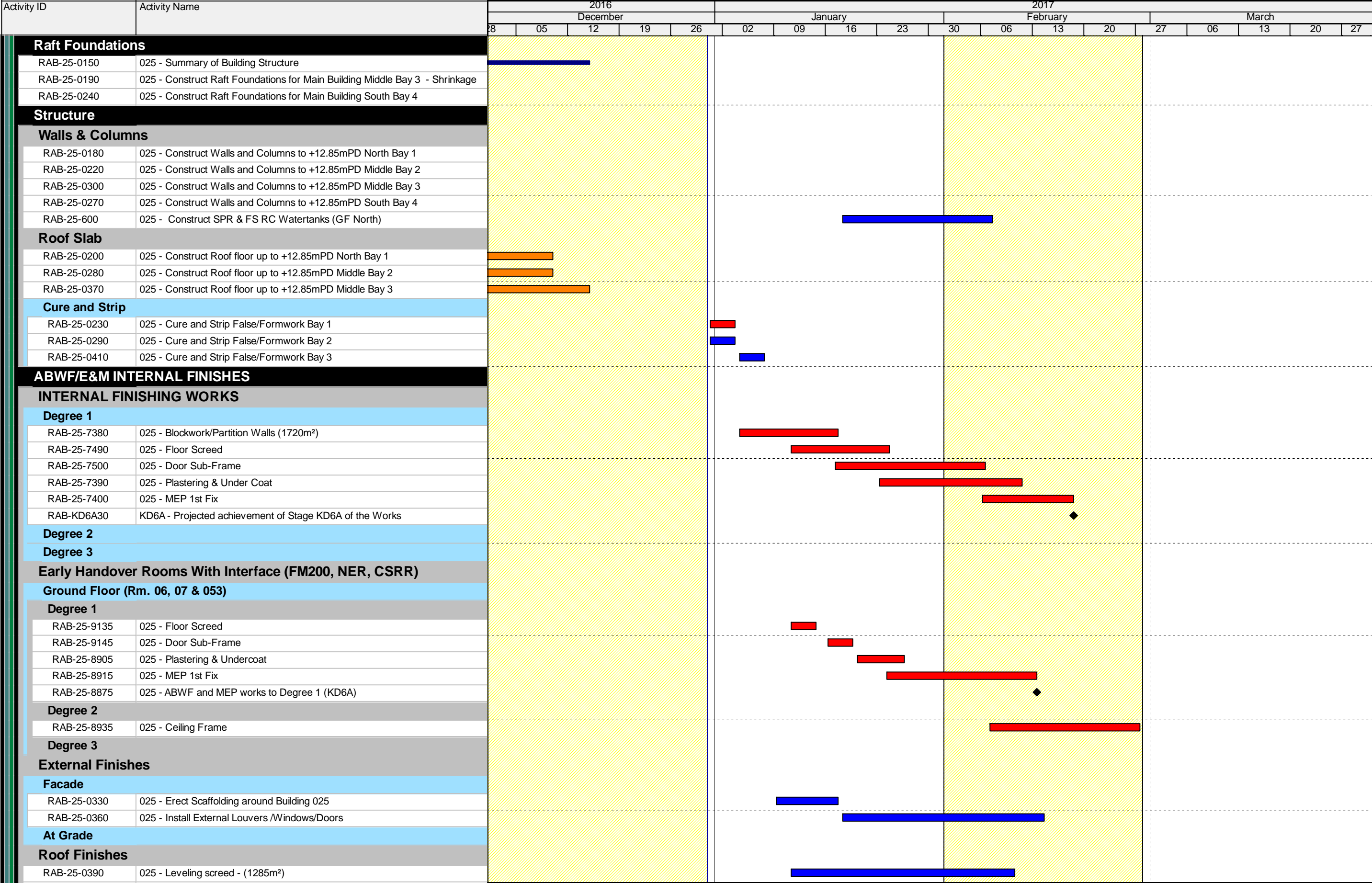
Revision

Working Programme with RAB3 Baseline

Checked

SGJ

Appro...



Activity ID		Activity Name		2016					2017				2017				2017					
				December					January				February				March					
				28	05	12	19	26	02	09	16	23	30	06	13	20	27	06	13	20	27	
<div></div>	Green Roof Specialist Installations																					
	Glazed Canopy																					
	IMMD Kiosk																					
	RAB-25-0250	025 - Construct Kiosk Baseslab and Walls																				
	RAB-25-0320	025 - Construct Kiosk Roof Structure																				
	RAB-25-0380	025 - Internal ABWF and MEP of IMMD Kiosk																				
	RAB-25-0350	025 - External Finishes to IMMD Kiosk																				
	Utilities and Drainage																					
	Testing & Commissioning																					
	Statutory Submissions & Approvals (Day 670 Completion)																					
	Water Supplies Department (WSD)																					
	Commencement																					
	RAB-WSD-734	025 - Submit WWO 46 Pt. I & II																				
	RAB-WSD-884	025 - Submit WWO 46 Pt. III																				
	Completion																					
	Fire Service Water (FS)																					
	Commencement																					
	RAB-WSD-914	025 - Submit WWO 46 Pt. I & II																				
	RAB-WSD-924	025 - Submit WWO 46 Pt. III																				
	Completion																					
	Fire Servives Department (VAC)																					
	Engineer (AECOM)																					
	Building 032 - Outbound Private Car Annexure																					
	Excavation																					
	RAB-32-0120	032 - Open cut excavation down to formation level (2831m³)																				
RAB-32-0130	032 - Underground Utilites and Temp Drainage Works																					
Raft Foundations																						
RAB-32-0140	032 - Construct Raft Foundations for Main Building North Bay 1 (321m²)																					
RAB-32-0150	032 - Summary Building Structure																					
RAB-32-0160	032 - Construct Raft Foundations for Main Building Middle Bay 2 (321m²)																					
RAB-32-0240	032 - Construct Raft Foundations for Main Building South Bay 4 (321m²)																					
RAB-32-0190	032 - Construct Raft Foundations for Main Building Middle Bay 5 (321m²)																					
Structure																						
Walls & Columns																						
RAB-32-0180	032 - Construct Walls and Columns to +12.65mPD North Bay 1																					
RAB-32-0220	032 - Construct Walls and Columns to +12.65mPD Middle Bay 2																					
RAB-32-0270	032 - Construct Walls and Columns to +12.65mPD South Bay 4																					
RAB-32-0300	032 - Construct Walls and Columns to +12.65mPD Middle Bay 5																					
Roof Slab																						
RAB-32-0200	032 - Construct Roof floor upto +12.65mPD North Bay 1 (321m²) (Approx 48																					
RAB-32-0280	032 - Construct Roof floor upto +12.65mPD Middle Bay 2 (321m²) (Approx 48																					
RAB-32-0370	032 - Construct Roof floor upto +12.65mPD South Bay 4 (321m²) (Approx 48																					
RAB-32-0310	032 - Construct Roof floor upto +12.65mPD Middle Bay 3 (321m²) (Approx 48																					
Cure and Strip																						
RAB-32-0230	032 - Cure and Strip False/Formwork Bay 1																					
RAB-32-0290	032 - Cure and Strip False/Formwork Bay 2																					
RAB-32-0410	032 - Cure and Strip False/Formwork Bay 4																					

Remaining Level of Effort

Actual Work

Actual Level of Effort

Remaining Work

C8 - 3 MONTH ROLLING PROGRAMME, 01 DEC-16 UPDATE

Page 7 of 18

Date

01-Dec-16

Revision

Working Programme with RAB3 Baseline

Checked

SGJ

Appro...

Activity ID		Activity Name	2016					2017				2017				2017				
			December					January				February				March				
			28	05	12	19	26	02	09	16	23	30	06	13	20	27	06	13	20	27
RAB-32-0340		032 - Cure and Strip False/Formwork Bay 5																		
ABWF/E&M																				
Internal Finishes																				
Degree 1																				
Degree 2																				
Degree 3																				
Early Handover Rooms With Interface (FM200, NER, CSRR)																				
Ground Floor (Rm. 26, 28 & 29)																				
Degree 1																				
Degree 2																				
Degree 3																				
Roof Finishes																				
Green Roof																				
External Finishes																				
Facade																				
RAB-32-0330		032 - Erect Scaffolding around Building 032																		
At Grade																				
Specialist Installations																				
IMMD Kiosk																				
RAB-32-0250		032 - Construct Kiosk Baseslab and Walls																		
Glazed Canopy																				
Utilities and Drainage																				
Testing & Commissioning																				
Statutory Submissions & Approvals (Day 670 Completion)																				
Water Supplies Department (WSD)																				
Commencement																				
RAB-WSD-704		032 - Submit WWO 46 Pt. I & II																		
RAB-WSD-904		032 - Submit WWO 46 Pt. III																		
Completion																				
Fire Water Service (FS)																				
Commencement																				
RAB-WSD-934		032 - Submit WWO 46 Pt. I & II, FS																		
RAB-WSD-944		032 - Submit WWO 46 Pt. III, FS																		
Completion																				
Fire Servives Department (HVAC)																				
Engineer (AECOM)																				
Building 044 - E&M Maintenance Building																				
RAB-44-1160		044 - Building Structure Summary																		
Excavation																				
RAB-44-0120		044 - Open cut excavation down to formation level (Incl 045) (2600m³)																		
RAB-44-0130		044 - Underground Utilities/Temp Drainage (Incl 045)																		
Raft																				
RAB-44-1145		044 - Construct lift pit for L-01																		
RAB-44-0140		044 - Construct Raft Foundations for Main Building Bay 1 (North)(242m²)																		
RAB-44-0160		044 - Construct Raft Foundations for Main Building Bay 2 (South)(242m²)																		
Structure																				

Remaining Level of Effort

Actual Level of Effort

Actual Work

Remaining Work

C8 - 3 MONTH ROLLING PROGRAMME, 01 DEC-16 UPDATE

Page 8 of 18

Date

01-Dec-16

Revision

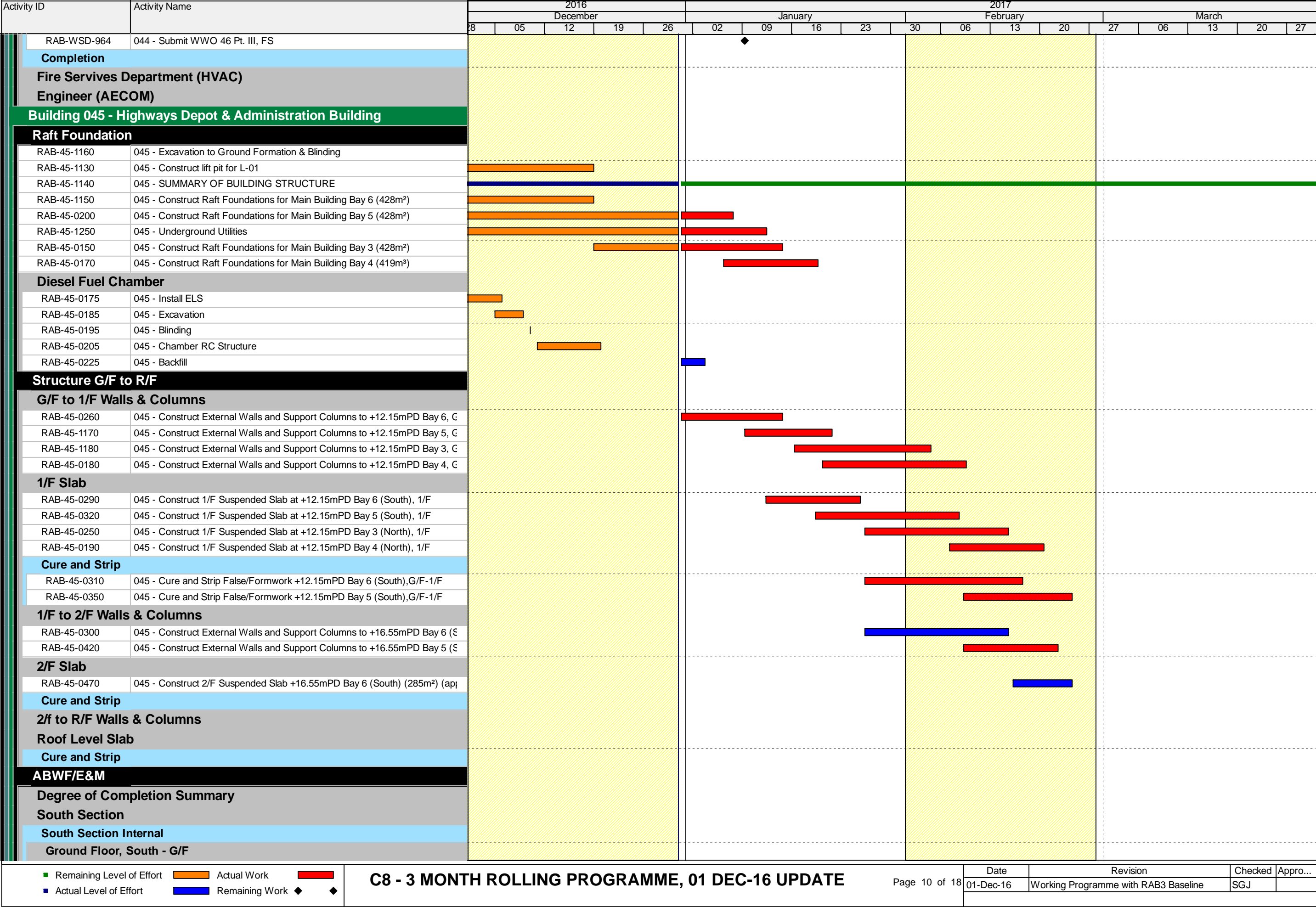
Working Programme with RAB3 Baseline

Checked

SGJ

Appro...

Activity ID	Activity Name	2016					2017														
		December					January					February					March				
		28	05	12	19	26	02	09	16	23	30	06	13	20	27	06	13	20	27		
<div><div></div><div></div><div></div><div></div><div></div><div></div><div></div><div></div><div></div><div></div><div></div><div></div><div></div><div></div><div></div><div></div><div></div><div></div><div></div><div></div><div></div><div></div><div></div><div></div><div></div><div></div><div></div><div></div><div></div><div></div><div></div><div></div><div></div><div></div><div></div><div></div><div></div><div></div><div></div><div></div><div></div><div></div><div></div><div></div><div></div><div></div><div></div><div></div><div></div><div></div><div></div><div></div><div></div><div></div><div></div><div></div><div></div><div></div><div></div><div></div><div></div><div></div><div></div><div></div><div></div><div></div><div></div><div></div><div></div><div></div><div></div><div></div><div></div><div></div><div></div><div></div><div></div><div></div><div></div><div></div><div></div><div></div><div></div><div></div><div></div><div></div><div></div><div></div><div></div><div></div><div></div><div></div><div></div><div></div><div></div><div></div><div></div><div></div><div></div><div></div><div></div><div></div><div></div><div></div><div></div><div></div><div></div><div></div><div></div><div></div><div></div><div></div><div></div><div></div><div></div><div></div><div></div><div></div><div></div><div></div><div></div><div></div><div></div><div></div><div></div><div></div><div></div><div></div><div></div><div></div><div></div><div></div><div></div><div></div><div></div><div></div><div></div><div></div><div></div><div></div><div></div><div></div><div></div><div></div><div></div><div></div><div></div><div></div><div></div><div></div><div></div><div></div><div></div><div></div><div></div><div></div><div></div><div></div><div></div><div></div><div></div><div></div><div></div><div></div><div></div><div></div><div></div><div></div><div></div><div></div><div></div><div></div><div></div><div></div><div></div><div></div><div></div><div></div><div></div><div></div><div></div><div></div><div></div><div></div><div></div><div></div><div></div><div></div><div></div><div></div><div></div><div></div><div></div><div></div><div></div><div></div><div></div><div></div><div></div><div></div><div></div><div></div><div></div><div></div><div></div><div></div><div></div><div></div><div></div><div></div><div></div><div></div><div></div><div></div><div></div><div></div><div></div><div></div><div></div><div></div><div></div><div></div><div></div><div></div><div></div><div></div><div></div><div></div><div></div><div></div><div></div><div></div><div></div><div></div><div></div><div></div><div></div><div></div><div></div><div></div><div></div><div></div><div></div><div></div><div></div><div></div><div></div><div></div><div></div><div></div><div></div><div></div><div></div><div></div><div></div><div></div><div></div><div></div><div></div><div></div><div></div><div></div><div></div><div></div><div></div><div></div><div></div><div></div><div></div><div></div><div></div><div></div><div></div><div></div><div></div><div></div><div></div><div></div><div></div><div></div><div></div><div></div><div></div><div></div><div></div><div></div><div></div><div></div><div></div><div></div><div></div><div></div><div></div><div></div><div></div><div></div><div></div><div></div><div></div><div></div><div></div><div></div><div></div><div></div><div></div><div></div><div></div><div></div><div></div><div></div><div></div><div></div><div></div><div></div><div></div><div></div><div></div><div></div><div></div><div></div><div></div><div></div><div></div><div></div><div></div><div></div><div></div><div></div><div></div><div></div><div></div><div></div><div></div><div></div><div></div><div></div><div></div><div></div><div></div><div></div><div></div><div></div><div></div><div></div><div></div><div></div><div></div><div></div><div></div><div></div><div></div><div></div><div></div><div></div><div></div><div></div><div></div><div></div><div></div><div></div><div></div><div></div><div></div><div></div><div></div><div></div><div></div><div></div><div></div><div></div><div></div><div></div><div></div><div></div><div></div><div></div><div></div><div></div><div></div><div></div><div></div><div></div><div></div><div></div><div></div><div></div><div></div><div></div><div></div><div></div><div></div><div></div><div></div><div></div><div></div><div></div><div></div><div></div><div></div><div></div><div></div><div></div><div></div><div></div><div></div><div></div><div></div><div></div><div></div><div></div><div></div><div></div><div></div><div></div><div></div><div></div><div></div><div></div><div></div><div></div><div></div><div></div><div></div><div></div><div></div><div></div><div></div><div></div><div></div><div></div><div></div><div></div><div></div><div></div><div></div><div></div><div></div><div></div><div></div><div></div><div></div><div></div><div></div><div></div><div></div><div></div><div></div><div></div><div></div><div></div><div></div><div></div><div></div><div></div><div></div><div></div><div></div><div></div><div></div><div></div><div></div><div></div><div></div><div></div><div></div><div></div><div></div><div></div><div></div><div></div><div></div><div></div><div></div><div></div><div></div><div></div><div></div><div></div><div></div><div></div><div></div><div></div><div></div><div></div><div></div><div></div><div></div><div></div><div></div><div></div><div></div><div></div><div></div><div></div><div></div><div></div><div></div><div></div><div></div><div></div><div></div><div></div><div></div><div></div><div></div><div></div><div></div><div></div><div></div><div></div><div></div><div></div><div></div><div></div><div></div><div></div><div></div><div></div><div></div><div></div><div></div><div></div><div></div><div></div><div></div><div></div><div></div><div></div><div></div><div></div><div></div><div></div><div></div><div></div><div></div><div></div><div></div><div></div><div></div><div></div><div></div><div></div><div></div><div></div><div></div><div></div><div></div><div></div><div></div><div></div><div></div><div></div><div></div><div></div><div></div><div></div><div></div><div></div><div></div><div></div><div></div><div></div><div></div><div></div><div></div><div></div><div></div><div></div><div></div><div></div><div></div><div></div><div></div><div></div><div></div><div></div><div></div><div></div><div></div><div></div><div></div><div></div><div></div><div></div><div></div><div></div><div></div><div></div><div></div><div></div><div></div><div></div><div></div><div></div><div></div><div></div><div></div><div></div><div></div><div></div><div></div><div></div><div></div><div></div><div></div><div></div><div></div><div></div><div></div><div></div><div></div><div></div><div></div><div></div><div></div><div></div><div></div><div></div><div></div><div></div><div></div><div></div><div></div><div></div><div></div><div></div><div></div><div></div><div></div><div></div><div></div><div></div><div></div><div></div><div></div><div></div><div></div><div></div><div></div><div></div><div></div><div></div><div></div><div></div><div></div><div></div><div></div><div></div><div></div><div></div><div></div><div></div><div></div><div></div><div></div><div></div><div></div><div></div><div></div><div></div><div></div><div></div><div></div><div></div><div></div><div></div><div></div><div></div><div></div><div></div><div></div><div></div><div></div><div></div><div></div><div></div><div></div><div></div><div></div><div></div><div></div><div></div><div></div><div></div><div></div><div></div><div></div><div></div><div></div><div></div><div></div><div></div><div></div><div></div><div></div><div></div><div></div><div></div><div></div><div></div><div></div><div></div><div></div><div></div><div></div><div></div><div></div><div></div><div></div><div></div><div></div><div></div><div></div><div></div><div></div><div></div><div></div><div></div><div></div><div></div><div></div><div></div><div></div><div></div><div></div><div></div><div></div><div></div><div></div><div></div><div></div><div></div><div></div><div></div><div></div><div></div><div></div><div></div><div></div><div></div><div></div><div></div><div></div><div></div><div></div><div></div><div></div><div></div><div></div><div></div><div></div><div></div><div></div><div></div><div></div><div></div><div></div><div></div><div></div><div></div><div></div><div></div><div></div><div></div><div></div><div></div><div></div><div></div><div></div><div></div><div></div><div></div><div></div><div></div><div></div><div></div><div></div><div></div><div></div><div></div><div></div><div></div><div></div><div></div><div></div><div></div><div></div><div></div><div></div><div></div><div></div><div></div><div></div><div></div><div></div><div></div><div></div><div></div><div></div><div></div><div></div><div></div><div></div><div></div><div></div><div></div><div></div><div></div><div></div><div></div><div></div><div></div><div></div><div></div><div></div><div></div><div></div><div></div><div></div><div></div><div></div><div></div><div></div><div></div><div></div><div></div><div></div><div></div><div></div><div></div><div></div><div></div><div></div><div></div><div></div><div></div><div></div><div></div><div></div><div></div><div></div><div></div><div></div><div></div><div></div><div></div><div></div><div></div><div></div><div></div><div></div><div></div><div></div><div></div><div></div><div></div><div></div><div></div><div></div><div></div><div></div><div></div><div></div><div></div><div></div><div></div><div></div><div></div><div></div><div></div><div></div><div></div><div></div><div></div><div></div><div></div><div></div><div></div><div></div><div></div><div></div><div></div><div></div><div></div><div></div><div></div><div></div><div></div><div></div><div></div><div></div><div></div><div></div><div></div><div></div><div></div><div></div><div></div><div></div><div></div><div></div><div></div><div></div><div></div><div></div><div></div><div></div><div></div><div></div><div></div><div></div><div></div><div></div><div></div><div></div><div></div><div></div><div></div><div></div><div></div><div></div><div></div><div></div><div></div><div></div><div></div><div></div><div></div><div></div><div></div><div></div><div></div><div></div><div></div><div></div><div></div><div></div><div></div><div></div><div></div><div></div><div></div><div></div><div></div><div></div><div></div><div></div><div></div><div></div><div></div><div></div><div></div><div></div><div></div><div></div><div></div><div></div><div></div><div></div><div></div><div></div><div></div><div></div><div></div><div></div><div></div><div></div><div></div><div></div><div></div><div></div><div></div><div></div><div></div><div></div><div></div><div></div><div></div><div></div><div></div><div></div><div></div><div></div><div></div><div></div><div></div><div></div><div></div><div></div><div></div><div></div><div></div><div></div><div></div><div></div><div></div><div></div><div></div><div></div><div></div><div></div><div></div><div></div><div></div><div></div><div></div><div></div><div></div><div></div><div></div><div></div><div></div><div></div><div></div><div></div><div></div><div></div><div></div><div></div><div></div><div></div><div></div><div></div><div></div><div></div><div></div><div></div><div></div><div></div><div></div><div></div><div></div><div></div><div></div><div></div><div></div><div></div><div></div><div></div><div></div><div></div><div></div><div></div><div></div><div></div><div></div><div></div><div></div><div></div><div></div><div></div><div></div><div></div><div></div><div></div><div></div><div></div><div></div><div></div><div></div><div></div><div></div><div></div><div></div><div></div><div></div><div></div><div></div><div></div><div></div><div></div><div></div><div></div><div></div><</div>																					



Activity ID	Activity Name	2016					2017					2017									
		December					January					February					March				
		28	05	12	19	26	02	09	16	23	30	06	13	20	27	06	13	20	27		
	Degree 1, South - G/F																				
	Degree 2, South - G/F																				
	Degree 3, South - G/F																				
	First Floor, South - 1/F																				
	Degree 1, South - 1/F																				
	Degree 2, South - 1/F																				
	Degree 3, South - 1/F																				
	Second Floor, South - 2/F																				
	Degree 1, South - 2/F																				
	Degree 2, South - 2/F																				
	Degree 3, South - 2/F																				
	External Finishes South																				
	Roof Finishes - South																				
	Facade - South																				
	At Grade - South																				
	North Section																				
	North Section Internal																				
	Ground Floor, North - G/F																				
	Degree 1, North - G/F																				
	Degree 2, North - G/F																				
	Degree 3, North - G/F																				
	First Floor, North - 1/F																				
	Degree 1, North - 1/F																				
	Degree 2, North - 1/F																				
	Degree 3, North - 1/F																				
	North External Finishes																				
	North Green Roof																				
	North Facade																				
	North At Grade																				
	Specialist Installations																				
RAB-45-1120	045 - Install Fuel Tanks G/F North																				
	Window Wall																				
RAB-23-7120	045 - Install Window Wall Cast in Items G/F																				
RAB-23-7190	045 - Install Window Wall Cast in Items F/F																				
	East																				
	West																				
	Utilities and Drainage																				
	Testing & Commissioning																				
	Statutory Submissions & Approvals (Day 670 Completion)																				
	EMSD - Building 045 Lift Inspection																				
	Fuel Tank - DG License																				
RAB-FSD-640	045 - DG Storage Dwg ready for Submission																				
RAB-FSD-650	045 - Submission to FSD																				
RAB-FSD-660	045 - FSD Inspection & Approval																				
RAB-FSD-680	045 - FSD Issue License																				
	Generator Set - EPD Permit																				
	Generator Set - DG Licence																				
	Water Supplies Department (WSD)																				

■ Remaining Level of Effort

■ Actual Work

■ Actual Level of Effort

■ Remaining Work

◆

◆

C8 - 3 MONTH ROLLING PROGRAMME, 01 DEC-16 UPDATE

Page 11 of 18

Date	Revision	Checked	Appro...
01-Dec-16	Working Programme with RAB3 Baseline	SGJ	

Activity ID	Activity Name	2016					2017														
		December					January					February					March				
		28	05	12	19	26	02	09	16	23	30	06	13	20	27	06	13	20	27		
Commencement																					
RAB-WSD-644	045 - Submit WWO 46 Pt. I & II																				
RAB-WSD-634	045 - Submit WWO 46 Pt. III																				
Completion																					
Fire Services Department (FSD)																					
Commencement																					
RAB-FSD-620	045 - Submit WWO 46 Pt. I & II																				
RAB-WSD-974	045 - Submit WWO 46 Pt. III																				
Completion																					
Fire Servives Department (HVAC)																					
Engineer (AECOM)																					
Building 050 - Public Toilets Type 2																					
RAB-50-1000	050 H1 - Forecast Possession of Portion H1 - If Exercised																				
Public Toilet (Portion H1)																					
Excavation																					
RAB-50-1020	050 H1 - Open cut excavation down to formation level (370m³)																				
RAB-50-1030	050 H1 - Underground Utilities and Drainage																				
Raft																					
RAB-50-1040	050 H1 - Construct Raft Foundation (140m²) (91m³)																				
Structure																					
RAB-50-4310	050 H1 - Construct RC Support Columns for Aluminium Solar Shade																				
ABWF/E&M																					
Internal Finishes																					
Degree 1																					
Degree 2																					
Degree 3																					
Specialist installation																					
Roof Finishes																					
External Finishes																					
Utilities and Drainage																					
Testing & Commissioning																					
Statutory Submissions & Approvals (Day 670 Completion)																					
Water Supplies Department (WSD)																					
Commencement																					
RAB-WSD-614	050 H1 - Submit WWO 46 Pt. I & II for Building 050																				
RAB-WSD-624	050 H1 - Submit WWO 46 Pt. III																				
Completion																					
Fire Servives Department (VAC)																					
Engineer (AECOM)																					
Public Toilet (Portion H2)																					
RAB-50-2000	050 H2 - Possession of Portion H2 - If Exercised																				
Excavation																					
RAB-50-2020	050 H2 - Open cut excavation down to formation level (370m³)																				
RAB-50-2030	050 H2 - Underground Utilities and Drainage																				
Raft																					
Structure																					

Activity ID	Activity Name	2016					2017																														
		December					January					February					March																				
		28	05	12	19	26	02	09	16	23	30	06	13	20	27	06	13	20	27																		
	ABWF/E&M																																				
	Internal Finishes																																				
	Degree 1																																				
	Degree 2																																				
	Degree 3																																				
	Specialist installation																																				
	Roof Finishes																																				
	External Finishes																																				
	Utilities and Drainage																																				
	Testing & Commissioning																																				
	Statutory Submissions & Approvals (Day 670 Completion)																																				
	Water Supplies Department (WSD)																																				
	Commencement																																				
	RAB-WSD-574	050 H2 - Submit WWO 46 Pt. I & II																																			
	RAB-WSD-584	050 H2 - Submit WWO 46 Pt. III																																			
	Completion																																				
	Fire Serves Department (VAC)																																				
	Engineer (AECOM)																																				
	Public Toilet (Portion A1)																																				
	Excavation																																				
	Raft																																				
	Structure																																				
	ABWF/E&M																																				
	Internal Finishes																																				
	Degree 1																																				
	Degree 2																																				
	Degree 3																																				
Specialist installation																																					
Roof Finishes																																					
External Finishes																																					
Utilities and Drainage																																					
Testing & Commissioning																																					
Statutory Submissions & Approvals (Day 670 Completion)																																					
Water Supplies Department (WSD)																																					
Commencement																																					
Completion																																					
Fire Serves Department (VAC)																																					
Engineer (Aecom)																																					
Public Toilet (Portion A2)																																					
Excavation																																					
RAB-50-4020	050 A2 - Open cut excavation down to formation level (370m³)																																				
RAB-50-4030	050 A2 - Underground Utilities and Drainage																																				
Raft																																					
RAB-50-4040	050 A2 - Construct Raft Foundation (140m²) (91m³)																																				
Structure																																					

Activity ID		Activity Name	2016					2017				2017				2017				
			December					January				February				March				
			28	05	12	19	26	02	09	16	23	30	06	13	20	27	06	13	20	27
RAB-50-4350		050 A2 - Construct RC Support Columns for Aluminium Solar Shade										<div></div>								
ABWF/E&M																				
Internal Finishes																				
Degree 1																				
Degree 2																				
Degree 3																				
Specialist installation																				
Roof Finishes																				
External Finishes																				
Utilities and Drainage																				
Testing & Commissioning																				
Statutory Submissions & Approvals (Day 670 Completion)																				
Water Supplies Department (WSD)																				
Commencement																				
Completion																				
VAC (FSD)																				
Engineer (AECOM)																				
Building 053 - Outbound X-Ray Building																				
Excavation																				
RAB-53-0170	053 - SUMMARY OF BUILDING STRUCTURE	<div></div>																		
Raft																				
Structure																				
External Walls																				
To First Floor Level																				
RAB-53-0190	053 - Construct External Walls and Columns to +13.0mPD North - G/F - 1/F																			
RAB-53-0250	053 - Construct External Walls and Columns to +13.0mPD South - G/F - 1/F																			
Internal Structures																				
RAB-53-7550	053 - Construct Internal Liftshaft L-01 +13.0mPD North - G/F - 1/F																			
RAB-53-7490	053 - Construct Internal Staircase S-01 +13.0mPD South - G/F - 1/F																			
RAB-53-7500	053 - Construct Internal Staircase S-02 +13.0mPD North - G/F - 1/F																			
First Floor																				
Slabs																				
RAB-53-0240	053 - Construct 1/F Suspended Slab +13.0mPD North - 1/F																			
RAB-53-0310	053 - Construct 1/F Suspended Slab +13.0mPD South - 1/F																			
Cure and Strip																				
RAB-53-0260	053 - Cure and Strip False/Formwork at +13.0mPD North - G/F-1/F	<div></div>																		
RAB-53-0340	053 - Cure and Strip False/Formwork at +13.0mPD South - G/F-1/F	<div></div>					<div></div>													
1/F - Roof Level																				
RAB-53-0280	053 - Construct External Walls and Columns to +17.4mPD North, 1/F - R/F																			
RAB-53-0360	053 - Construct External Walls and Columns to +17.4mPD South, 1/F - R/F																			
Staircases																				
RAB-53-7560	053 - Construct Internal Liftshaft L-01 +17.4mPD North, 1/F - R/F	<div></div>																		
RAB-53-7520	053 - Construct Internal Staircase S-02 +17.4mPD North, 1/F - R/F	<div></div>																		
RAB-53-7510	053 - Construct Internal Staircase S-01 +17.4mPD South, 1/F - R/F	<div></div>																		
Roof Floor																				
Slabs																				
RAB-53-0320	053 - Construct R/F Suspended Slab at +17.4mPD North, R/F	<div></div>																		

■ Remaining Level of Effort

■ Actual Work

■ Actual Level of Effort

■ Remaining Work ◆ ◆

C8 - 3 MONTH ROLLING PROGRAMME, 01 DEC-16 UPDATE

Page 14 of 18

Date

Revision

Checked

Appro...

01-Dec-16

Working Programme with RAB3 Baseline

SGJ

Activity ID	Activity Name	2016					2017														
		December					January					February					March				
		28	05	12	19	26	02	09	16	23	30	06	13	20	27	06	13	20	27		
RAB-53-0430	053 - Construct R/F Suspended Slab at +17.4mPD South, R/F																				
Cure and Strip																					
RAB-53-0350	053 - Cure and Strip False/Formwork at +17.4mPD North, 1/F - R/F																				
RAB-53-0480	053 - Cure and Strip False/Formwork at +17.1mPD South, 1/F - R/F																				
ABWF/E&M																					
Ground Floor																					
Degree 1 - G/F																					
RAB-53-0390	053 - Blockwork / Partition Walls																				
RAB-53-0630	53 - Screeding																				
RAB-53-0590	053 - Plastering & Undercoat																				
RAB-53-0400	053 - MEP 1st Fix - North G/F																				
RAB-53-0510	053 - Projected Achievement of Stage 1A																				
Degree 2 - G/F																					
RAB-53-7895	053 - Framework for Wall Panel & Cladding																				
Degree 3 - G/F																					
First Floor																					
Degree 1 - 1/F																					
RAB-53-7945	053 - Blockwork / Partition Walls																				
RAB-53-8025	53 - Screeding																				
RAB-53-7965	053 - Plastering & Undercoat																				
RAB-53-7955	053 - MEP 1st Fix - North G/F																				
RAB-53-7975	053 - Projected Achievement of Stage 1A																				
Degree 2 - 1/F																					
Degree 3 - 1/F																					
External Finishes																					
External Facade																					
RAB-53-0410	053 - Erect External Scaffolding																				
RAB-53-0440	053 - Install External Louvers /Windows/Doors																				
RAB-53-0450	053 - External Render (465m²) (From Bldg 053)																				
At Grade																					
Roof Finishes																					
RAB-53-0420	053 - Leveling Screed - (490m²)																				
RAB-53-0460	053 - Waterproof Membrane - (490m²)																				
RAB-53-670	053 - Insulation Board - (490m²)																				
RAB-53-0490	053 - Top Screed - (490m²)																				
Spacialist Installations																					
Glazed Canopy																					
Utilities and Drainage																					
RAB-53-7620	053 - Install Fresh Water Mains																				
Testing & Commissioning																					
RAB-TC53-1040	053 - T&C (HVAC, FS, P&D, OTHERS)																				
Statutory Submissions & Approvals (Day 470 Completion)																					
EMSD - Building 053 Lift Inspection																					
RAB-FSD-140	053 - Submit EMSD Form 3 (Commencement of Lift Installation)																				
Water Supplies Department (WSD)																					
Commencement																					
RAB-WSD-494	053 - Submit WWO 46 Pt. I & II																				
RAB-WSD-504	053 - Submit WWO 46 Pt. III																				

- Remaining Level of Effort
- Actual Level of Effort
- Actual Work
- Remaining Work
- ◆

 ◆

Date	Revision	Checked	Appro...
01-Dec-16	Working Programme with RAB3 Baseline	SGJ	

Activity ID	Activity Name	2016					2017														
		December					January					February					March				
		28	05	12	19	26	02	09	16	23	30	06	13	20	27	06	13	20	27		
Completion																					
Fire Water Services (FSD)																					
Commencement																					
RAB-FSD-770	053 - Submit WWO 46 Pt. I & II																				
RAB-FSD-840	053 - Submit WWO 46 Pt. III																				
Completion																					
Fire Servives Department (VAC)																					
Engineer (AECOM)																					
Building 058 - Outbound X-Ray Scan Tunnel																					
Excavation																					
Raft																					
RAB-58-0160	058 - Construct Raft Foundation - West																				
RAB-58-0180	058 - SUMMARY OF BUILDING STRUCTURE																				
RAB-58-0170	058 - Construct Raft Foundation - East																				
Structure																					
Walls																					
South																					
RAB-58-0210	058 - Construct West Walls to +9.5mPD																				
RAB-58-0230	058 - Construct West Walls to +12.6mPD																				
RAB-58-0240	058 - Construct West Walls to +17.375mPD																				
North																					
RAB-58-0300	058 - Construct East Walls to +9.5mPD																				
RAB-58-0310	058 - Construct East Walls to +12.6mPD																				
RAB-58-0330	058 - Construct East Walls to +17.375mPD																				
Roof Slabs																					
RAB-58-0270	058 - Construct Roof floor to +17.375mPD Pour 1 - South																				
RAB-58-0430	058 - Construct Roof floor to +17.375mPD Pour 4 - North																				
Cure and Strip																					
RAB-58-0340	058 - Cure and Strip Roof floor to +17.375mPD - West																				
RAB-58-0460	058 - Cure and Strip Roof floor to +17.375mPD - East																				
ABWF/E&M																					
Internal Finishes																					
Degree 1																					
RAB-58-0550	058 - Roof Undercoat + Final Coat																				
RAB-58-0520	058 - MEP 1st Fix, Roof																				
Degree 2																					
RAB-58-0680	058 - Install Louver & Door Frame (Door Frame by other)																				
Degree 3																					
Roof Finishes																					
RAB-58-0410	058 - Leveling screed - 885m²																				
RAB-58-0450	058 - Waterproof membrane - 885m²																				
RAB-58-660	058 - insulation Board - 885m²																				
External Finishes																					
Facade																					
RAB-58-0390	058 - Erect External Scaffolding																				
RAB-58-0400	058 - Install External Louvers /Windows/Doors																				
RAB-58-0420	058 - External Render (630m²) (From Bldg 059)																				
RAB-58-0440	058 - External Tiling (630m²)																				
<div><div>■</div> Remaining Level of Effort</div> <div><div>■</div> Actual Work</div> <div><div>■</div></div>		C8 - 3 MONTH ROLLING PROGRAMME, 01 DEC-16 UPDATE										Page 16 of 18		Date	Revision		Checked	Appro...			
<div><div>■</div> Actual Level of Effort</div> <div><div>■</div> Remaining Work</div> <div><div>◆</div>◆</div>														01-Dec-16	Working Programme with RAB3 Baseline		SGJ				

Activity ID	Activity Name	2016					2017														
		December					January					February					March				
		28	05	12	19	26	02	09	16	23	30	06	13	20	27	06	13	20	27		
	At Grade																				
	Glazed Canopy																				
	Utilities and Drainage																				
RAB-58-7550	058 - Construct Permanent Drainage and Manholes (Approx 100m)																				
RAB-58-7580	058 - Install Fresh Water Mains																				
RAB-58-7570	058 - Install Flushing Water Mains																				
RAB-58-7560	058 - Utilites and Common Telecom Ducting																				
	Testing & Commissioning																				
	Statutory Submissions & Approvals (Day 470 Completion)																				
	Fire Services Department (FSD)																				
	Engineer (AECOM)																				
	Building 059 - Inbound X-Ray Scan Tunnel																				
	Excavation																				
RAB-59-0130	059 - SUMMARY OF BUILDING STRUCTURE																				
	Raft Foundations																				
	Structure																				
	Walls																				
	West																				
RAB-59-0240	059 - Construct West Walls to +17.375mPD																				
	East																				
RAB-59-0330	059 - Construct East Walls to +17.375mPD																				
	Roof Slabs																				
RAB-59-0270	059 - Construct Roof floor up to +17.375mPD Pour 1 (227m²) (34m³)																				
RAB-59-0320	059 - Construct Roof floor up to +17.375mPD Pour 2 (214m²) (32m³)																				
RAB-59-0360	059 - Construct Roof floor up to +17.375mPD Pour 3 (214m²) (32m³)																				
RAB-59-0410	059 - Construct Roof floor up to +17.375mPD Pour 4 (227m²) (34m³)																				
	Cure and Strip																				
RAB-59-0290	059 - Cure and Strip Roof floor up to +17.375mPD Pour 1																				
RAB-59-0340	059 - Cure and Strip Roof floor up to +17.375mPD Pour 2																				
RAB-59-0380	059 - Cure and Strip Roof floor up to +17.375mPD Pour 3																				
RAB-59-0420	059 - Cure and Strip Roof floor up to +17.375mPD Pour 4																				
	ABWF/E&M																				
	Internal Finishes																				
	Degree 1																				
RAB-59-0580	059 - Roof Undercoat + Final Coat																				
RAB-59-0600	059 - MEP 1st Fix, Roof																				
RAB-59-0570	059 - Wall Plastering & Undercoat																				
	Degree 2																				
	Degree 3																				
	External Finishes																				
	Facade																				
RAB-59-0390	059 - Erect External Scaffolding																				
RAB-59-0450	059 - External Tiling (630m²)																				
RAB-59-0430	059 - External Render (630m²)																				
	At Grade																				
	Roof Finishes																				
RAB-59-0460	059 - Leveling screed - 885m²																				
<div><div>■</div> Remaining Level of Effort</div> <div><div>■</div> Actual Work</div> <div><div>■</div></div>		C8 - 3 MONTH ROLLING PROGRAMME, 01 DEC-16 UPDATE										Page 17 of 18		Date	Revision		Checked	Appro...			
<div><div>■</div> Actual Level of Effort</div> <div><div>■</div> Remaining Work</div> <div><div>◆</div></div> <div><div>◆</div></div>														01-Dec-16	Working Programme with RAB3 Baseline		SGJ				

Activity ID	Activity Name	2016					2017															
		December					January					February					March					
		28	05	12	19	26	02	09	16	23	30	06	13	20	27	06	13	20	27			
	RAB-59-0490	059 - Waterproof Membrane - 885m²										[Red Bar]										
	RAB-59-670	059 - Insulation Board - 885m²										[Red Bar]										
	Glazed Canopy																					
	Utilities and Drainage																					
	Testing & Commissioning																					
	Statutory Submissions & Approvals (Day 470 Completion)																					
	Fire Services Department (FSD)																					
	Engineer (AECOM)																					